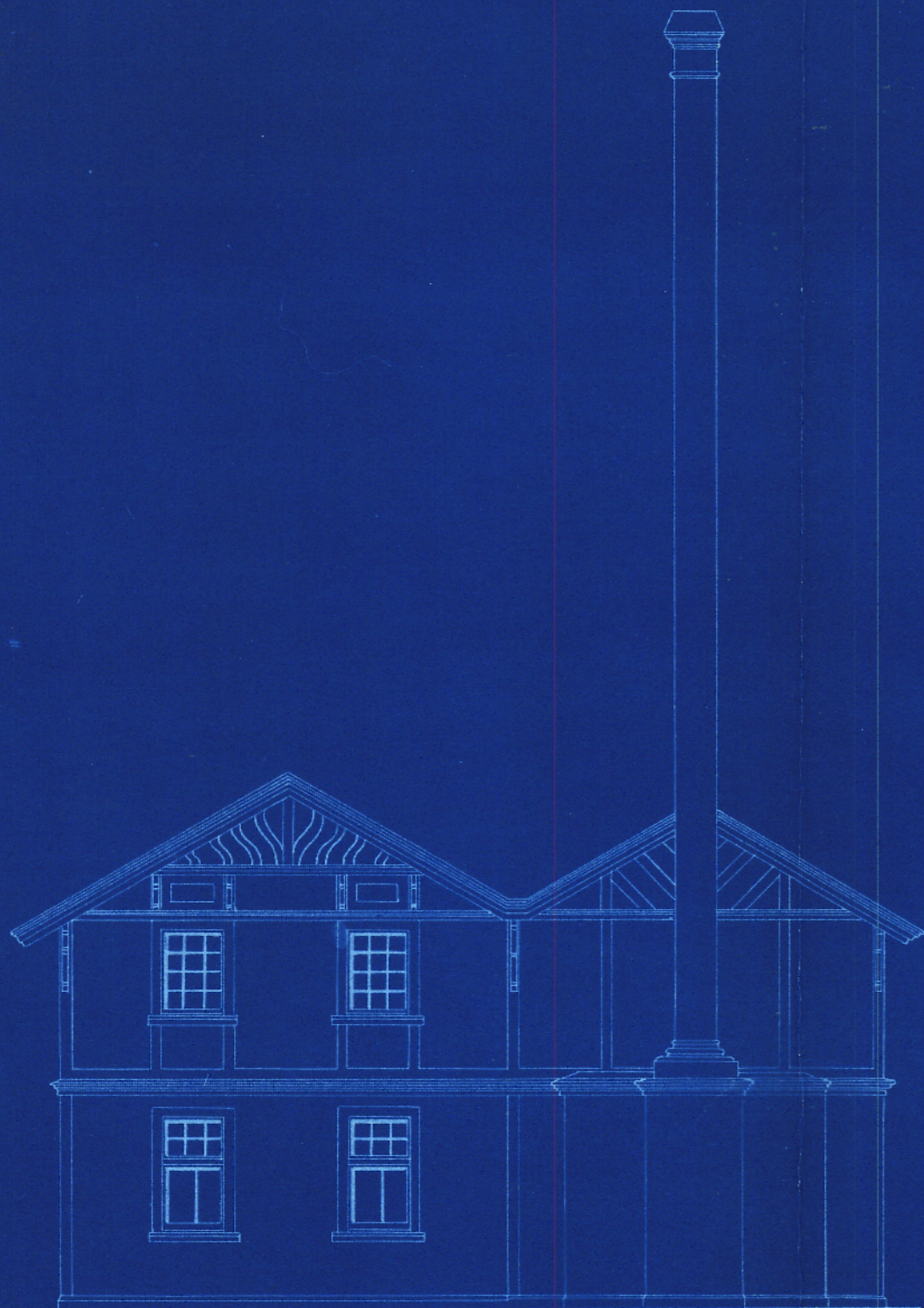


KELBURNE · KARORI · TRAMWAY

1/2 Inch Detail of Gable

POWER STATION
— Botanical Gardens —
Wellington

Scale: 1/8 Inch to a foot.



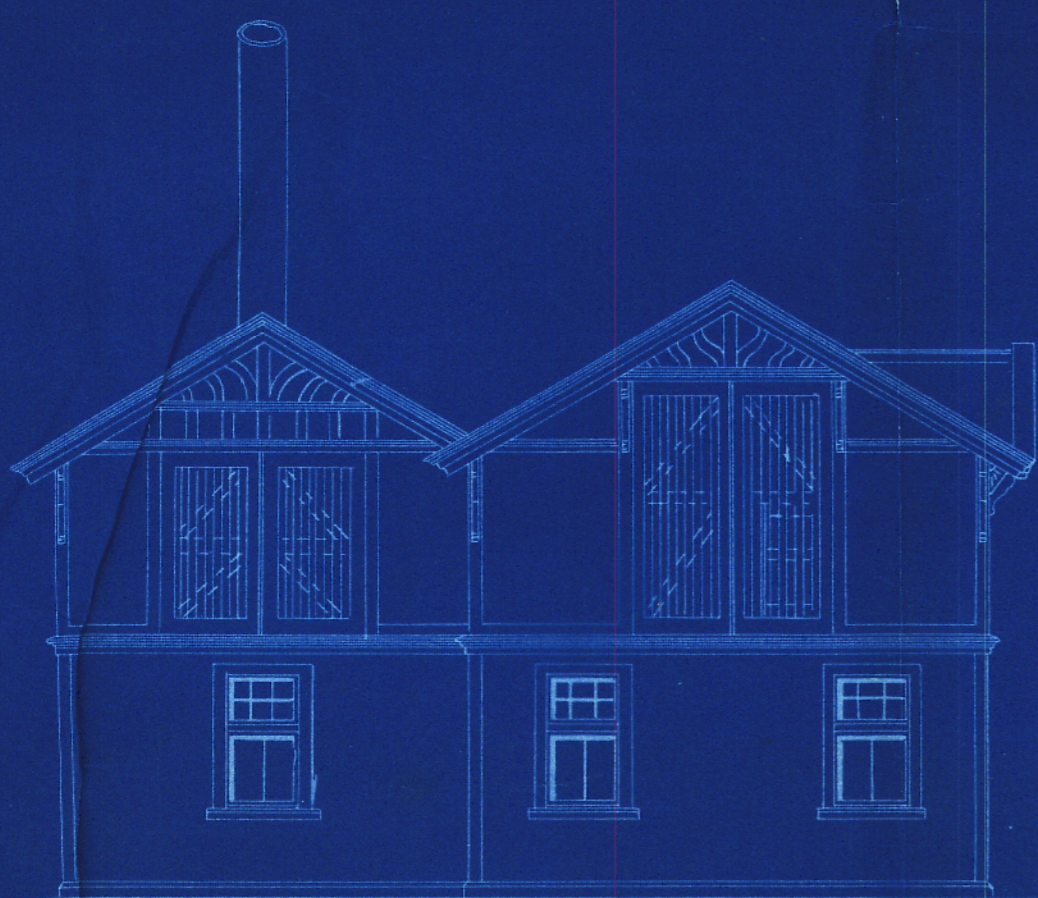
Elevation



Half Elevation

Section

Elevation



Elevation



Elevation

Kelburne - Karori Tramway

- Proposed power station in Botanical Gardens -

Scale, 30 feet = 1 Inch.

-- Area of Land ^{now} required = 0. Ac. 3. ro. 5 1/2 perches

- Previous area = 0. ac. 2 ro. 31.6 perches -

James E. Fulton
Engineer, March 6th 1901.

