

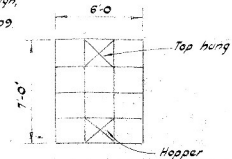
SECOND FLOOR PLAN

Scale: 1/4" = 1'-0"

Vertical ladder fire-escapes to all floors & ground drop section @ bottom.

Access to adjacent roof @ this floor level only.

2 New windows 6'-0" x 7'-0" high, head @ soffit of beam, all to N.Z.S.S. 1188/201/209 for fire windows



KEY

- Existing
- To be demolished
- New partitions types C & F only

NEW PARTITION TYPES

- C Solid partition to ceiling
- E Solid partition to 3'-0" glazed 3'-0" to 7'-0" solid to ceiling
- F " " " " " to ceiling

NOTES

1. All new partition framing 4x2" timber with fibrous plaster both sides.
2. New glazed partition shown
3. Where shown, replace existing glazing with 1/4" wired clear plate glass in new frame to detail - all to conform to N.Z.S.S. 1188/201/209.
4. Four doors 3'-0" glazed clear to conform to N.Z.S.S. 1188/101/103 for type A fire-doors.
5. All other doors 2'-8" x 6'-6" flush type part glazed.
6. Dimensions are to 4" stud without lining.

AMENDMENTS

Nº	Details	Date	By
D		April 62	CMW

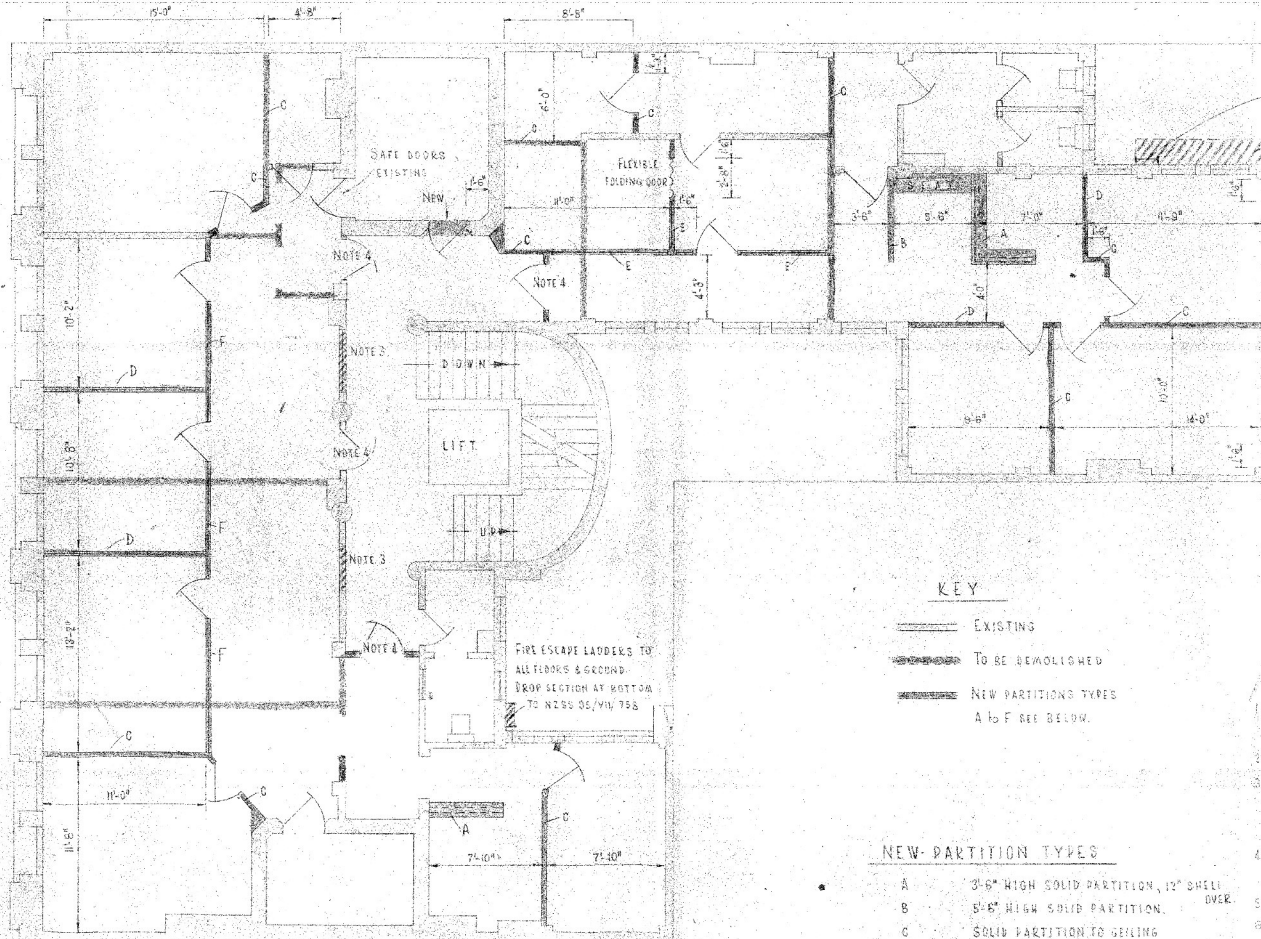
AMENDED PLAN
APPROVED BY: [Signature]

IAN MACALLAN & CO. CONSULTING ENGINEERS
WELLINGTON, N.Z.

CHAPMAN TRIPP & CO.
BRANDON ST. WELLINGTON
ALTERATIONS TO PREMISES 2ND FLOOR

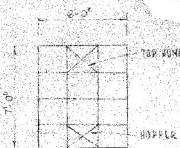
DESIGN	SCALE	LIVE LOAD	SHEET	OF	SHEETS
APPROVED	1/4" = 1'-0"				
DESIGNED					
CHECKED					

CMW
1314/11



VERTICAL LADDER FIRE ESCAPE
TO ALL FLOORS THROUGH DROP SECTION AT BOTTOM.
ACCESS TO ADJACENT LOBBY
AT SECOND FLOOR LEVEL
ALL TO BE SS OR W/SS

NEW WINDOW 8'-0" x 7'-0" HIGH
SLAB TO TOP OF BEAM
ALL TO BE SS OR W/SS
SEE FLOOR PLAN



KEY

- EXISTING
- TO BE DEMOLISHED
- ==== NEW PARTITION TYPES
A TO F SEE BELOW.

NEW PARTITION TYPES

- A 3'-6" HIGH SOLID PARTITION, 12" SHELL OVER.
- B 5'-6" HIGH SOLID PARTITION.
- C SOLID PARTITION TO CEILING
- D SOLID PARTITION TO 7'-0" GLAZED TO CEILING
- E SOLID PARTITION TO 5'-0" GLAZED 3'-0" x 7'-0"
- F SOLID PARTITION TO 3'-0" GLAZED TO CEILING

NOTES

- 1 ALL NEW PARTITION FRAMING IN 4x2" TIMBER
- 2 ALL NEW PARTITIONS TO BE WATER REPAIRED BOTH SIDES.
- 3 NEW PARTITIONS TO BE SHOWN
- 4 EXISTING GLAZING TO BE REPAIRED OR REPLACED WITH 1/2" W/SS
- 5 ALL NEW GLAZING IN NEW FRAME TO BE DETAIL - ALL TO BE W/SS UNLESS NOTED OTHERWISE
- 6 ALL NEW GLAZING TO BE GLAZED CLEAR, TO CONFORM TO
- 7 ALL NEW GLAZING TO BE TYPE A FIRE-DOORS.
- 8 ALL NEW GLAZING TO BE 2'-0" x 7'-0" FLUSH TYPE PAKT. GLAZED.
- 9 ALL NEW GLAZING TO BE 4" STUD WITHOUT LINING.

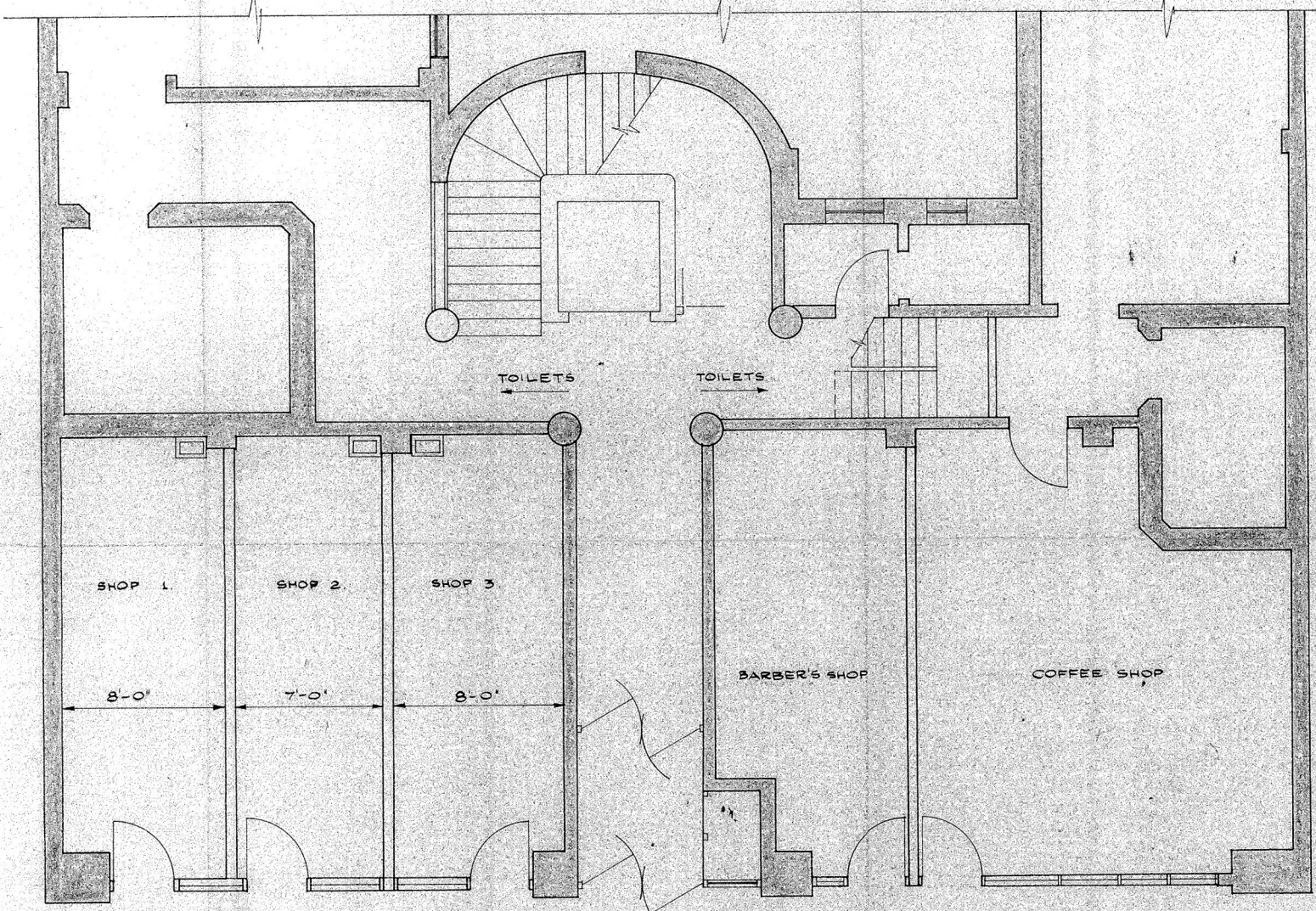
THIRD FLOOR PLAN

SCALE 1/4" = 1'-0"

REVISED	AMENDMENT	8	17 AUG 1969
DESIGN	LIVE LOAD		
IAN MACALLAN ARCHT. AMNZ CONSULTING ENGINEER CIVIL - BUILDING MARINE BUILDING - WELLINGTON, C.I. NZ			
CHAPMAN TRIPP & CO BRANDON ST WELLINGTON			
ALTERATIONS TO PREMISES - THIRD FLOOR			
SCALE	1/4" = 1'-0"	SHEET 2	OF SHEET
APPROVED	DESIGN	C.M.W.	PLAN NUMBER
Aug 1969	TRACED		
	CHECKED		1314/25

AMENDED PLAN
 APPROVED BY *JH* DATE
 7-8-65

CITY ENGINEER'S DEPARTMENT
 BUILDING BRANCH
 RECEIVED
 7 MAY 1965
 MERCER STREET, WELLINGTON



GROUND FLOOR PLAN

NO 20 BRANDON STREET.

NOTES.
 SHOPS SEPARATED BY 1/2 HOUR F.R.W. WALLS.
 SHOPS LOCK UP ACCESS TO TOILETS IN OFFICE HOURS.

IAN MACALL V.P. ARCHT. CONSULTING
 100 RANGITIKEI STREET, WELLINGTON
 TOHUNGA PROPERTIES LTD (CHAPMAN & TRIPP CO.) - AMENDMENTS TO GROUND FLOOR.
 (SEE PREVIOUS DRAWING NR 1314/30)

SCALE: 1/4" TO 1'-0"

E. R. I.
 J. H. 1314/8.

MAY 65