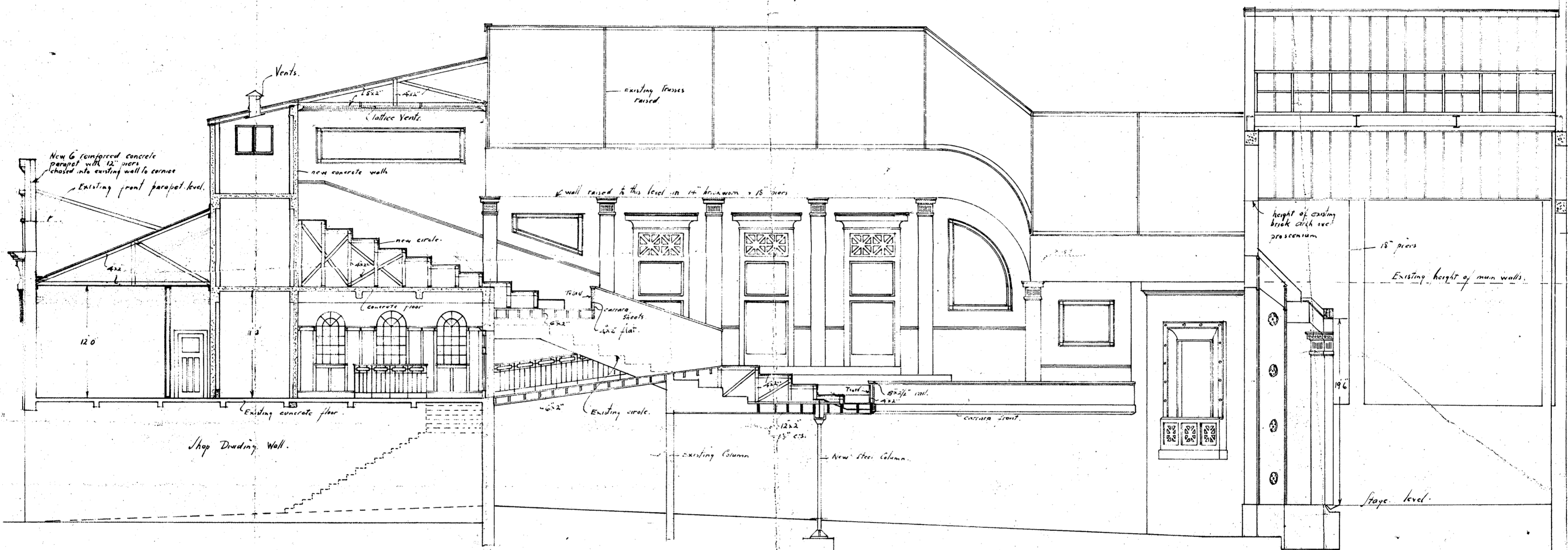


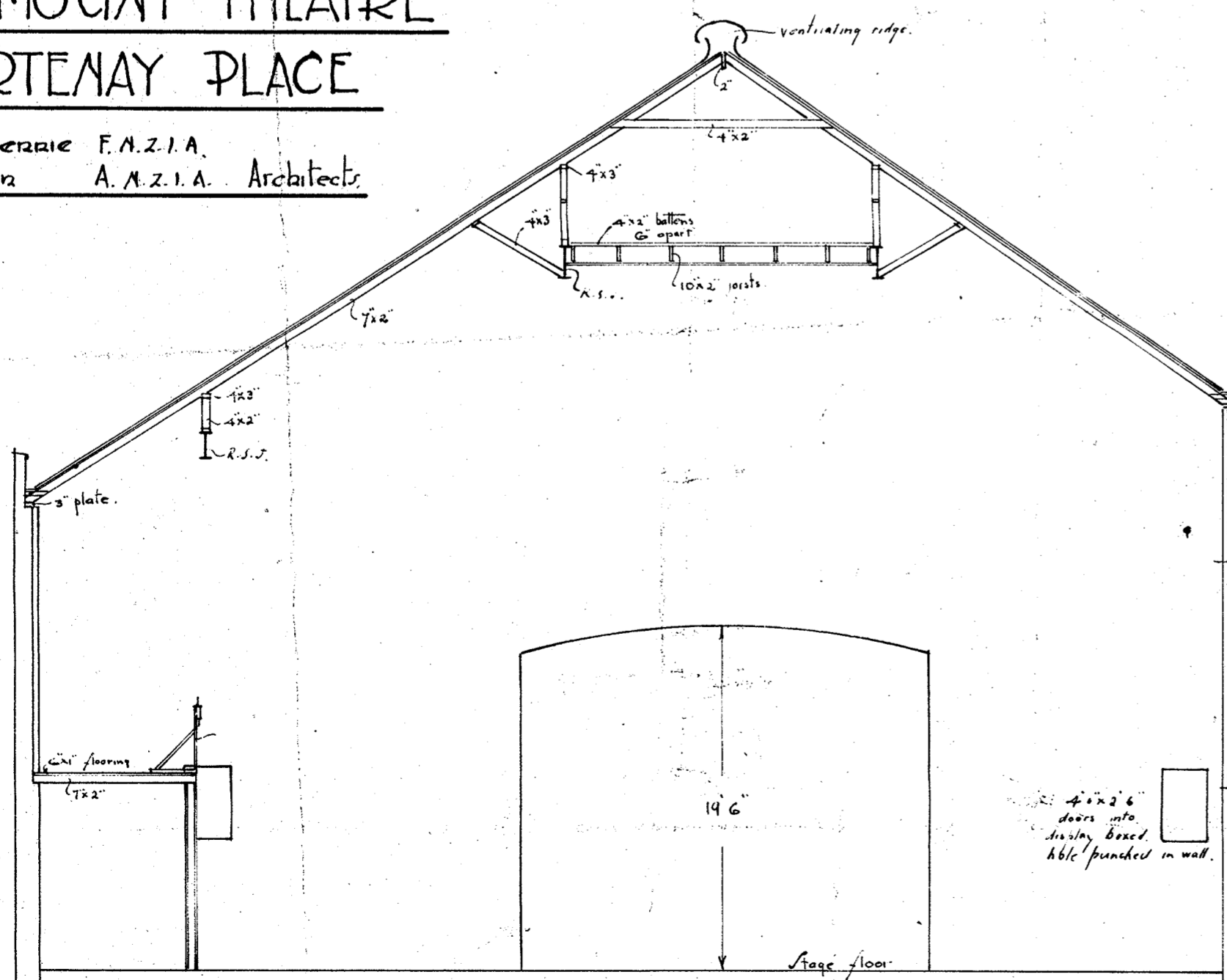
CIRCLE PLAN



LONGITUDINAL SECTION

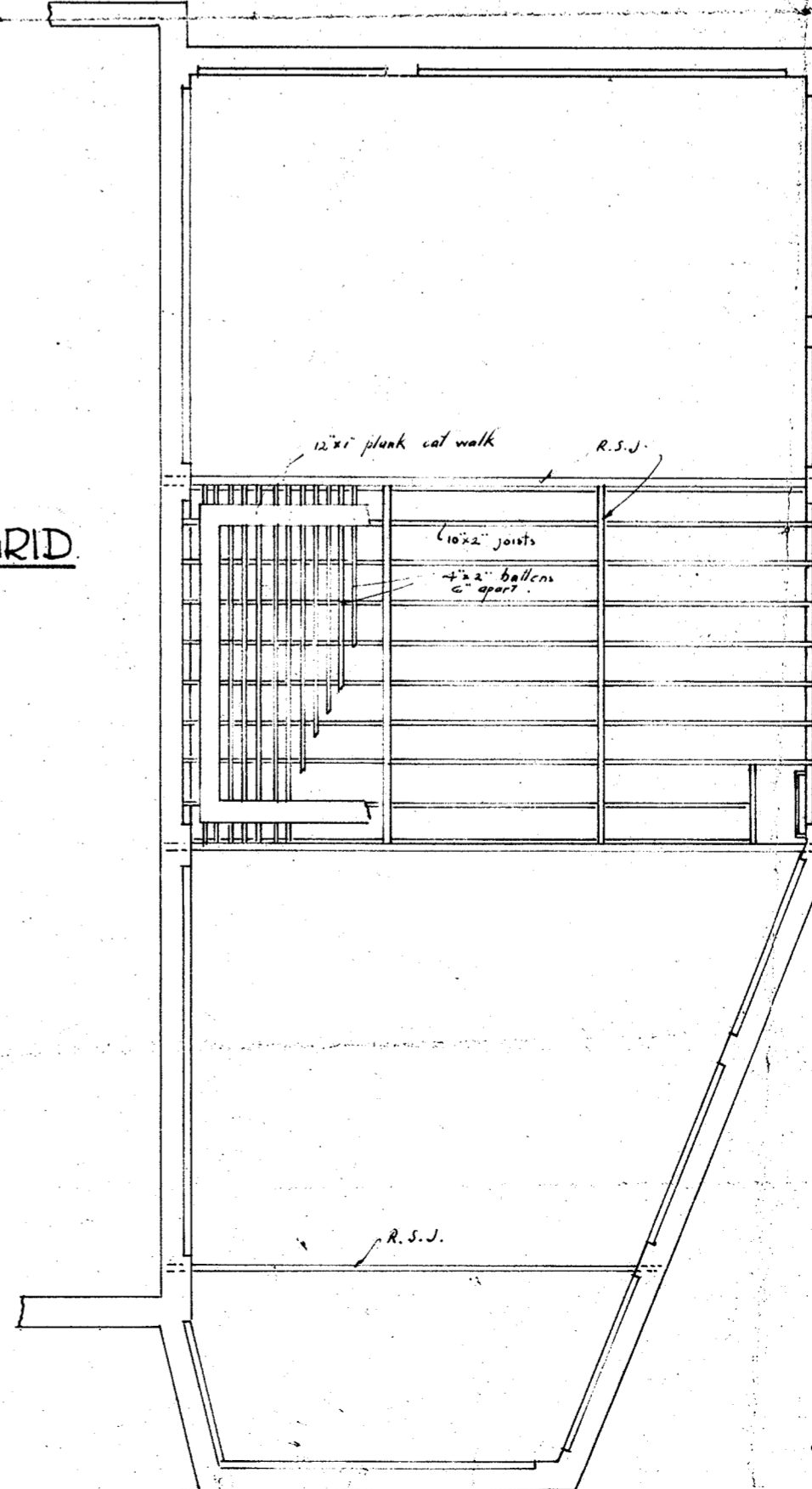
PROPOSED ALTERATIONS  
PARAMOUNT THEATRE  
COURTENAY PLACE

James Berrie F.A.Z.I.A.  
C.A. Martin A.A.Z.I.A. Architects



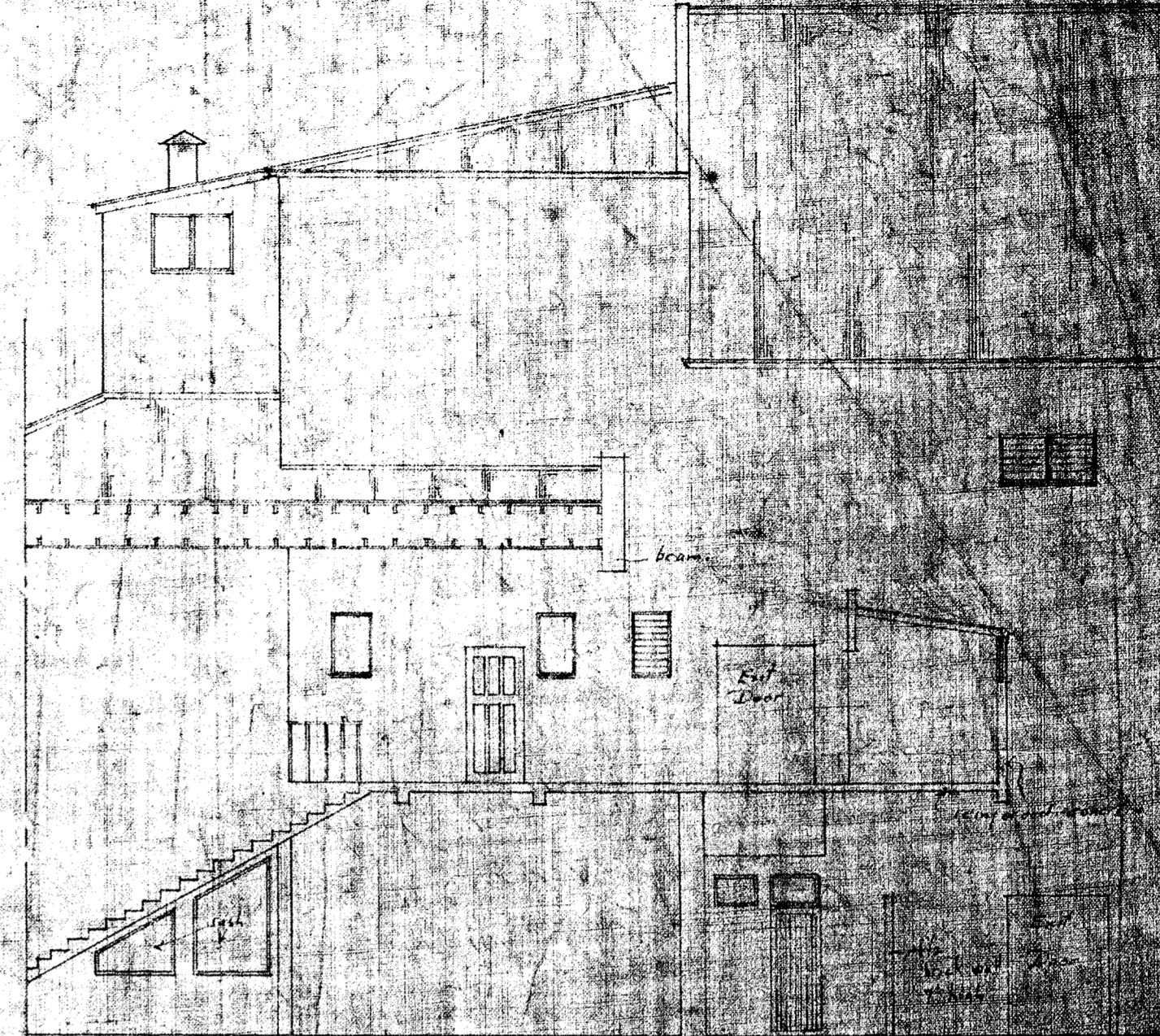
SECTION THRU STAGE & GRID

PLAN OF GRID

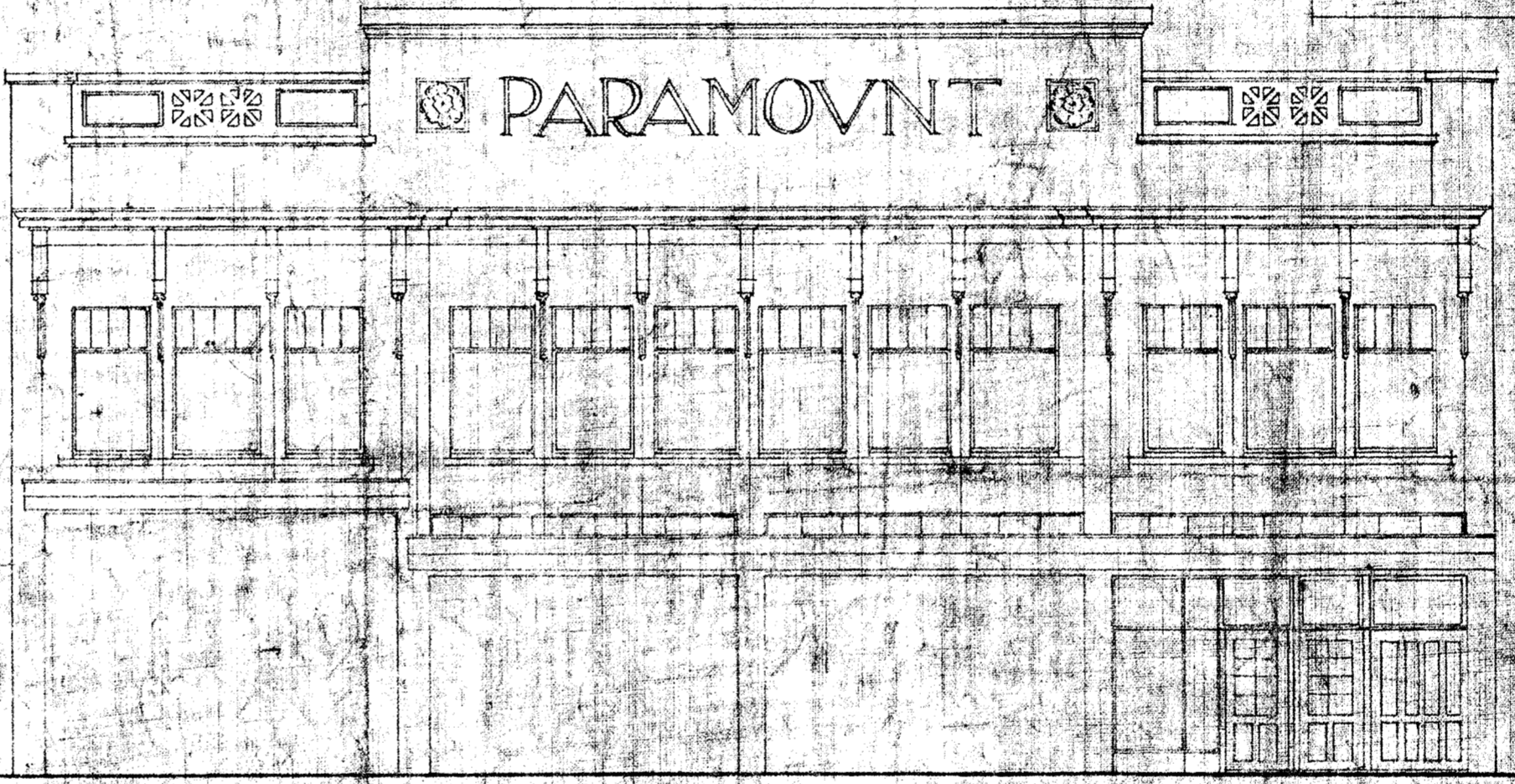


PROPOSED ALTERATIONS  
PARAMOUNT THEATRE  
COURTENAY PLACE

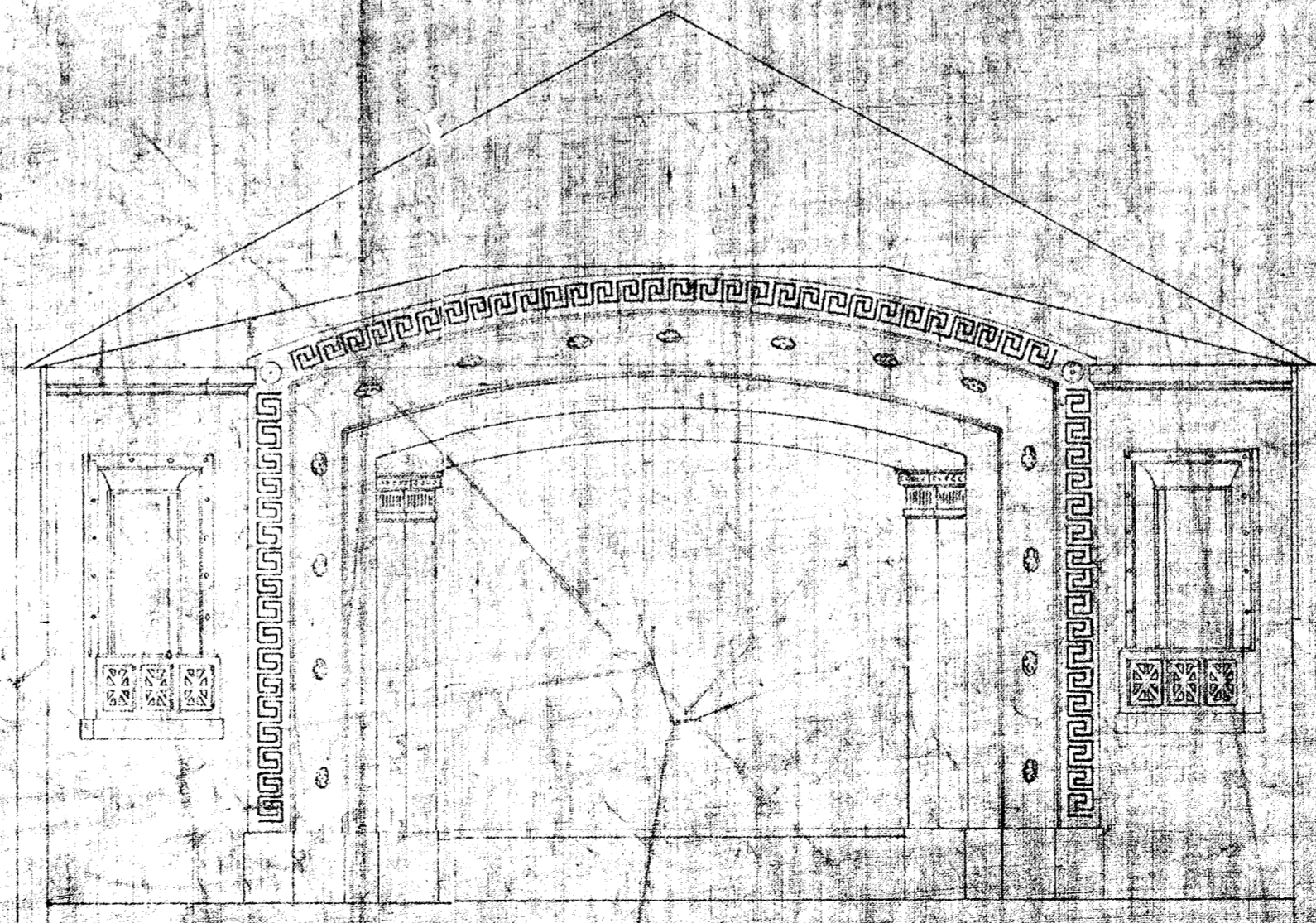
James Beattie, F.N.Z.I.A.  
C.A. Martin, A.N.Z.I.A. Architects



SECTION A-A



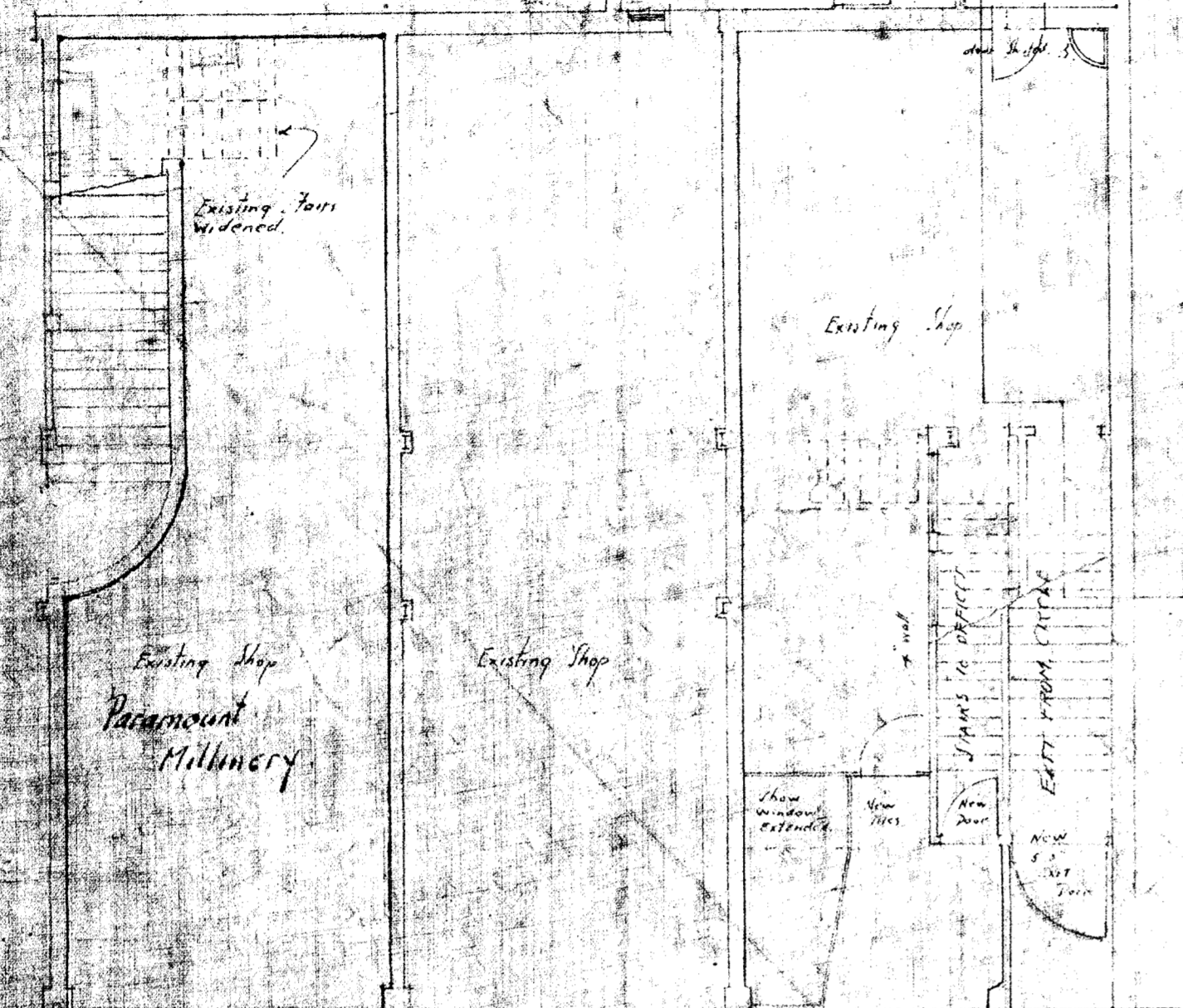
ALTERATIONS TO FRONT



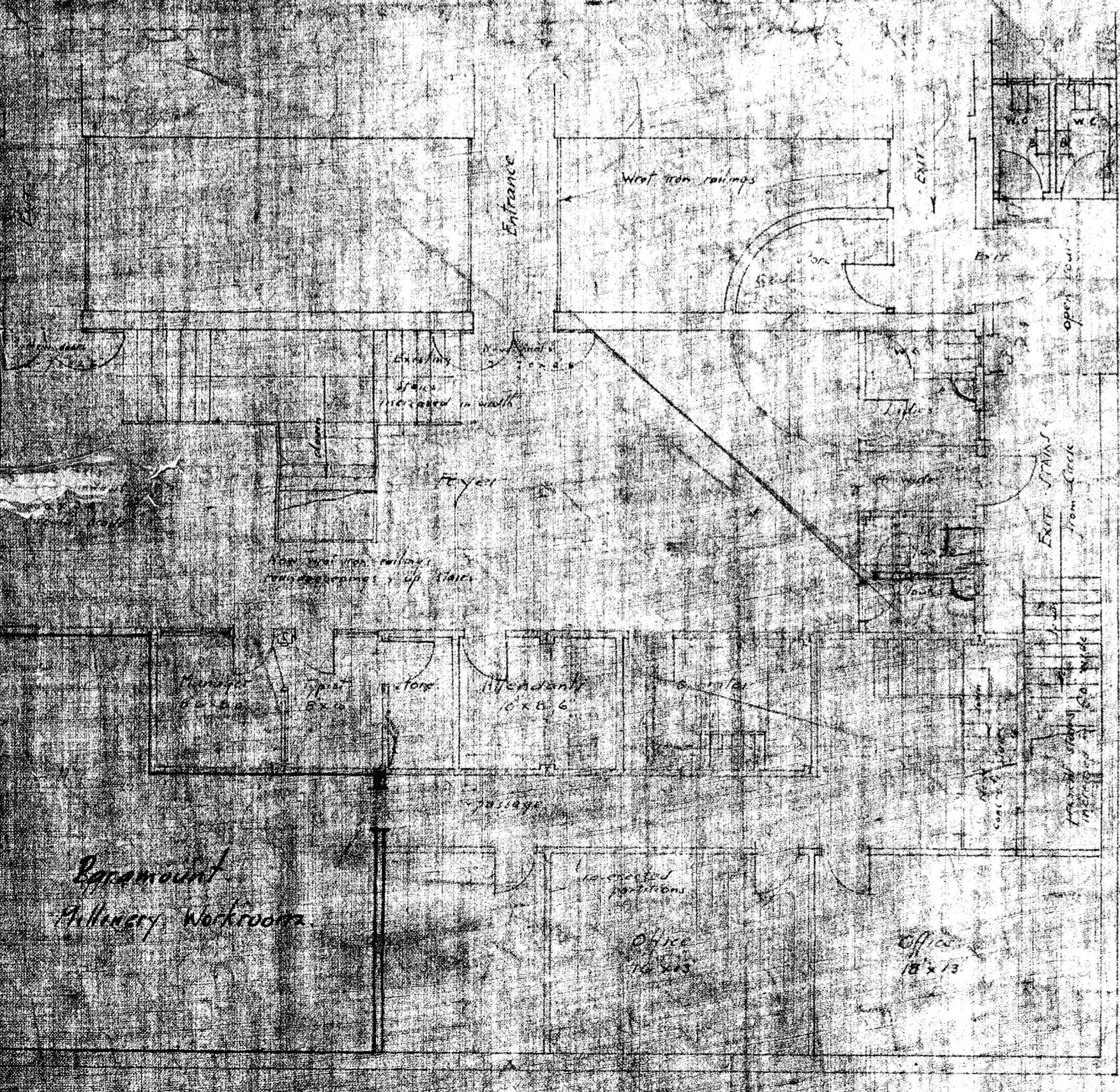
PROSCENIUM FRONT

*These are the plans referred to in contract signed December 31st 1926*  
*W. J. Beattie*  
*Builder: J. J. Gibson, 100/101 Courtenay Place*

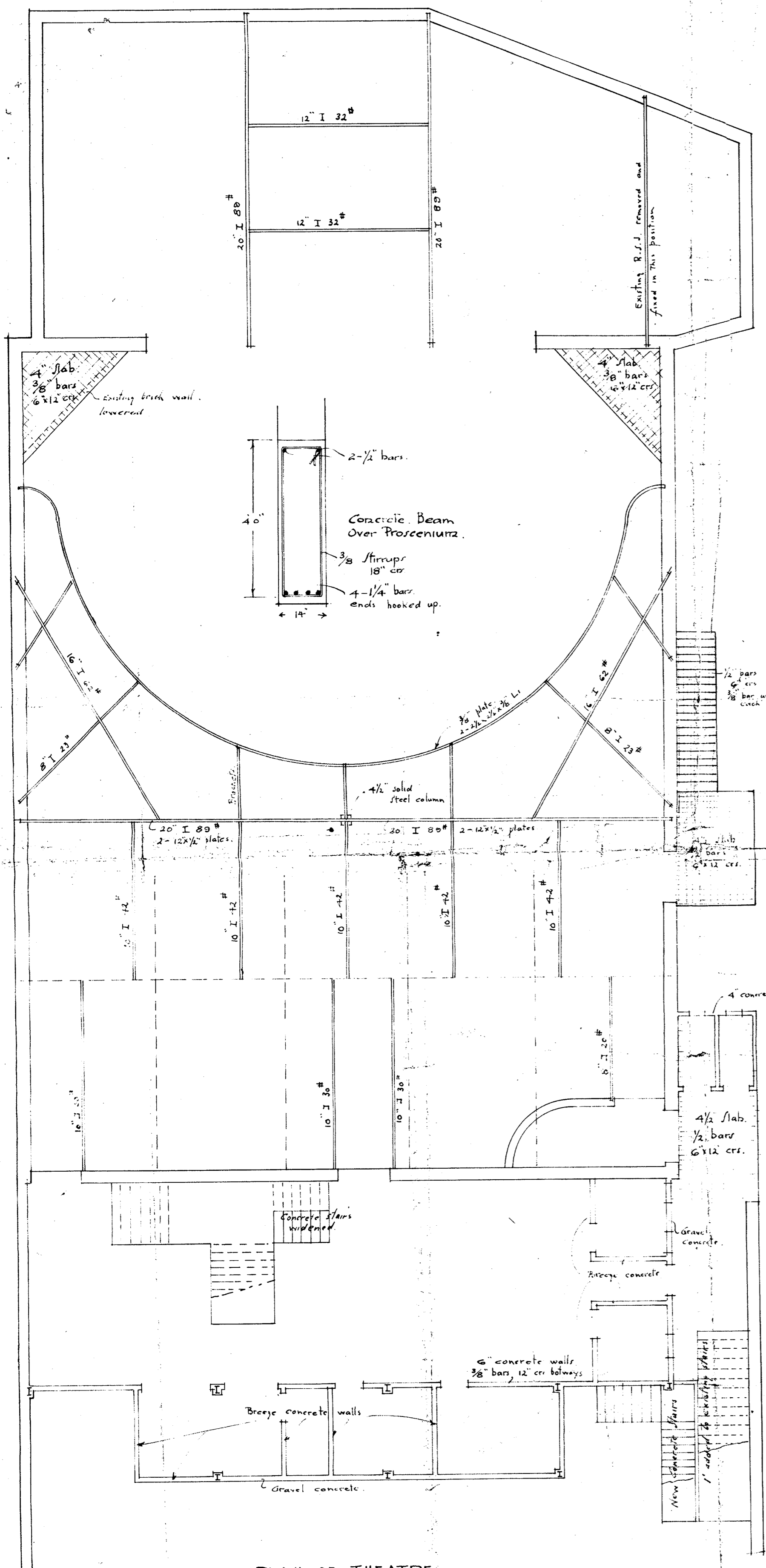
SHEET NO 2  
Scale 3/4" = 1 inch



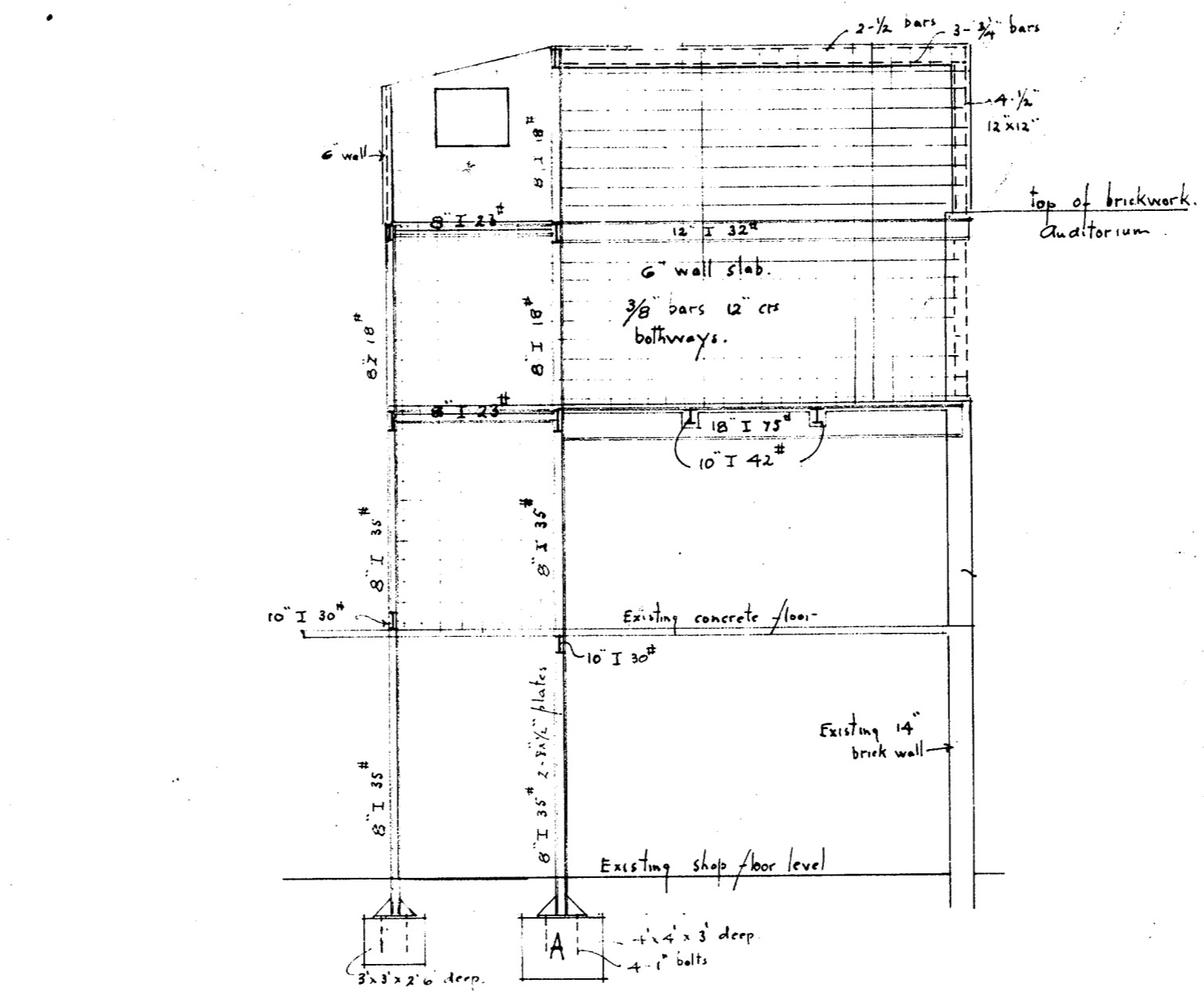
GROUND PLAN ALTERATIONS



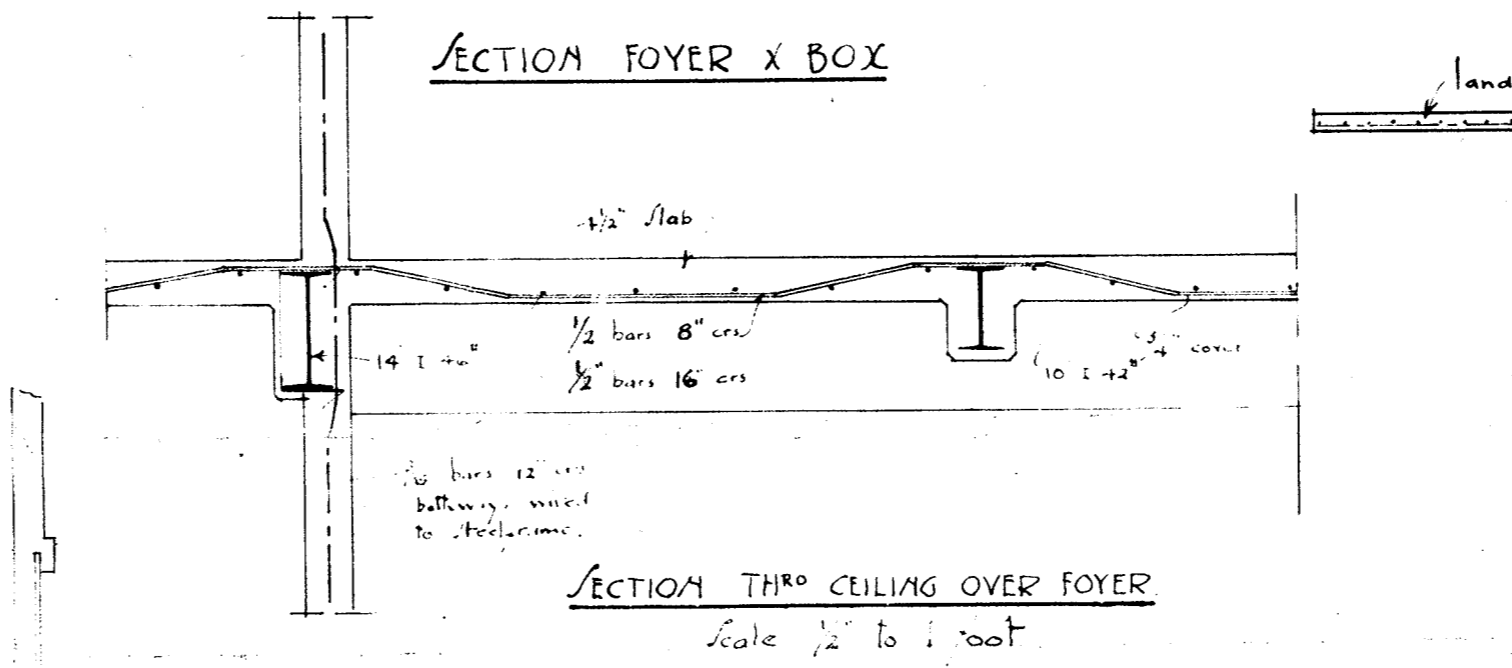
OFFICE & FOYER PLAN ALTERATIONS



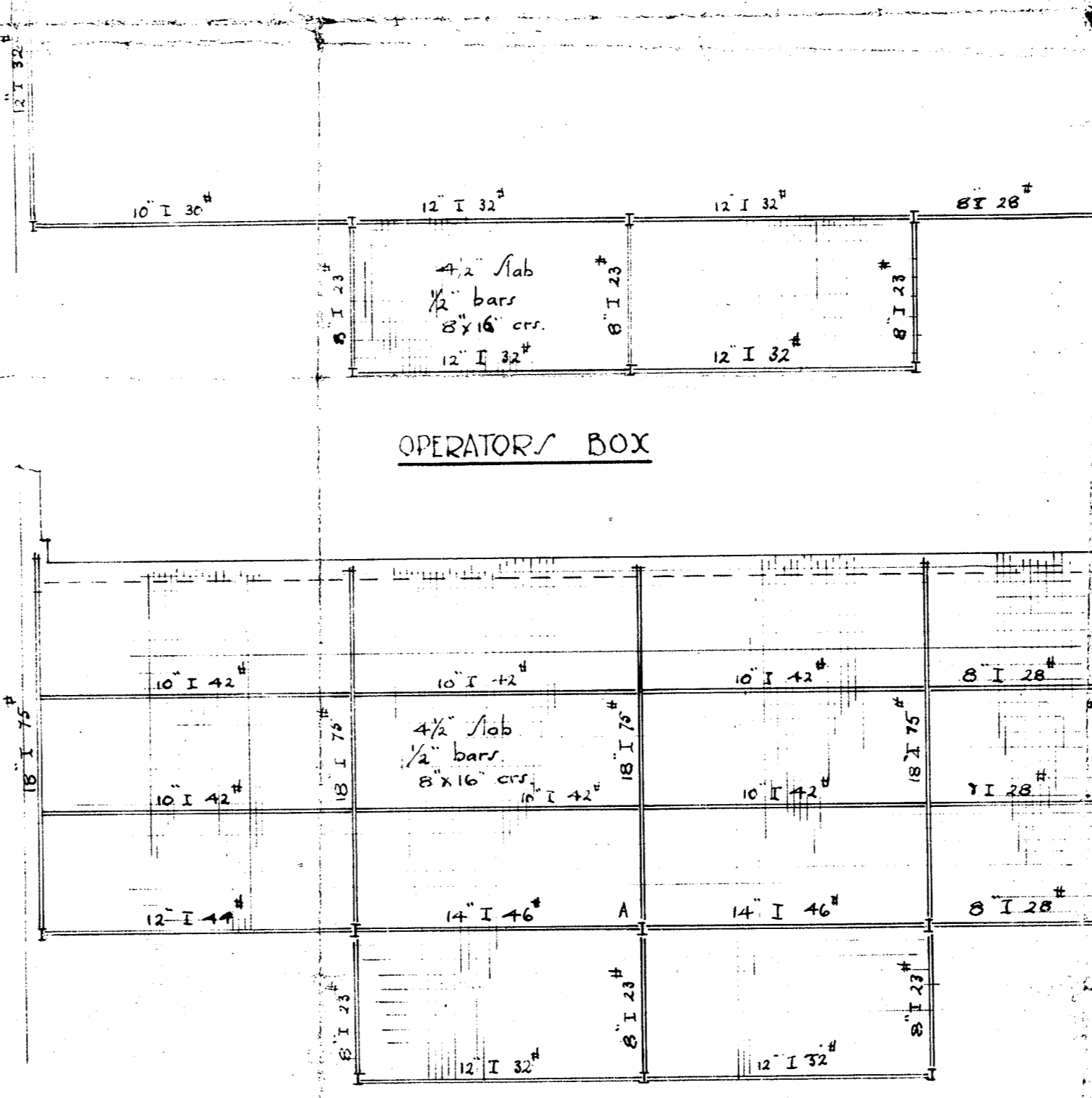
PLAN OF THEATRE



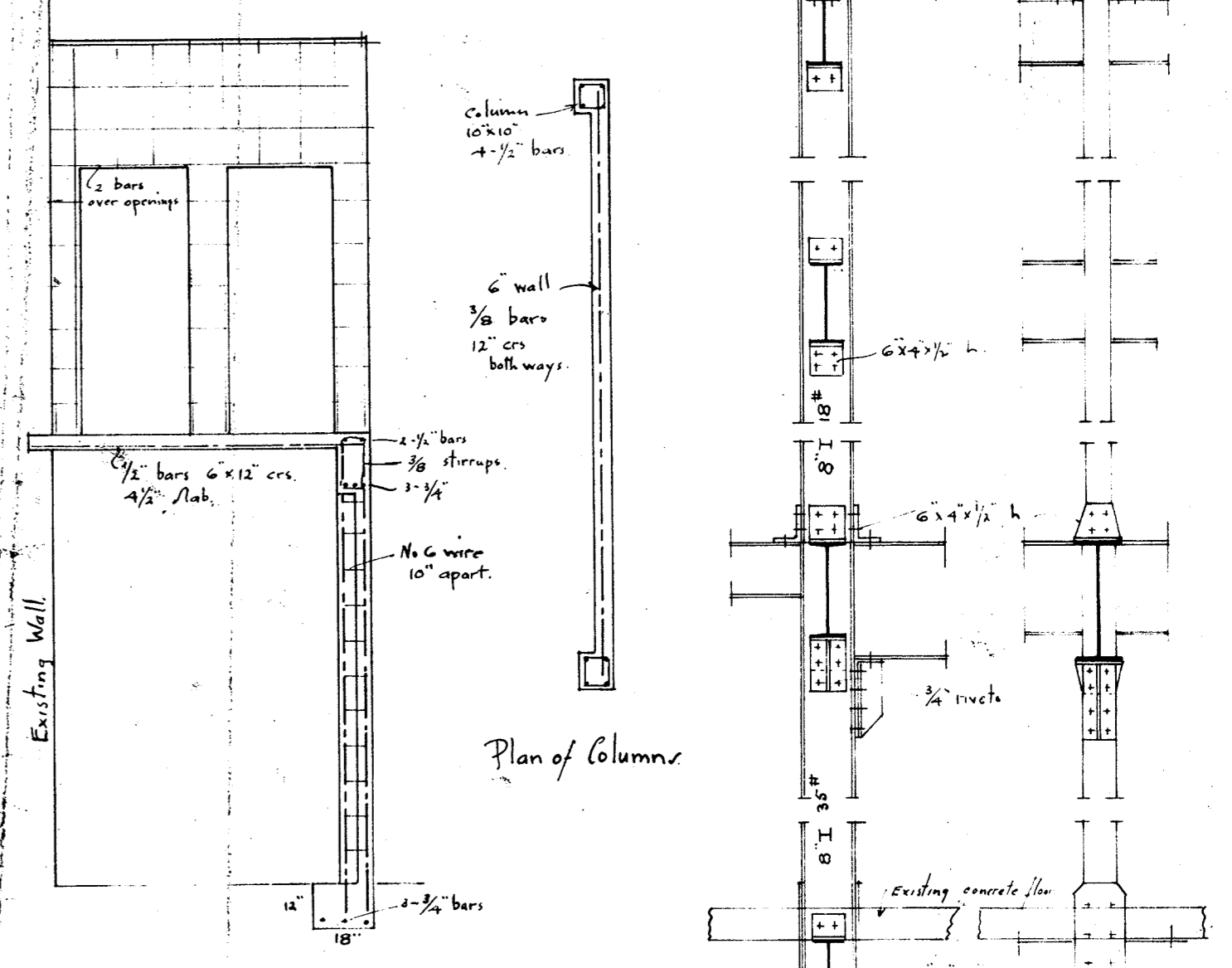
SECTION FOYER X BOX



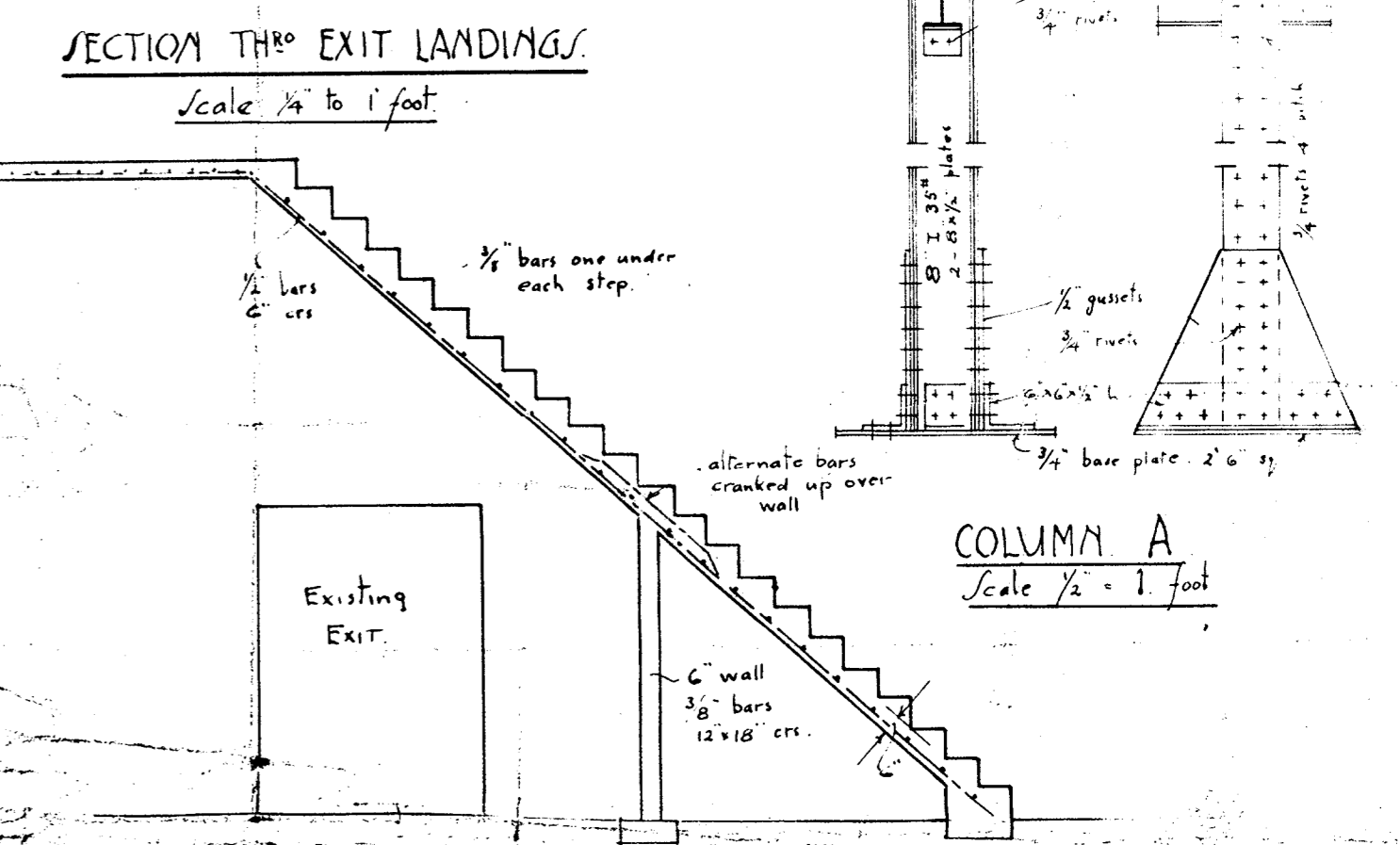
SECTION THRO CEILING OVER FOYER  
Scale 1/2 to 1 foot



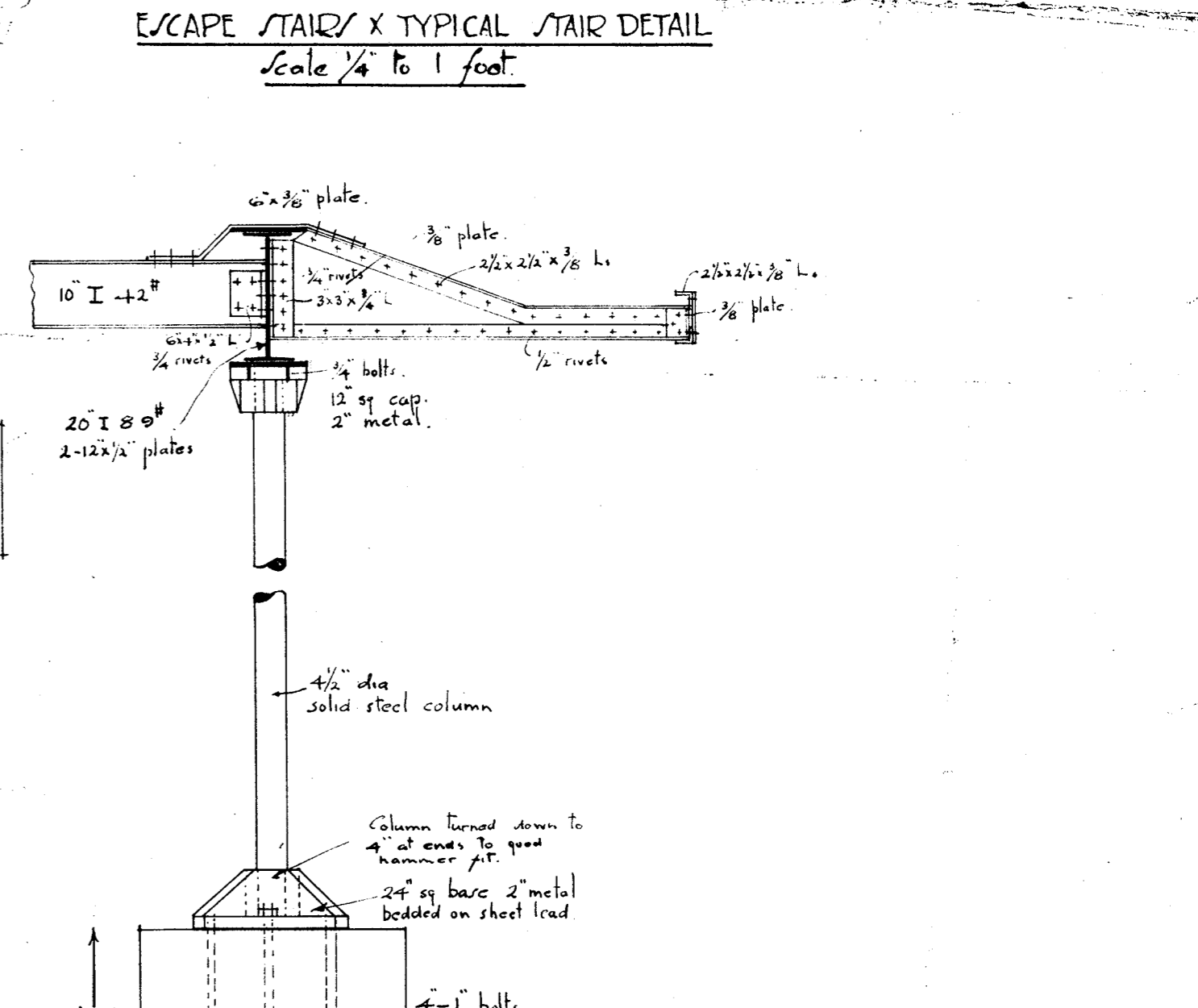
FLOOR ABOVE FOYER



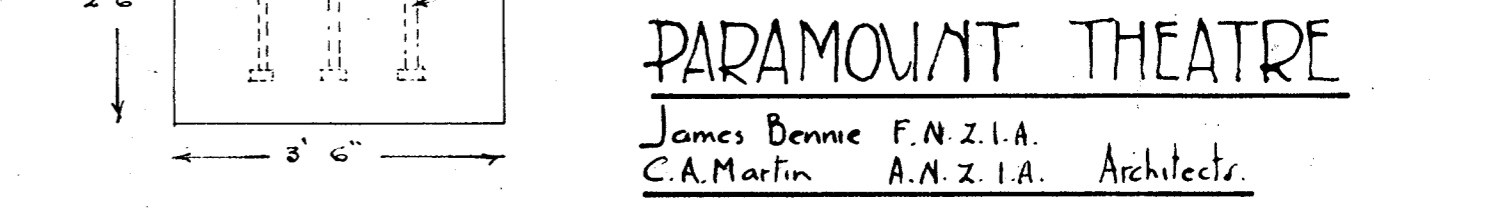
Plan of Columns



SECTION THRO EXIT LANDINGS  
Scale 1/4 to 1 foot



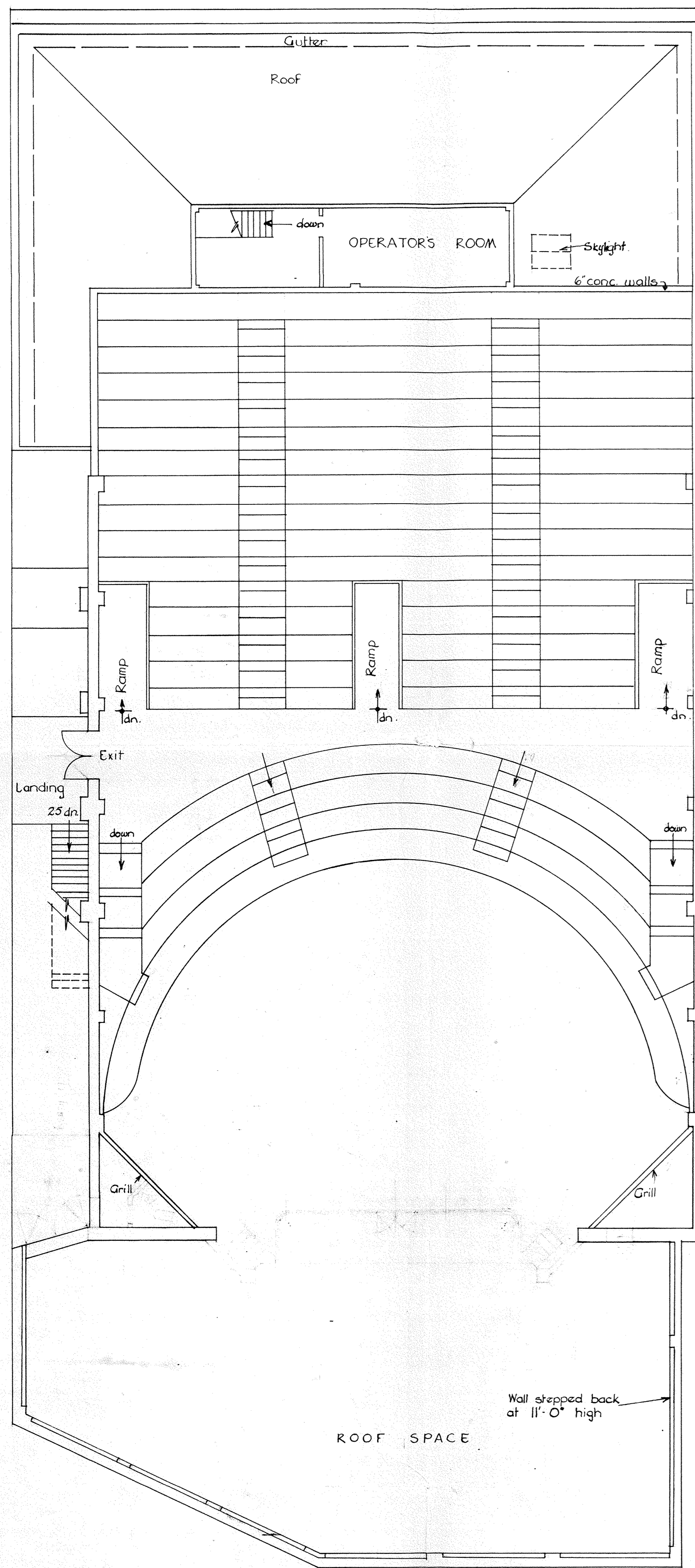
ESCAPE STAIRS X TYPICAL STAIR DETAIL  
Scale 1/4 to 1 foot



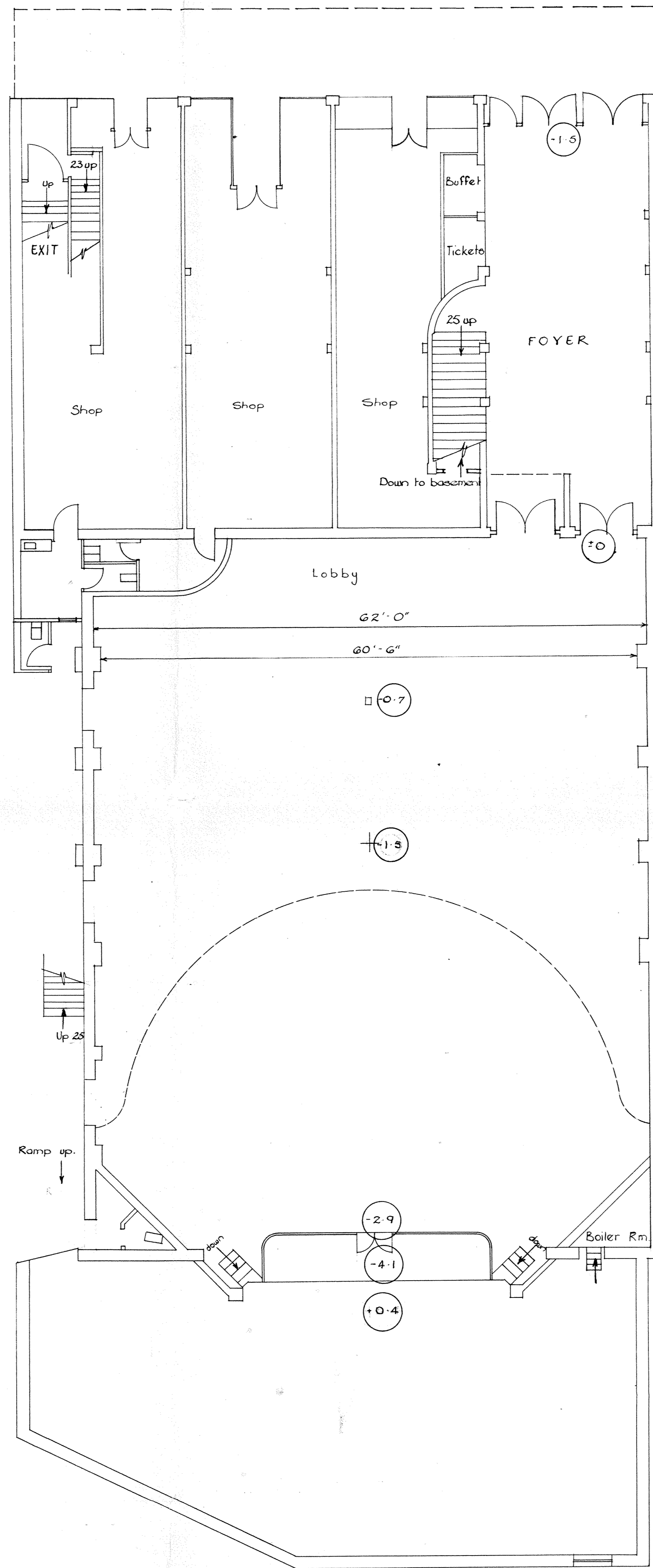
CIRCLE COLUMN X BEAM CONNECTIONS  
Scale 1/2 = 1 ft.

PARAMOUNT THEATRE  
James Bonnie F.N.Z.I.A.  
C.A. Martin A.N.Z.I.A. Architects.

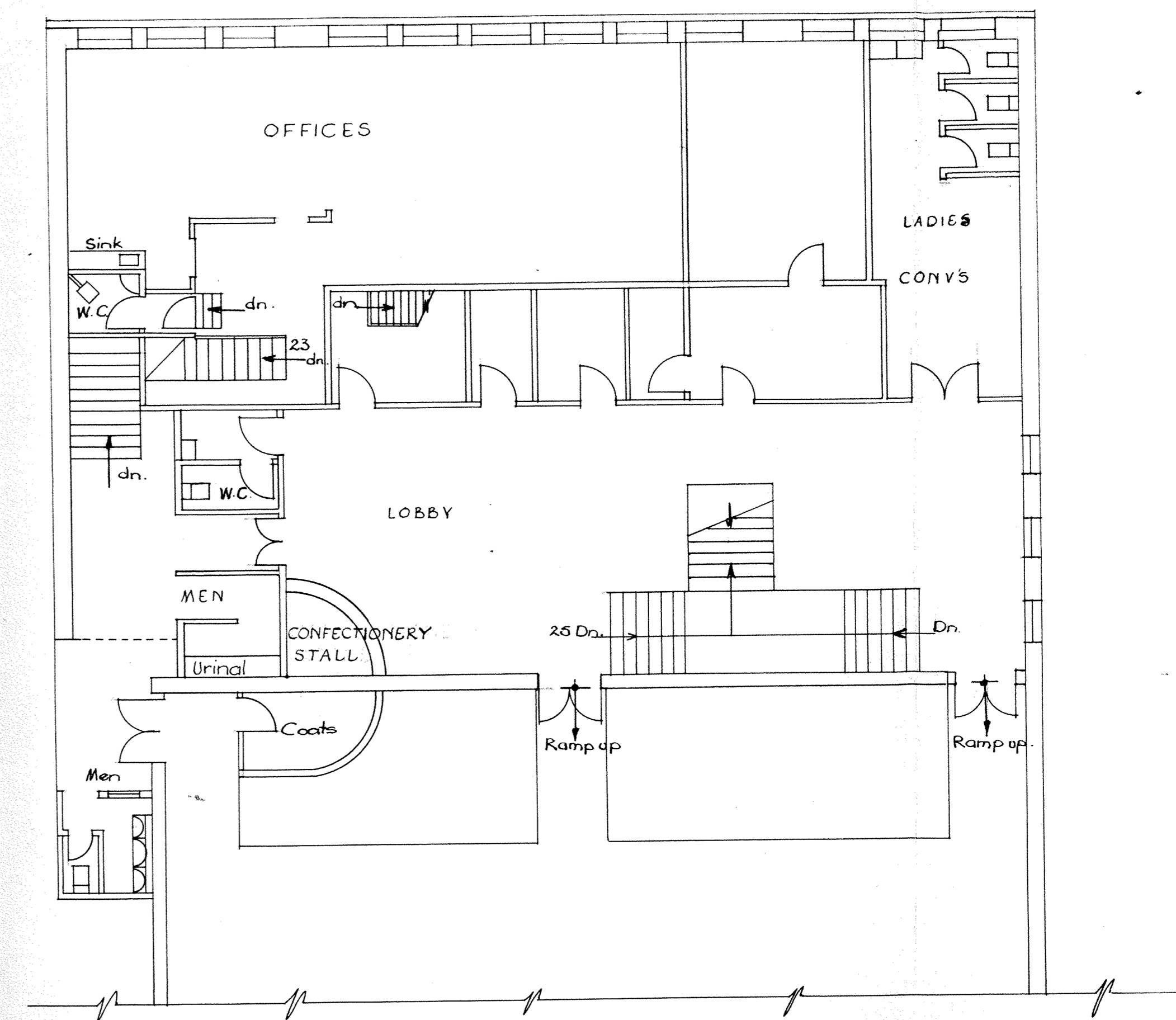
SHEET 3.  
Scale 1/8, 1/4, 1/2



SECOND FLOOR PLAN



GROUND FLOOR PLAN



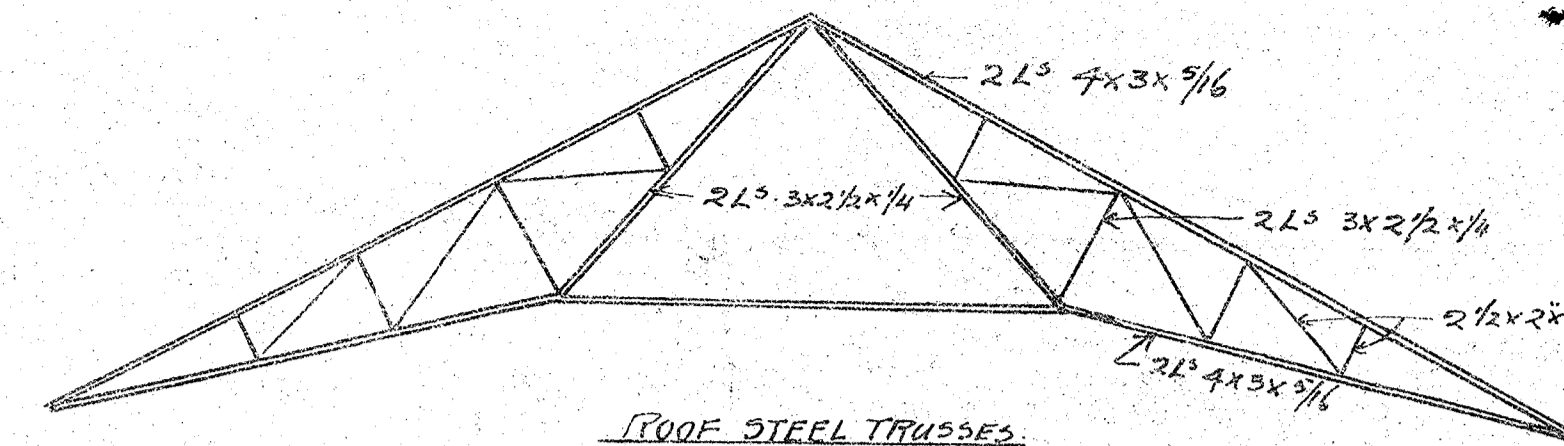
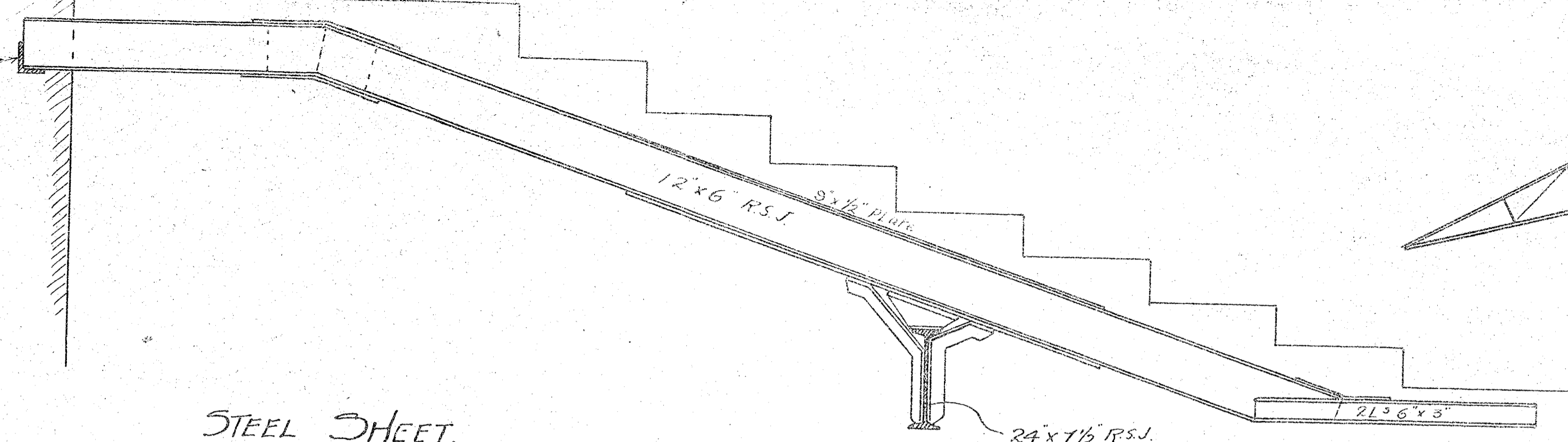
FIRST FLOOR PLAN

WELLINGTON CITY CORPORATION  
CITY ENGINEERS DEPARTMENT  
ARCHITECTURAL BRANCH

PARAMOUNT THEATRE - EXISTING FLOOR PLANS

TRACING NO.	A-L/2		
DESIGNER	J.E.W.	Nov. 1950	
DRAWN	James Bennie	Dec. 1950	
CHECKED	E.G.	May 1950	
APPROVED	J.E.W.		
F. B. C. JEFFREYS, M.A.S.T.C.E. CITY ENGINEER, WELLINGTON, N.Z.			

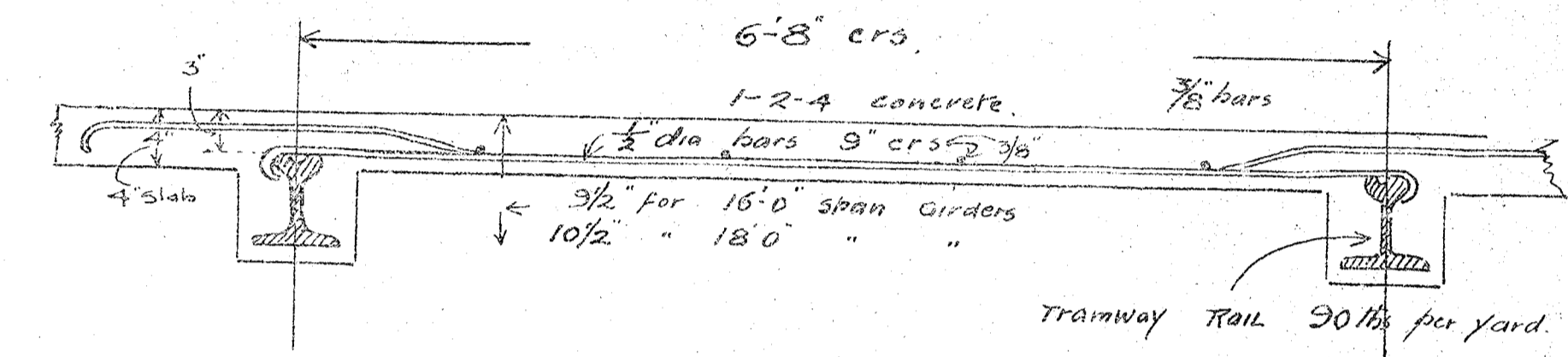
6x6x1/2 L  
4' 0" long



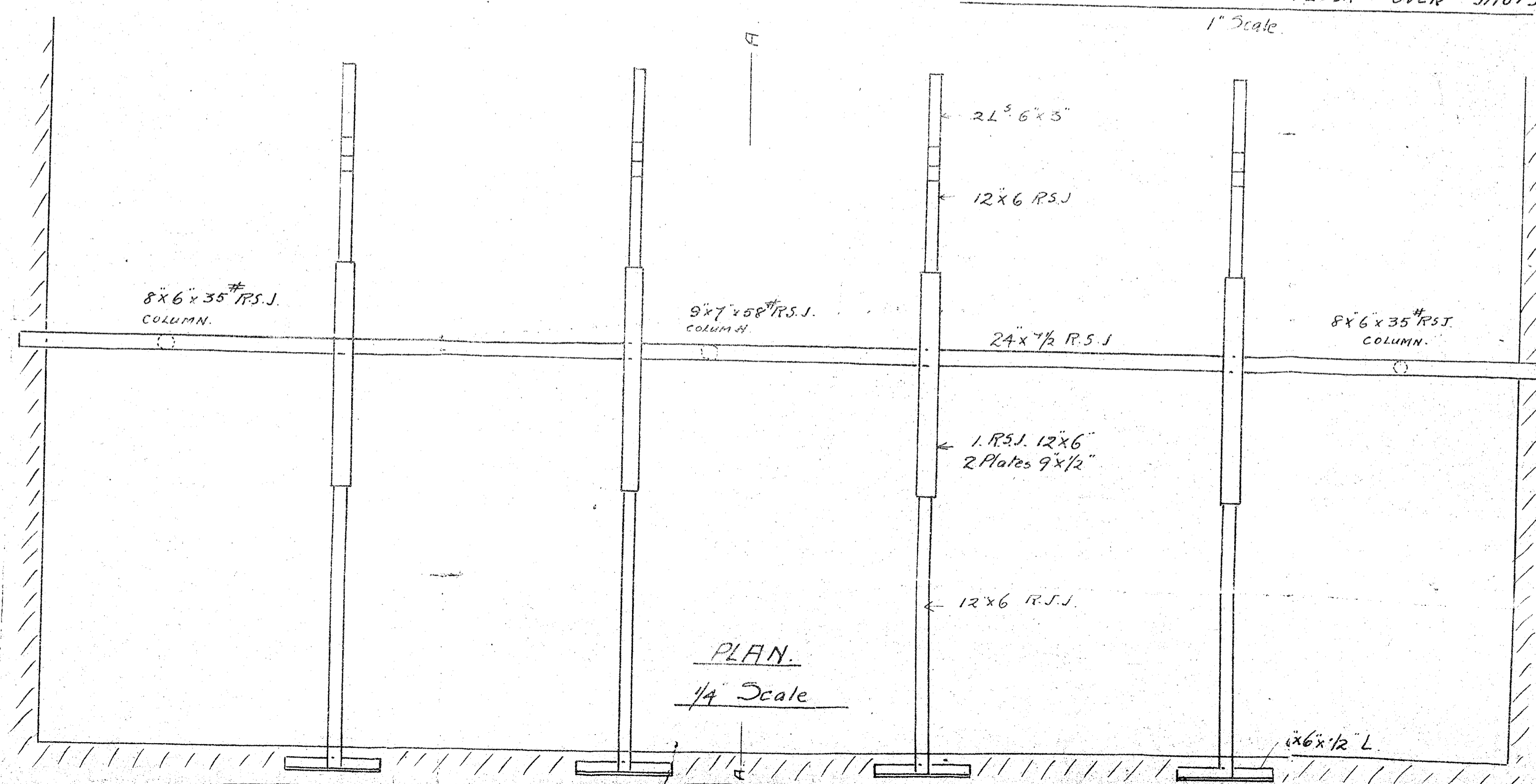
ROOF STEEL TRUSSES  
1/2 Scale.

STEEL SHEET.  
Courtenay place THEATRE.  
James Bennie  
Architect

SECTION A.A.  
1/2" Scale.



DETAIL OF OFFICE FLOOR OVER SHOPS.  
1" Scale.



PLAN.  
1/4 Scale