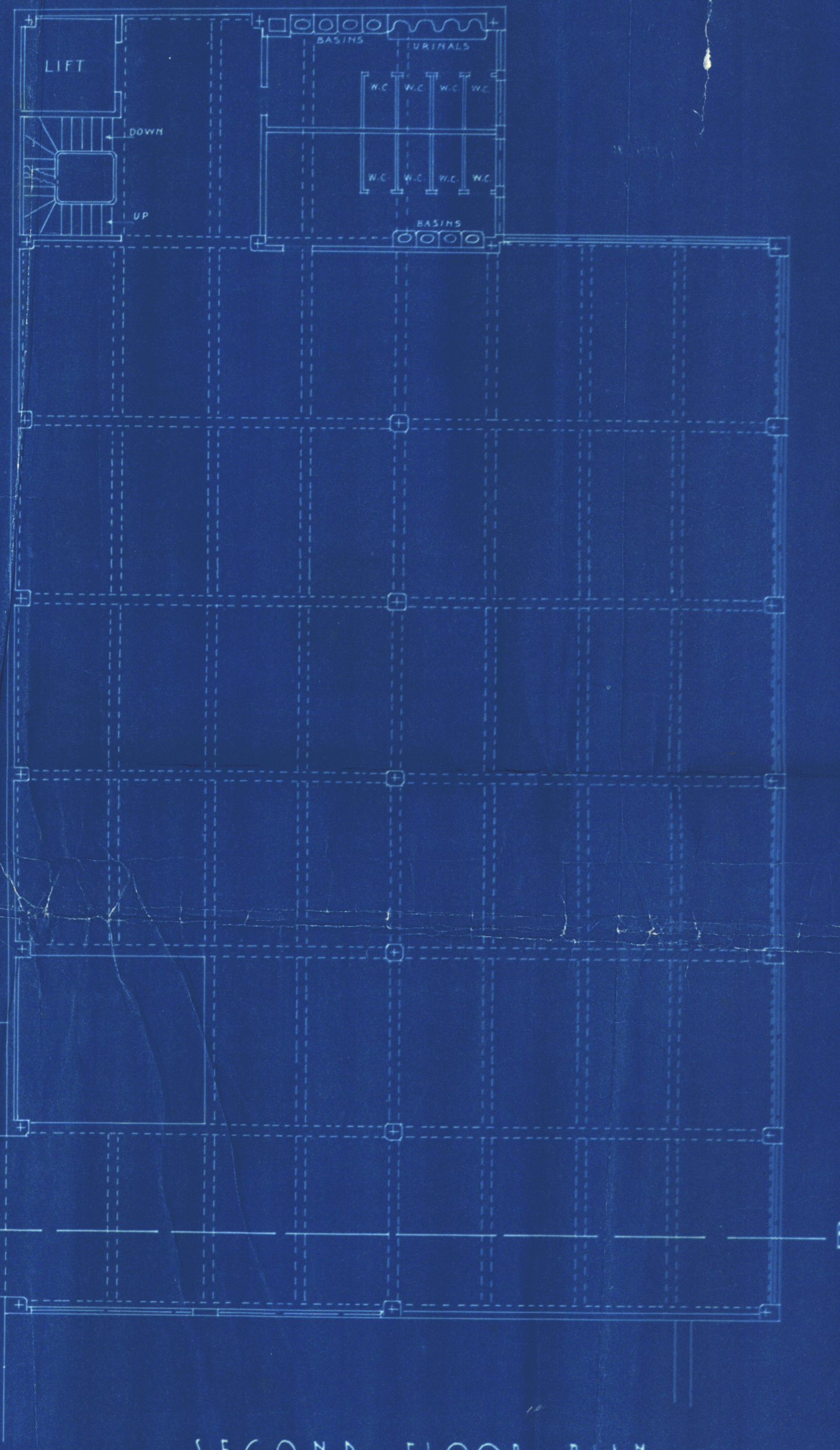


FIRST FLOOR PLAN



SECOND FLOOR PLAN

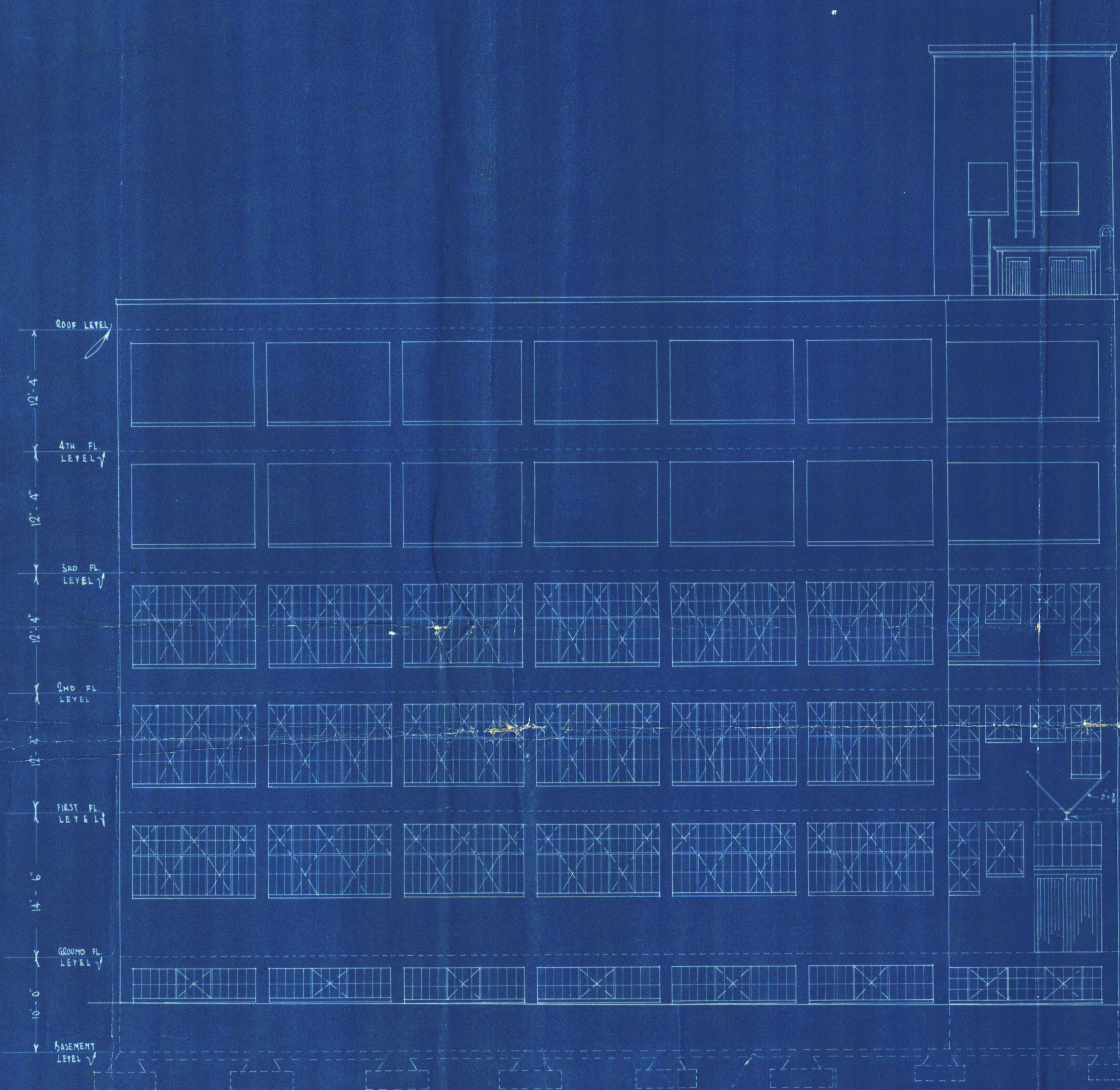


*J.M.D.*

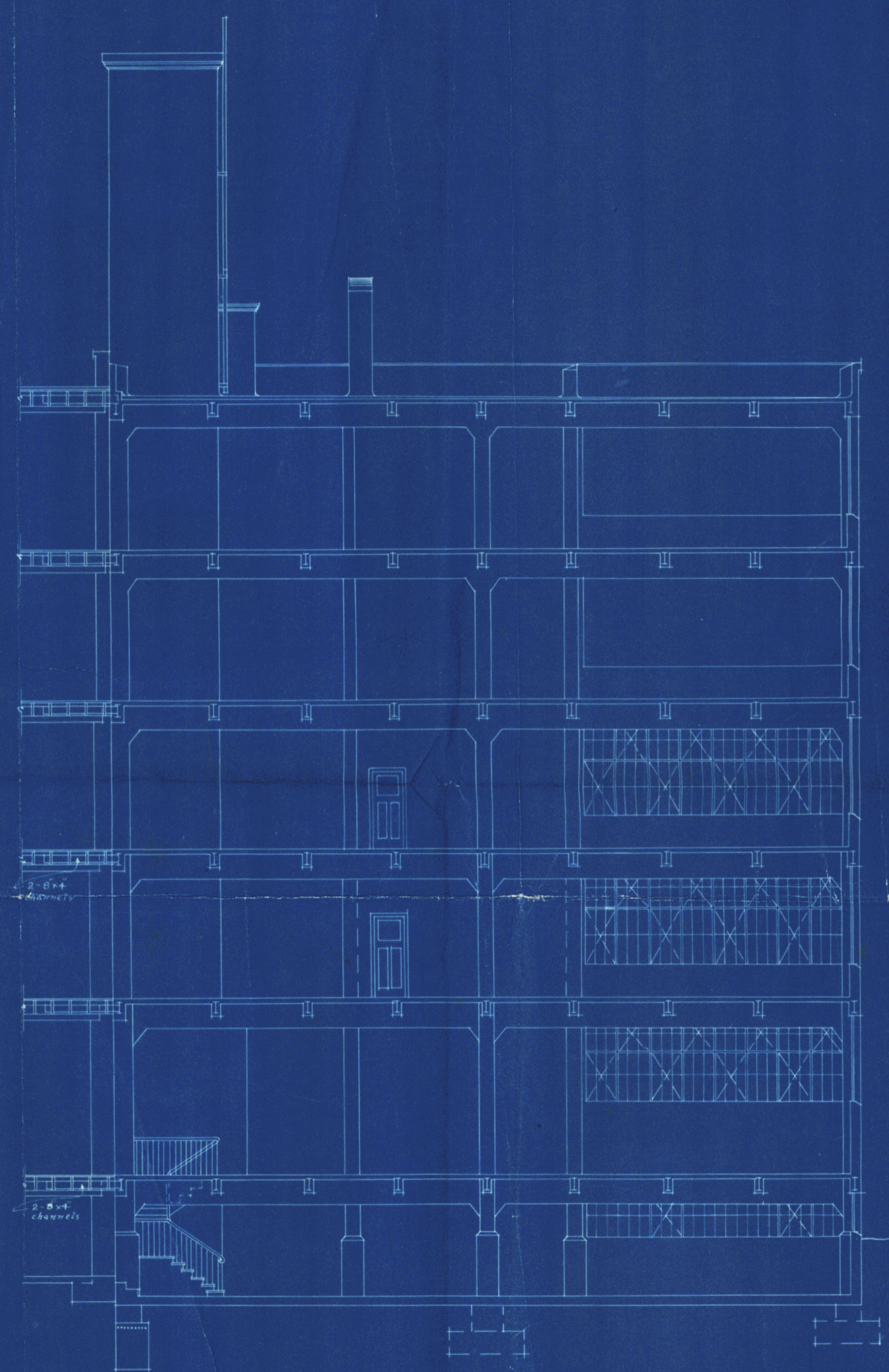
J. M. Dawson  
 J. A. Dawson  
 327/3 Oct 1921

PROPOSED STEEL FRAME PREMISES FOR MESSRS JAMES SMITH LIMITED.

J. M. DAWSON F.R.Z.I.A.  
 ARCHITECT - WELLINGTON.  
 SCALE - 8 FT. TO 1 INCH.



EAST ELEVATION



SECTION A-B



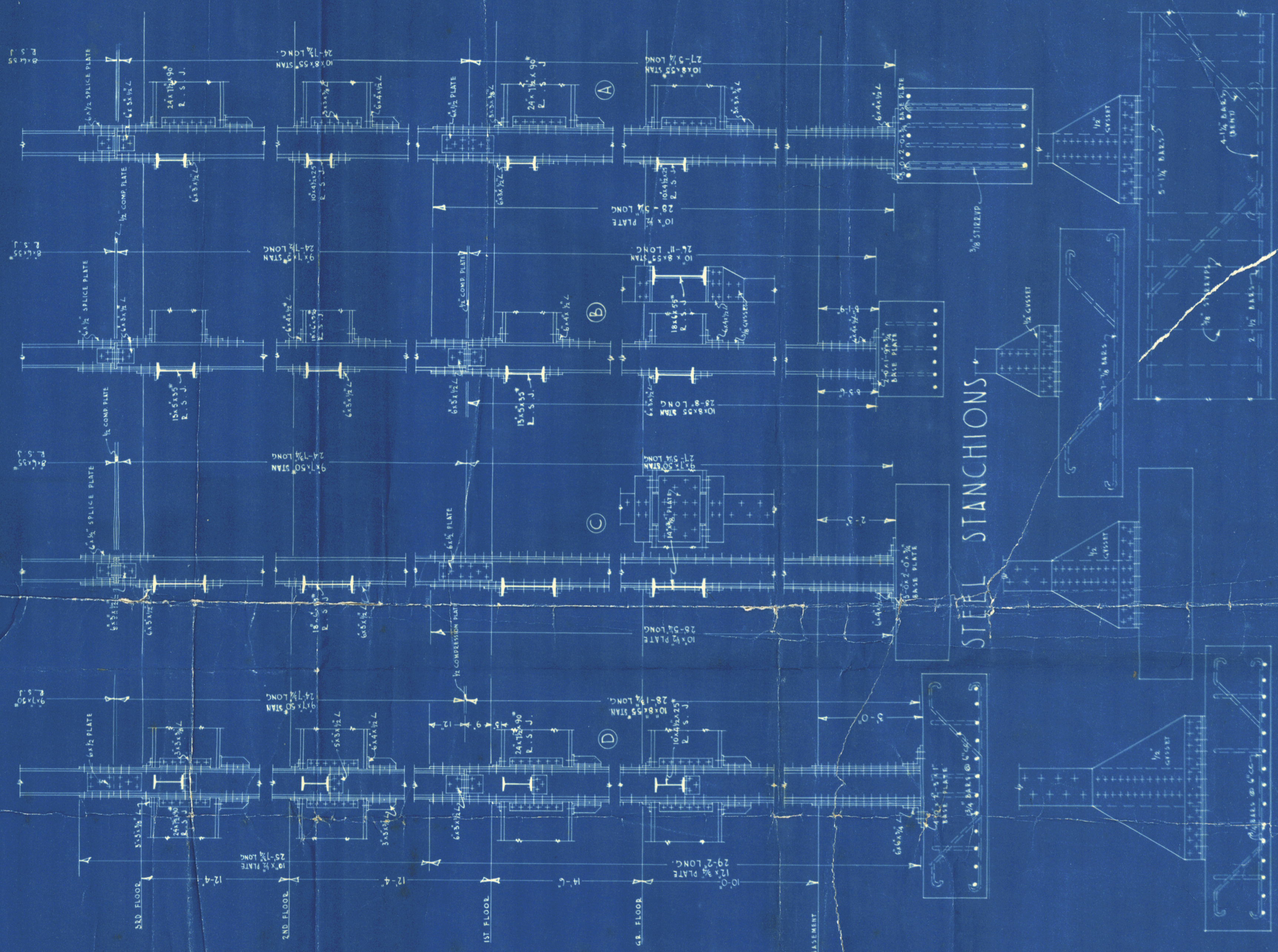
8x4 CATHEAD  
6'-0" PROTECTION

DRAWN BY J. M. Dawson  
 TRACED BY A. S. Douglas + J. H. K.  
 No. 327/4 DATE Oct '26

PROPOSED STEEL FRAME PREMISES FOR MESSRS JAMES SMITH LIMITED.

J. M. DAWSON F.M.I.A.  
 ARCHITECT - WELLINGTON.  
 SCALE - 8 FT. TO 1 INCH.

*J. M. Dawson*

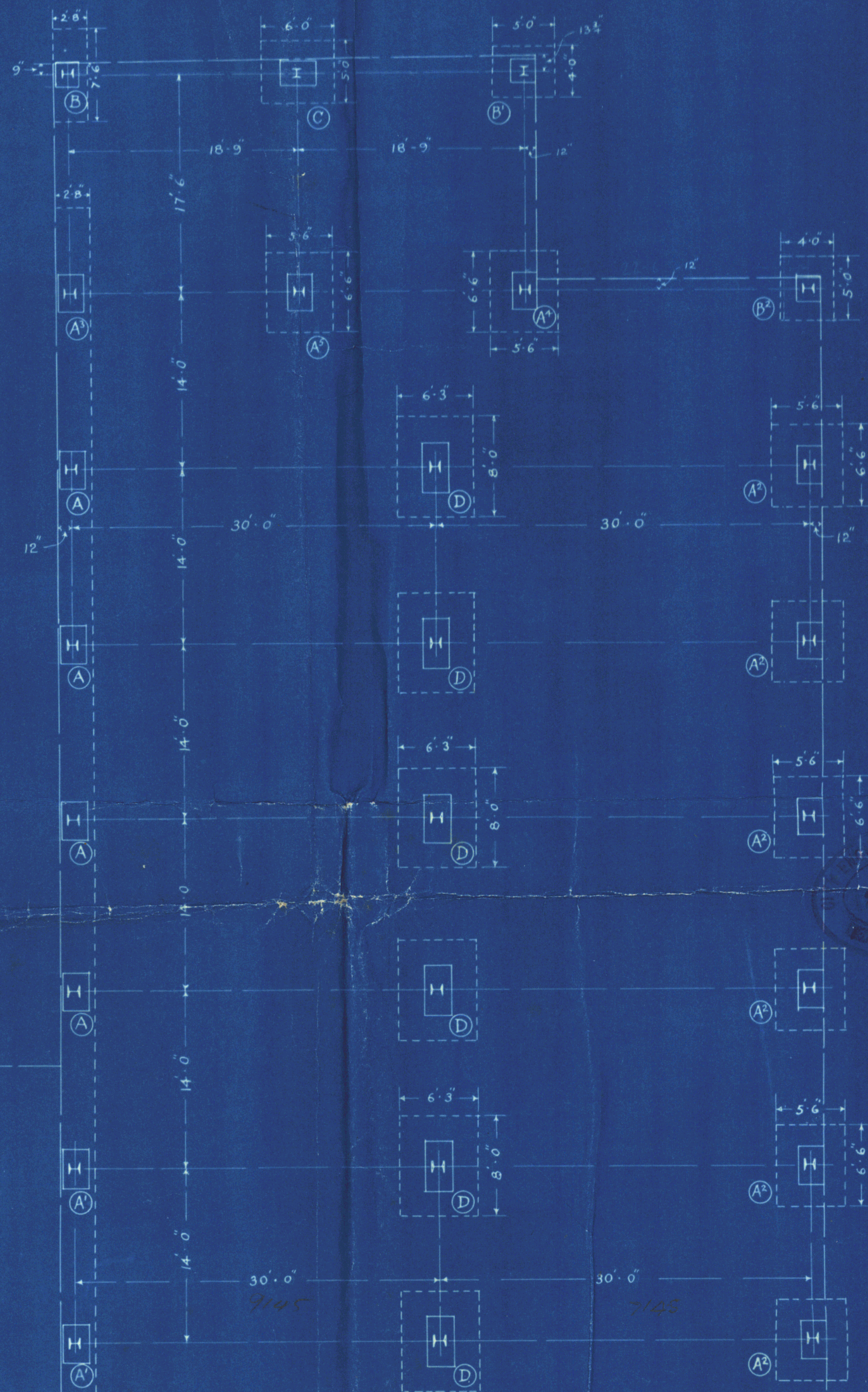


STEEL STANCHIONS

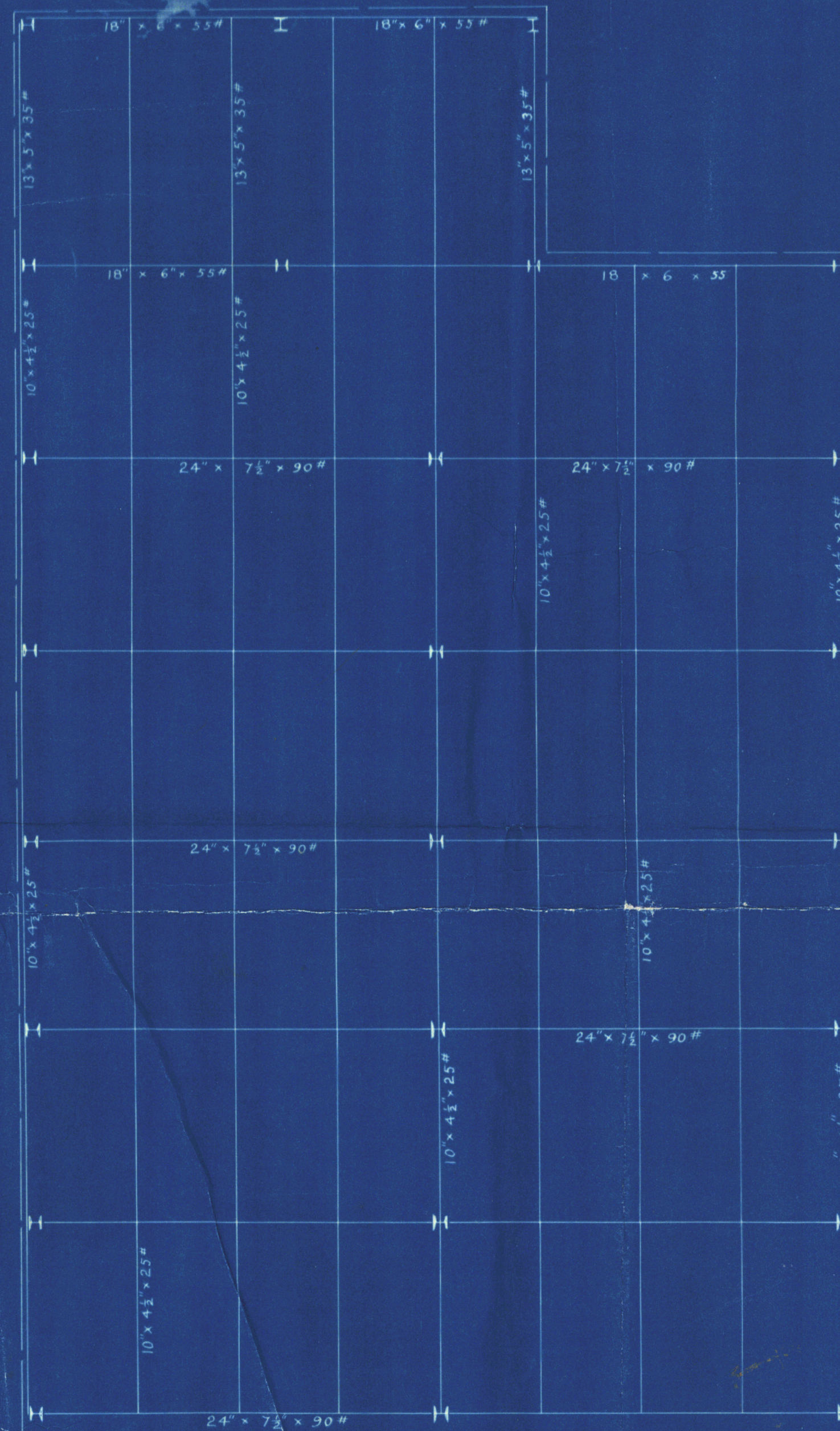
DRAWN BY J.W.D.  
CHECKED BY F.D. Perry  
No. 227/5 DATE March 1927

PROPOSED STEEL FRAME PREMISES FOR MESSERS JAMES SMITH LTD - 1/2 INCH STEEL DETAILS

J.M. DAWSON F.N.Z.I.A.  
ARCHITECT - WELLINGTON  
SCALE: - 2 FEET TO 1 INCH



FOUNDATION PLAN



UPPER FLOORS

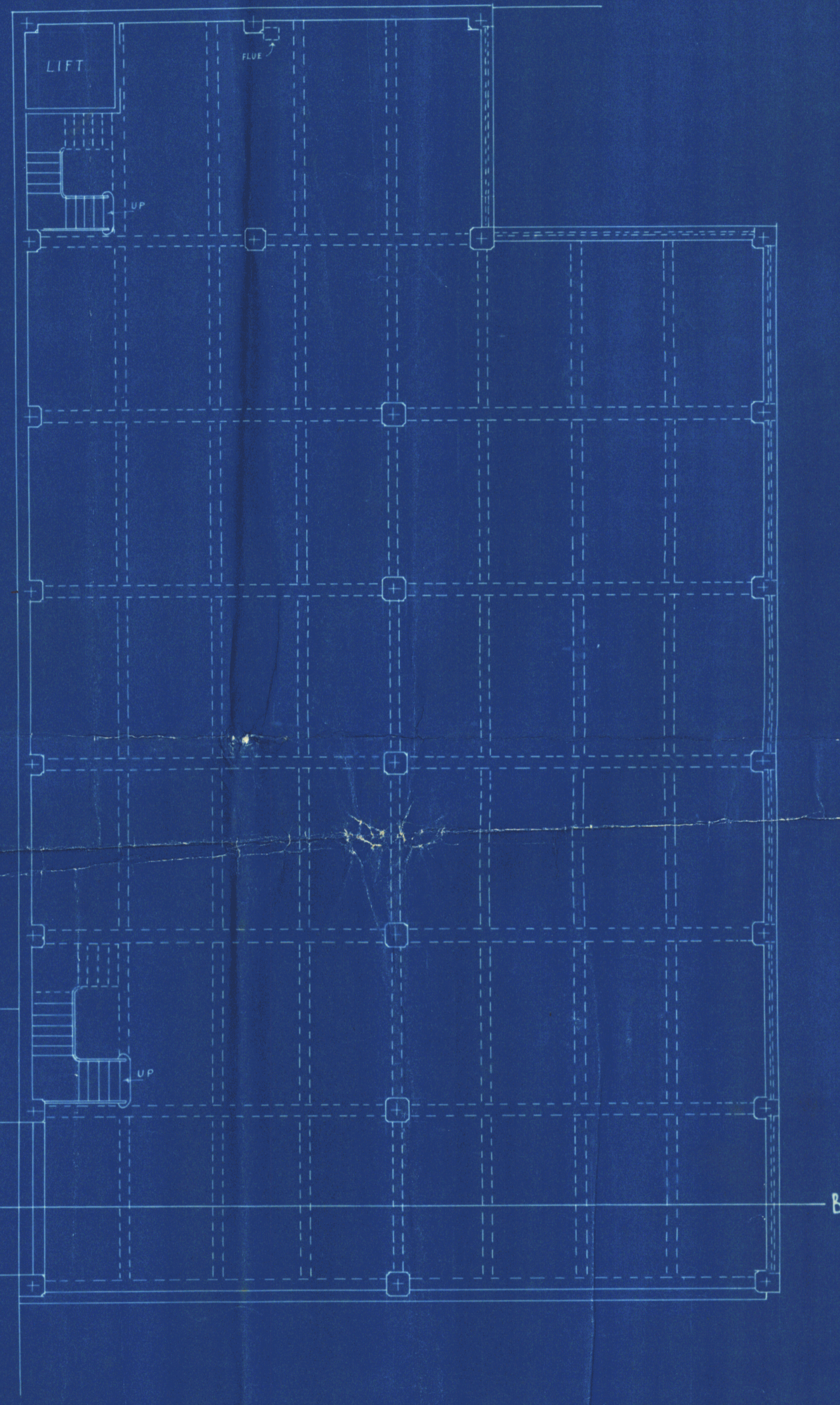
STEEL FABRICATION

PROPOSED STEEL FRAME PREMISES FOR MESSRS JAMES SMITH LIMITED.

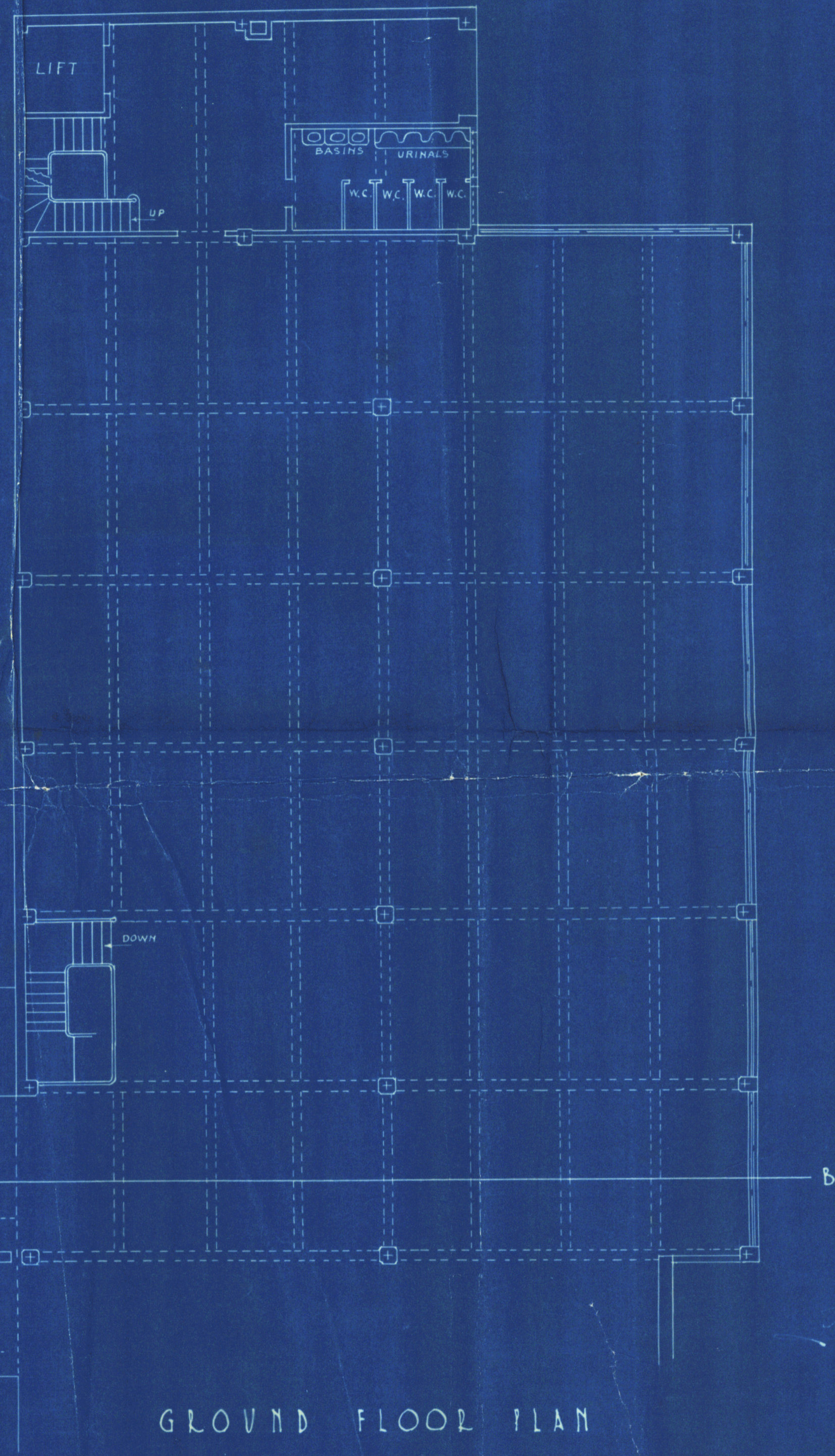
327/1  
 J. M. Dawson  
 J. A. Dawson  
 Oct '26.

J. M. DAWSON F.N.Z.I.A.  
 ARCHITECT - WELLINGTON  
 SCALE - 8 FT. TO 1 INCH

*J. M. Dawson*



BASEMENT FLOOR PLAN



GROUND FLOOR PLAN



EXISTING BUILDING

EXISTING BUILDING

PROPOSED STEEL FRAME PREMISES FOR MESSRS JAMES SMITH LIMITED.

327/2  
 J. Dawson  
 & Dawson  
 Oct. 1926

J.M. DAWSON F.N.Z.I.A.  
 ARCHITECT - WELLINGTON.  
 SCALE - 8 FT. TO 1 INCH.