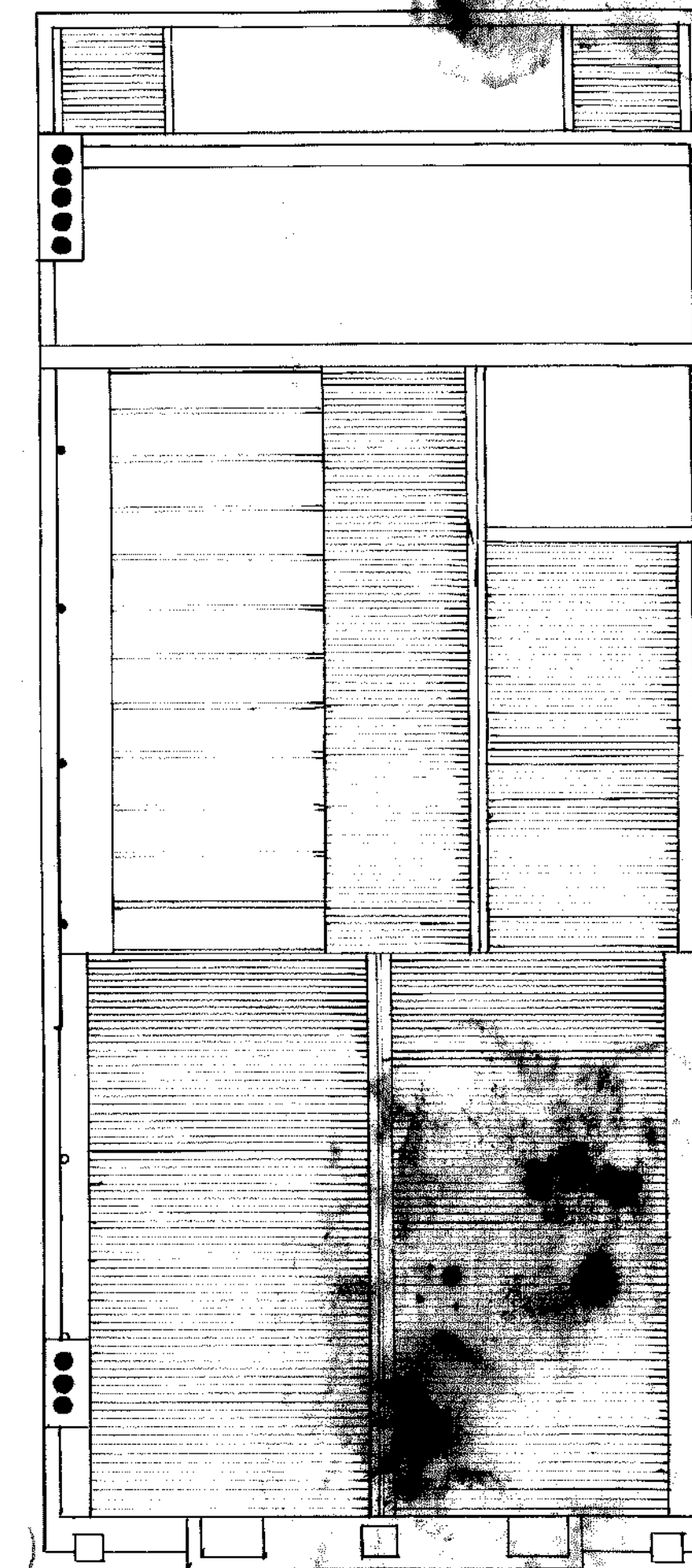
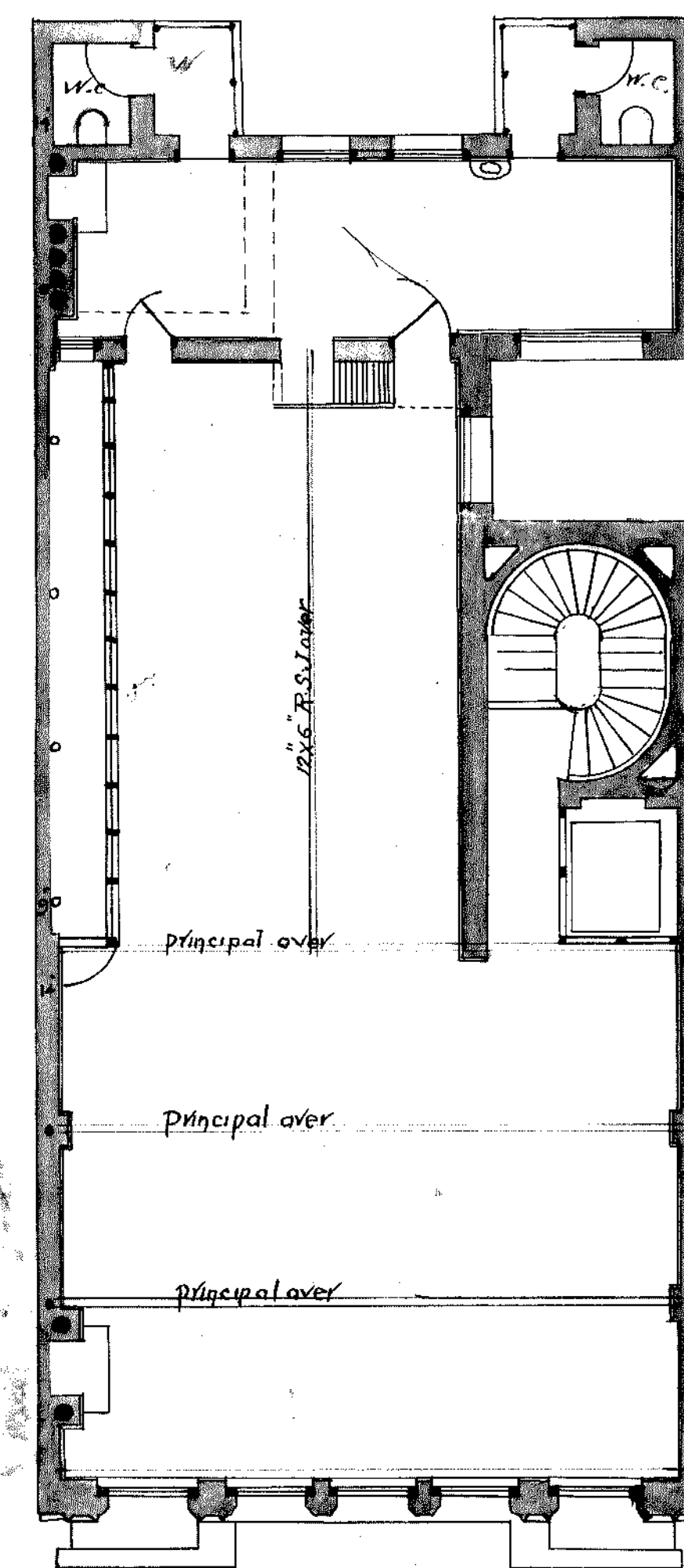
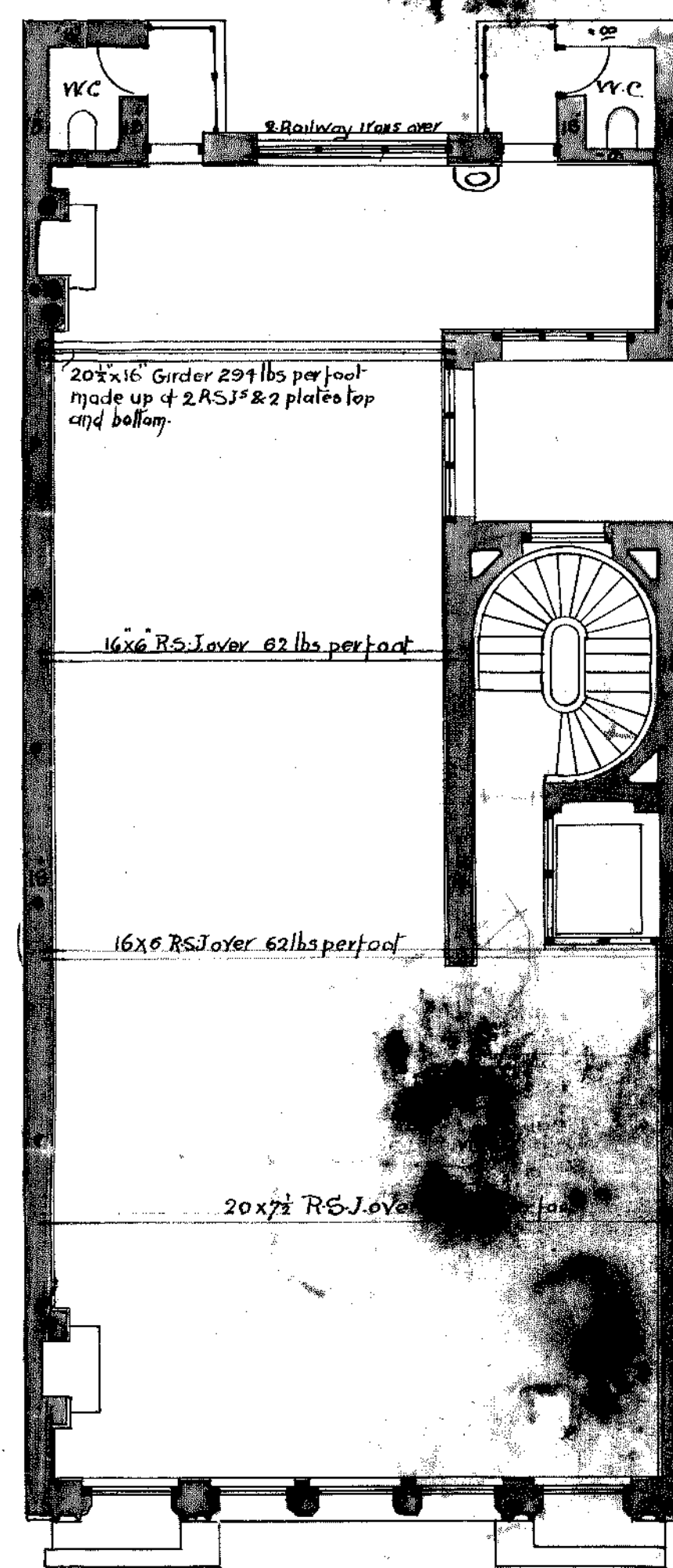
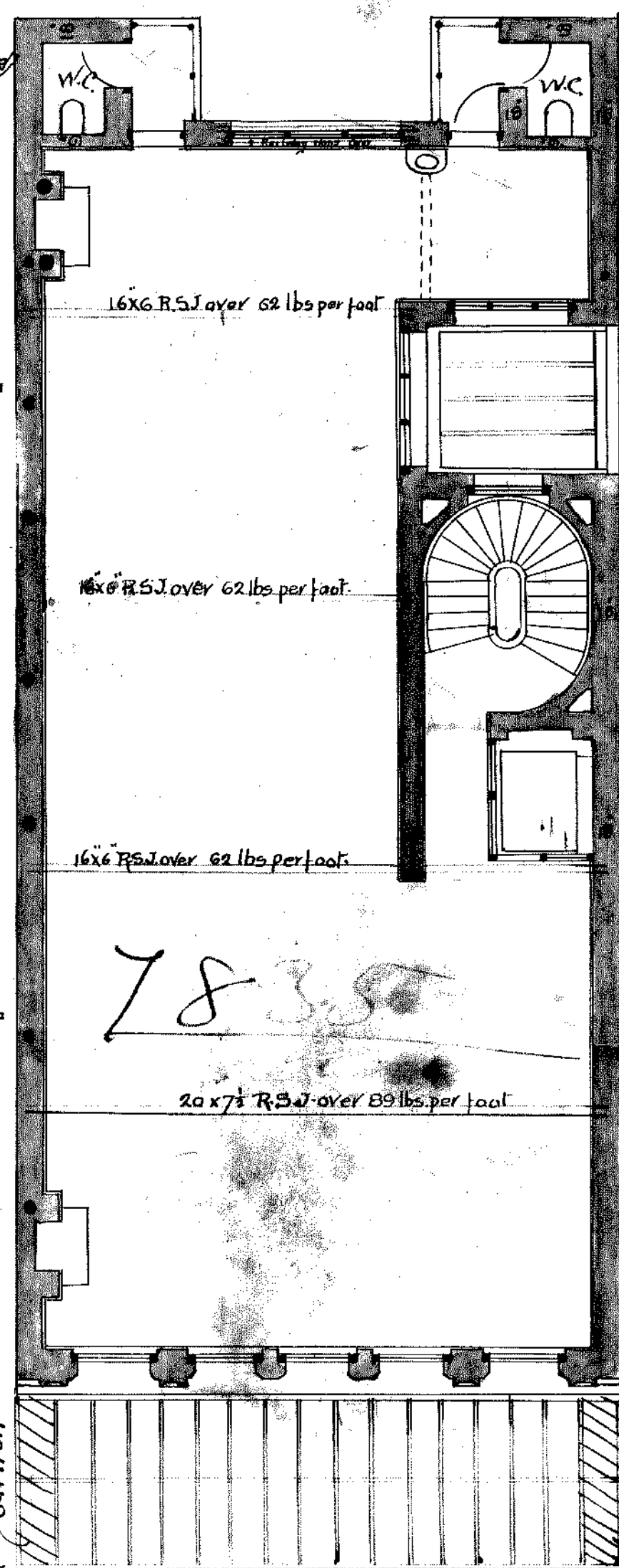
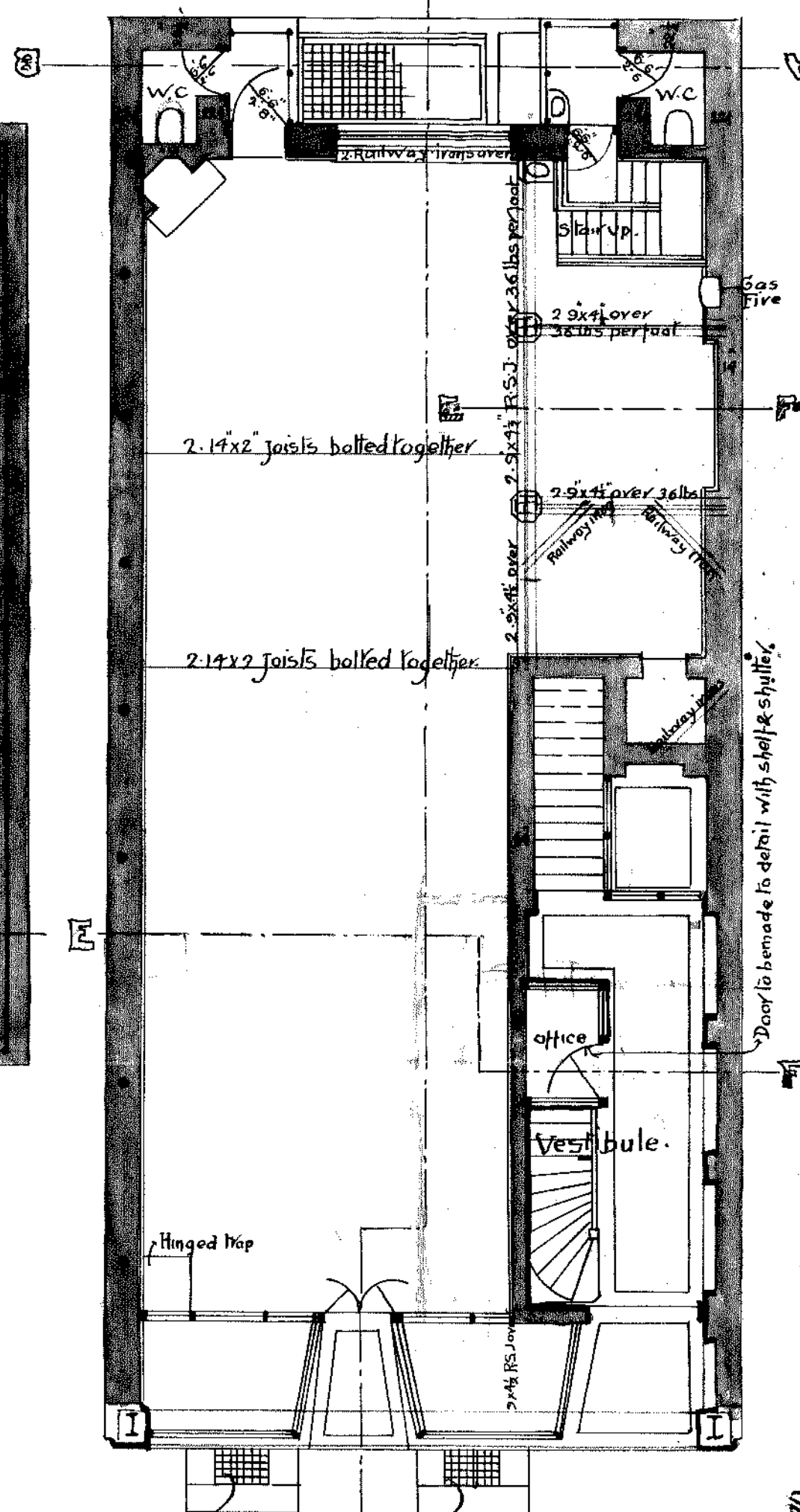
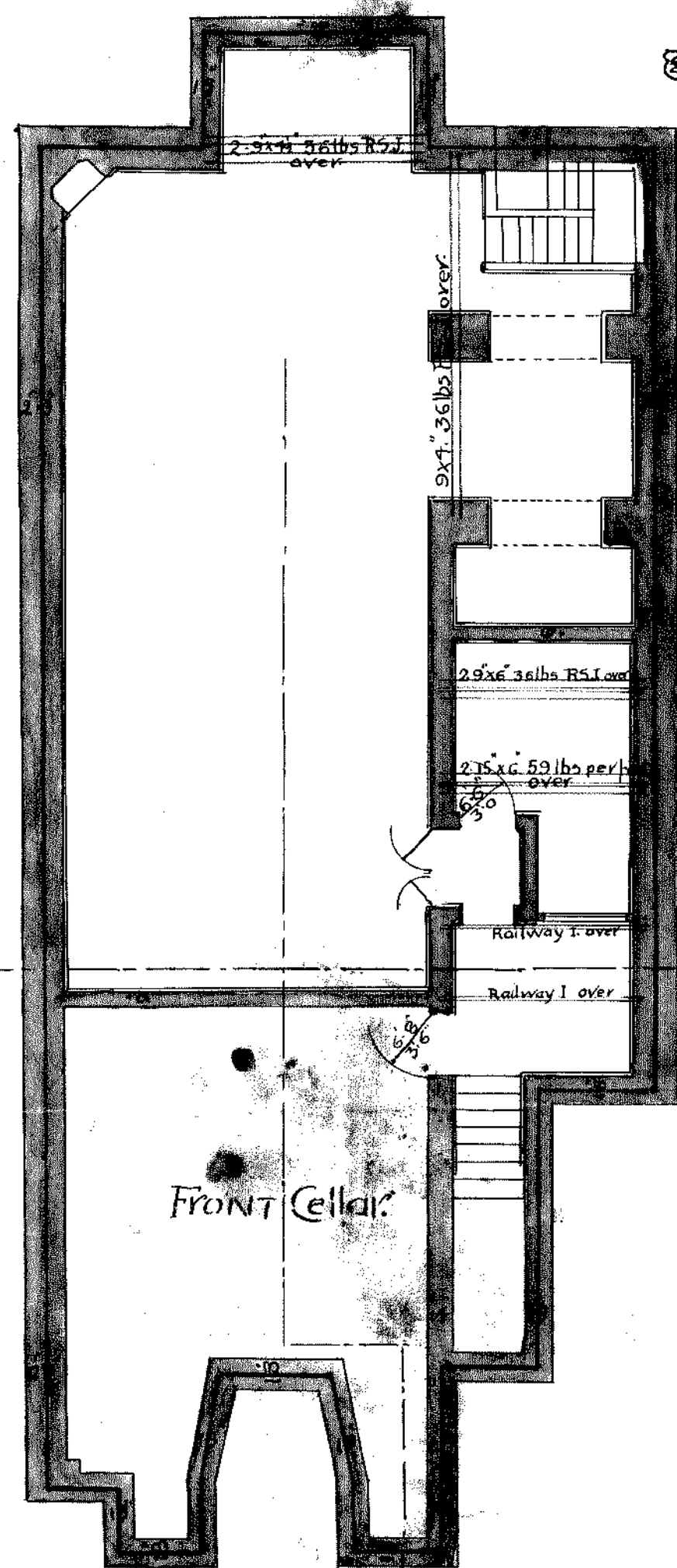
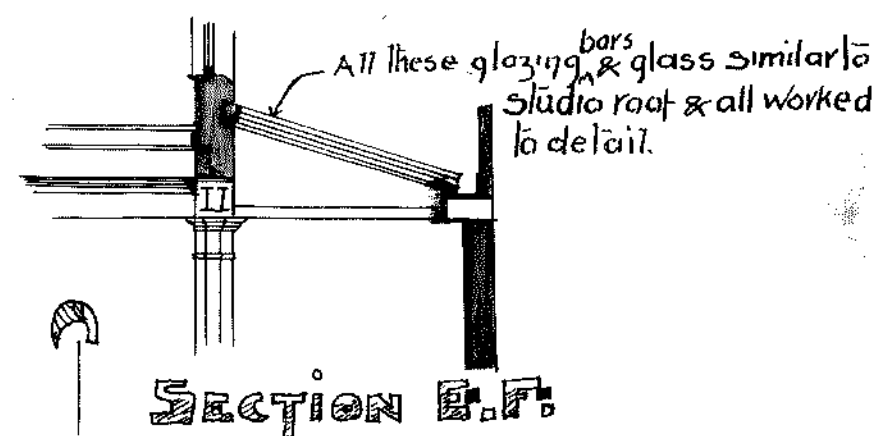


BUSINESS PREMISES CUBA ST

Scale 3/8" = 1'-0"

DRAWING N^o. 1.



Pavement light not included in permit
M. Brown

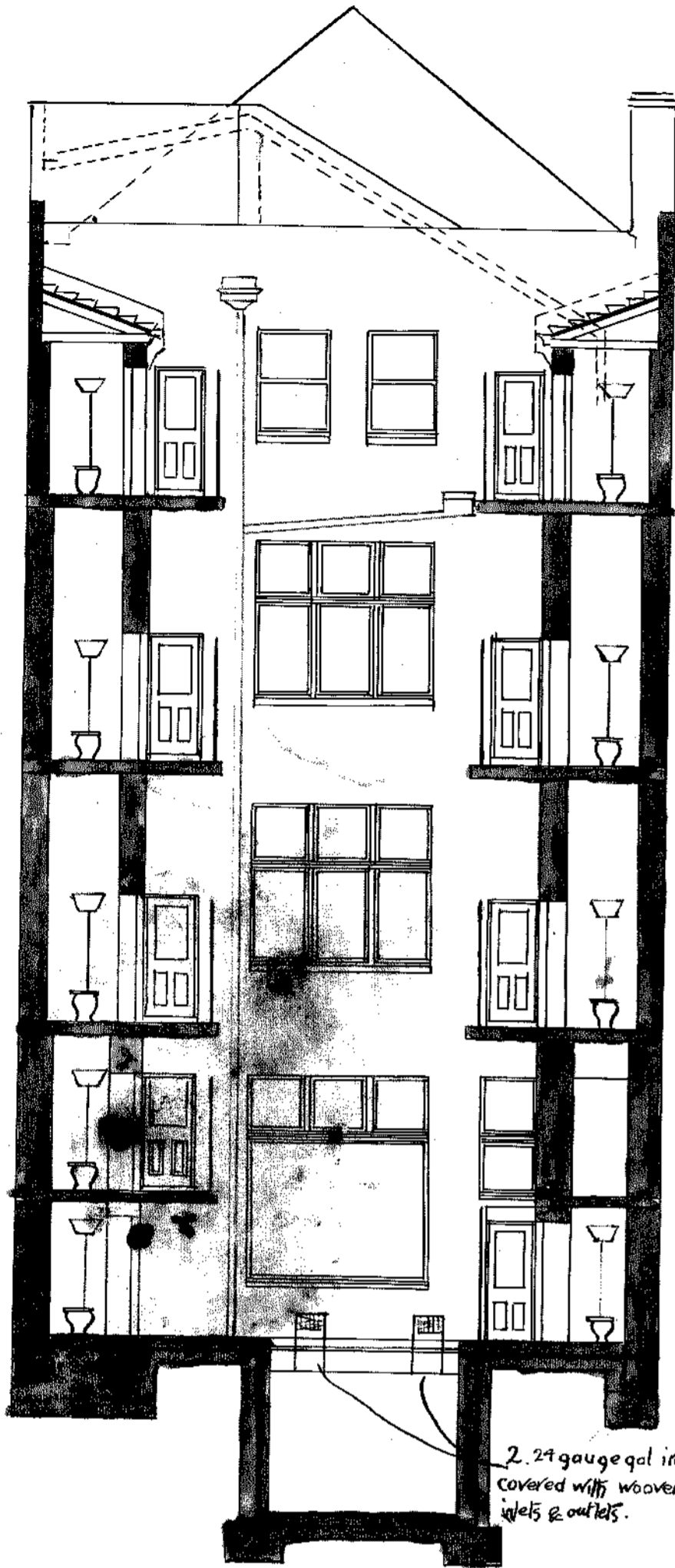
1907

ARCHITECT
 110 N. 10th St. ST. LOUIS, MO.

Handwritten: 1000 1/2 1/2 1/2
DRAWING N° 2

BUSINESS PREMISES CUBA ST

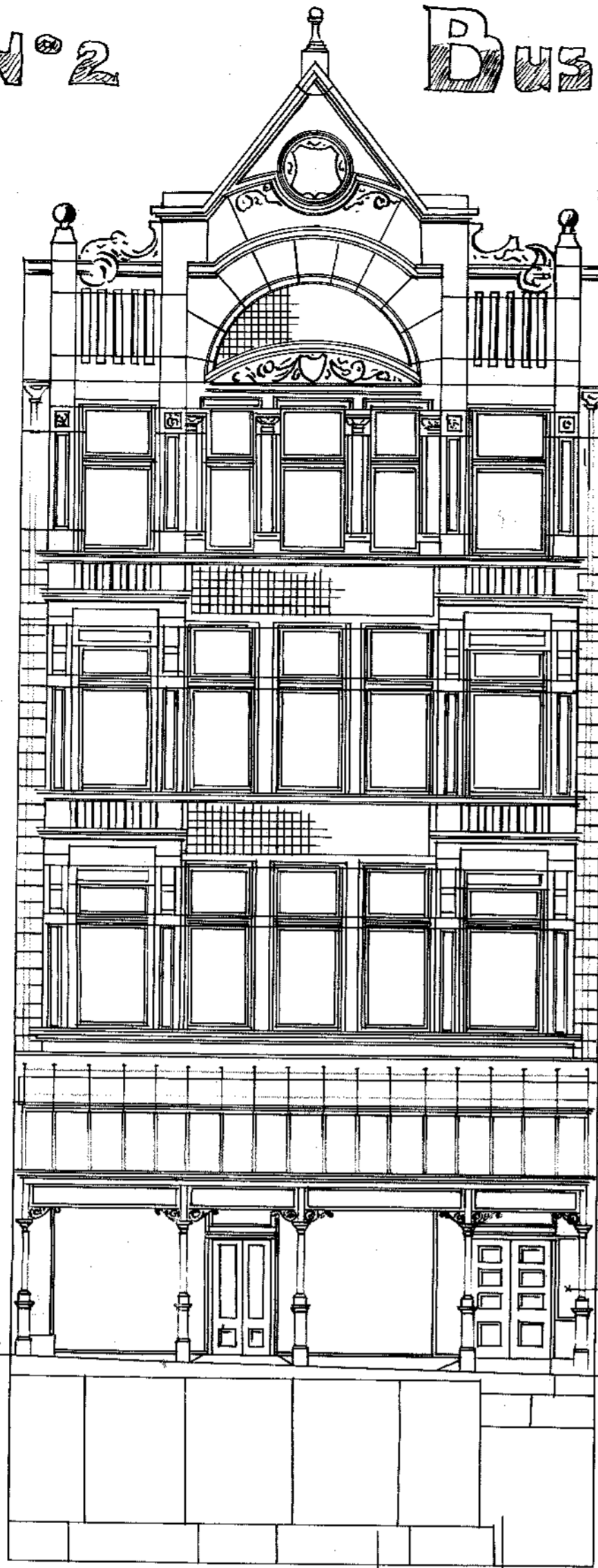
Scale 8 Feet to an inch.



Section A-B

2. 24 gauge gal iron veris covered with woven wire mesh of 1/4 x 1/4 gal. mesh.

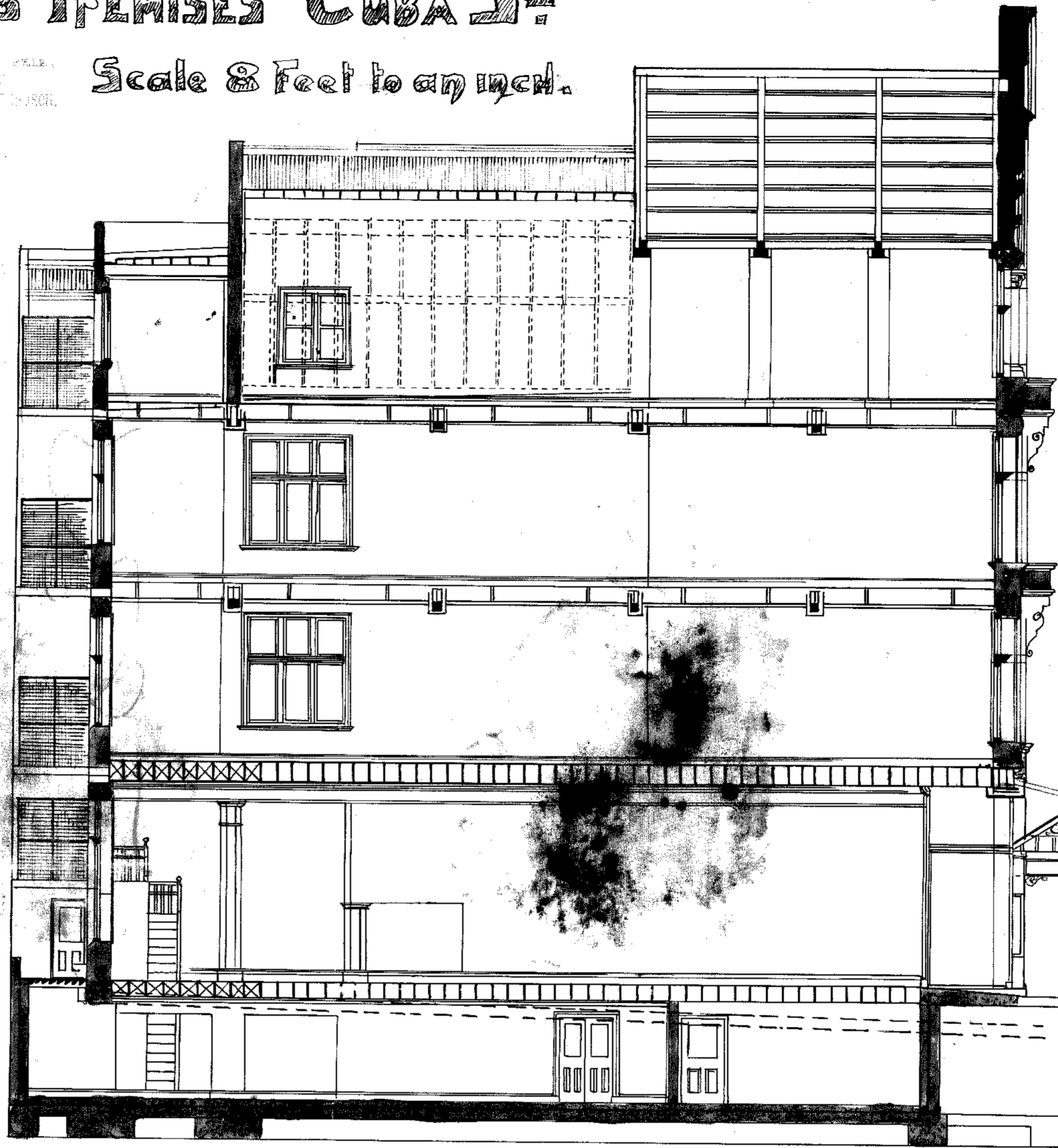
Street



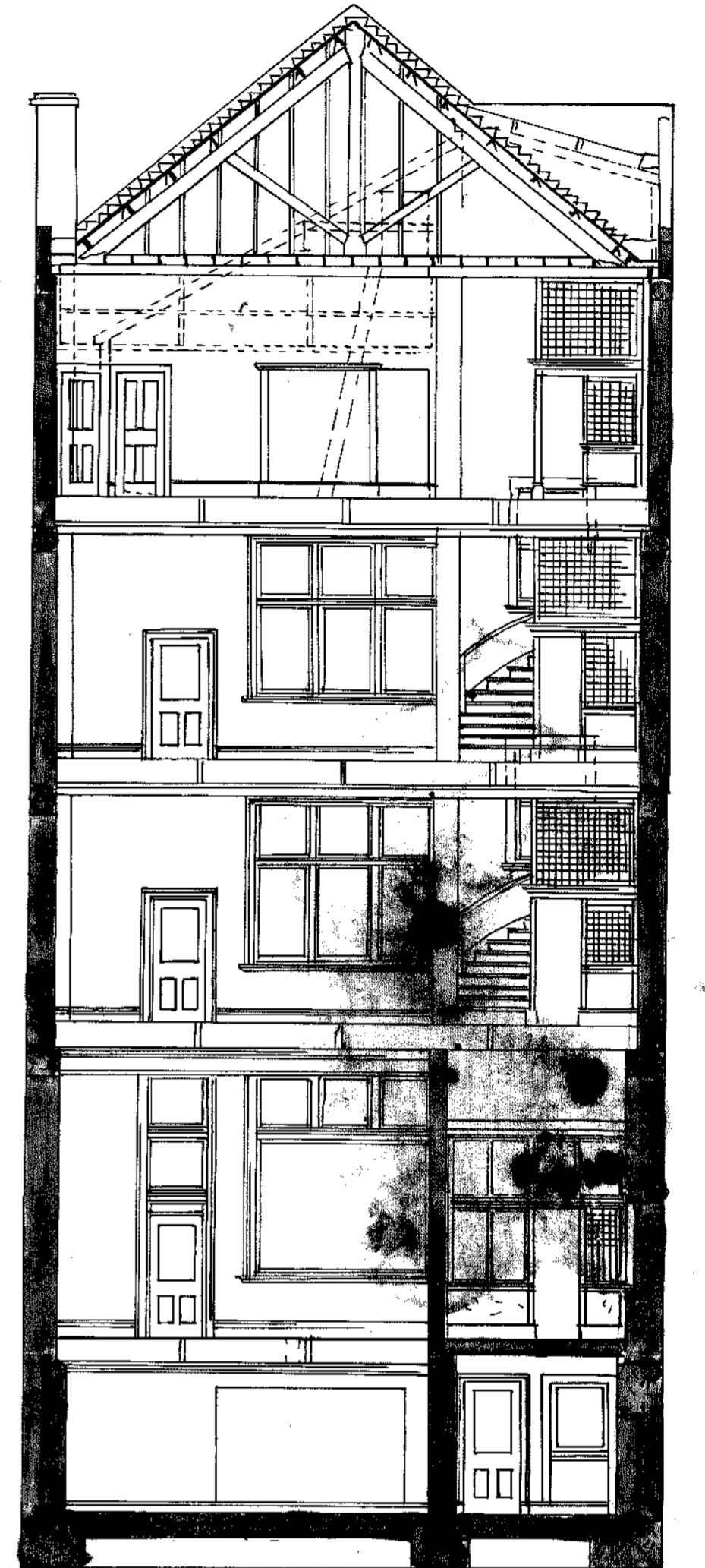
Front Elevation.

Glass case

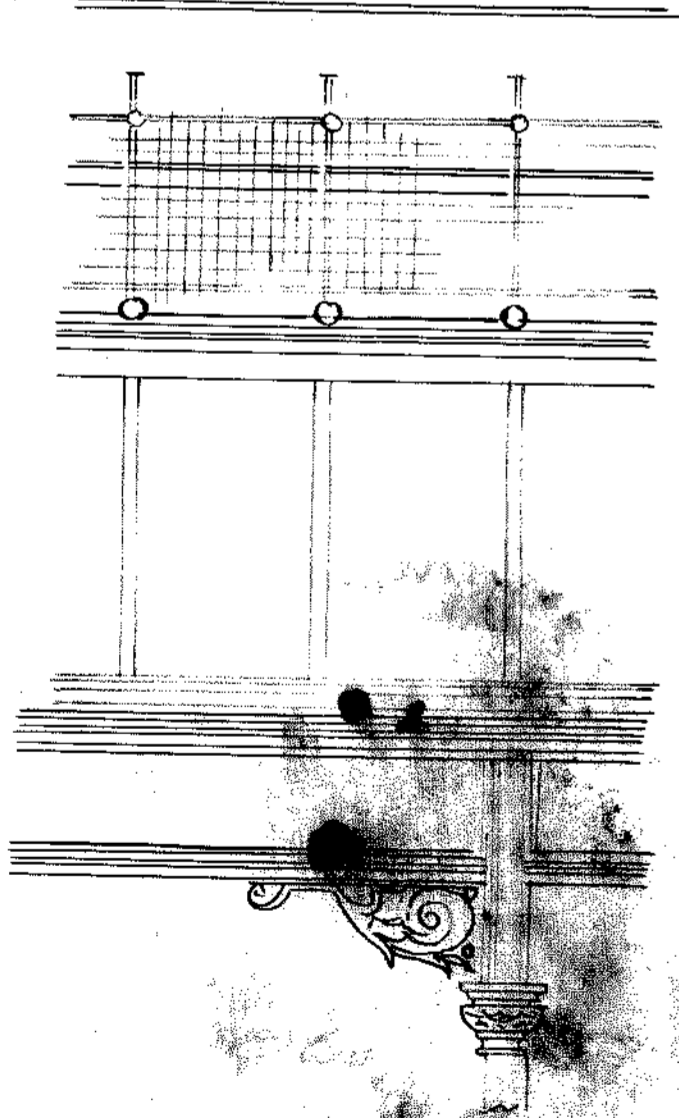
Top



Section C-D



Section E-F

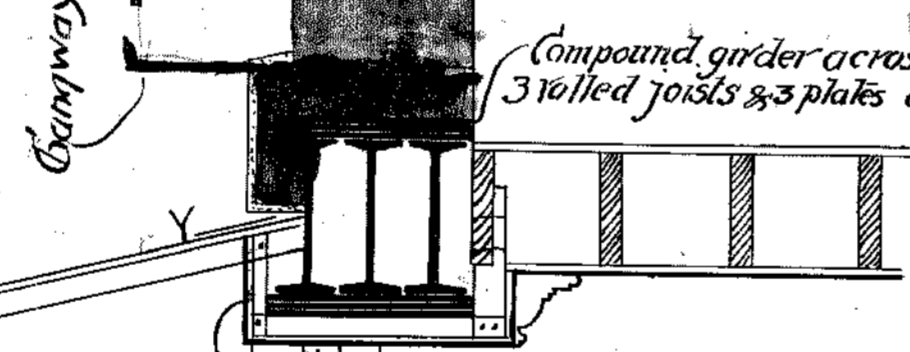


N° 10 Cast Iron Bracket

1/2" SCALE DETAILS VERANDAH



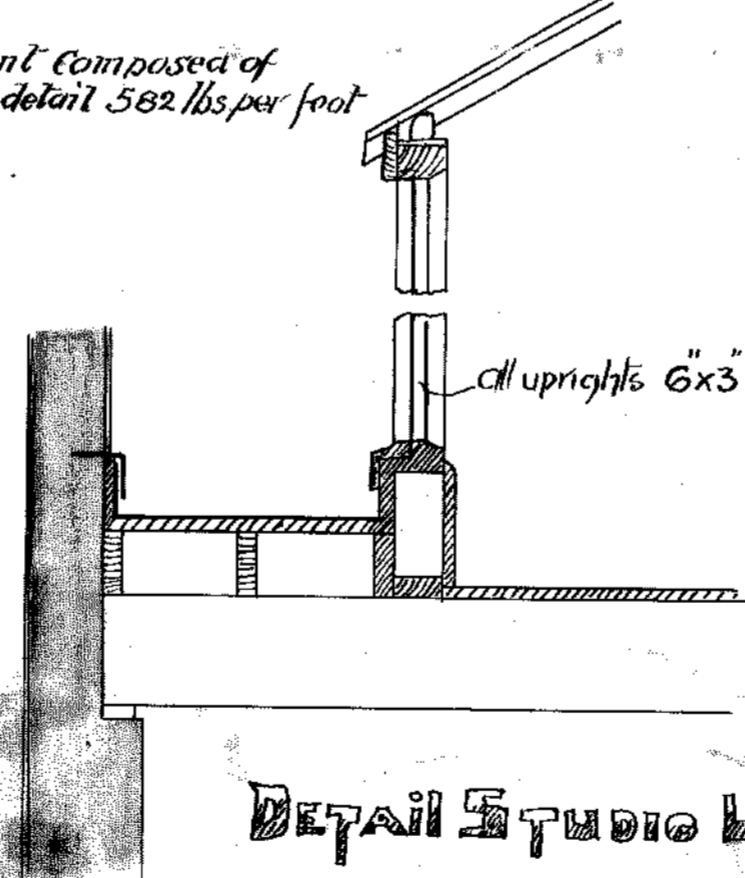
1/2 Detail Piers.



Compound girder across front composed of 3 riveted joists & 3 plates all to detail 582 lbs. per foot

Canopy

Holed to approval for ventilation.



Detail Studio light

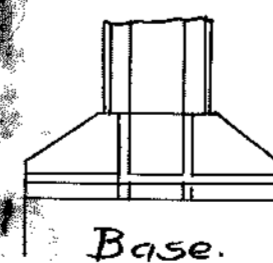
All uprights 6x3 splayed & rebated.

Case on Pier.

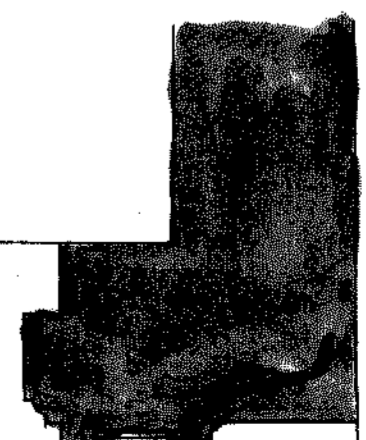
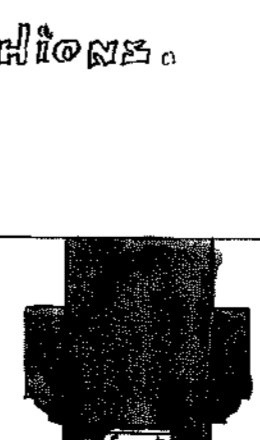
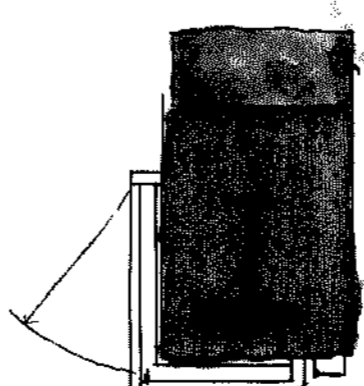


Plan.

N° 1 RSJ 12x6 64 lbs per foot
N° 2 " " 6x5 25 " " "
all bolted together at 18" centres
with 5/8 bolts nuts arcs can be riveted



Base. Detail of Stanchions.



1/2 Detail thru windows.

Approved for 1907
J. G. Madison
26.10.07

1907

J. G. MADISON, ARCHT.
1100 BROADWAY
NEW YORK