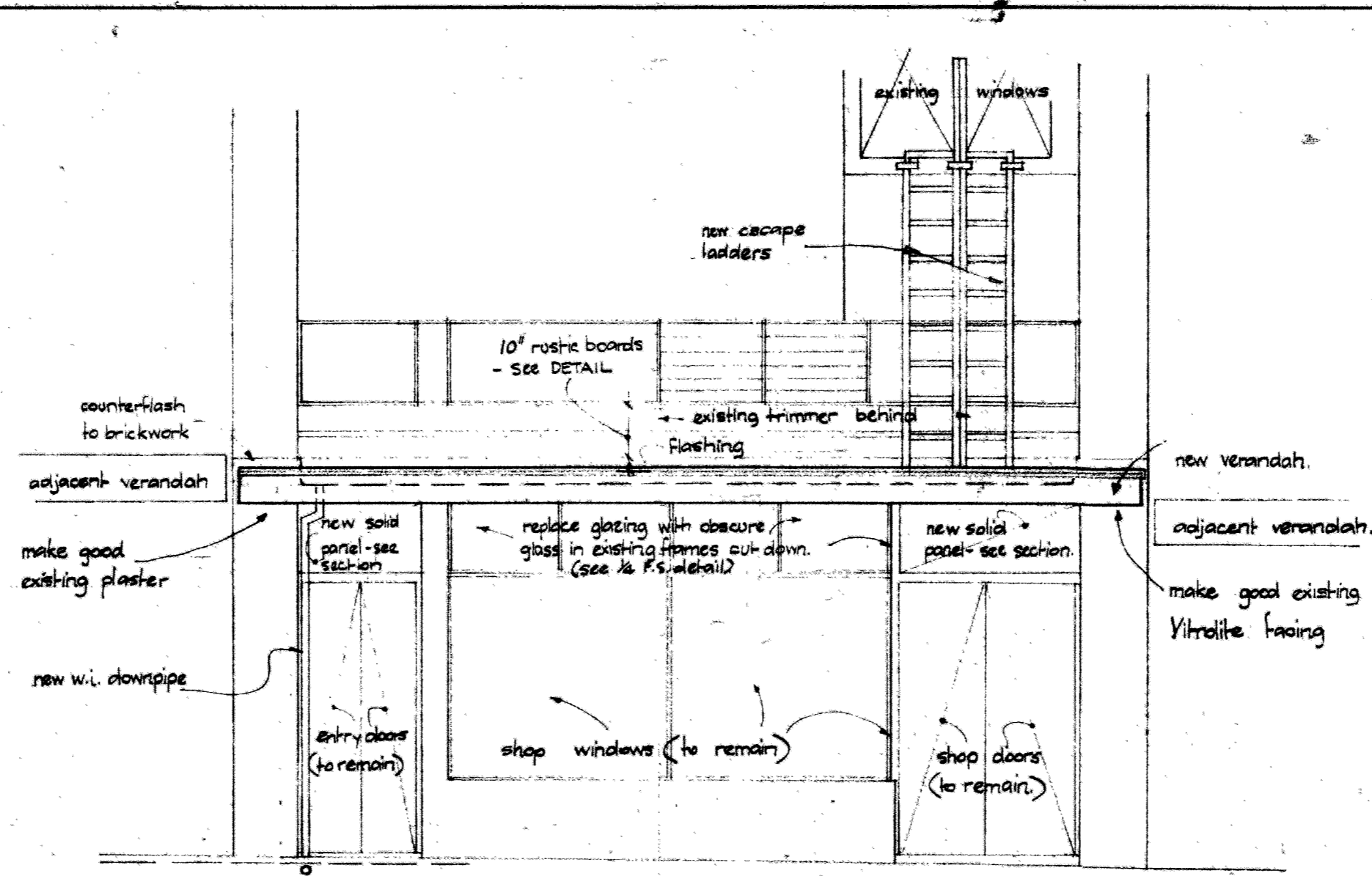
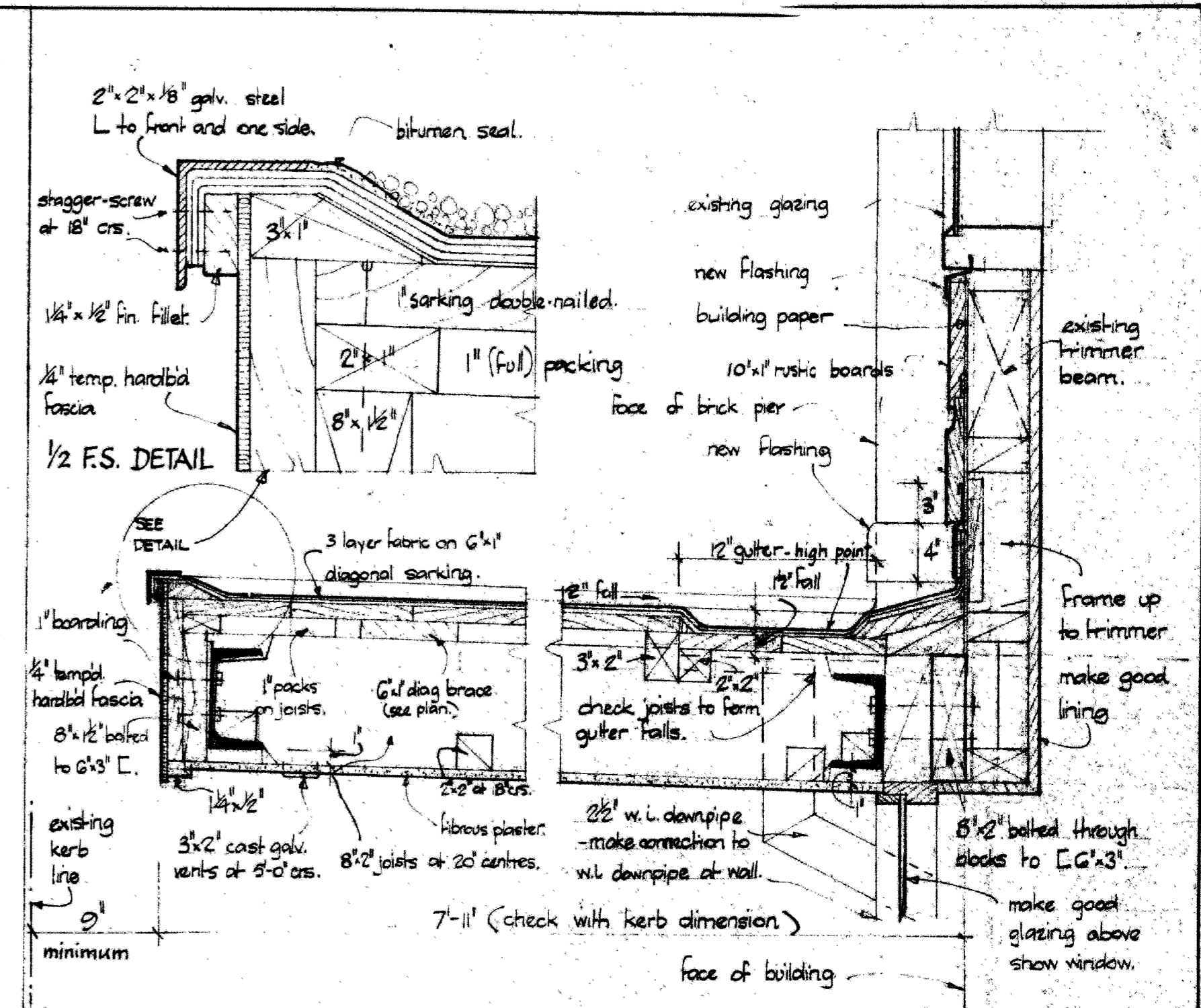


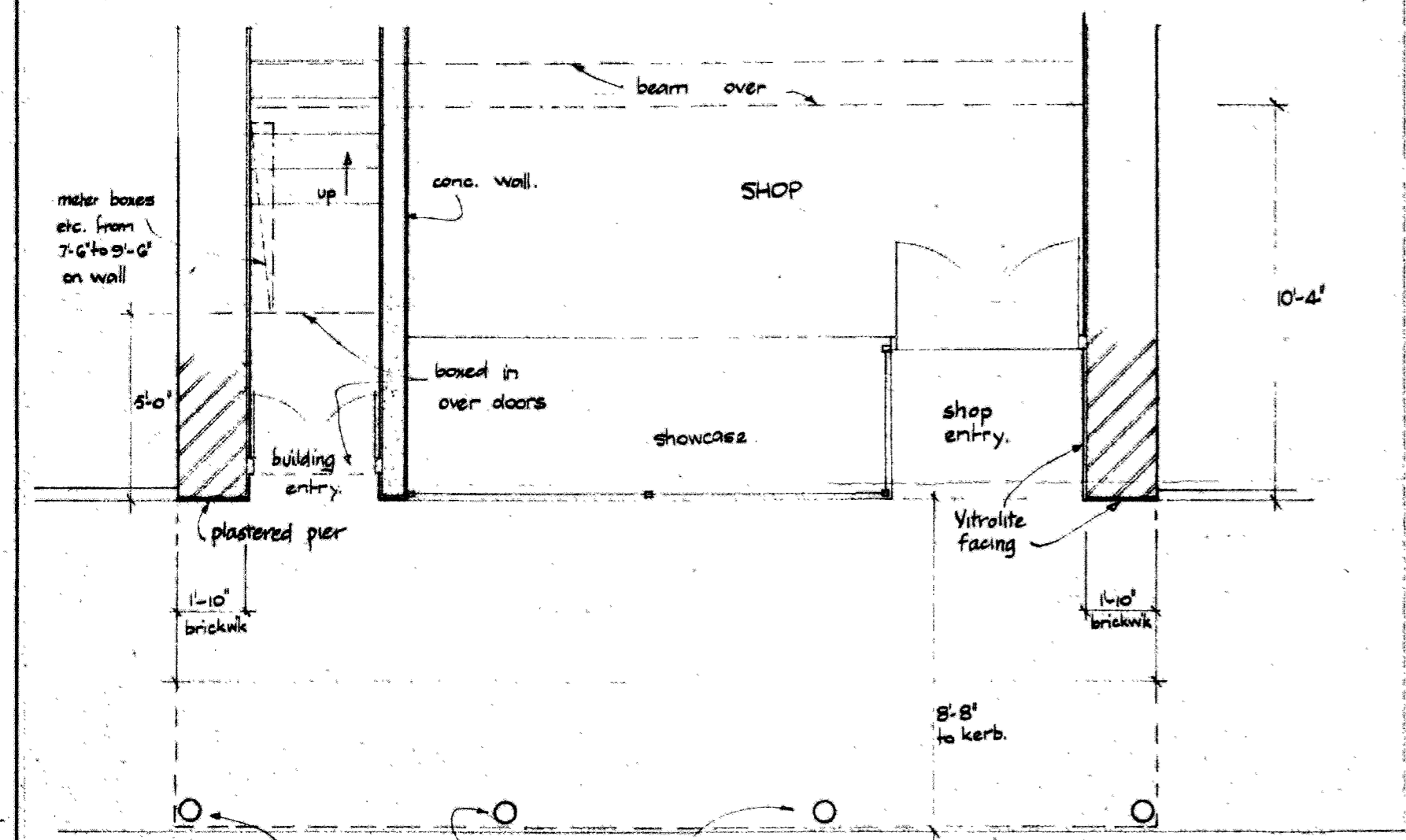
EXISTING STREET ELEVATION (existing verandah omitted for clarity) 1/4" = 1'-0"



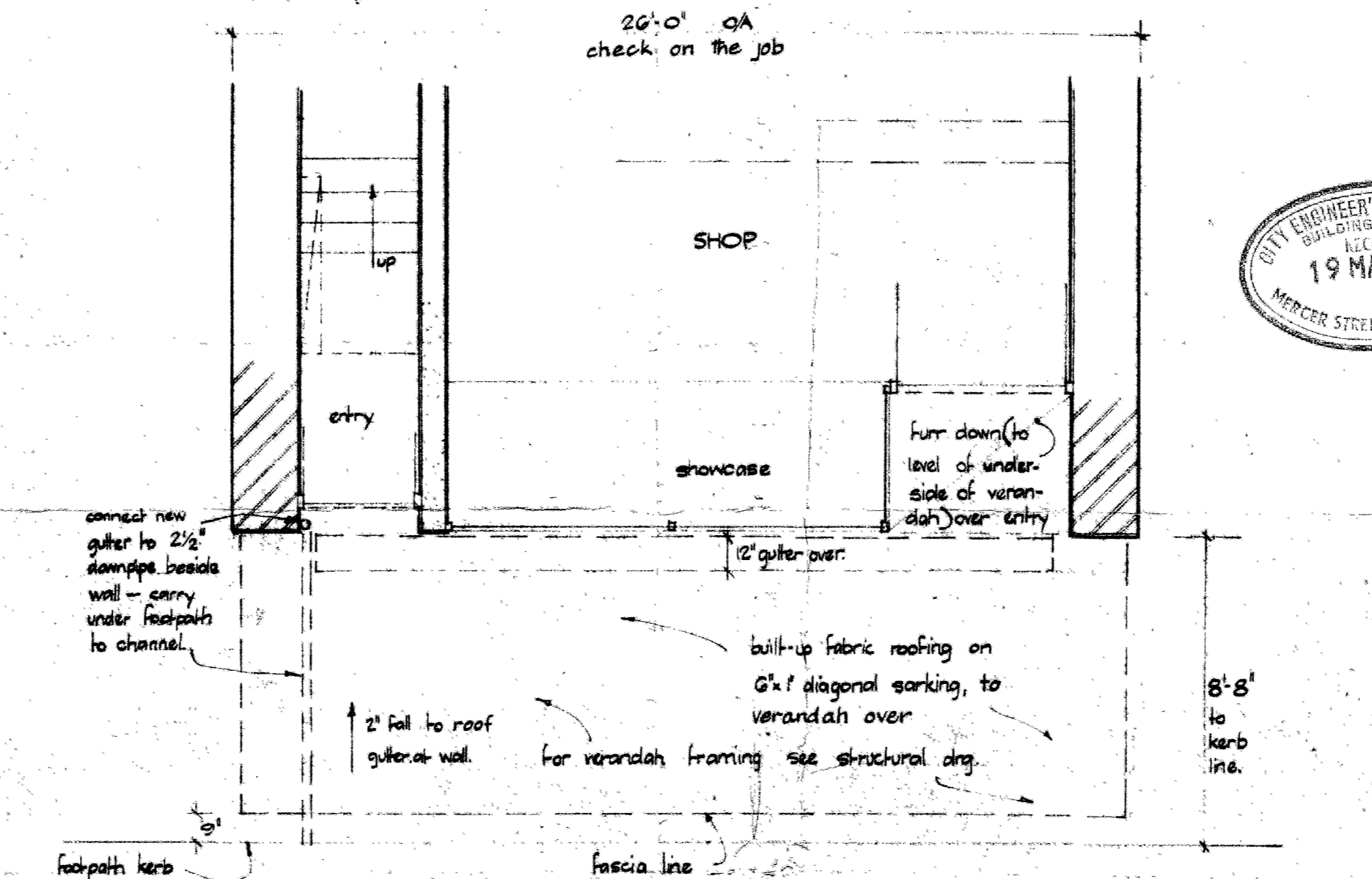
ALTERED STREET ELEVATION 1/4" = 1'-0"



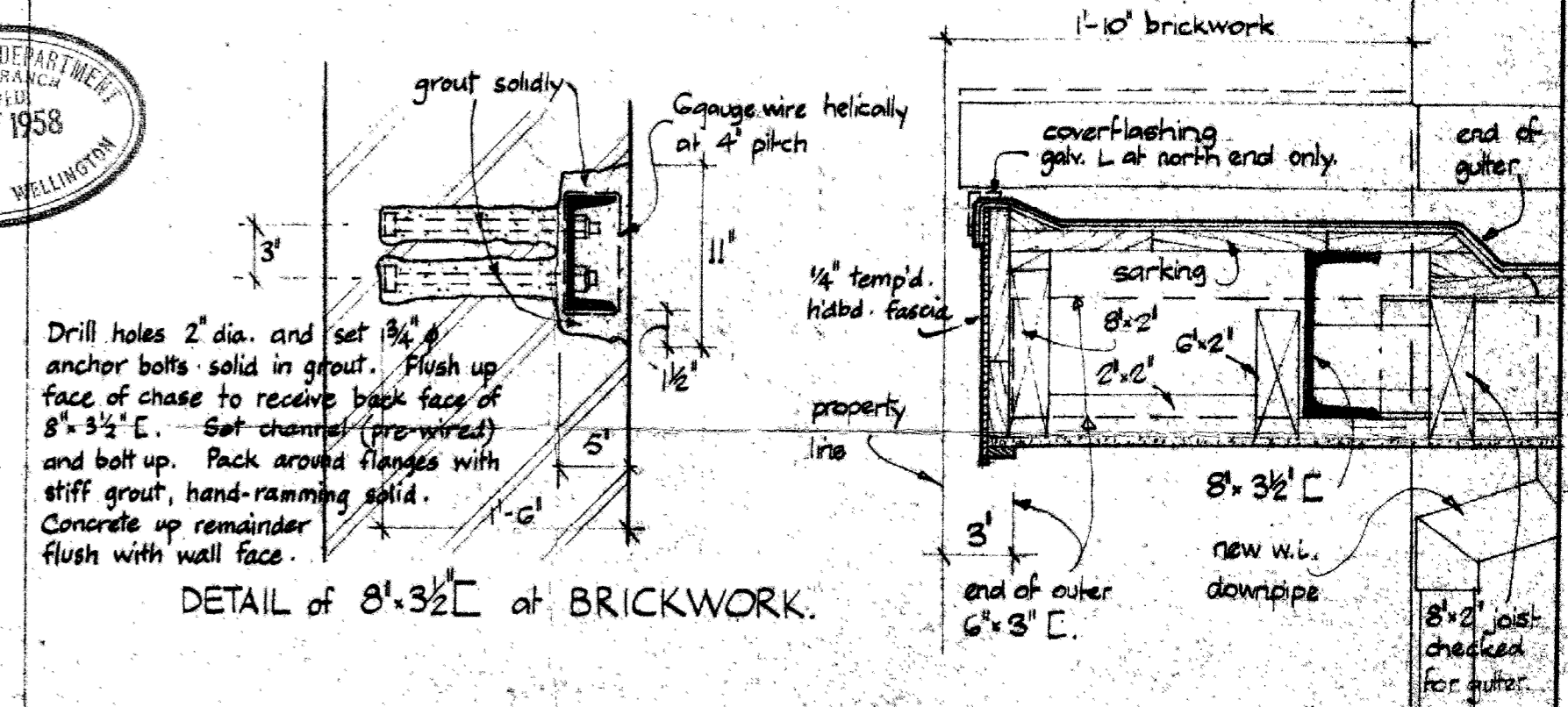
1/8" F.S. SECTION THRO' VERANDAH (at windows)



EXISTING PLAN OF FRONT OF BUILDING 1/4" = 1'-0"



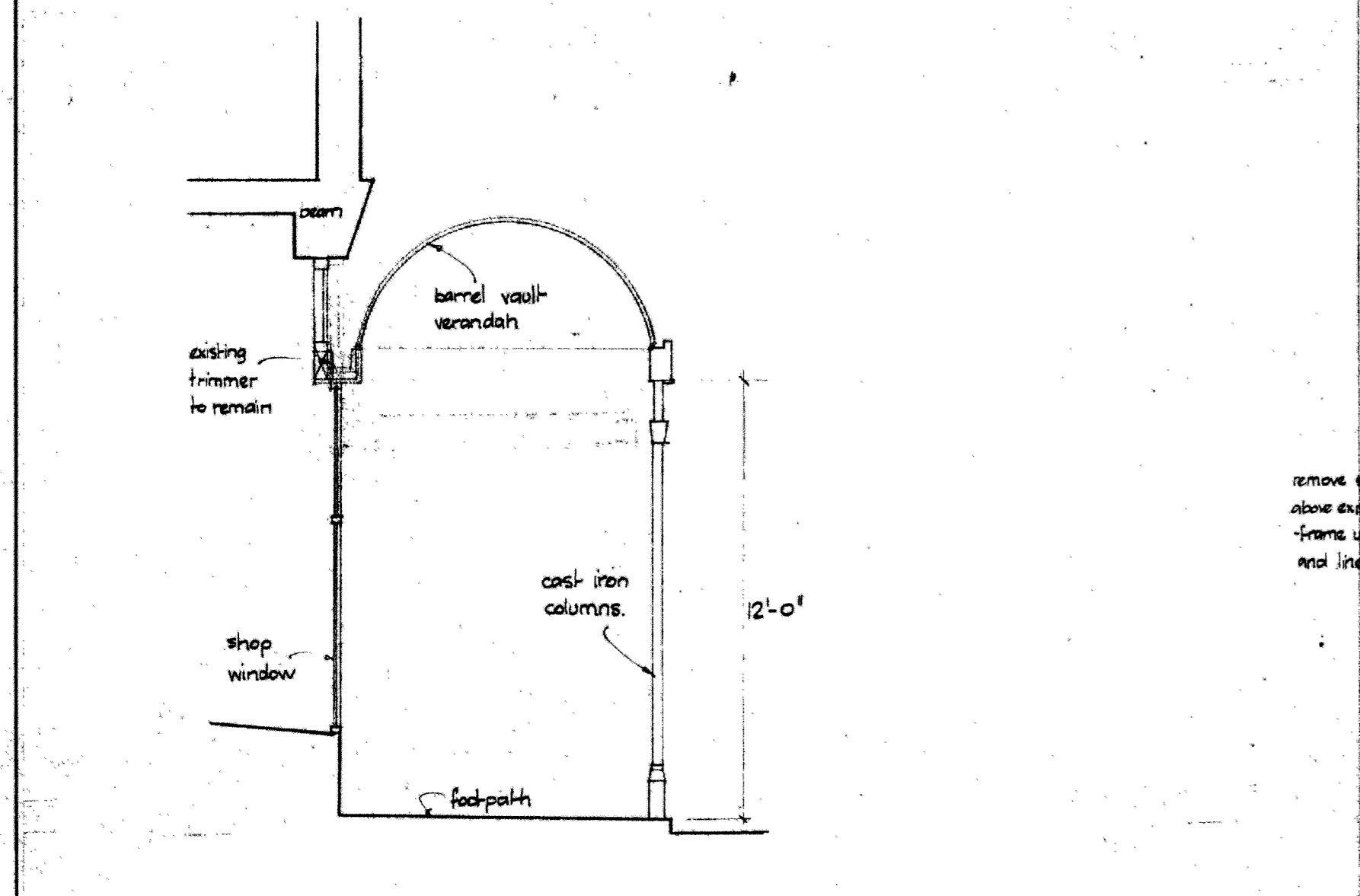
PLAN OF FRONT OF BUILDING SHOWING NEW VERANDAH 1/4" = 1'-0"



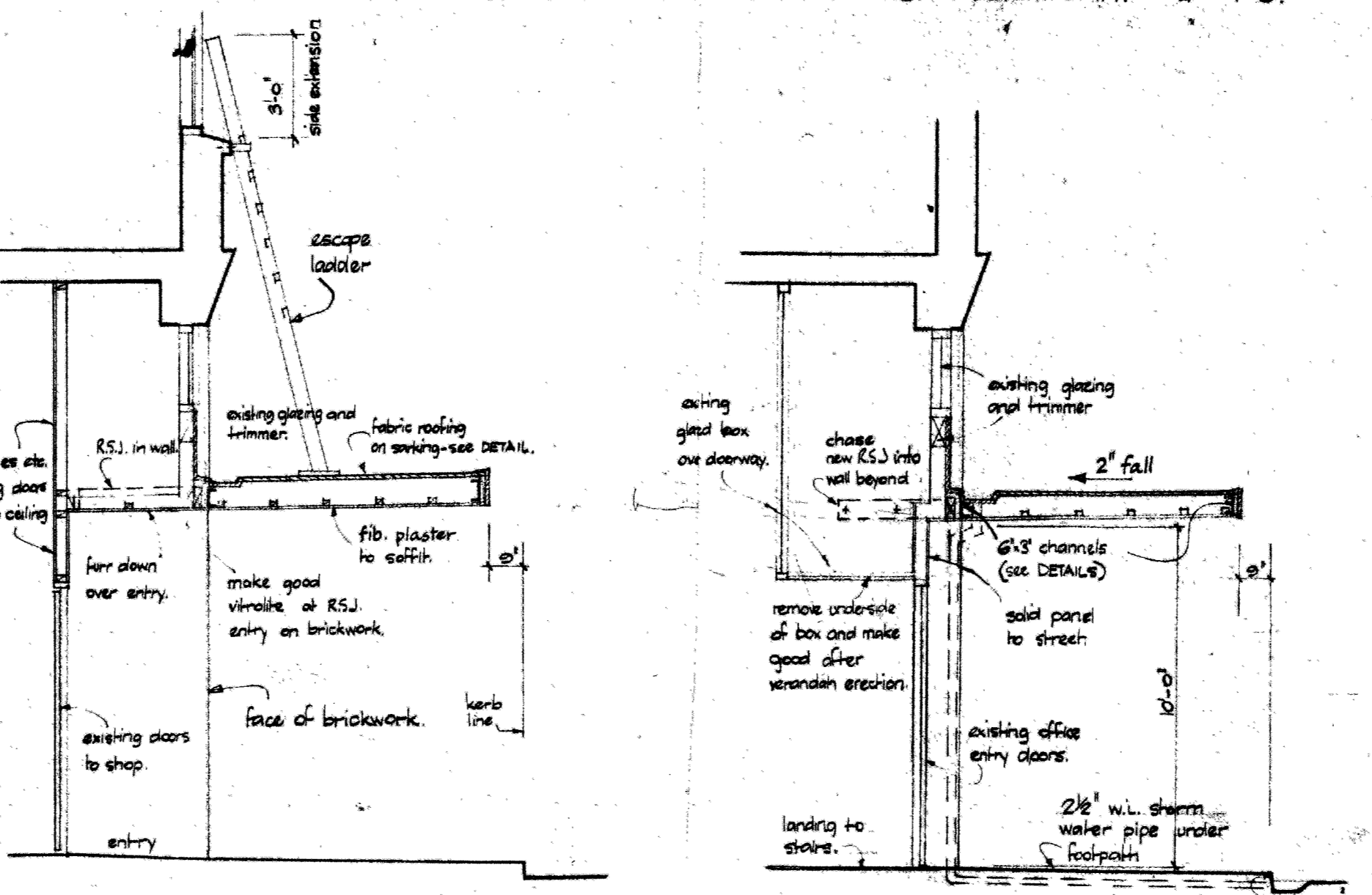
DETAIL OF 8" x 3 1/2" C AT BRICKWORK



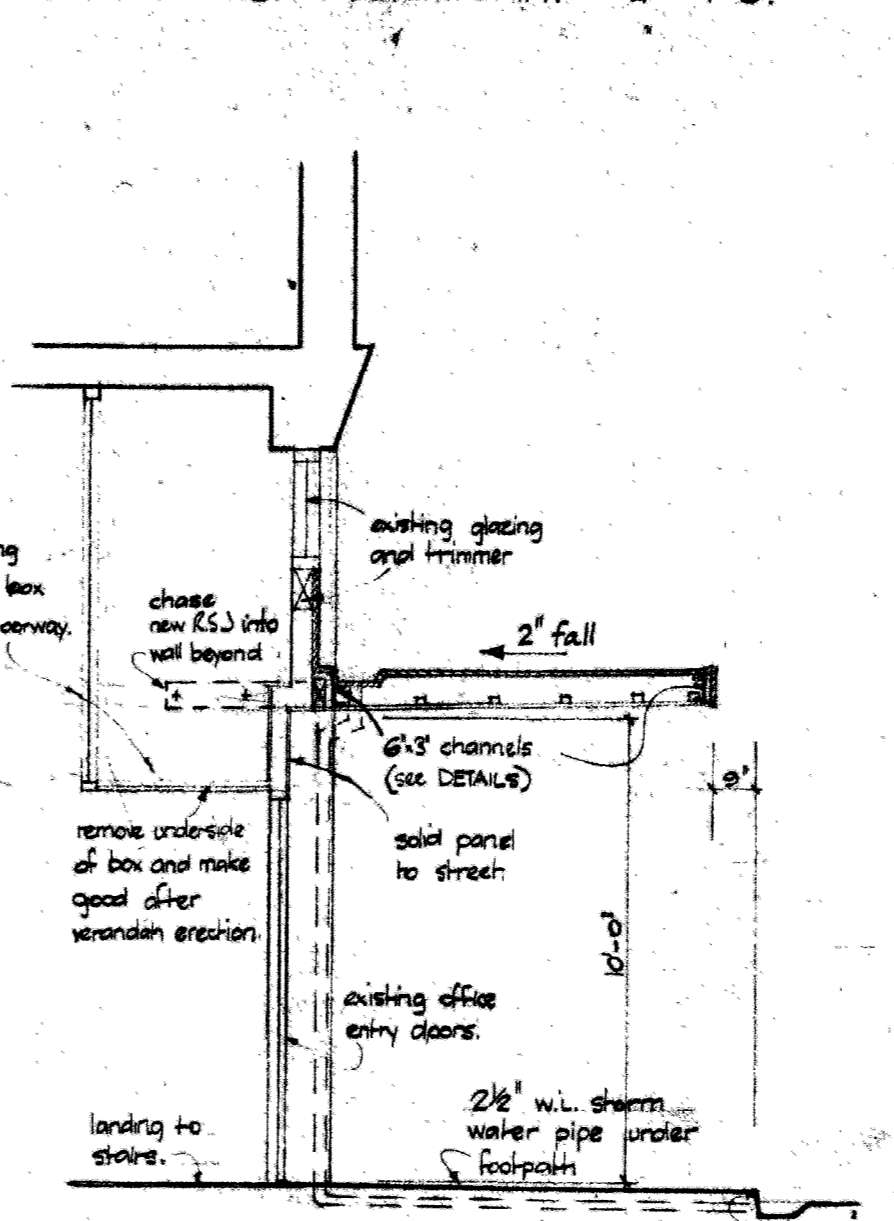
1/8" F.S. SECTION AT SOUTH END VERANDAH, SHOWING GUTTER



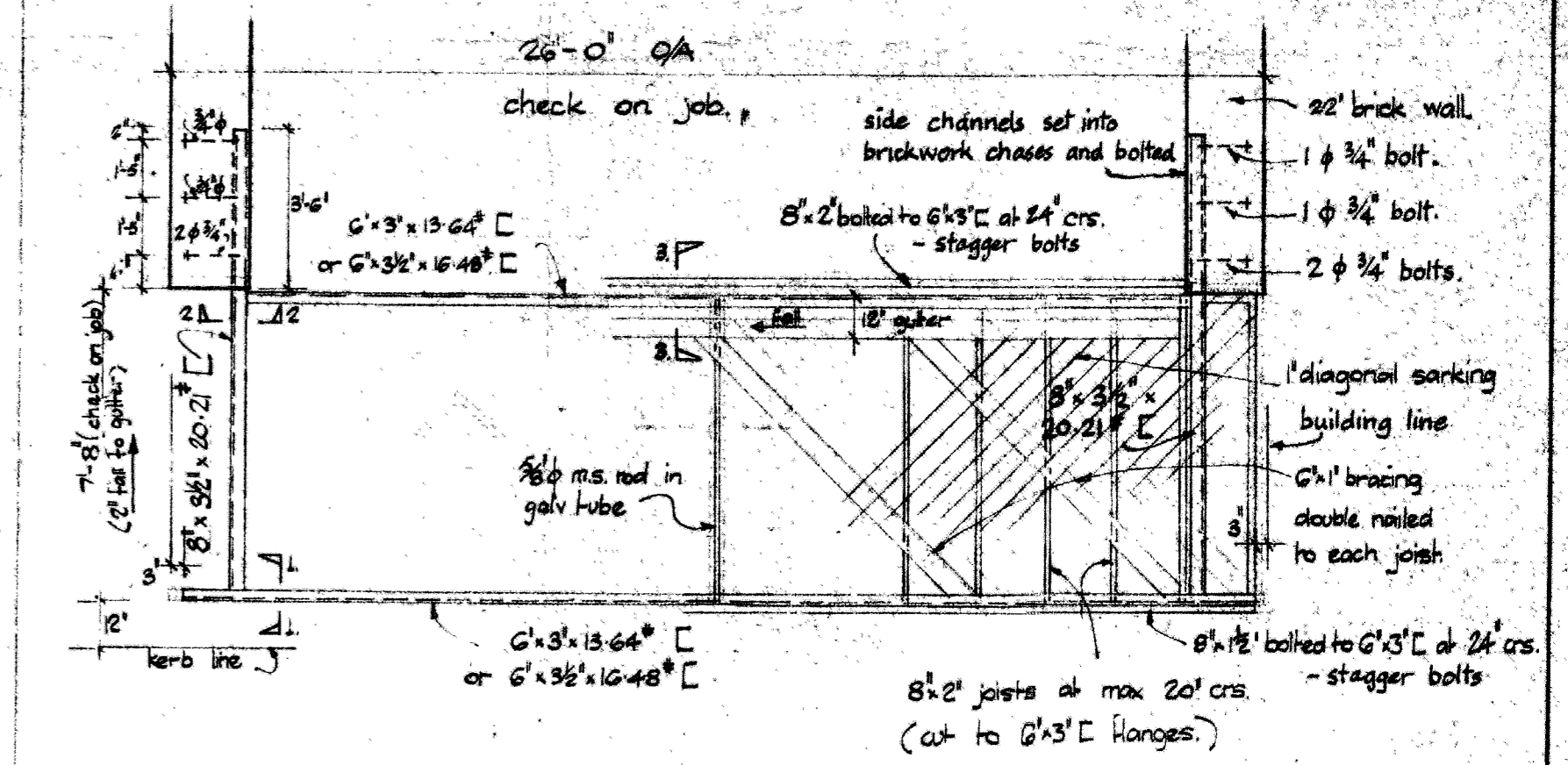
SECTION THRO' EXISTING VERANDAH (to be demolished) 1/4" = 1'-0"



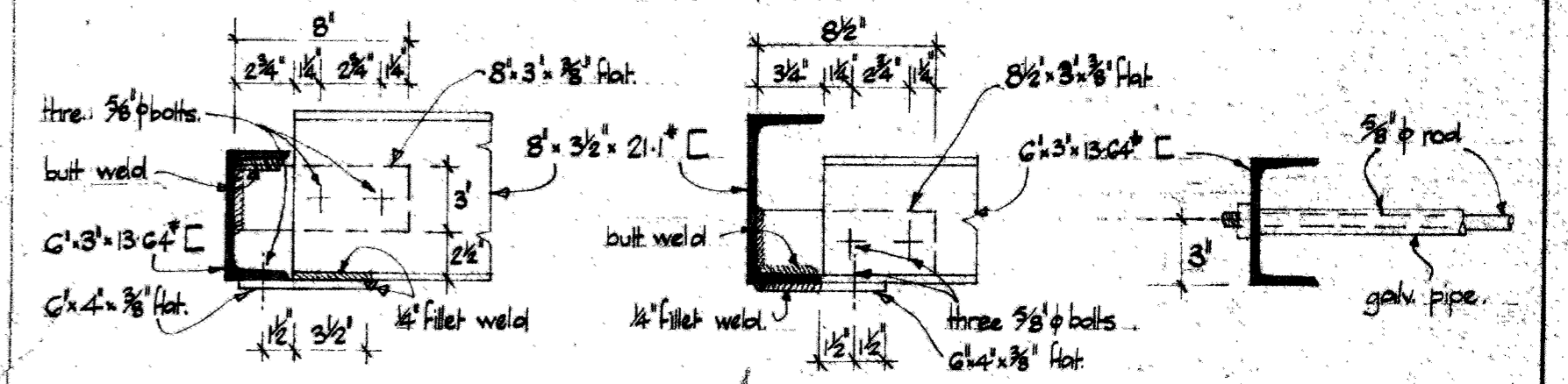
SECTION THRO' NEW VERANDAH AT SHOP ENTRY 1/4" = 1'-0"



SECTION THRO' NEW VERANDAH AT OFFICES ENTRY 1/4" = 1'-0"



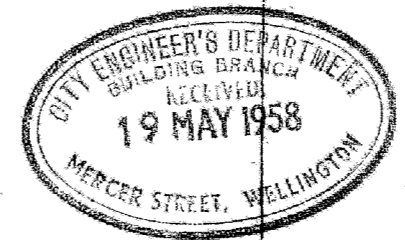
PLAN OF VERANDAH FRAMING 1/4" = 1'-0"

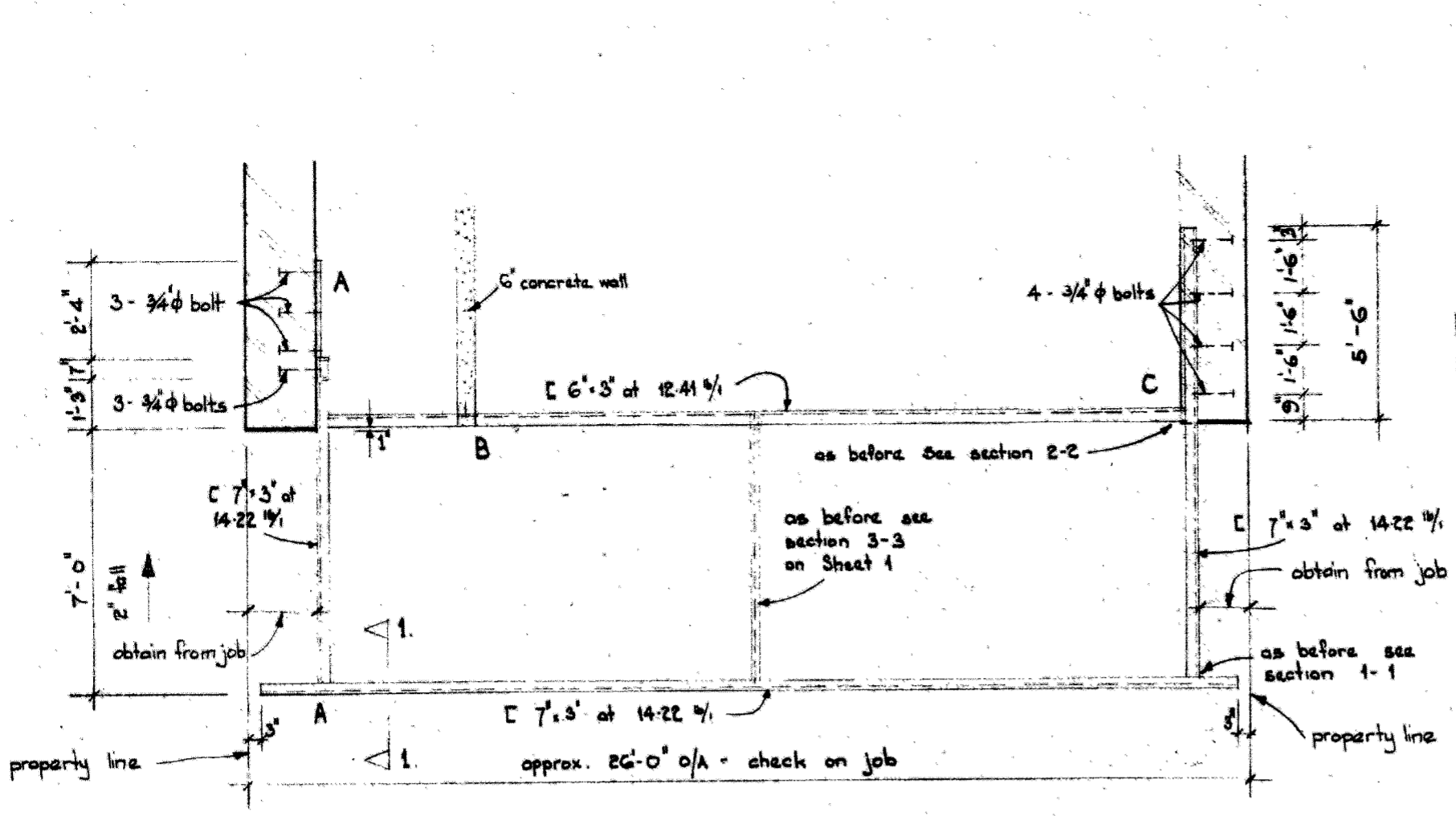


SECTION 1-1 SECTION 2-2 SECTION 3-3

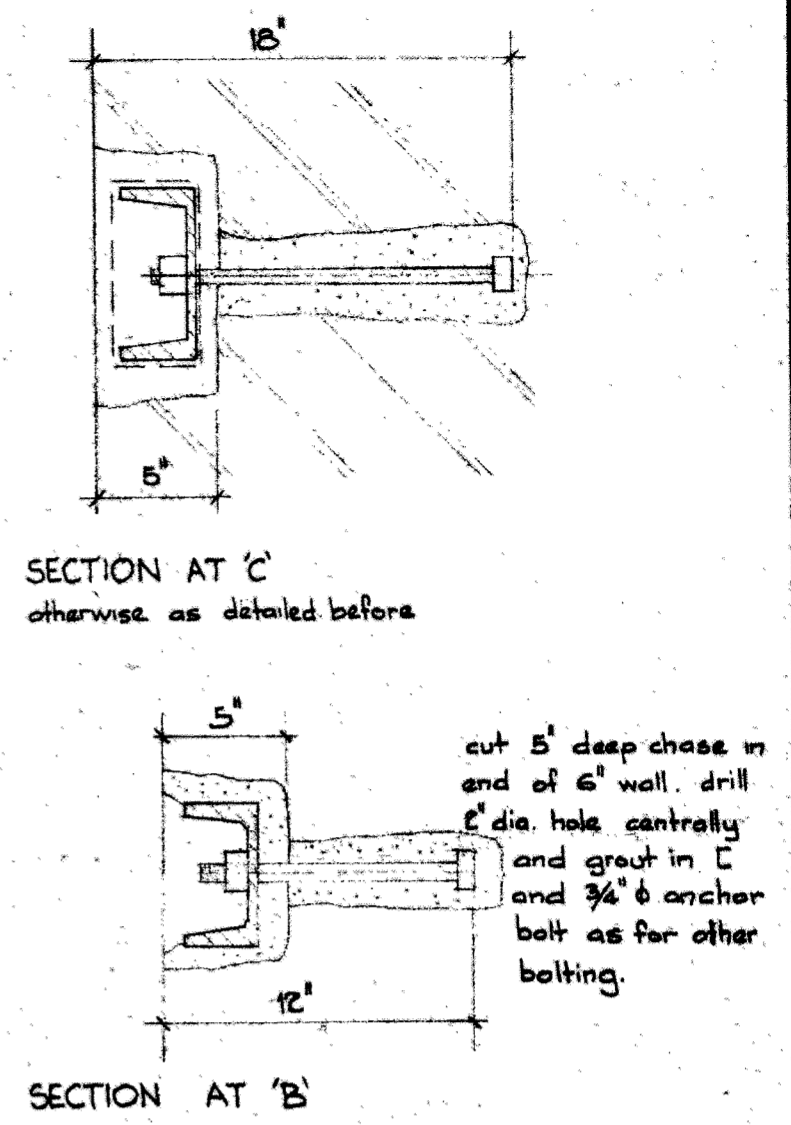
NEW VERANDAH at 134 Cuba Street,
for the S.M. YOUNG'S ESTATE.

S. WILLIAM TOOMATH,
M. Arch. A.N.Z.I.A.
REGISTERED ARCHITECT,
240 WILLIS STREET,
WELLINGTON, PH. 82267
February, 1958
Work No. 71/L

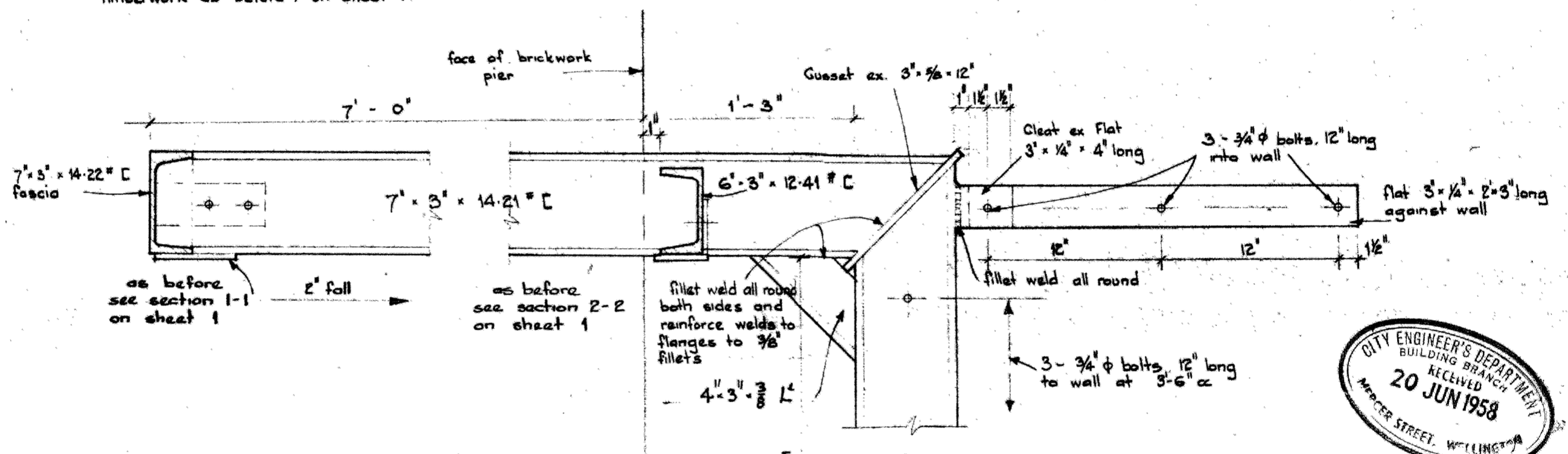




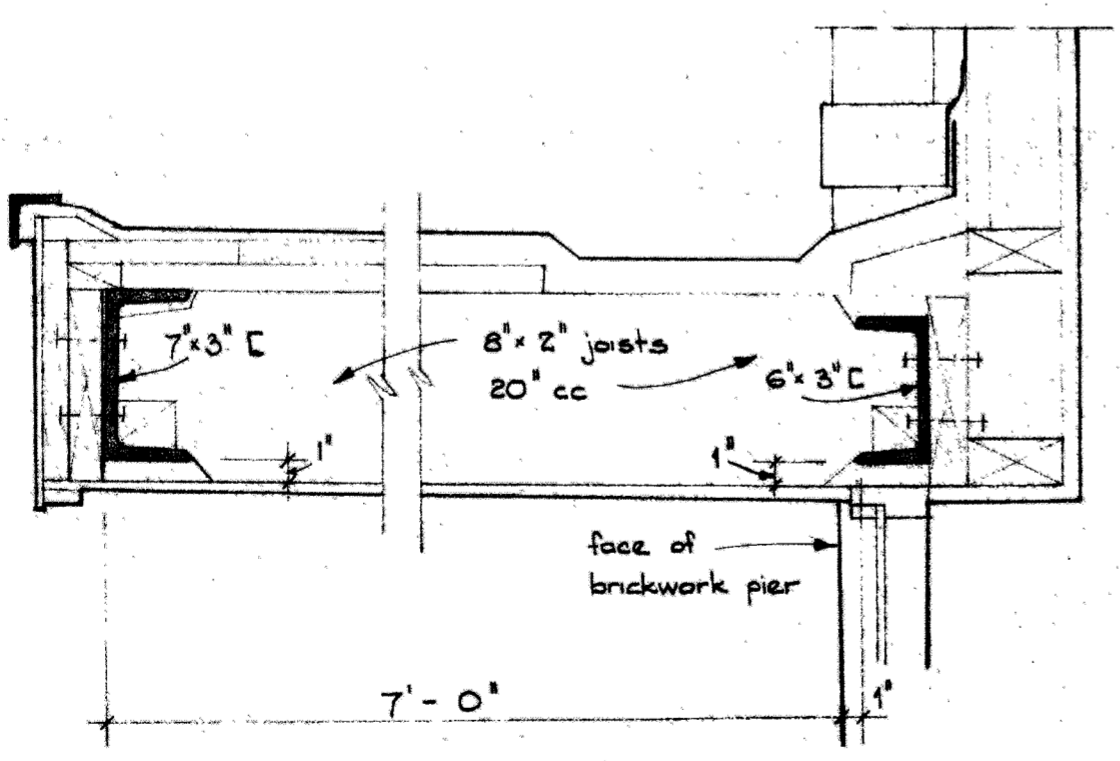
REVISED PLAN OF CANOPY STEELWORK
Timberwork as before, on Sheet 1.



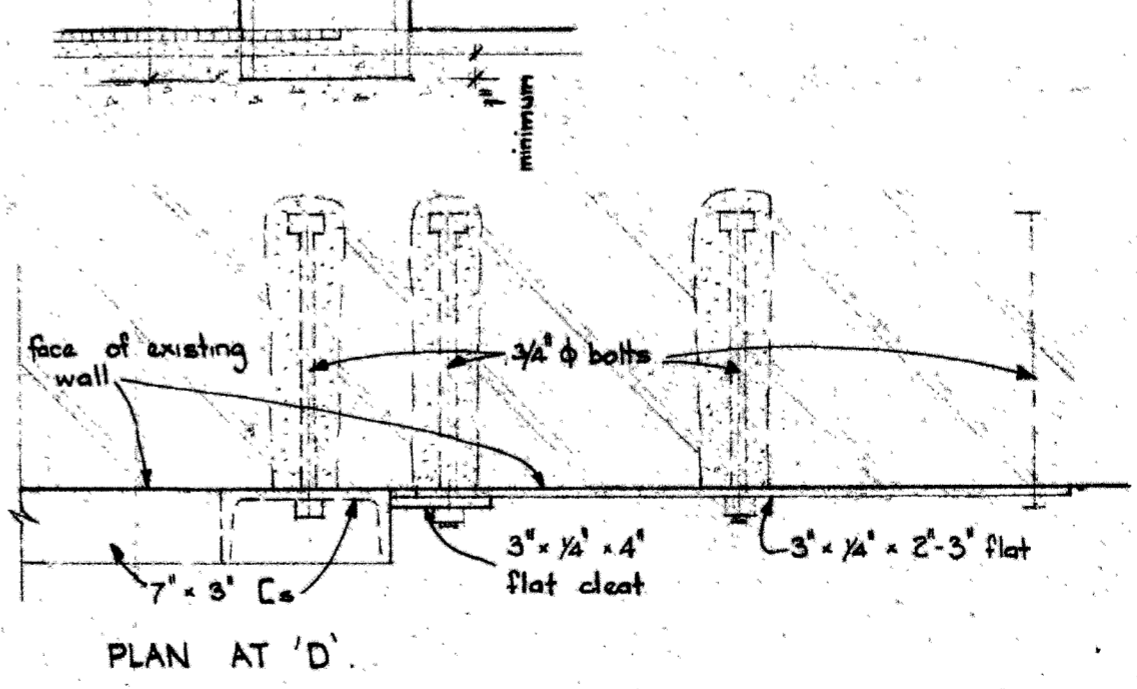
AMENDED PLAN
APPROVED BY
DATE



1/8 F.S. ELEVATION & DETAIL FRAME A-A.



REVISED DIMENSIONS & STEELWORK SECTION
-remainder as before on
1/8 F.S. SECTION THRO' VERANDAH
on Sheet 1.



REVISED STEELWORK DETAILS

NEW VERANDAH at 134 Cuba Street for the S.M. YOUNG'S ESTATE	S. WILLIAM TOOMATH M. Arch. A.N.Z.I.A. REGISTERED ARCHITECT 240 WILLIS STREET WELLINGTON ph. 52-987	June 1958
	SCALES:	2 Work No. 71/2