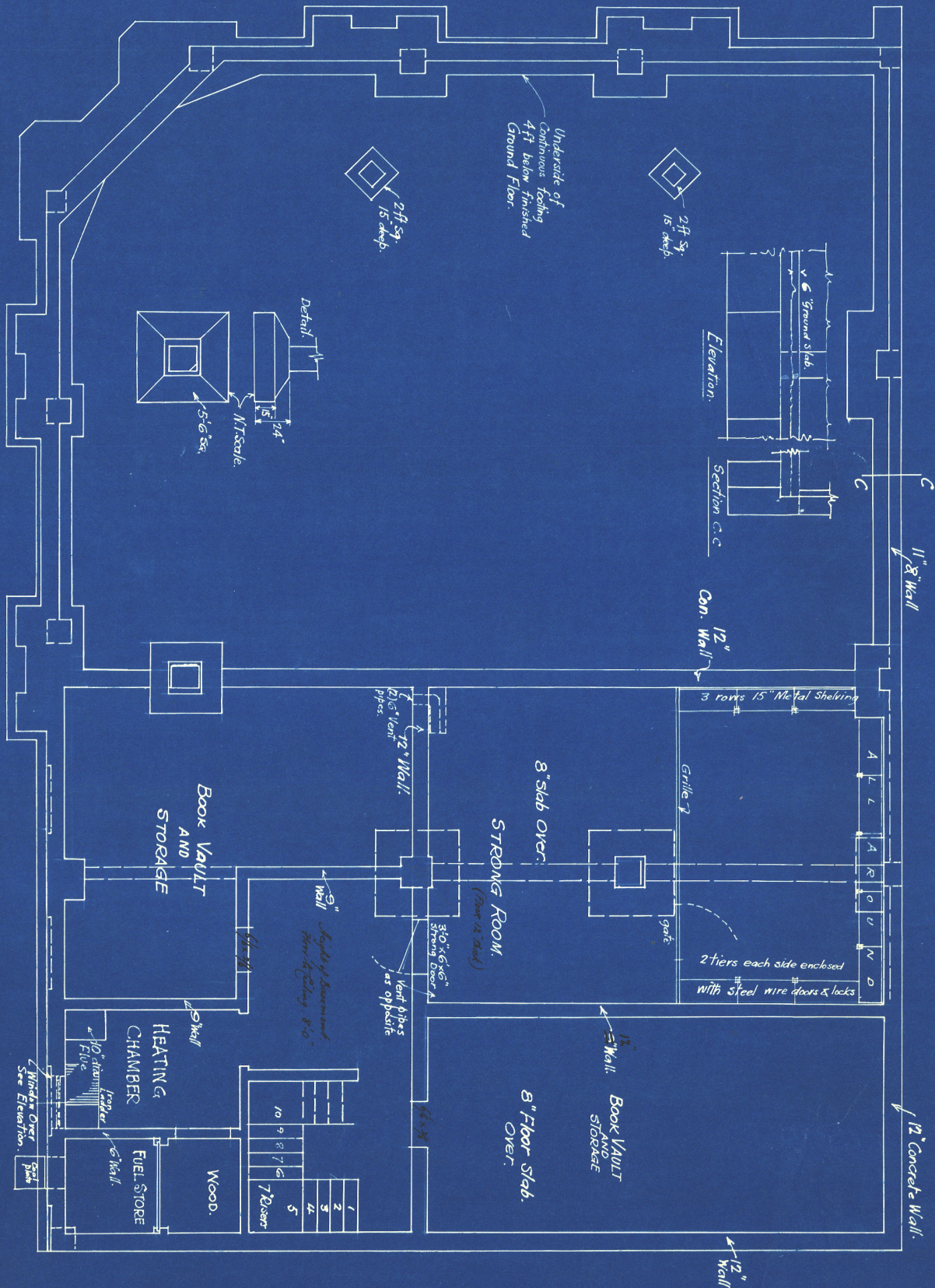


FOUNDATION PLAN.



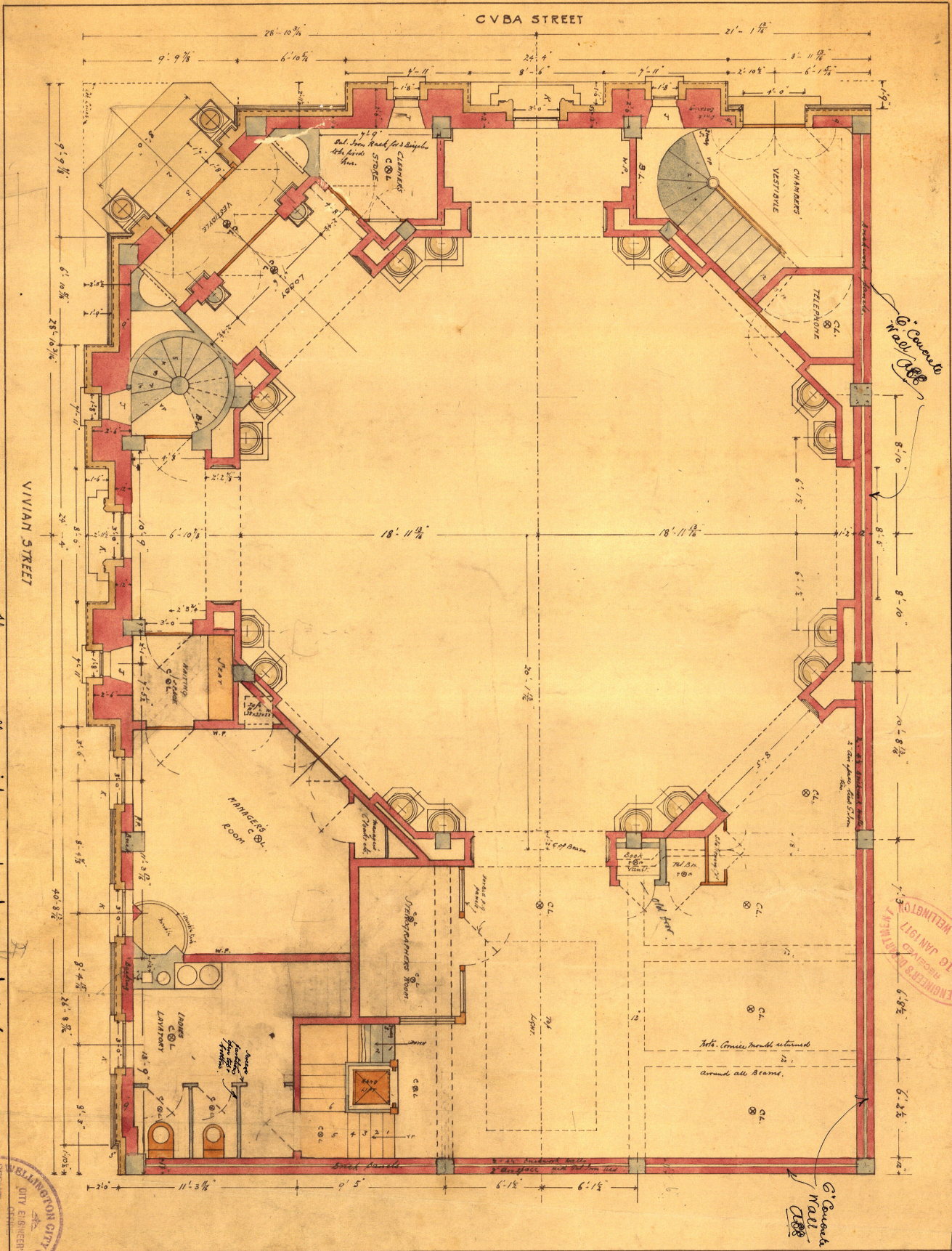
Paul Jones ARCHITECT
HARCOURT'S BUILDINGS.
WELLINGTON.

Scale: 4ft = 1 inch
DWG NO 506/1
Nov 14th 1916.

The N. B. N. Z. Co
Je Oro.

KAHN SYSTEM OF REINFORCEMENT.
THE TRUSS CONCRETE STEEL CO. LTD
EQUITABLE BUILDING, LAMBTON QUAY.
WELLINGTON.
Arthur E. Brown ENGINEER.

CITY ENGINEER'S COPY.



The object of the reinforcement and concrete work to be carried out to the satisfaction of the City Engineer shall be furnished as soon as possible.

DRAWING NO 506/2
 Scale 1/4" = 1 foot
 DATE. Sep. 19. 1915.

THE N.B.N.Z. LTD TE ARO

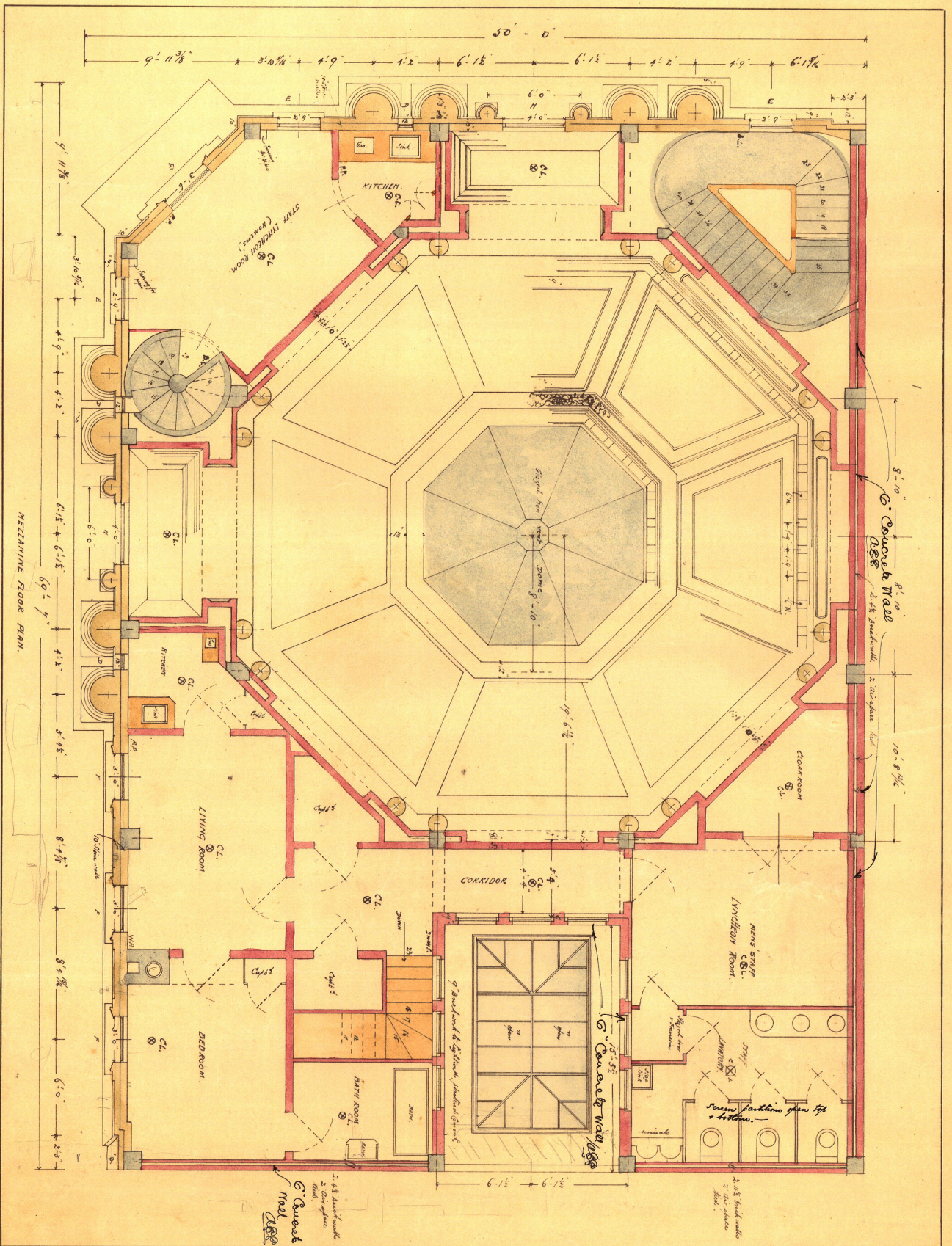
Rand. Jones & P.L.S. ARCHT.
 HARGREY'S BUILDINGS
 WELLINGTON

WELLINGTON CITY ENGINEER
 RECEIVED
 1915
 17
 17

RECEIVED
 1917
 17

RECEIVED
 16 JAN 1917
 TOWN HALL, WELLINGTON

James Underg's
 10"



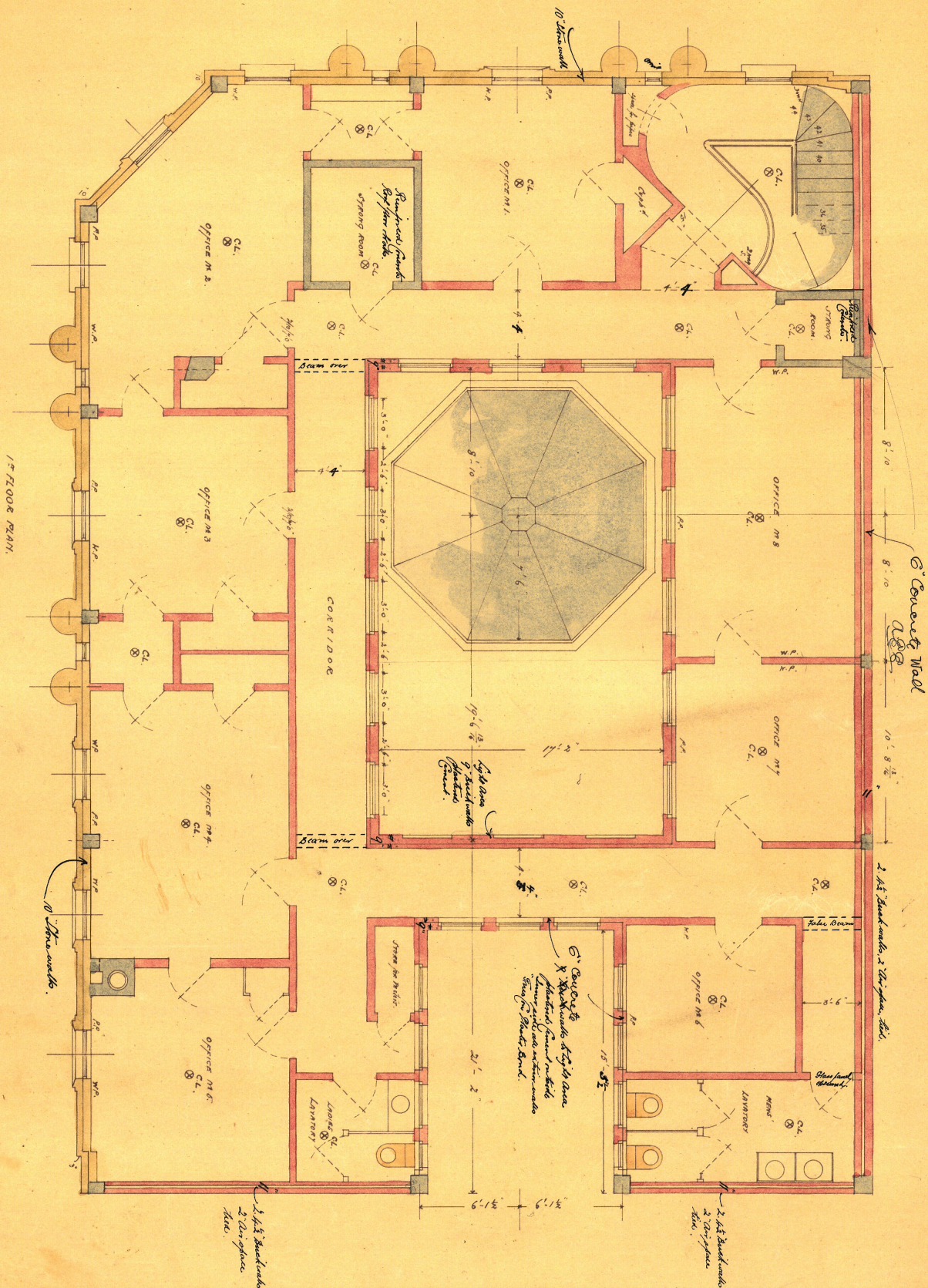
MEZZANINE FLOOR PLAN.

DRAWING NO 506/3
 Scale 1/4" = 1 foot
 DATE SEP. 14. 1915.

THE N.B.N.Z. LTD TE ARO

Claude Jones & Co. R.P.S.A.
 ARCHITECT
 HARGREAVES BUILDINGS
 WELLINGTON, N.Z.

CITY ENGINEER'S DEPARTMENT
 RECEIVED
 16 JAN 1917



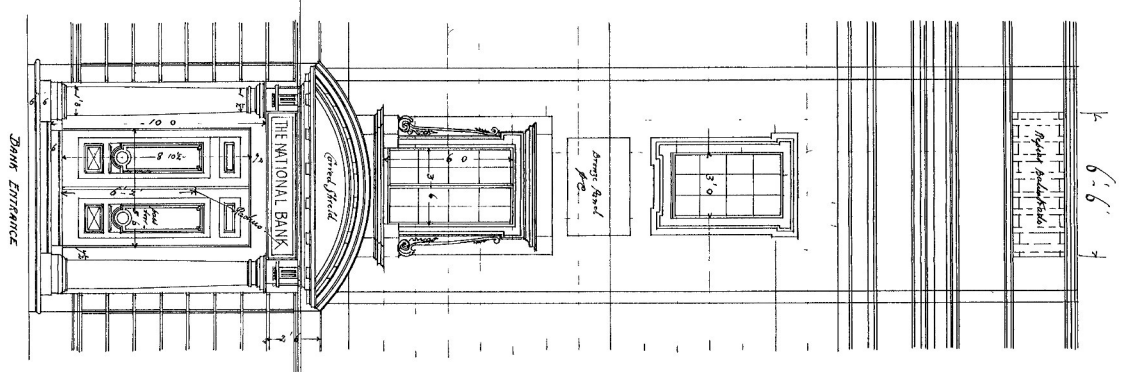
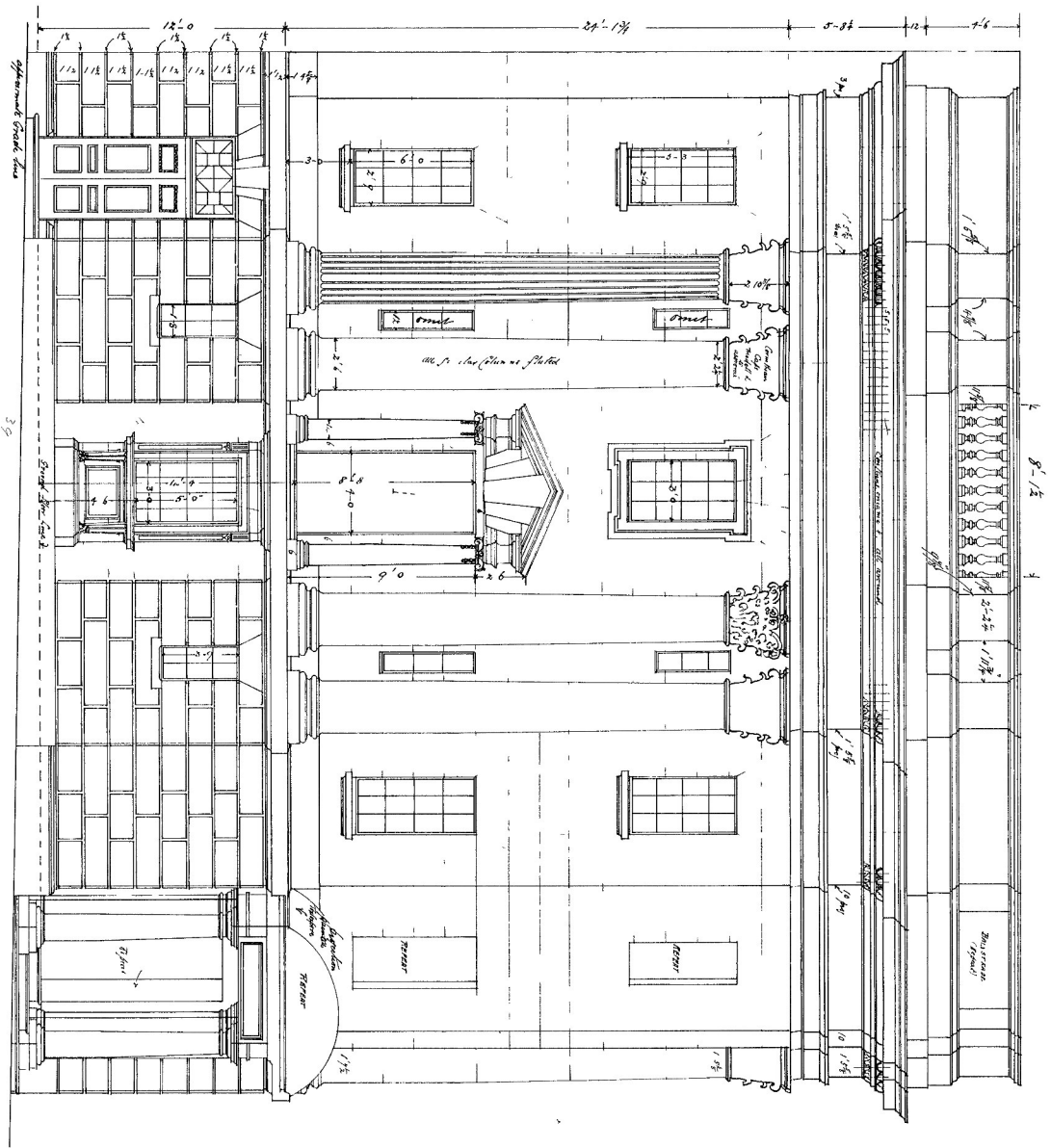
DRAWING NO 306/4
 Scale $\frac{1}{4}'' = 1 \text{ foot}$
 DATE. SEP. 14. 1915.

THE N.B.N.Z. LTD TE ARO

Randall Jones L.R.P.S.A.
 ARCHITECT
 HARGREYTS BUILDINGS
 WELLINGTON, N.Z.

ENGINEER'S DEPARTMENT RECEIVED
 16 JAN 1917
 TOWN HALL WELLINGTON

CIVIL STREET ELEVATION

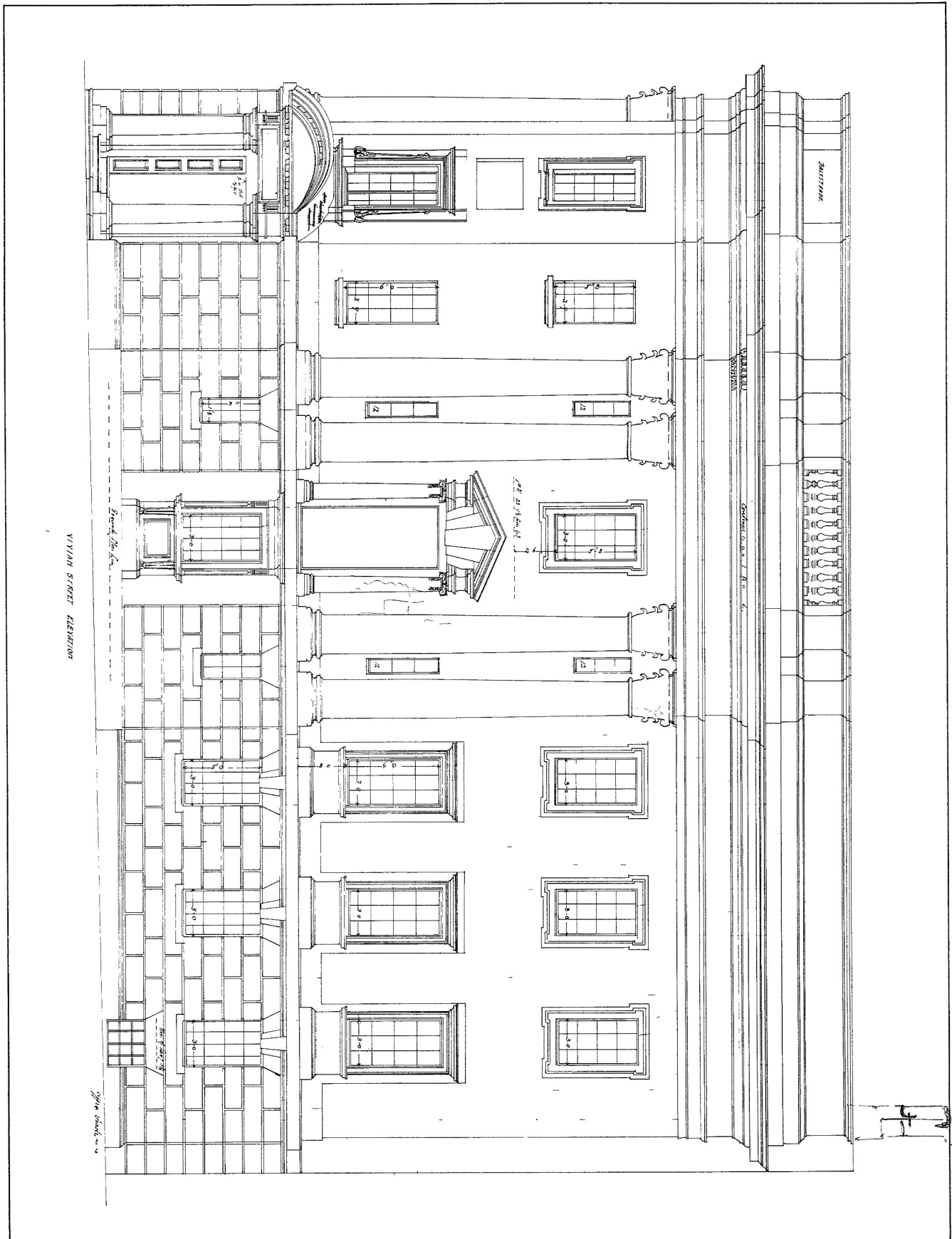


DRAWING NO 506/5
 Scale 1/4" = 1 FOOT
 DATE SEP 14 1915

THE N.B.N.Z. LTD TE ARO

Claude Jones & Co. ARCHITECT
 HARGREAVES BUILDINGS
 WELLINGTON N.Z.





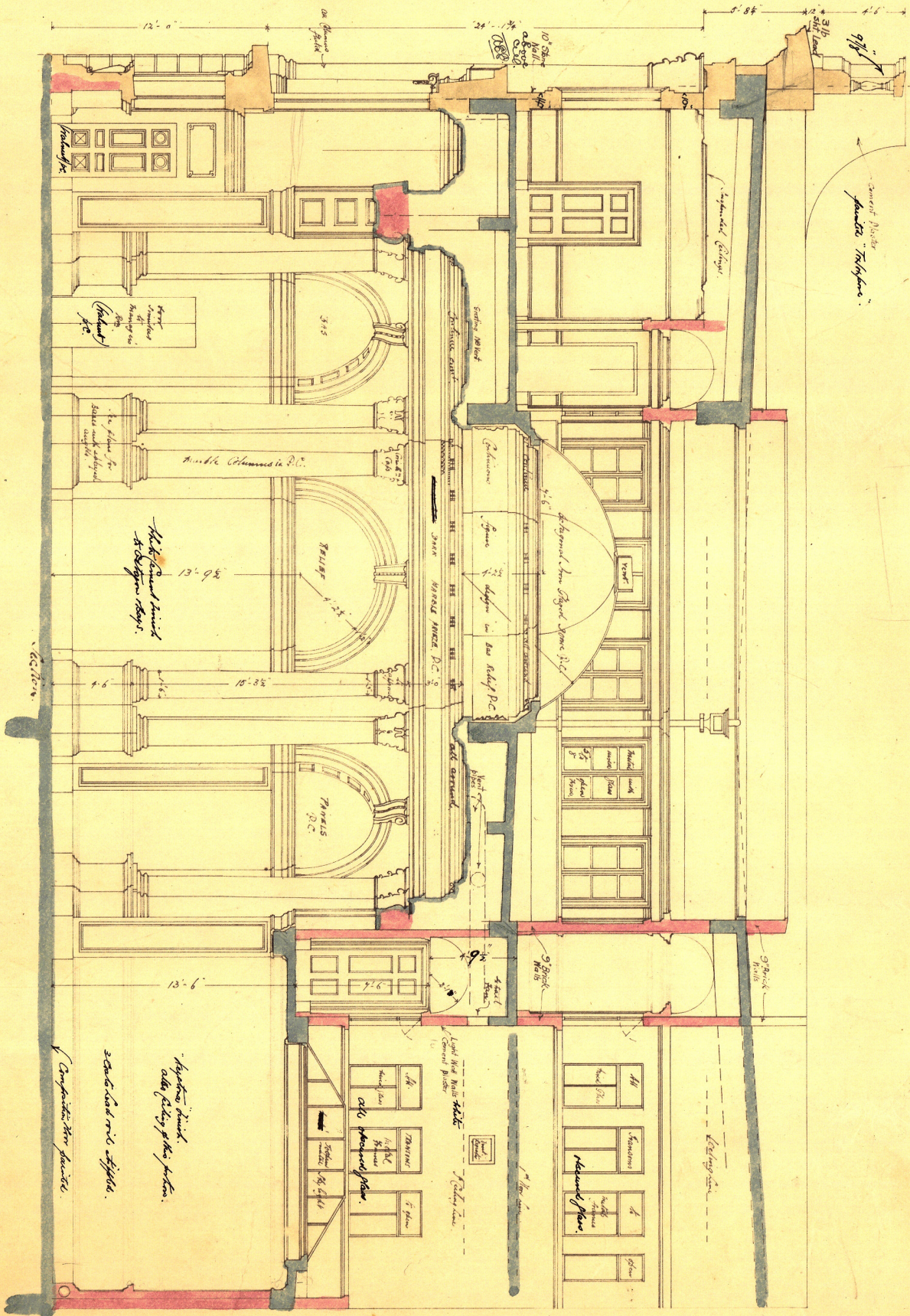
DRAWING NO 506/6
 Scale $\frac{1}{4}'' = 1 \text{ FOOT}$
 DATE SEP 14 1915.

THE N.B.N.Z. LTD TE ARO

Cawthron Jones & Co R.I.B.A.
 ARCHITECT

HARGREAVES BUILDINGS RECEIVED
 WELLINGTON N 23 JAN 1917





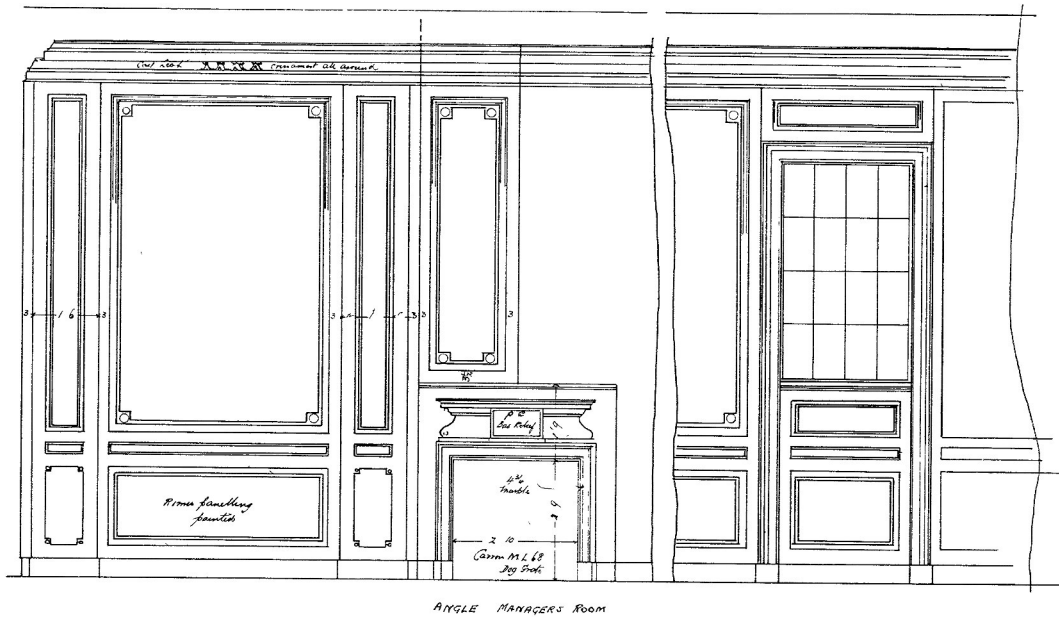
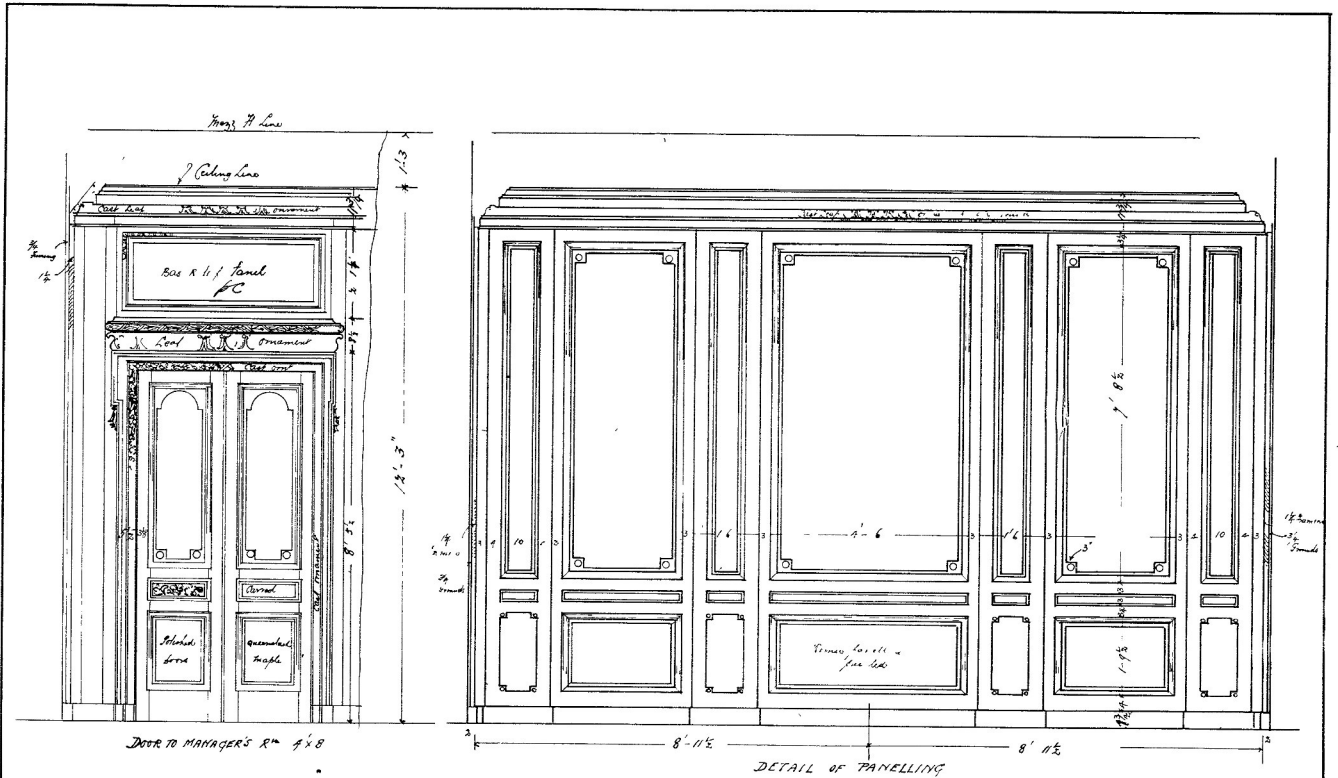
At each storey Stone Walls to be 14" thick up to window sill level and 10" above and under wall feet. *A.B.S.*

DRAWING NO 506/4
 Scale $\frac{1}{4}'' = 1 \text{ FOOT}$
 DATE SEP. 14. 1915.

THE N.B.N.Z. LTD TE ARO

Caudy Bros Ltd. P. B. A.
 ARCHITECT
 HARGREYTS BUILDINGS
 WELLINGTON, N.Z.





Note The plan of this room having been revised
the panelling shown on this drawing the
taken as typical only. J

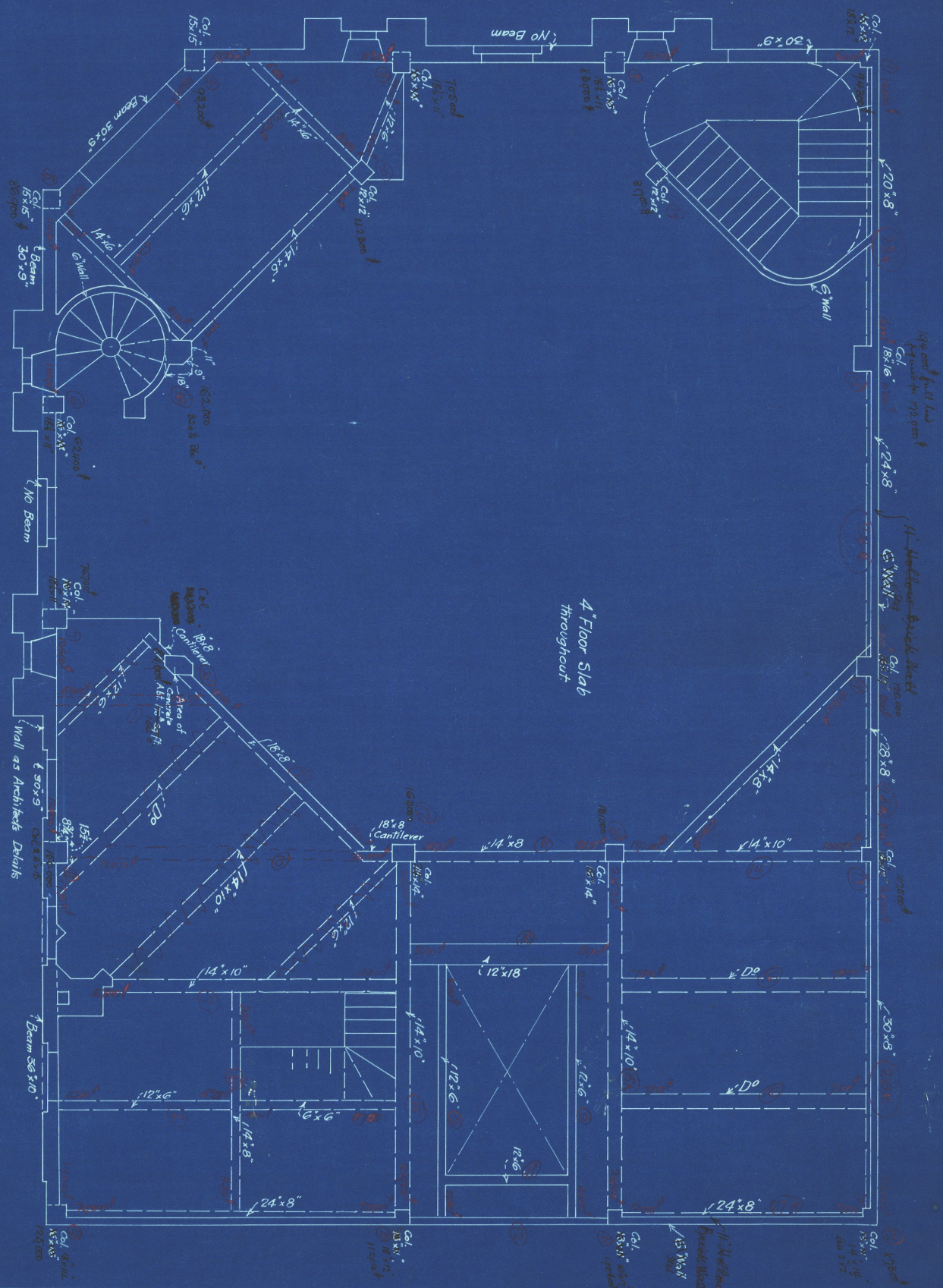


DRAWING NO 506/7
Scale 1/2" = 1 FOOT
DATE NOV 3 1915

THE N.B.N.Z. LTD TE ARO

Caudle Jones & Co. ARCHITECT
HARGREAVES BUILDINGS
WELLINGTON N.Z.

GROUND FLOOR PLAN SHOWING CONSTRUCTION OF
MEZZANINE FLOOR.



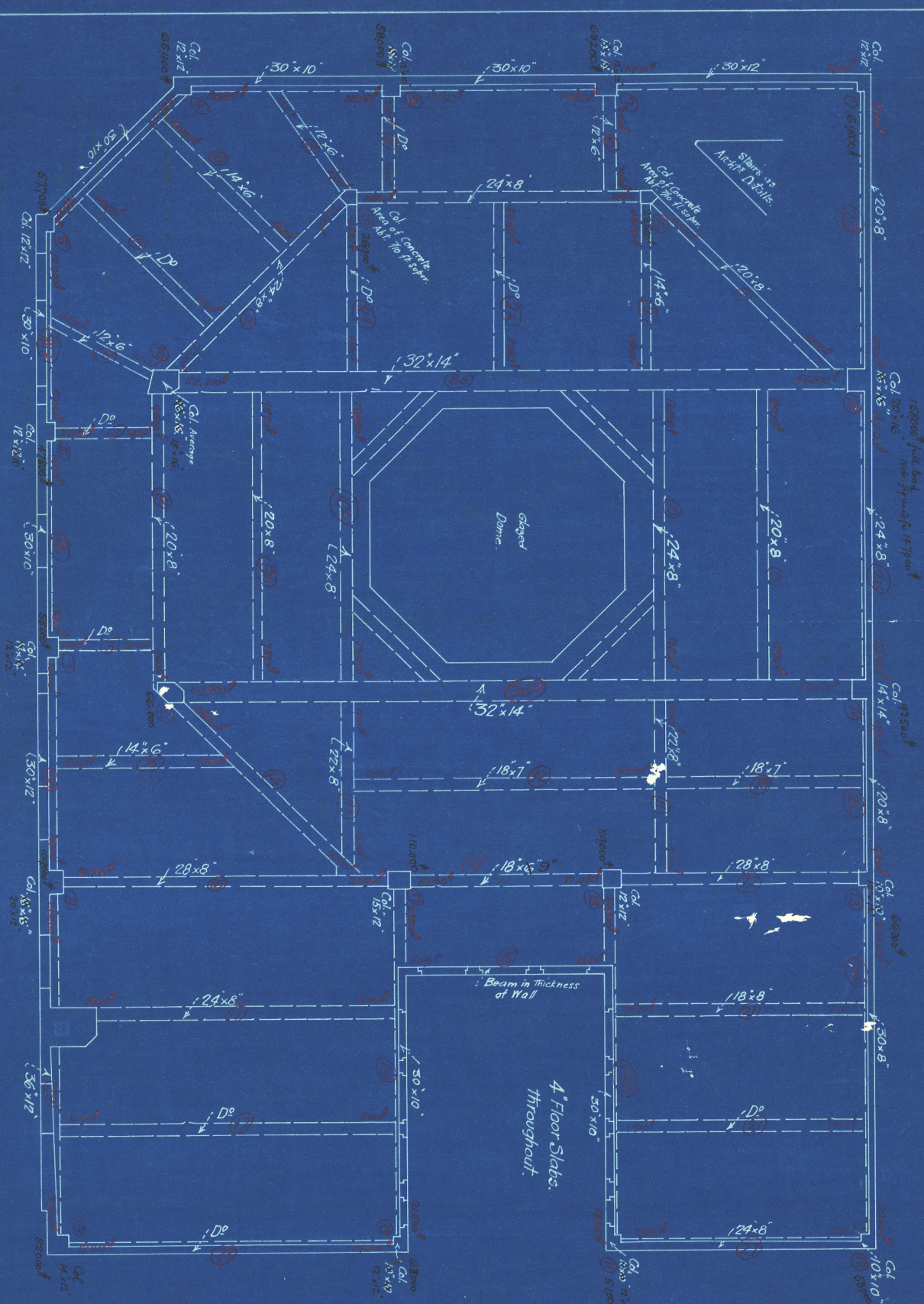
Claude Jones & Co. R. & A.
ARCHITECT
HARCOURT'S BUILDINGS
WELLINGTON

Scale: 4/4" = 1' inch
DWG NO 506/10
Nov 10th 1915

The M. B. M. F. Ltd
Te Oro.

KAHN SYSTEM OF
REINFORCEMENT.
THE TRUSSED CONCRETE STEEL CO. LTD
EQUITABLE BUILDING, LAMBTON QUAY
WELLINGTON
Arthur E. Straub ENGINEER

MEZZANINE FLOOR PLAN SHOWING CONSTRUCTION OF
FIRST FLOOR.



Claude Jones & Co. P.L.C.
ARCHITECT
HARCOURT'S BUILDINGS
WELLINGTON

Scale: 4ft = 1inch
DWG No 506/11
Nov 10th 1915.

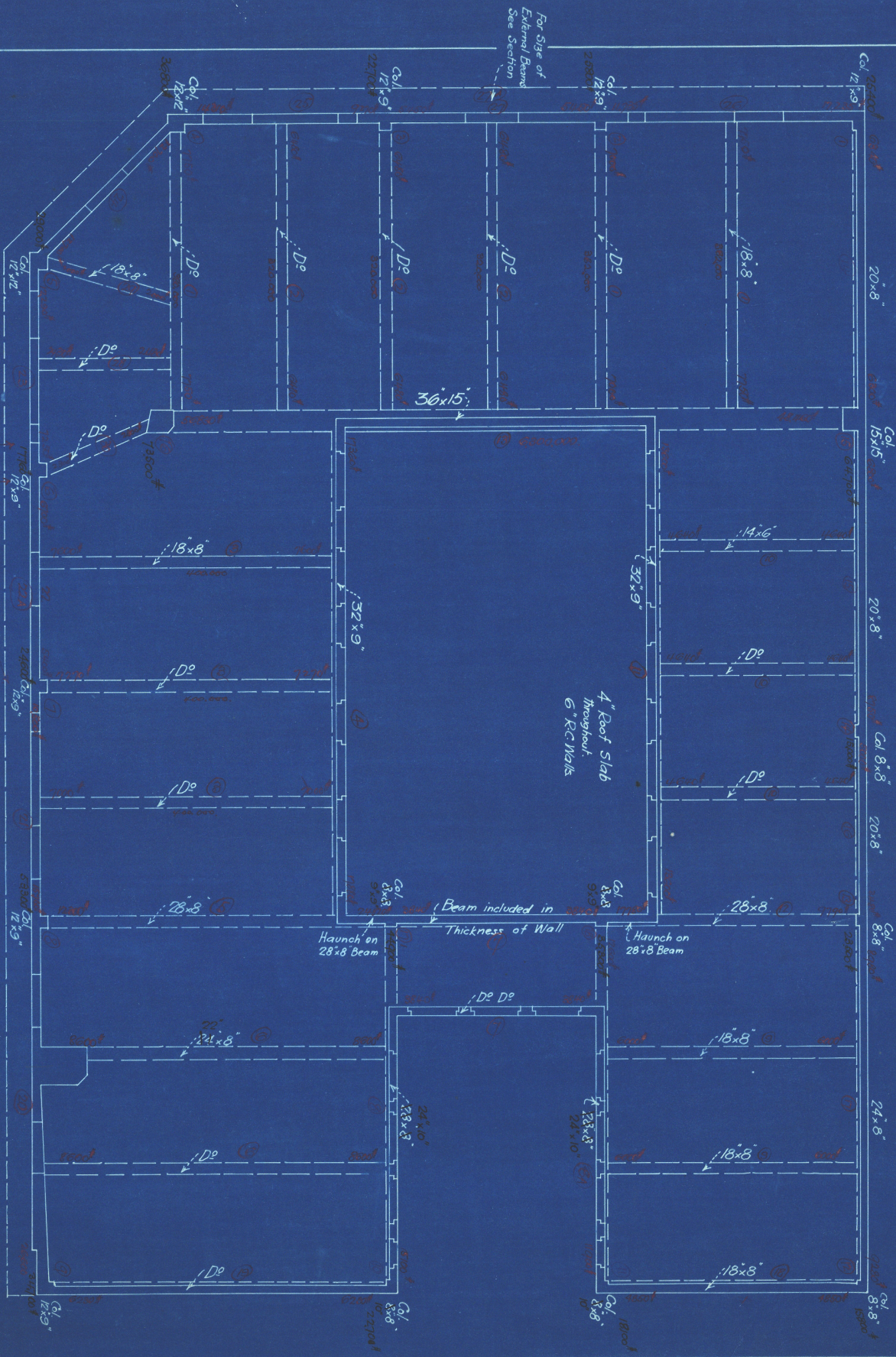
The N. B. N. F. Ltd
Te Oro.

KAHN SYSTEM OF
REINFORCEMENT.

THE TRUSSED CONCRETE STEEL CO^Y LTD
EQUITABLE BUILDING, LAMBTON QUAY,
WELLINGTON

Arthur G. Brown, ENGINEER.

FIRST FLOOR PLAN SHOWING CONSTRUCTION OF ROOF



For Size of External Beams See Section

David Jones & Co. Ltd.
 ARCHITECT
 HARCOURT'S BUILDINGS
 WELLINGTON.

Scale: 4ft = 1inch
 DWG No 506/12
 Nov. 10th 1915.

The N.B.M.Z. Ltd
 Te Oro.

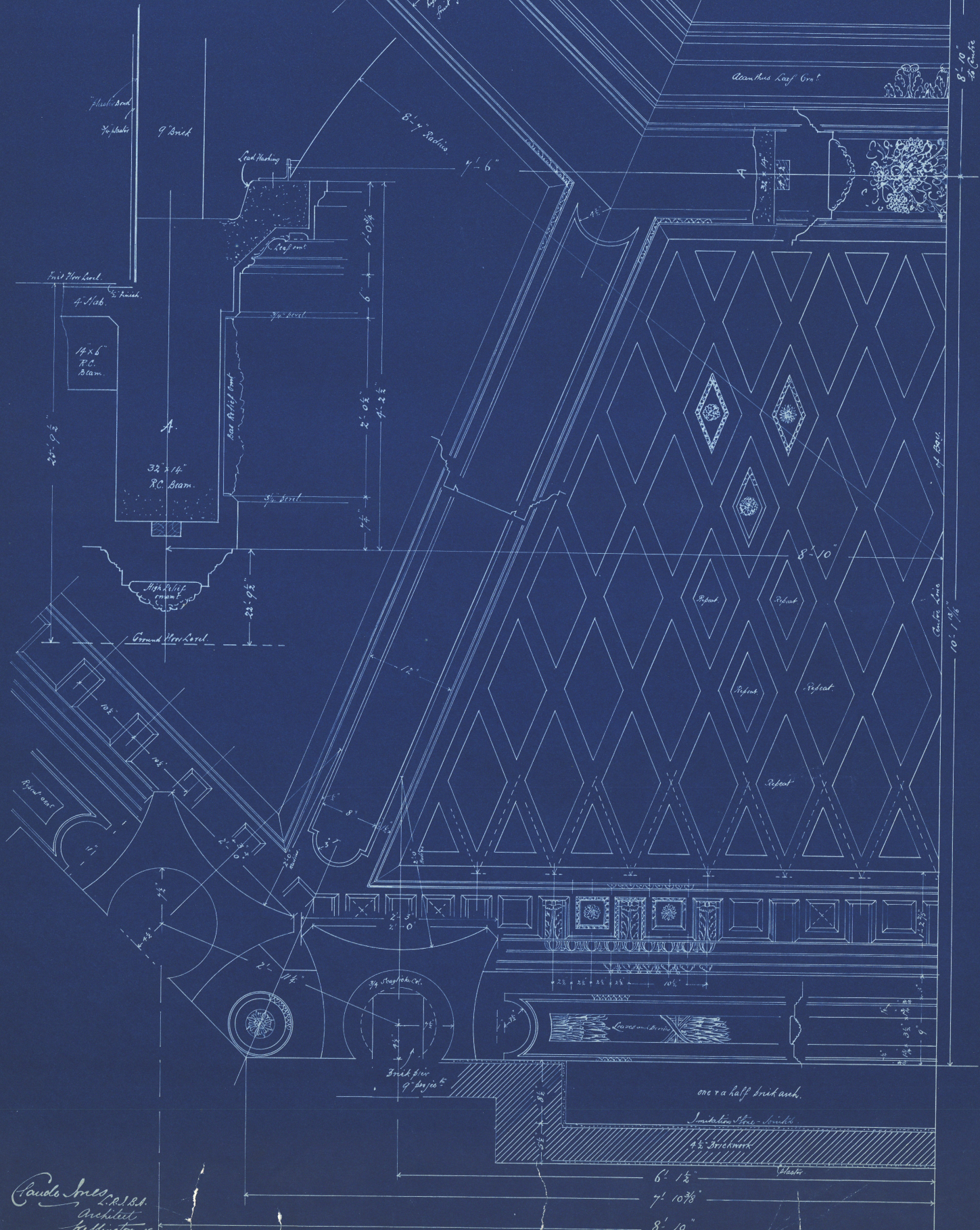
KAHN SYSTEM OF REINFORCEMENT
 THE TRUSSED CONCRETE STEEL CO. LTD
 EQUITABLE BUILDING, LAMBTON QUAY
 WELLINGTON.
 Arthur E. Ewall, ENGINEER.

THE NATIONAL BANK OF N.Z.L.^Y

TE-ARO. WELLINGTON.

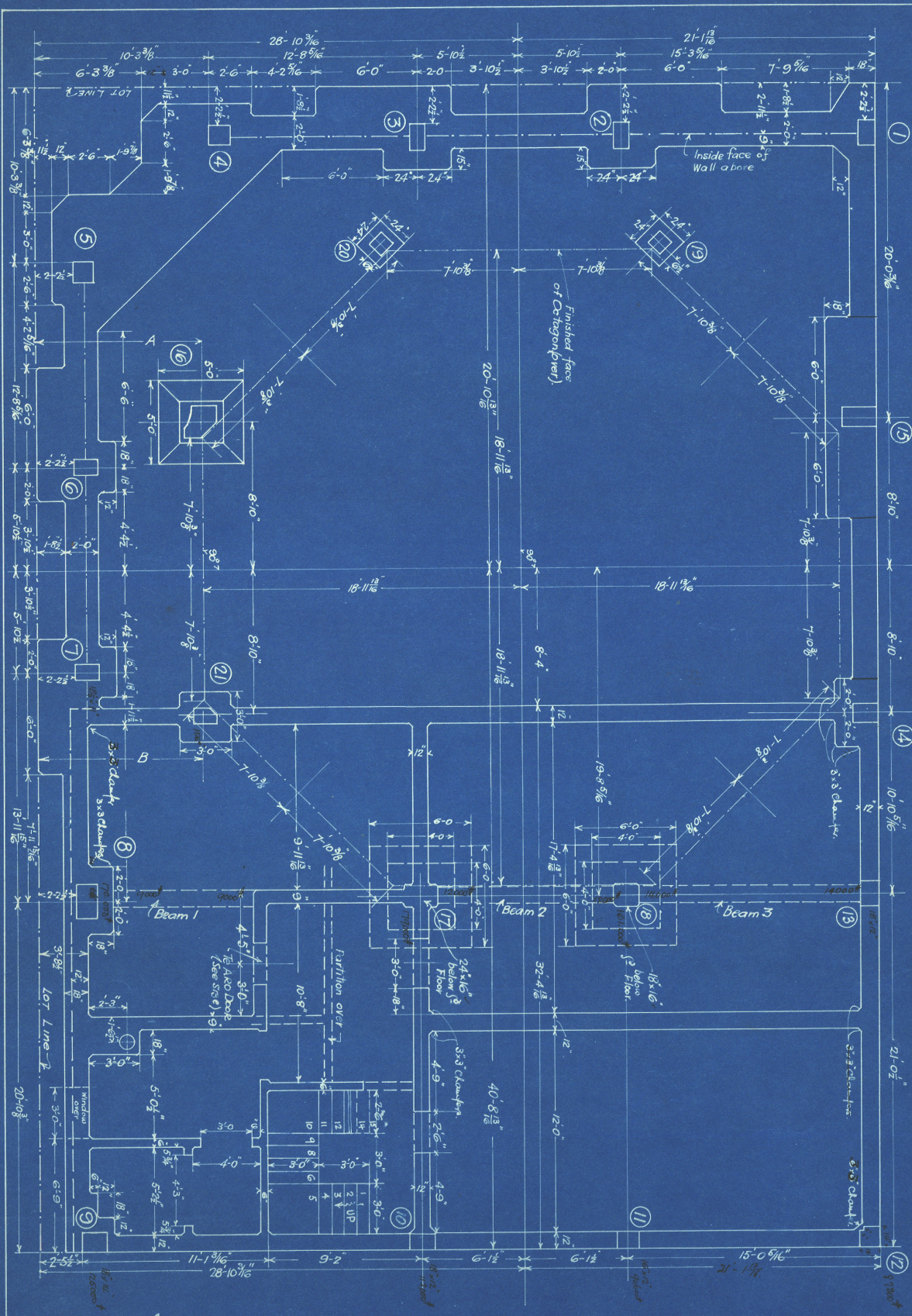
DRAWING NO 506/13. 1/2" = 1 foot.

Iron framing of frame
(Lead glazed)



Paulo Ince, R.A.S.A.
Architect
Wellington N.Z.
22/10/10

one & a half brick work.
Iron framing of frame - plaster
4 1/2" Ironwork
Plaster
6' 1/2"
7' 10 3/8"
8' 10"

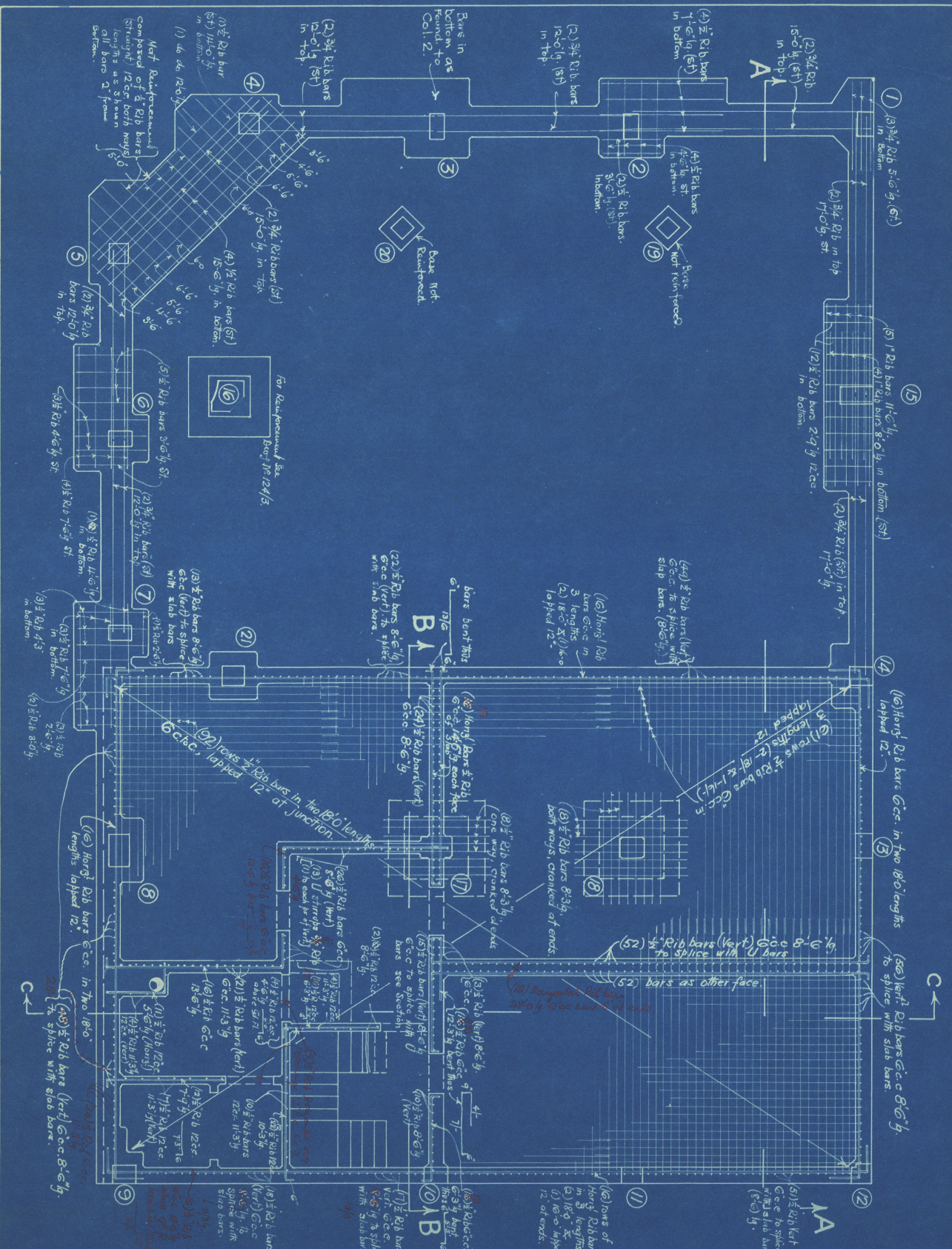


Note: see notes on the adjacent page for details of the ceiling and floor.

Paul Jones & P.S.S.
 ARCHITECT
 HARCOURT'S BLDGS, WELLINGTON.
 W.DWG NO 124/1 7/3/17

THE NATIONAL BANK OF NEW ZEALAND LIMITED.
 TE ARU, WELLINGTON.
 BASEMENT PLAN SHOWING LAYOUT OF COLUMNS,
 STRONG ROOMS ETC.
 KAHN SYSTEM OF REINFORCEMENT.

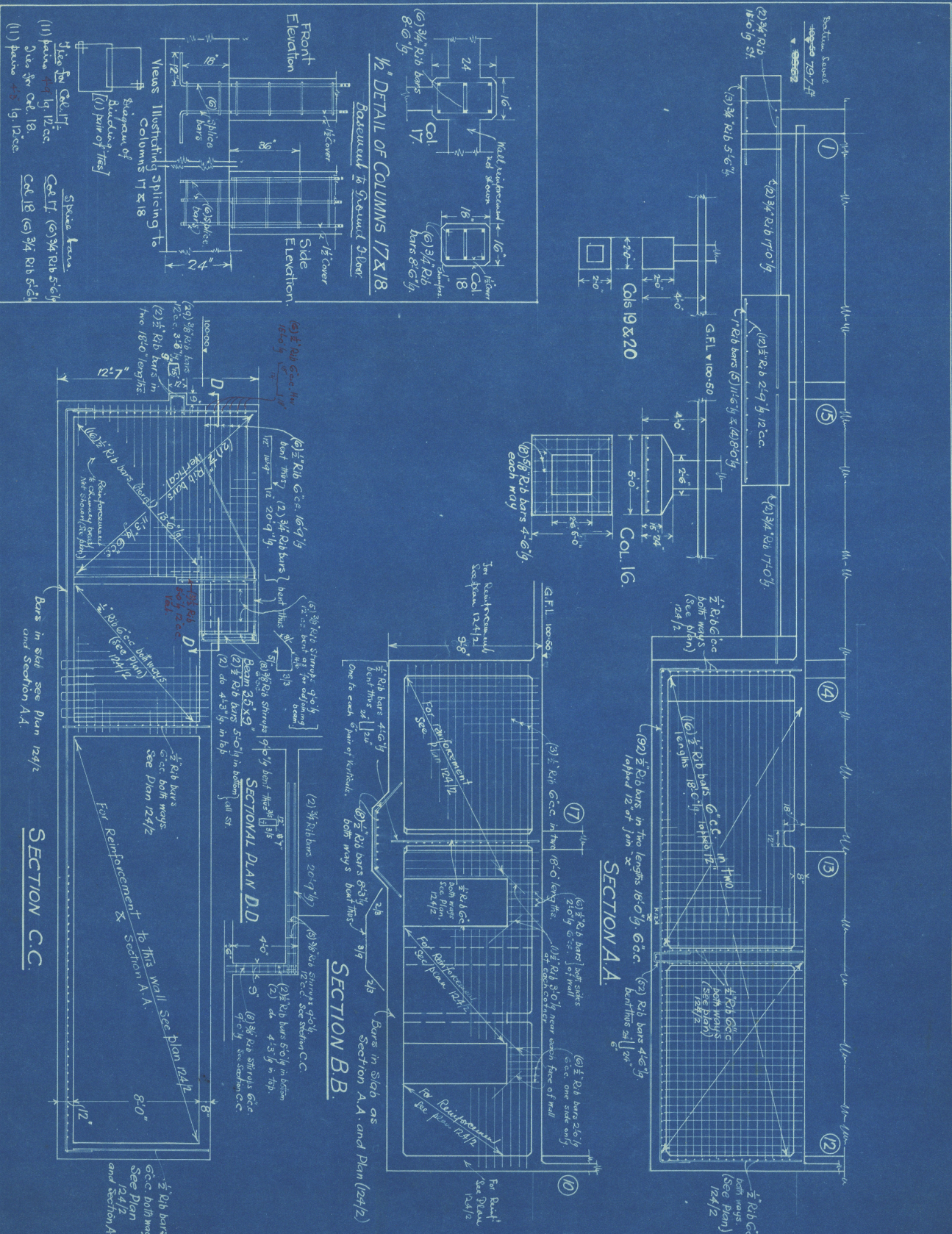
THE TRUSSED CONCRETE STEEL CO LTD,
 CAXTON HOUSE, WESTMINSTER, LONDON.
 RES. ENG. for N.Z. *Arthur B. Brown*
 EQUITABLE BUILDING,
 LAMBTON QUAY, WELLINGTON.
 AGENTS: John Chambers & Son Ltd, W'kon.



Claude Jones & P. J. A. T.
 ARCHITECT, HARCOURT'S BLDGS, WELLINGTON.
 Scale: 4A = 1 in.
 W.DWG No 124/2
 16/3/17

THE NATIONAL BANK OF NEW ZEALAND LIMITED.
 TE ARO. WELLINGTON.
 BASEMENT PLAN SHOWING REINFORCEMENT TO
 WALLS, FOUNDS, ETC
 KAHN SYSTEM OF REINFORCEMENT.

THE TRUSSSED CONCRETE STEEL CO LTD,
 CAXTON HOUSE, WESTMINSTER, LONDON.
 RES. ENG for N.Z. *Arthur H. E. Evans*
 EQUITABLE BUILDING
 LAMBTON QUAY, WELLINGTON
 AGENTS: John Chambers & Son Ltd W'gar.



THE NATIONAL BANK OF NEW ZEALAND LIMITED
 TE ARO WELLINGTON.
 SECTIONS THROUGH BASEMENT & FOUNDATIONS.
 KAHN SYSTEM OF REINFORCEMENT.

THE TRUSSED CONCRETE STEEL CO. LTD.
 CAXTON HOUSE, WESTMINSTER, LONDON.
 RES. ENG. for N.Z. *Arthur Edwards*
 EQUITABLE BUILDING
 LAMBTON QUAY, WELLINGTON
 AGENTS: John Chambers & Son Ltd. W'kon

ARCHITECT, HARCOURTS BLDGS, WELLINGTON.
 Scale: 4ft = 1in.
 W.DWG. NO 124/3 14/3/17

Claude Jones Ltd. R. Ltd.

Beam No	SIZE	Reinforcement			Remarks	Bar Mark	$\frac{1}{2}$ " Details etc.	SECTION	$\frac{1}{2}$ " Bars
		No	Size	Length					
17	12"x8"	2	$\frac{3}{4}$ " Kahn.	6'-0"					
23	30"x8 1/2"	2	$\frac{5}{8}$ " Rib	20'-0"	Bent.	p			
		2	$\frac{5}{8}$ " Rib	19'-0"	Bt.	q			
		2	$\frac{5}{8}$ " Rib	18'-0"	Straight	r			
28	30"x8 1/2"	2	$\frac{3}{4}$ " Rib	20'-0"		a		Bars arranged thus in bottom. c d d c b a a b	
		2	do.	22'-0"		b			
		2	do.	19'-0"		c			
		2	do.	16'-0"		d			
29	18"x10"	1	$\frac{3}{4}$ " Rib	16'-0"	Bt.	e			
		2	do	13'-0"	St.	f			
32	24"x15"	1	$\frac{5}{8}$ " Rib	12'-6"	Bt.	g			
		2	do	12'-6"	St.	h			
20	14"x8"	2	$\frac{3}{4}$ " Kahn	15'-0"					
		2	$\frac{1}{2}$ " Rib	16'-0"	nested in Kahn bars				
22	24"x4 1/2"	3	$\frac{5}{8}$ " Rib	16'-9"					
		12	$\frac{3}{8}$ " do	4'-6"	Stirrups				

W.D.W.G. No 124/9 2/3/18	THE NATIONAL BANK OF NEW ZEALAND LIMITED TE ARO WELLINGTON SCHEDULE OF MEZZANINE FLOOR BEAMS KAHN SYSTEM OF REINFORCEMENT	THE TRUSSED CONCRETE STEEL CO LTD CAXTON HOUSE, WESTMINSTER, LONDON RES. ENG for N.Z. EQUITABLE BUILDING, LAMBTON QUAY, WELLTON. AGENTS: John Chambers & Son, WELLINGTON
-----------------------------	---	--

Beam No	Size	Reinforcement		Remarks	Bar Mk	1/2 Details etc.	Section	No of Beams
		No	Size					
23	30x9	2	3/4 Rib 17'-3"	Hook	a			1
		2	3/4 Rib 22'-0"	Bent	b			
		10	3/8 Rib 6'-3"	Bt	c			
24	30x9	2	3/4 Rib 17'-6"	St	d			1
		1	3/4 Rib 25'-0"	Bt	e			
		10	3/8 Rib 6'-3"	Bt	c			
25	30x9	3	5/8 Rib 10'-6"	St	f	In bottom.		1
26	30x9	4	3/4 Rib 22'-6"	Hook	g			1
		3	3/4 Rib 22'-6"	Bt	h			
		3	7/8 Rib 8'-6"	St	i			
		17	3/8 Rib 6'-3"	Bt	c			
27	30x9	2	3/4 Rib 15'-0"	St	k			1
		1	3/4 Rib 16'-3"	Bt	l			
28	30x9	2	3/4 Rib 21'-0"	St	m			1
		1	3/4 Rib 23'-0"	Bt	n			
		2	3/8 Rib 20'-0"	Bt	o			
		10	3/8 Rib 6'-3"	Bt	c			
29	36x12	2	3/4 Rib 22'-0"	Hook	p			1
		2	3/4 Rib 23'-3"	Bt	q			
		2	3/4 Rib 24'-3"	Bt	r			
		15	3/8 Rib 7'-6"	Bt	s			
30	30x10	2	3/4 Rib 14'-6"	St	t			1
		1	3/4 Rib 21'-6"	Bt	u			
		4	3/8 Rib 6'-3"	Bt	v			
31	30x10	2	5/8 Rib 12'-6"	St	w			2
		1	3/8 Rib 20'-0"	Bt	x			
		4	3/8 Rib 6'-3"	Bt	y			
32	30x10	2	5/8 Rib 12'-6"	St	z			1
		1	3/8 Rib 12'-6"	Bt	A			
		4	3/8 Rib 6'-3"	Bt	y			
33	30x10	2	5/8 Rib 12'-6"	St	B			2
		1	3/8 Rib 17'-9"	Bt	C			
		4	3/8 Rib 6'-3"	Bt	y			
34	30x12	2	3/4 Rib 16'-0"	St	D			1
		2	3/4 Rib 20'-9"	Bt	E			
		12	3/8 Rib 6'-3"	Bt	y			

ARCHITECT
HARCOURT'S BUILDING
WELLINGTON
W.D.W.G No 124/13 22-4-16

THE NATIONAL BANK OF NEW ZEALAND LIMITED
TE ARO WELLINGTON
DETAILS OF FIRST FLOOR BEAMS
KAHN SYSTEM OF REINFORCEMENT

THE TRUSSED CONCRETE STEEL CO LTD
CAXTON HOUSE, WESTMINSTER, LONDON.
RES. ENG. FOR N.Z.
EQUITABLE BUILDING
LAMBTON QUAY, WELLINGTON.
AGENTS:- John Chambers & CO LTD
WELLINGTON