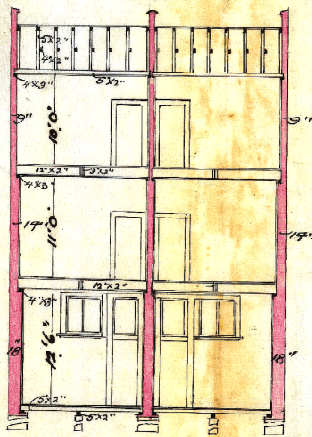


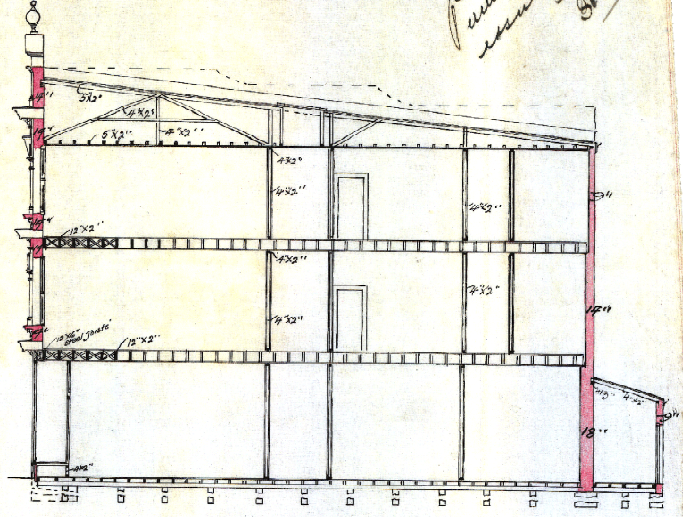
*W. Mackin*  
*Architect*

# PLAN OF SHOPS AND DWELLINGS IN CUBA STREET FOR DR. MACKIN Scale 8<sup>th</sup> 1<sup>st</sup> inch

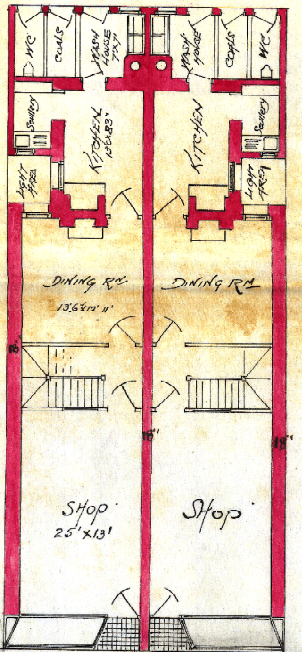
*Permitting  
issued 10/10/04*



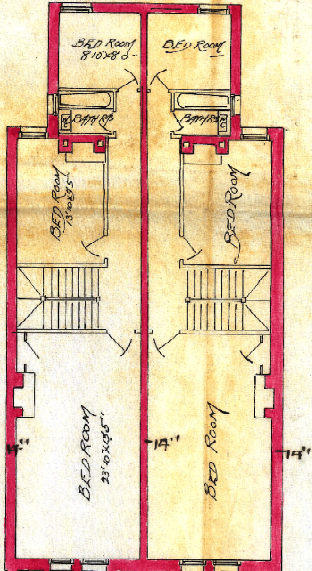
TRANSVERSE SECTION



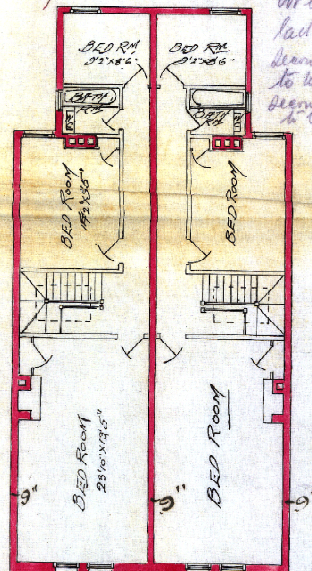
LONGITUDINAL SECTION



GROUND FLOOR PLAN



FIRST FLOOR PLAN



SECOND FLOOR PLAN



WINDOW ELEVATION

*note windows are  
to be put in to the  
satisfaction of  
the inspector  
At each house an iron  
ladder to be fixed from  
second floor front window  
to second floor back window  
to be seen from  
p.w.*

100-22-23-24-25-26-27-28-29-30