

LONGITUDINAL SECTION E.F.



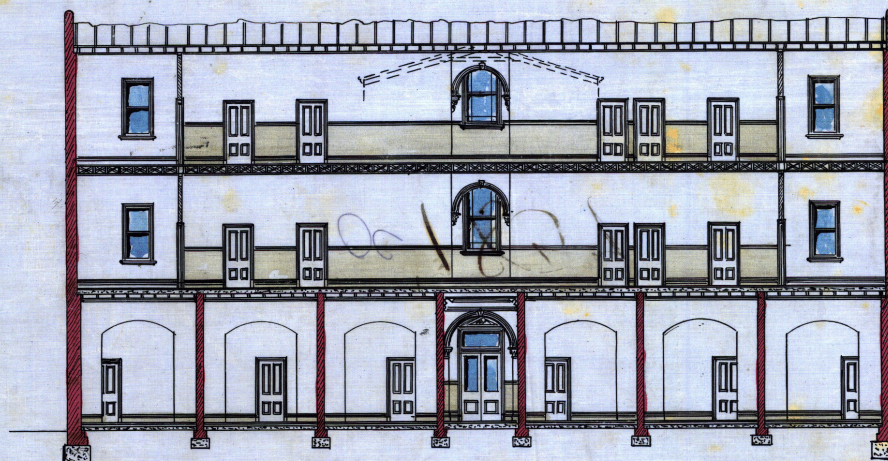
TRANSVERSE SECTION A.B.

PROPOSED PEOPLE'S PALACE

WELLINGTON N.Z.

SCALE:-

$\frac{1}{8}$ " inch = one foot.



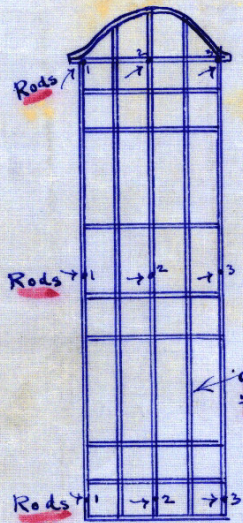
TRANSVERSE SECTION C.D.

*St. Colson & Son
Architect
49 Bank Street
Melbourne Victoria
July 1907.*

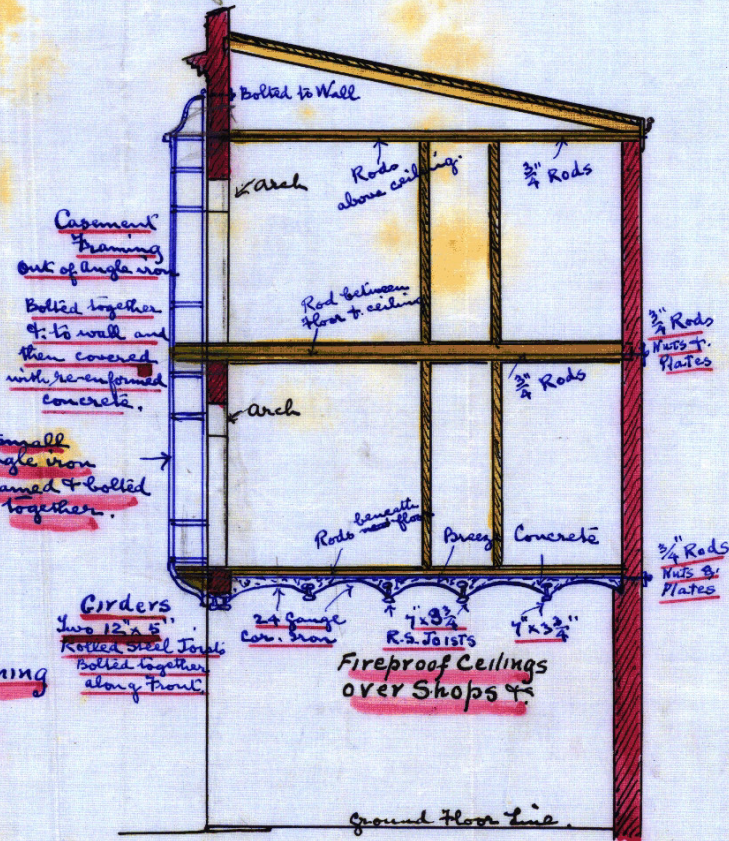
PROPOSED PEOPLE'S PALACE, WELLINGTON, N.Z.

Not to Scale.

Handwritten notes:
 good
 outside



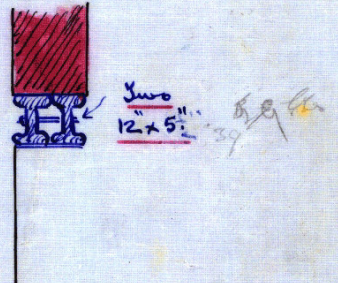
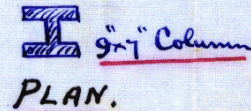
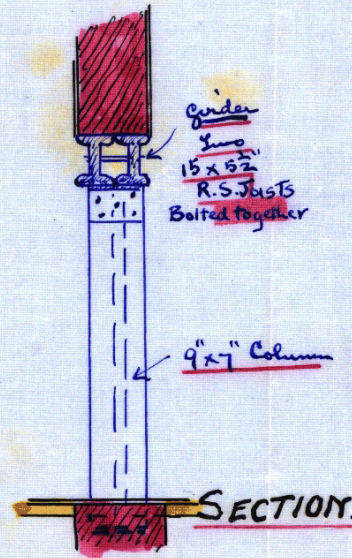
Front of Casement Framing



CASEMENT WINDOWS &c.
FRONT ELEVATION.

Girder over Dining Room

Girders over Front Shops &c.

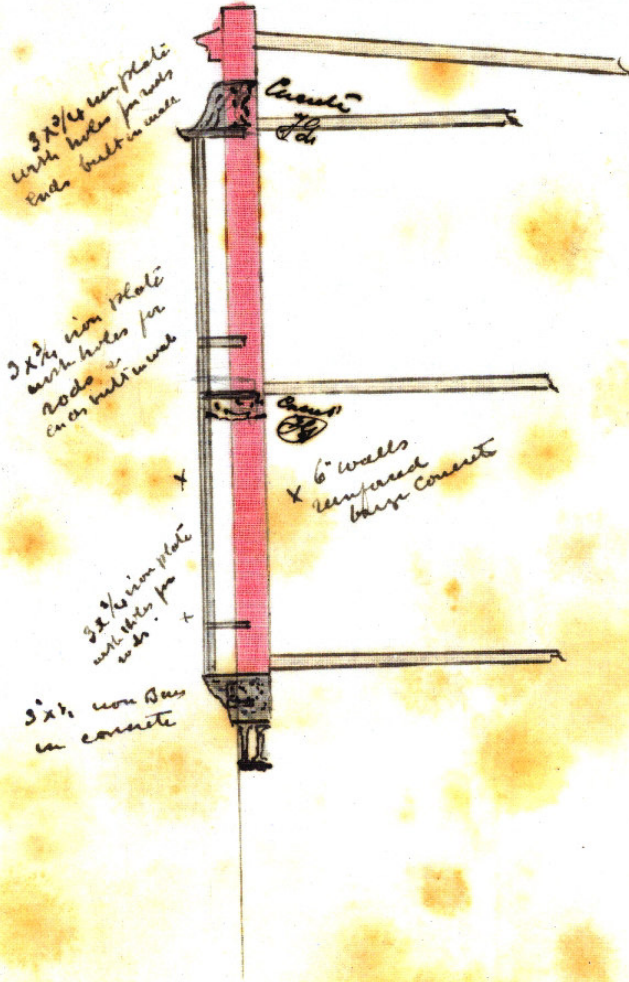


St. Col. Saunders
Architect
69 Bourke Street
Melbourne, Vic
Oct. 1907.

Detail Plan
 Grill Windows
 S. 4. Peoples Palace
 Cuba Street



3 x 3/4 iron plate
 with holes for 7/8 rods
 ends turned and built
 9" in wall



3 x 3/4 iron plate
 with holes for rods
 ends built in wall

3 x 3/4 iron plate
 with holes for
 rods in
 9" in wall

3 x 3/4 iron plate
 with holes for
 rods in 9"

5 x 1/2 iron bar
 in concrete

Cast
 7/8

Cast
 7/8

6" walls
 reinforced
 large concrete

0002 111 5225-004