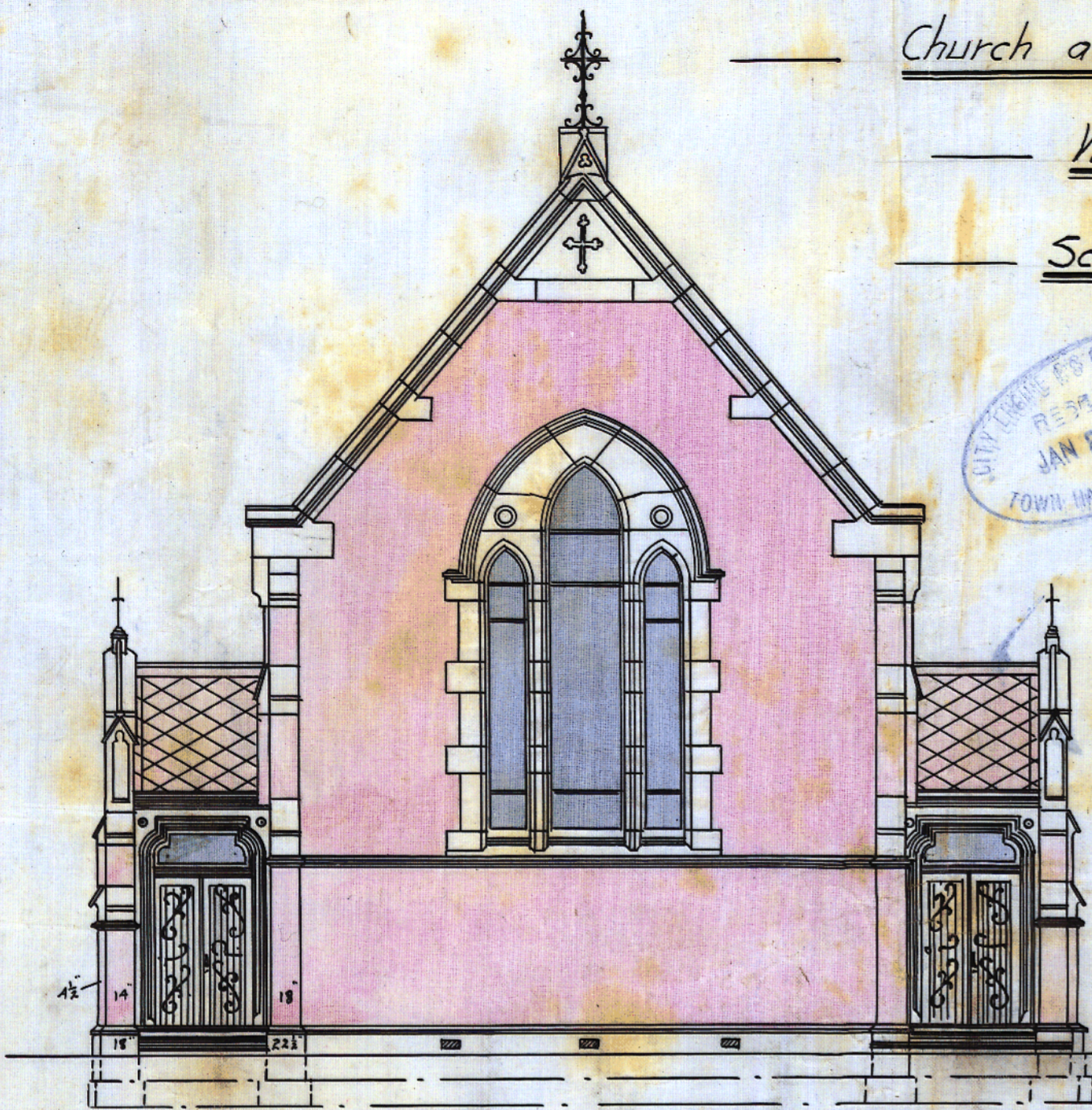


Church at Hawker Street.

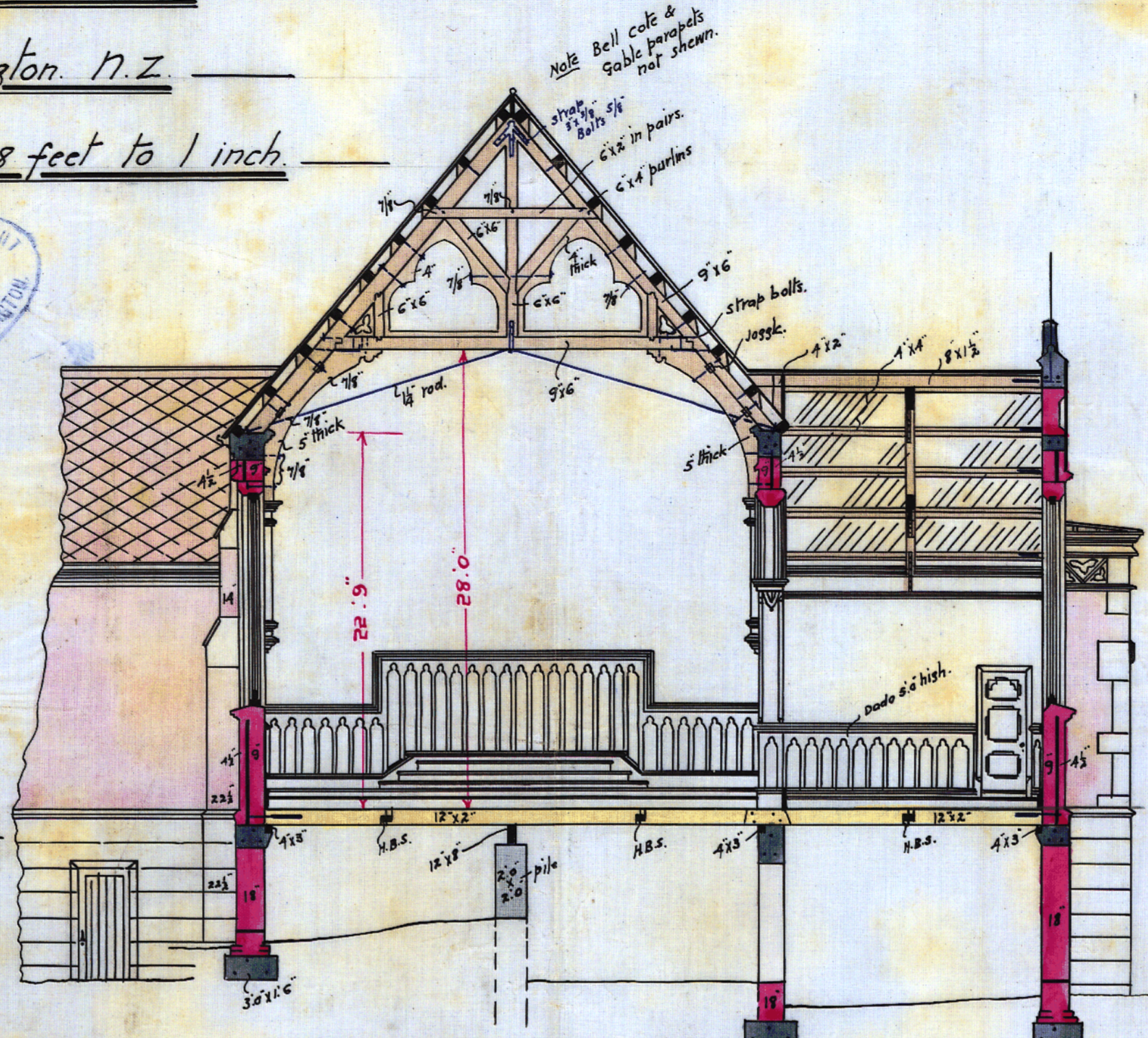
Wellington. N.Z.

Scale 8 feet to 1 inch.

CITY ENGINEERS & ARCHITECTS  
RESERVED  
JAN 28 1908  
FOOT WALL, WELLINGTON



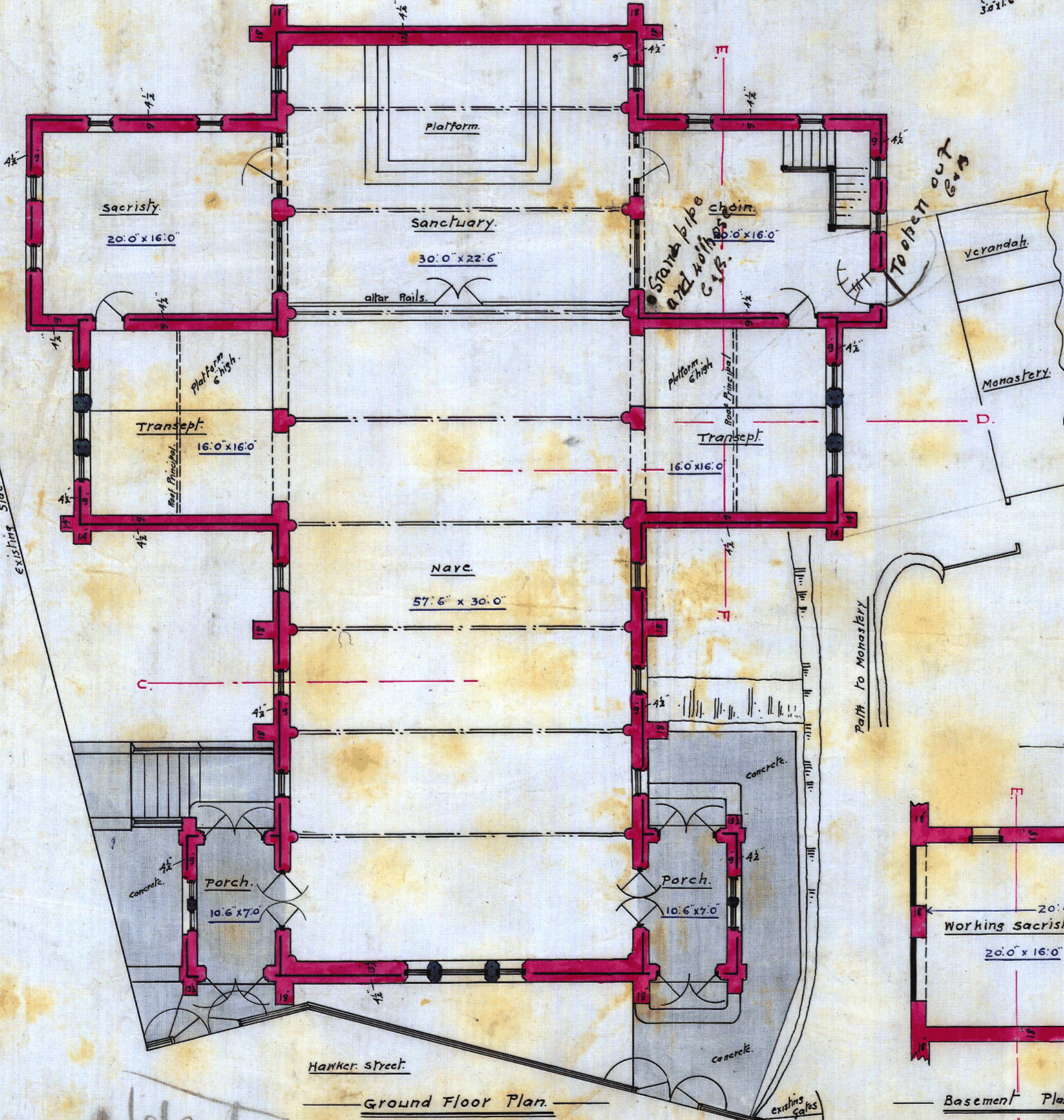
Elevation to Hawker Street.



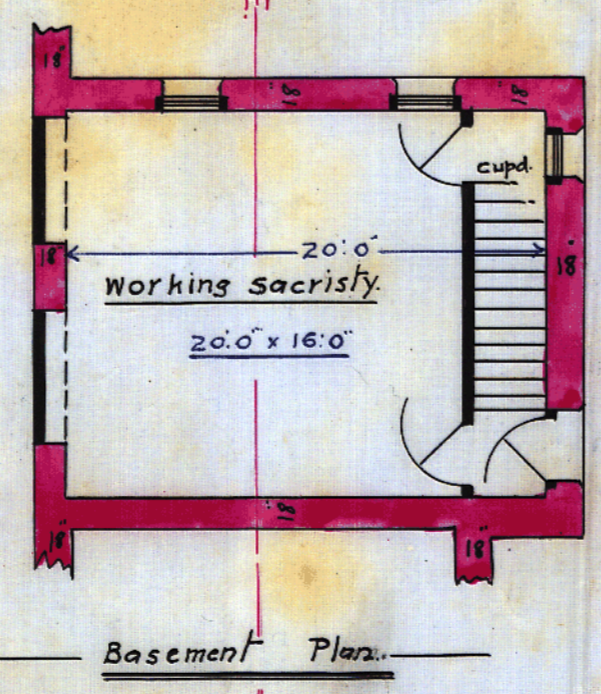
Section C-D.



Section E-F.



Ground Floor Plan.



Basement Plan.



Elevation towards Monastery.

Permit may be issued  
W.D.M.  
5.2.08

Locality plan returned  
W.D.M.  
29.1.08

Per F.H.S.  
Architect  
Wellington N.Z.  
15/1/08

Handwritten notes and signatures, including 'W.D.M.' and '5.2.08'.

Handwritten initials 'W.D.M.' in the bottom left corner.