

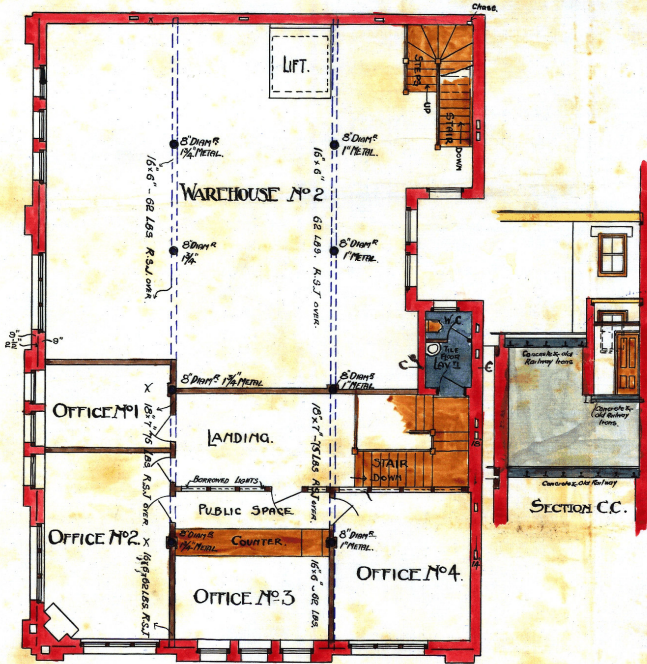
WAREHOUSE & OFFICES, FEATHERSTONE STREET.

FOR MESSRS MURRAY ROBERTS & CO

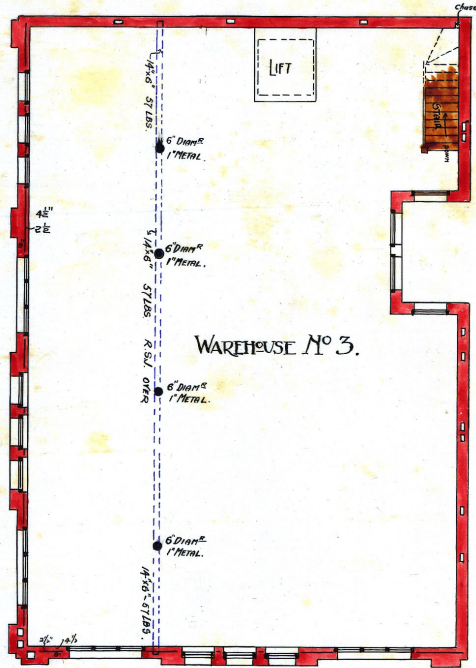


Handwritten notes:
 10.12.10
 11.12.10
 12.12.10
 13.12.10
 14.12.10
 15.12.10
 16.12.10
 17.12.10
 18.12.10
 19.12.10
 20.12.10
 21.12.10
 22.12.10
 23.12.10
 24.12.10
 25.12.10
 26.12.10
 27.12.10
 28.12.10
 29.12.10
 30.12.10
 31.12.10

Handwritten notes:
 1.12.10
 2.12.10
 3.12.10
 4.12.10
 5.12.10
 6.12.10
 7.12.10
 8.12.10
 9.12.10
 10.12.10
 11.12.10
 12.12.10
 13.12.10
 14.12.10
 15.12.10
 16.12.10
 17.12.10
 18.12.10
 19.12.10
 20.12.10
 21.12.10
 22.12.10
 23.12.10
 24.12.10
 25.12.10
 26.12.10
 27.12.10
 28.12.10
 29.12.10
 30.12.10
 31.12.10

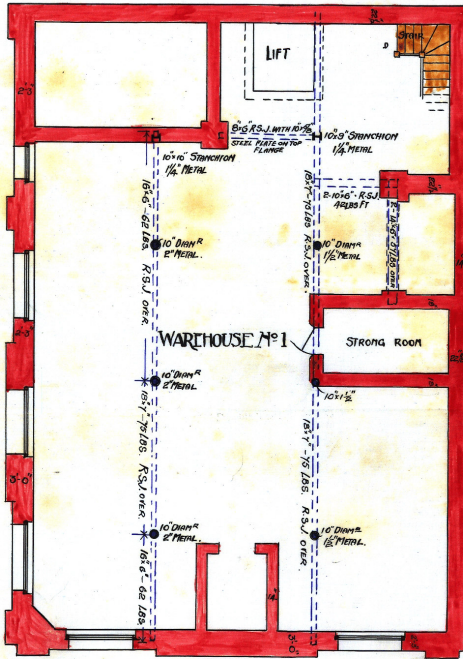


FIRST FLOOR PLAN

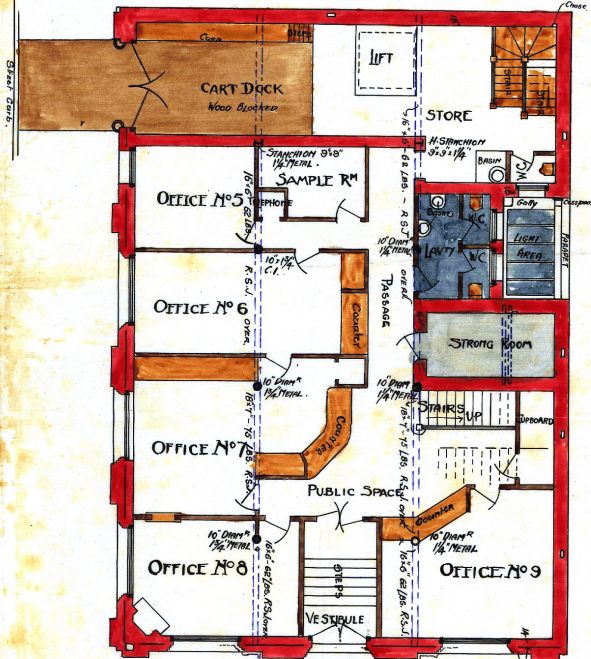


SECOND FLOOR PLAN.

Handwritten number: 288



BASEMENT PLAN.



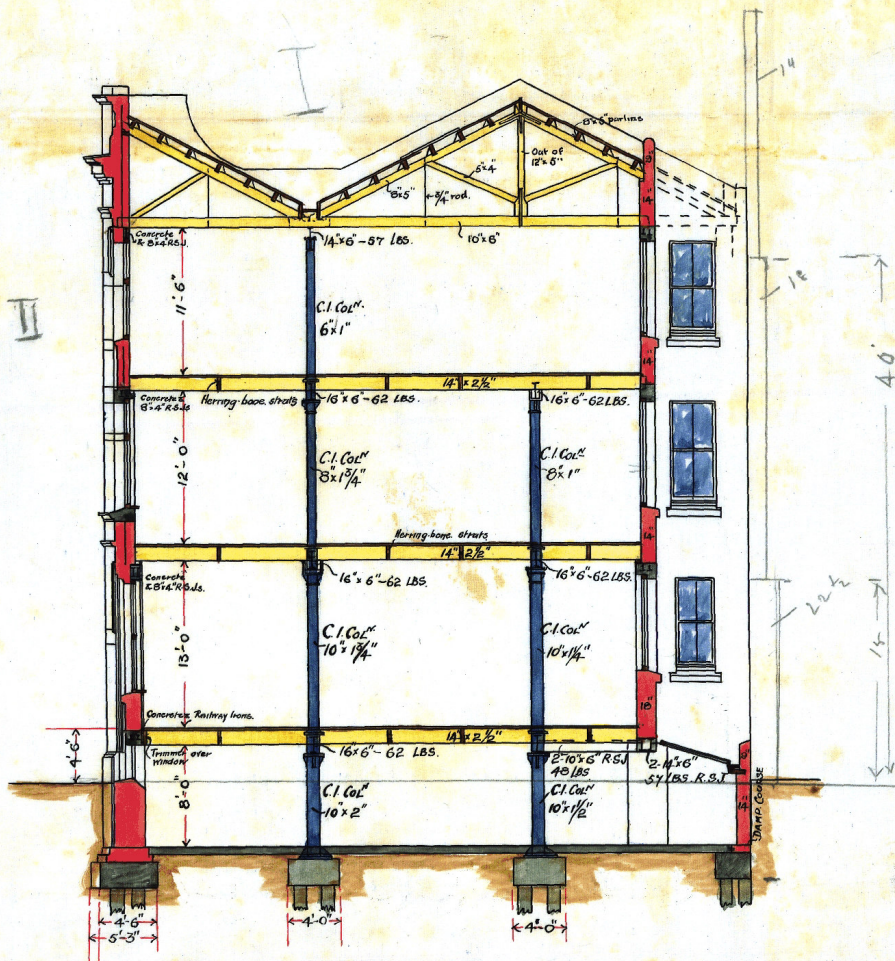
GROUND PLAN.

Penty & Blake.
Architects.

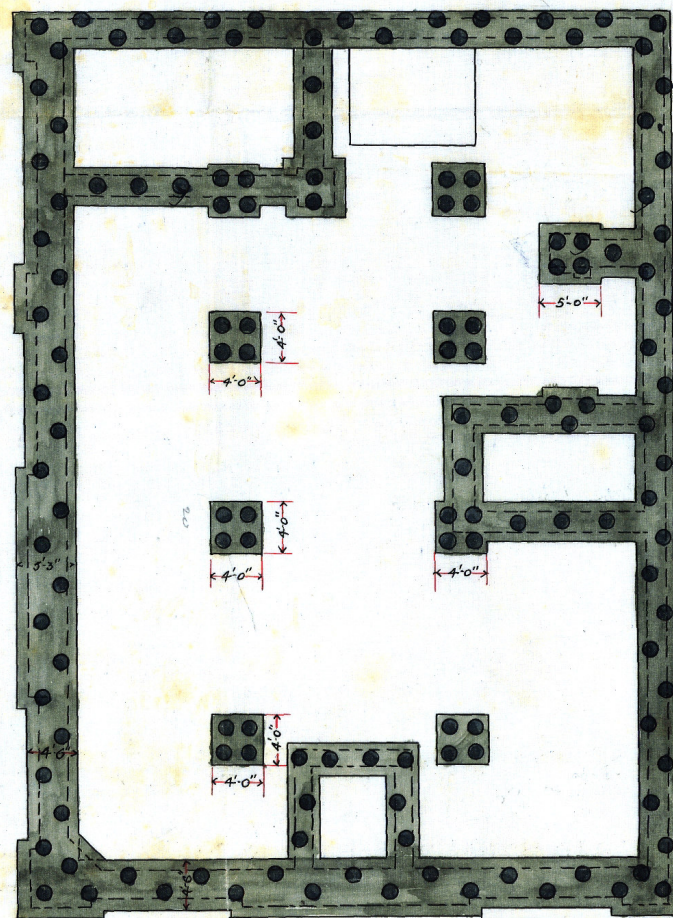
WAREHOUSE & OFFICES,
 FEATHERSTONE STREET
 FOR MESSRS MURRAY ROBERTS & Co



FRONT ELEVATION.



SECTION A-A.



FOUNDATION PLAN

*Penty & Blake,
 Architects.*

