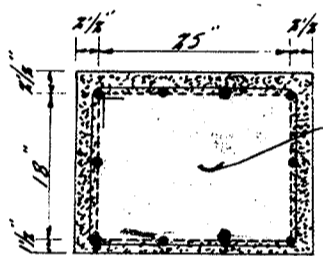


*R. Y. Silver M. I. Struct. E.
Consulting Engineer
Wellington
Feb 25 1928*

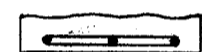
GREY STREET ELEVATION.

Note:- Existing 3/8" bars, at 6" crs. each way and each side of walls where exposed, in cutting openings, to be utilized as far as possible in binding and securing the new work as will be indicated on the site as the work proceeds.



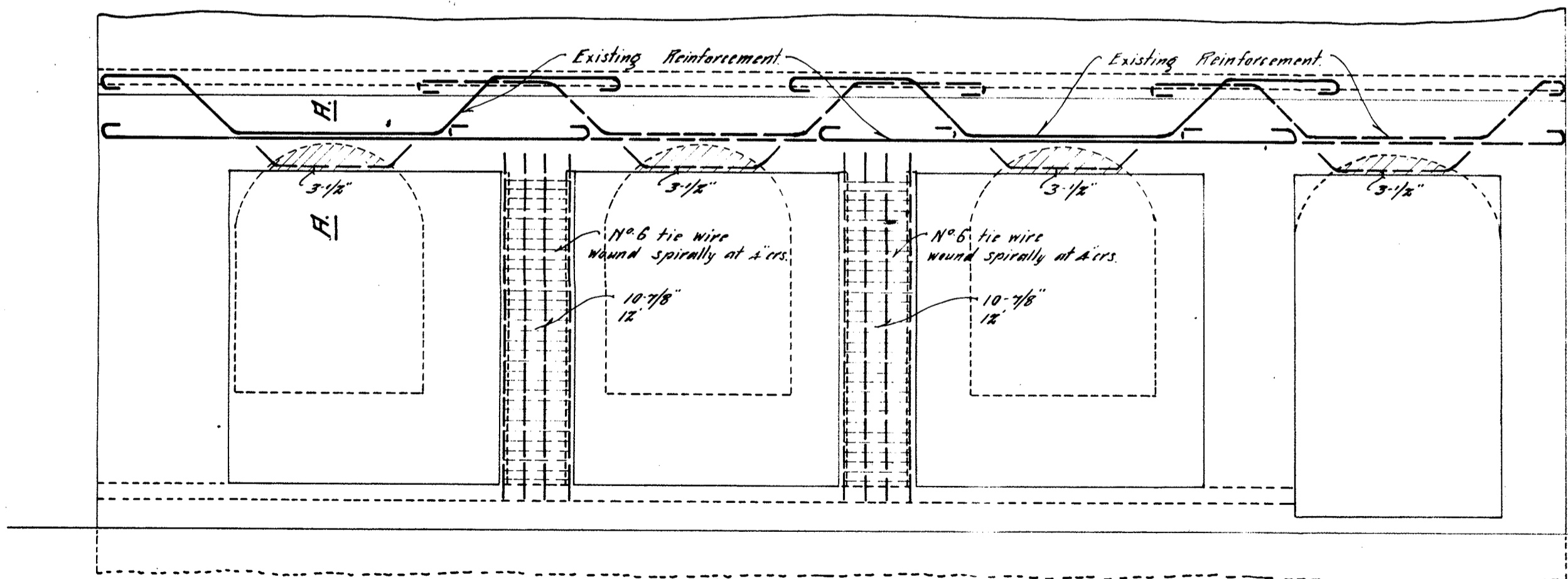
10-7/8" tied at 4" crs. with No. 6 tie wire spirally wound. Bars to fit snug against existing concrete when cut back to dotted line. ENDS of vertical bars set in holes drilled in concrete above and below.

COLUMN SECTION.



3-1/2" bars tied at 6" crs. with No. 6 wire. Ends cranked and set in holes in concrete.

SECTION A-A.



LAMBTON QUAY ELEVATION.

DRAWING No. A.

Scales: 1/4, 1/2 inch to one foot.

ALTERATIONS TO BUILDING LAMBTON QUAY - GREY ST.

FOR THE N. Z. INSURANCE CO.

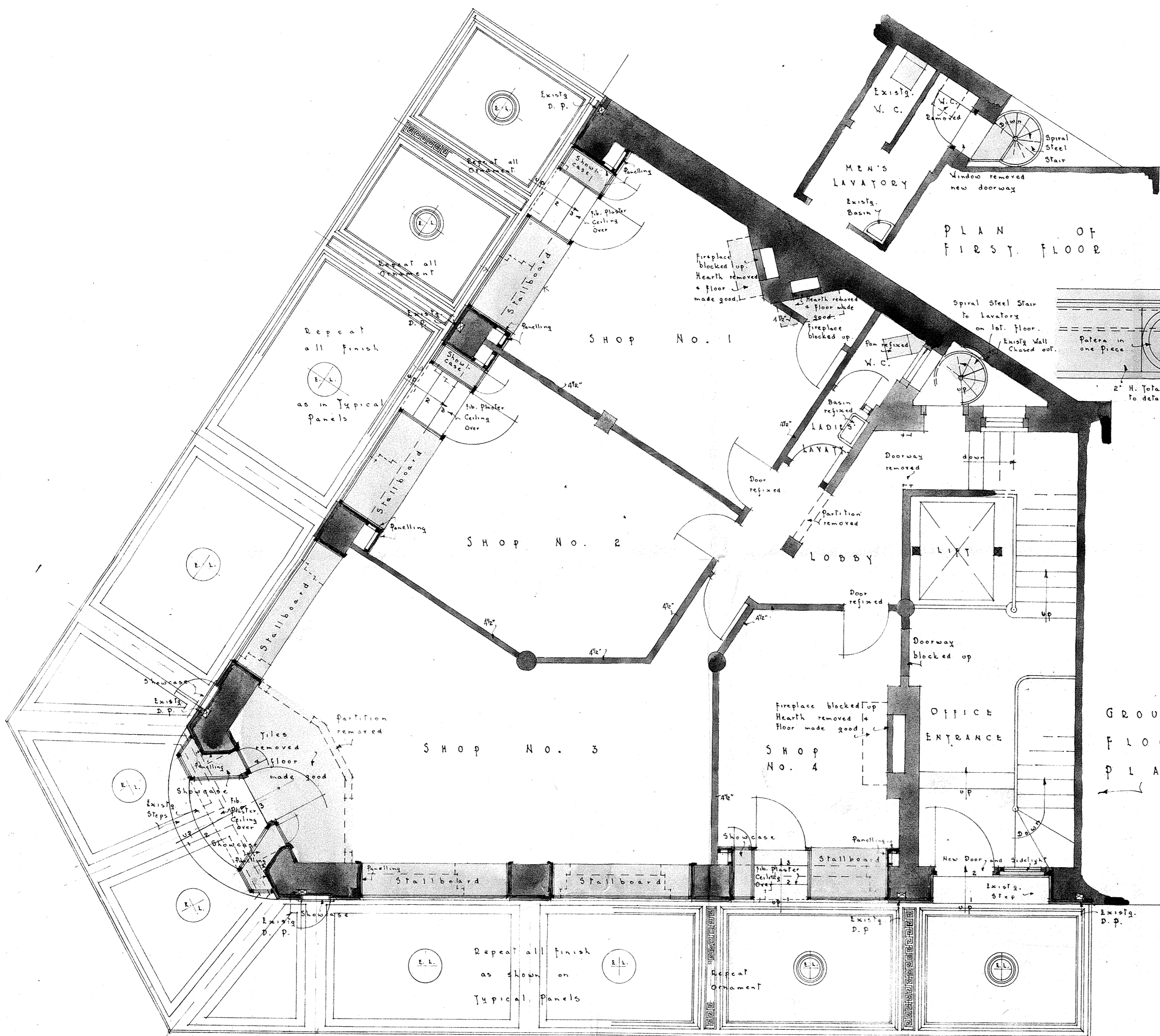
GRAY YOUNG, MORTON & YOUNG.

REG. ARCHITECTS WGN. 23.2.28.

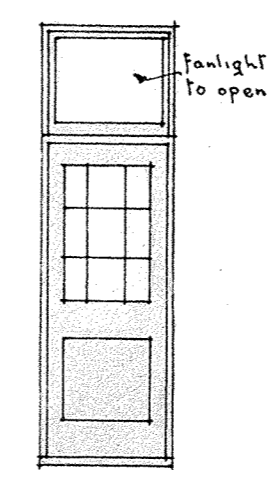
S.T. SILVER M. I. STRUCT. E.

CONSULTING ENGINEER WELLINGTON

Contractors



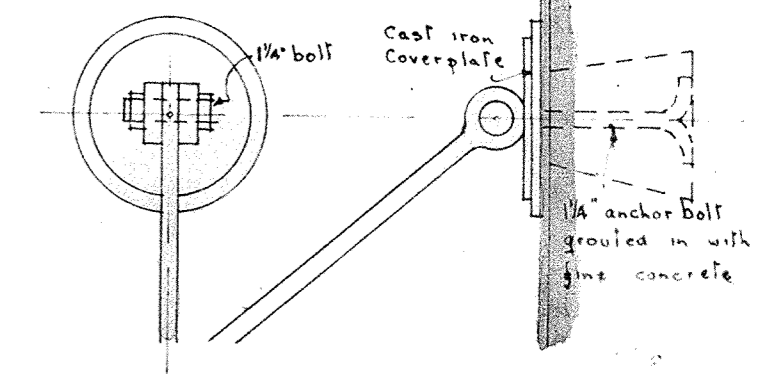
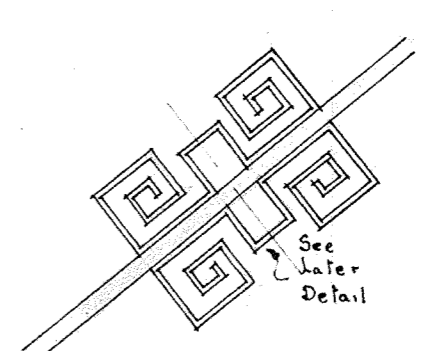
PLAN OF FIRST FLOOR



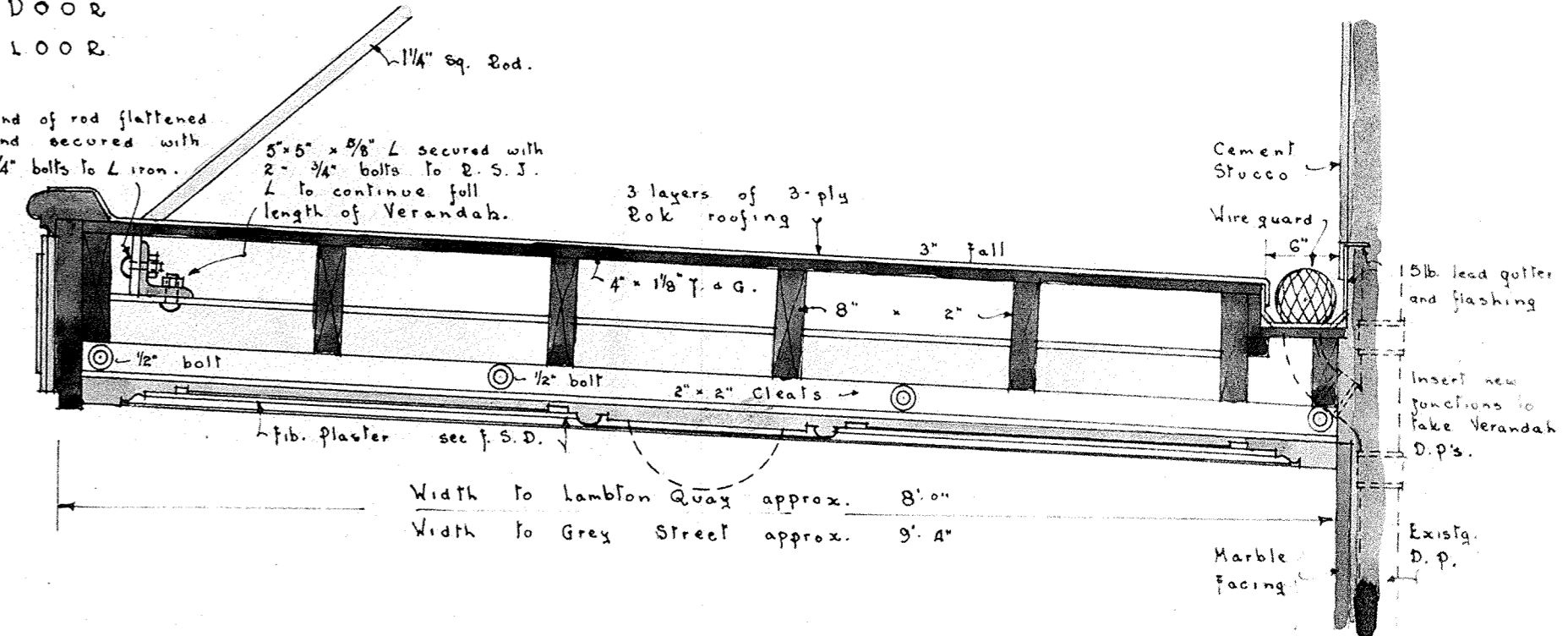
NEW DOOR 1st. FLOOR

End of rod flattened and secured with 3/4" bolts to L iron.

5" x 5" x 3/8" L secured with 2" x 1/4" bolts to R.S.J. L to continue full length of Verandah.



COVER PLATE ETC.



DETAILS OF VERANDAH 1" TO 1" 0"

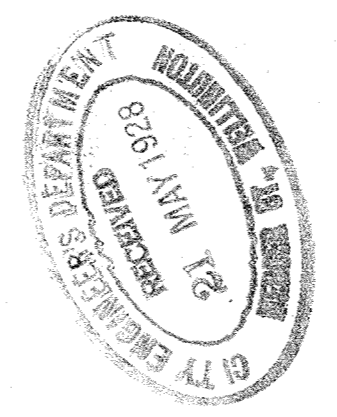
ALTERATIONS TO BUILDING LAMBTON QUAY & GREY ST. FOR THE N. Z. INSURANCE COY.

DRAWING No. 1 1/4" & 1" TO 1 FOOT.

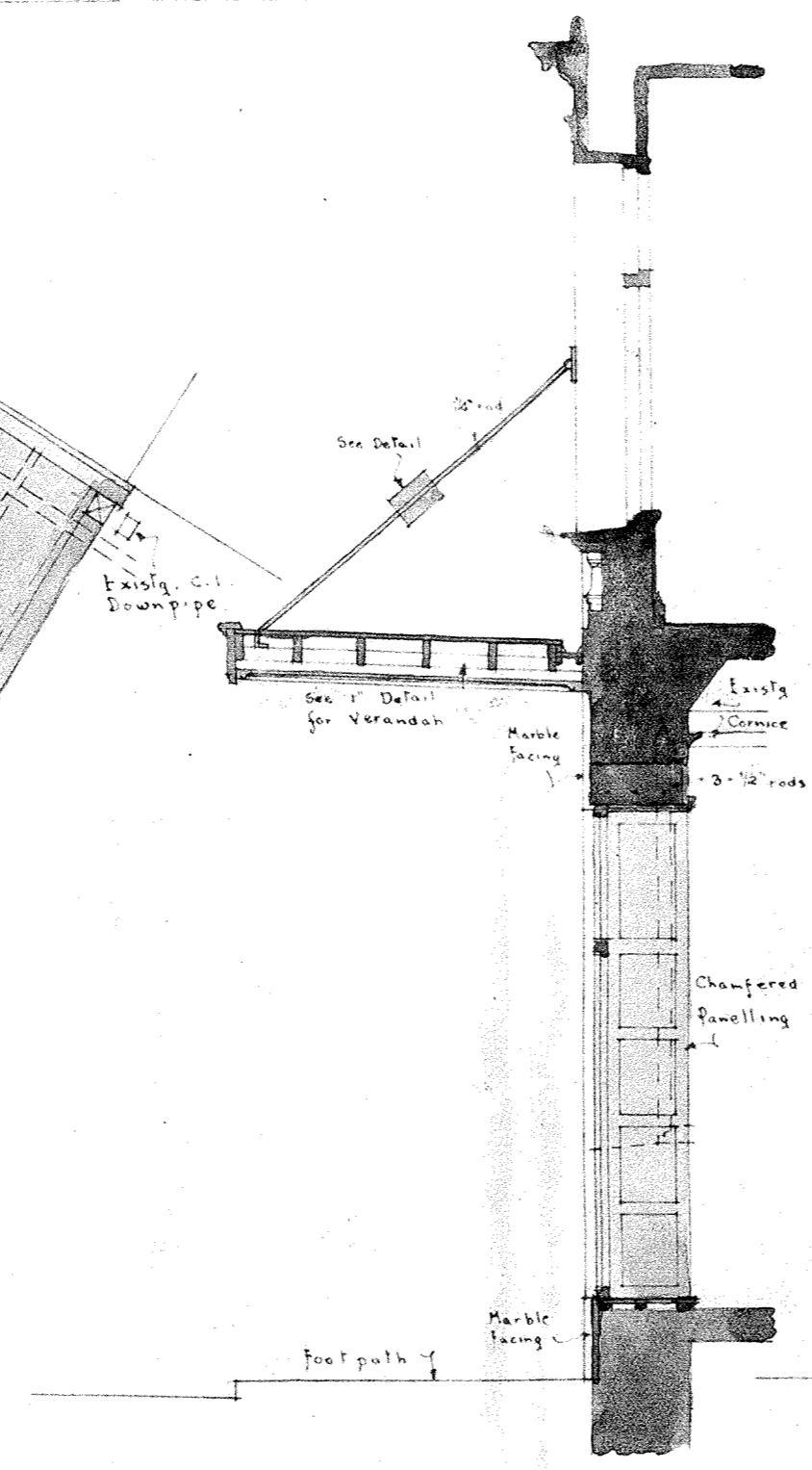
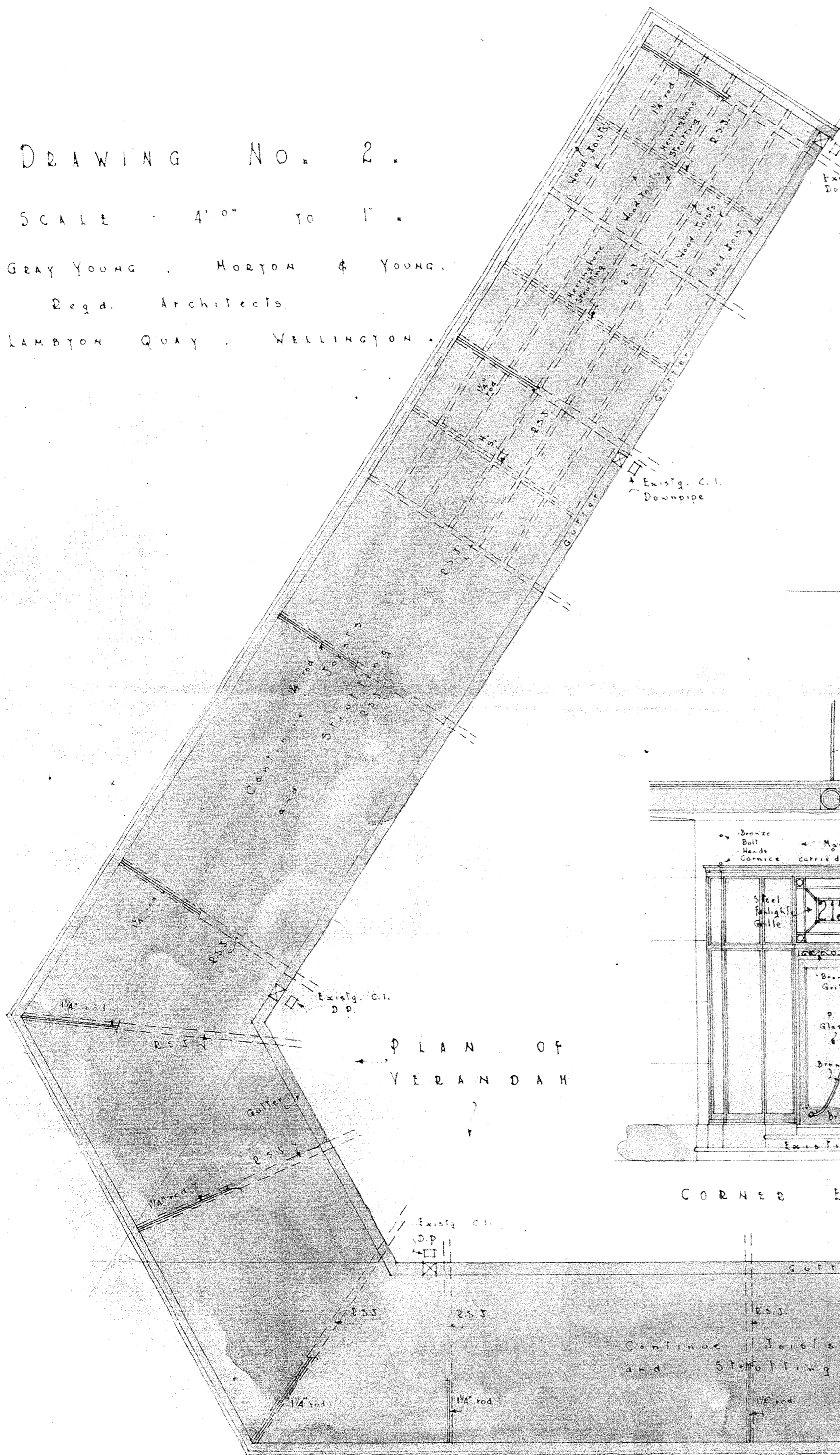
GRAY YOUNG, MORTON & YOUNG, Regd. Architects, LAMBTON QUAY, WELLINGTON



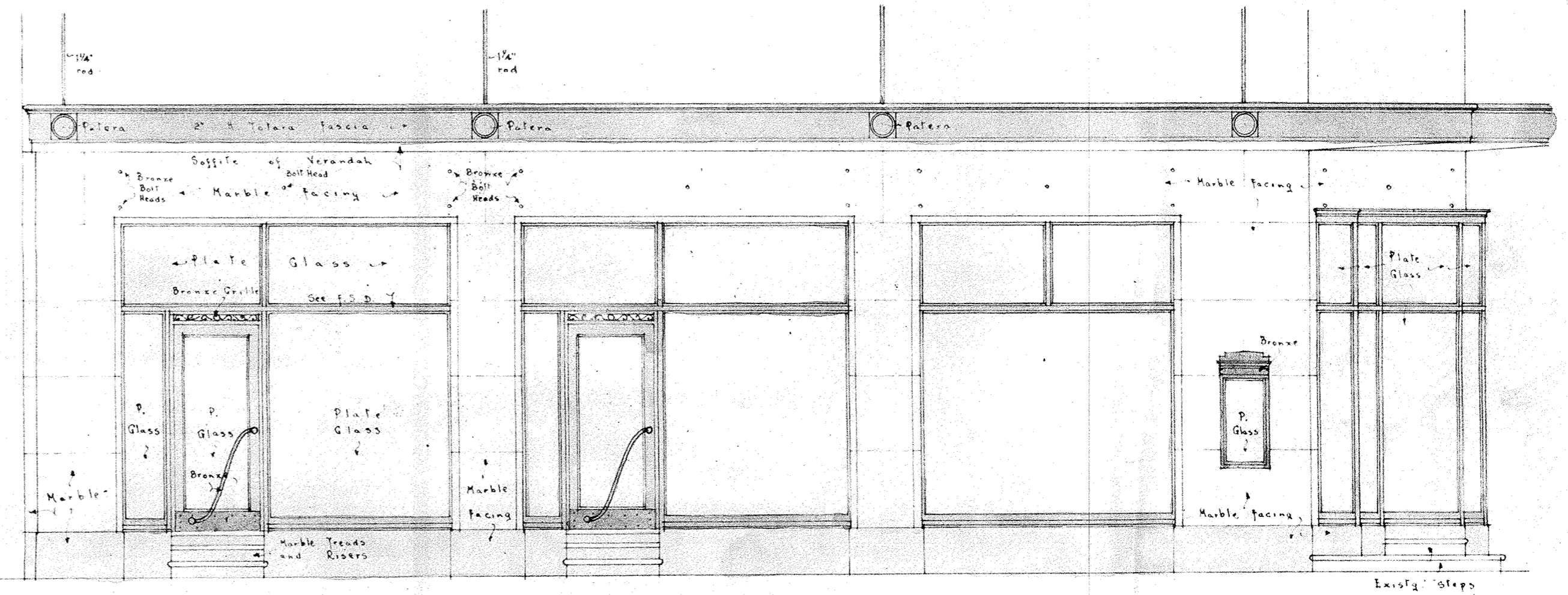
Council



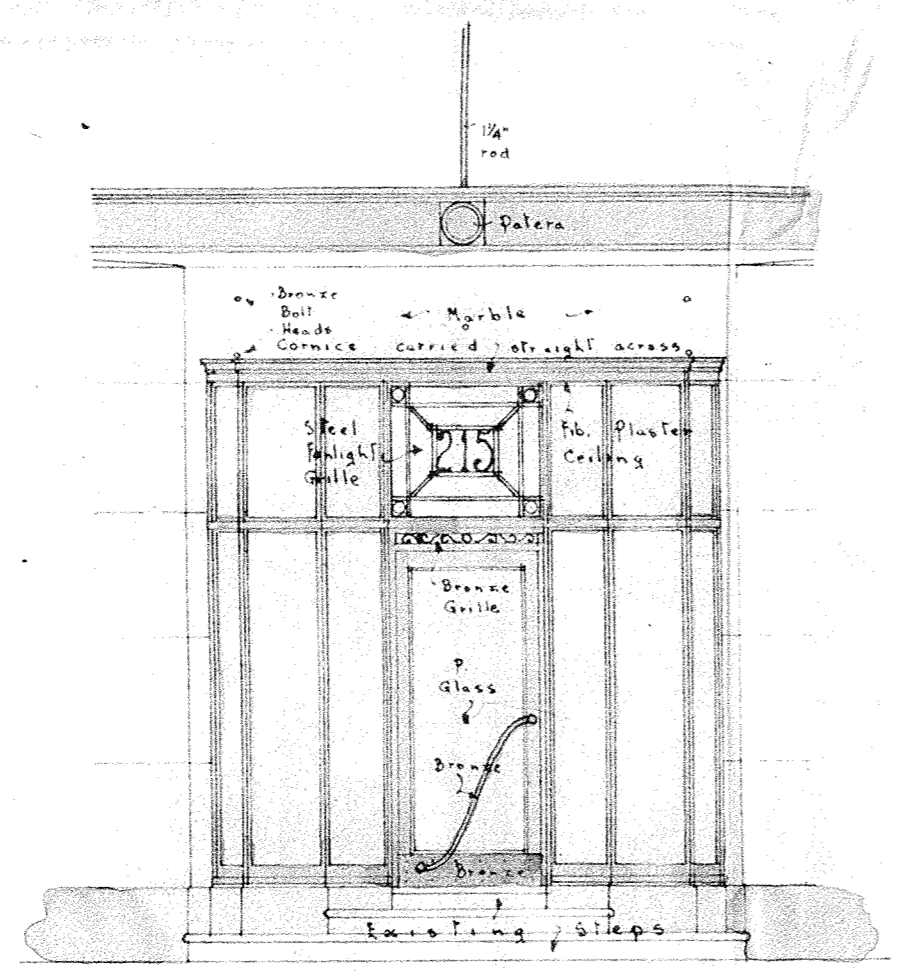
DRAWING NO. 2.
SCALE 4" 0" TO 1"
GRAY YOUNG, HORTON & YOUNG,
Regd. Architects
LAMBTON QUAY, WELLINGTON.



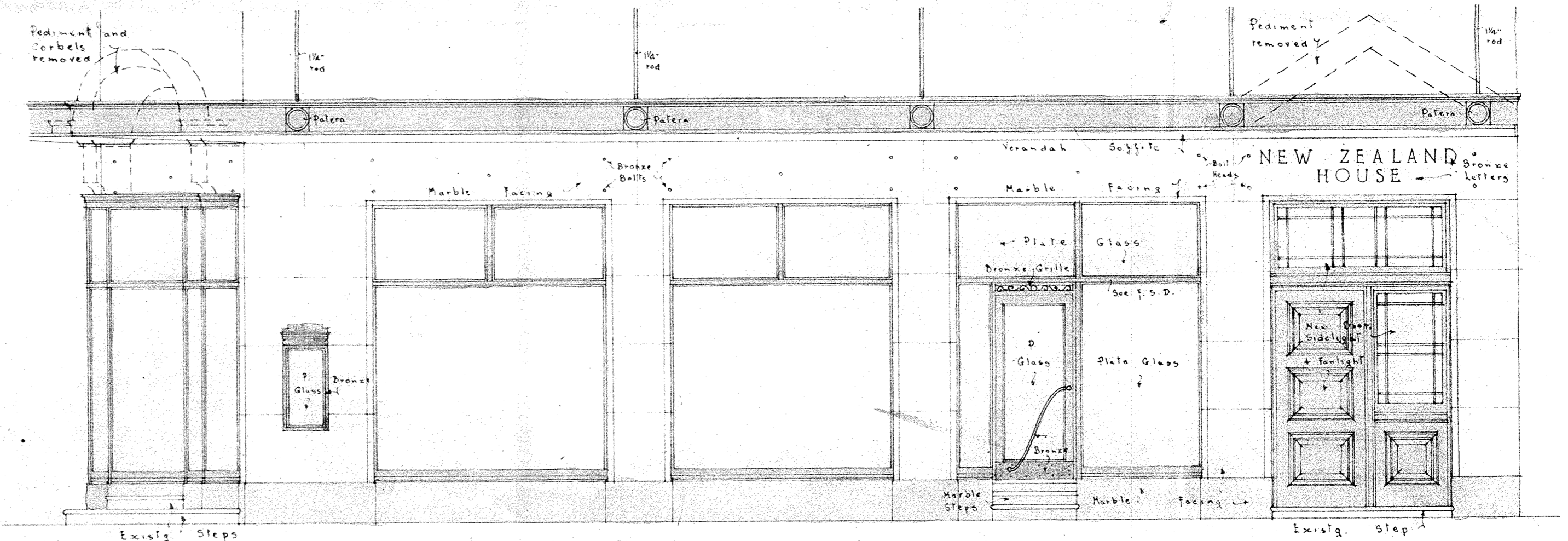
SECTION A-A



GREY ST. ELEVATION

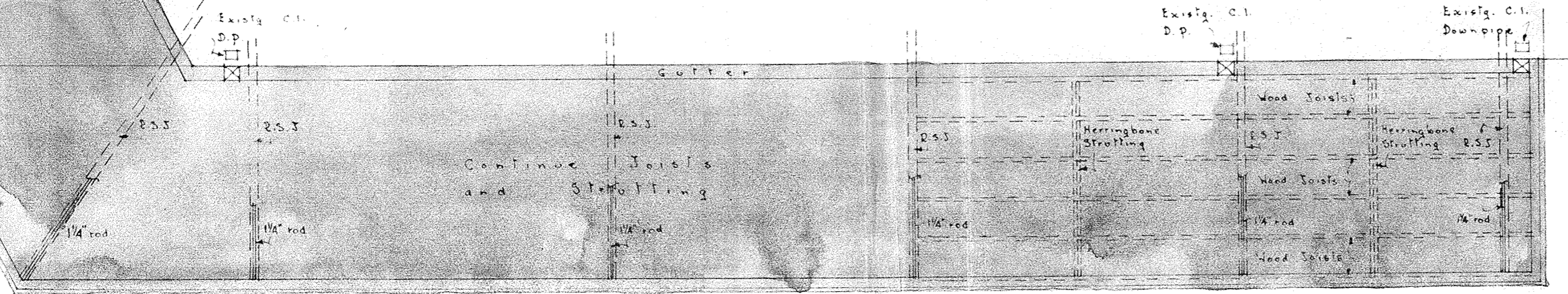


CORNER ELEVATION



LAMBTON QUAY ELEVATION

PLAN OF VERANDAH



ALTERATIONS TO BUILDING
LAMBTON QUAY & GREY ST.
FOR THE N. Z. INSURANCE COY.