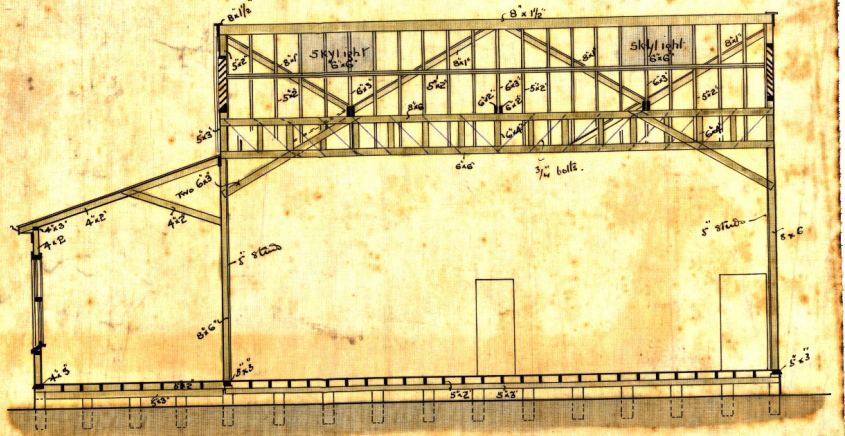


St. Paul's School Room, Sydney St.
additions

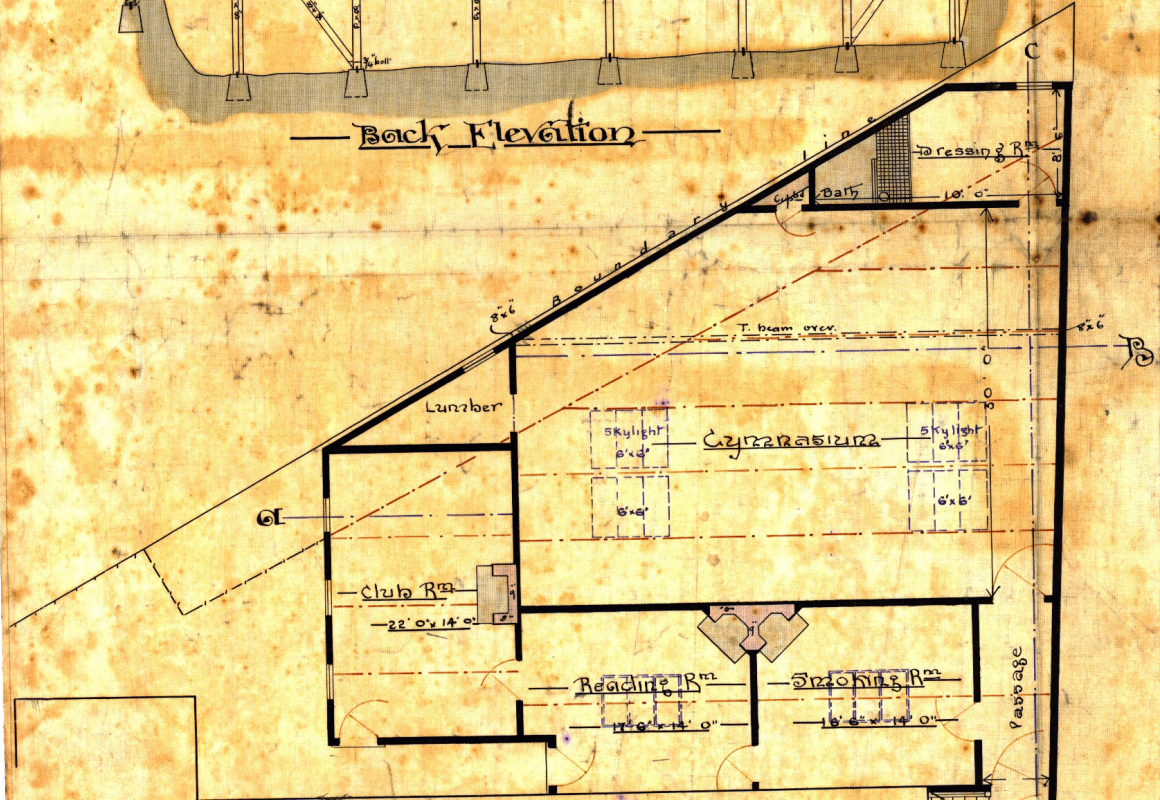
Scale 8 feet to 1 inch.



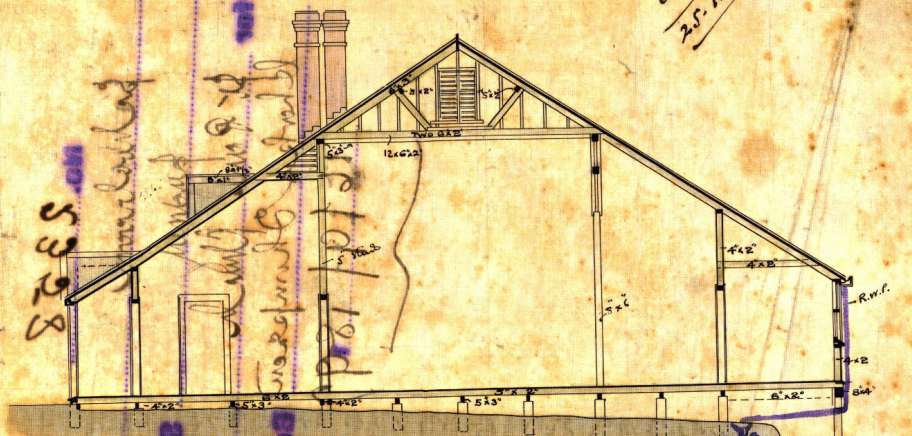
— Back Elevation —



— Section A.B. —



— School Rooms Plan —



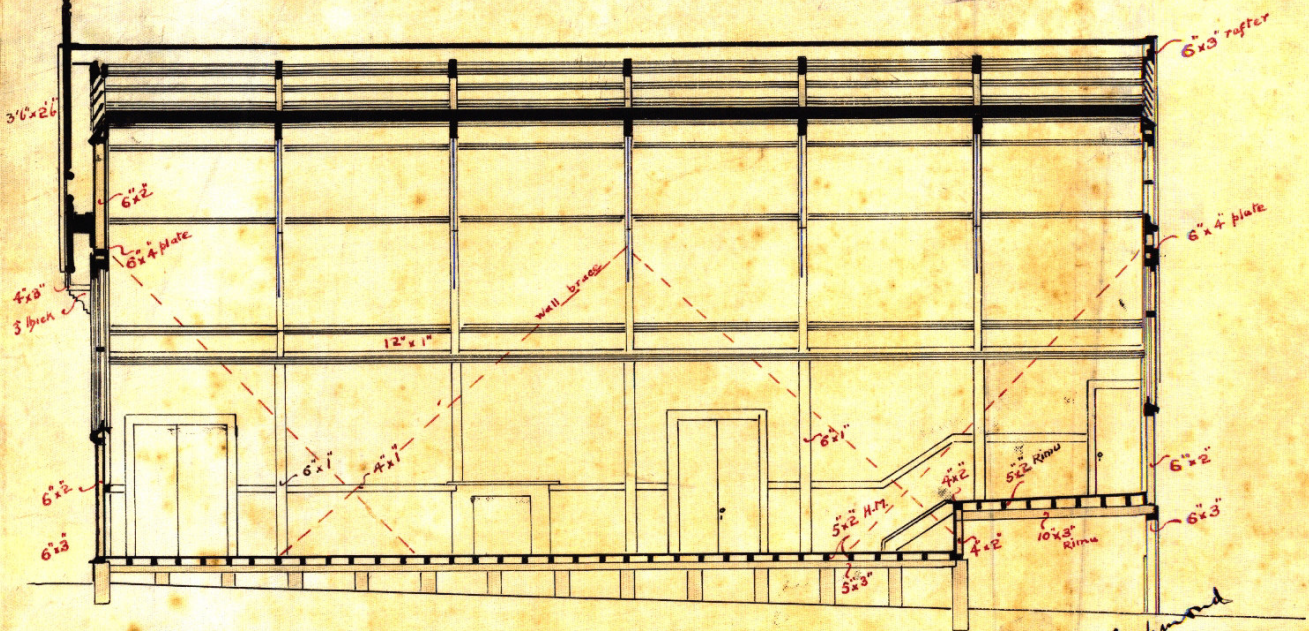
— Section C.D. —

Chas. Higford Richmond
 Archt.
 Wellington
 25. 11. 98

200

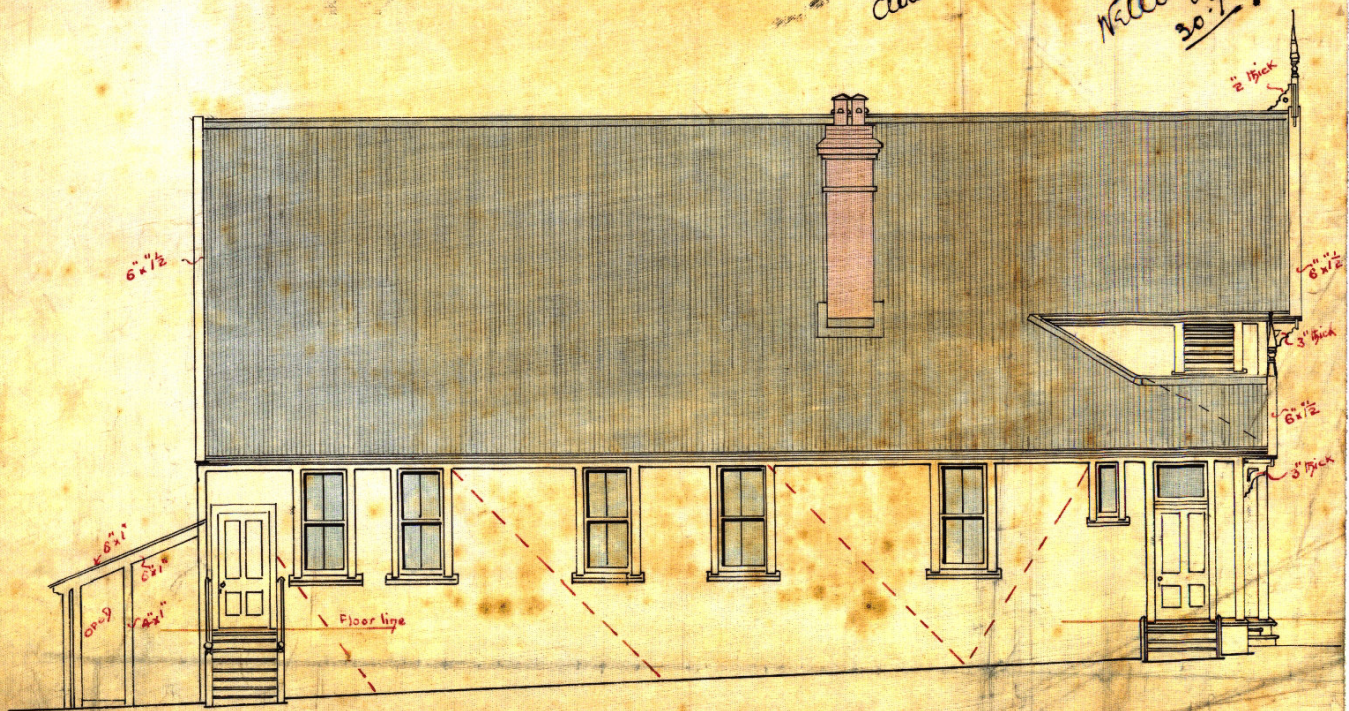
St Pauls Church School Room

Scale 1/4" = 1' 1" height.



Longitudinal Section

Clare & Fitzgerald Richmond
Per 1885
Architects
Wellington
30.7.97



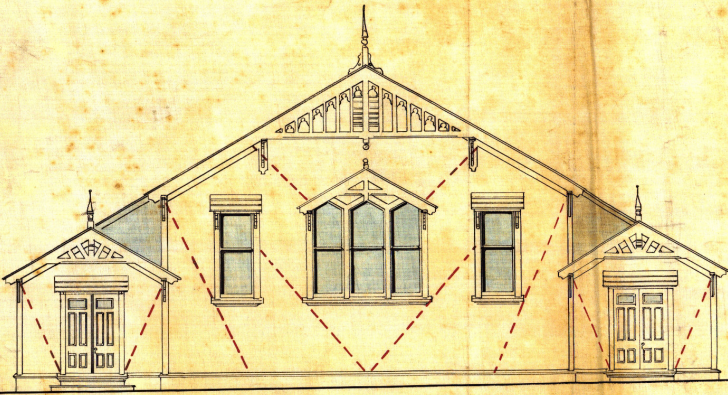
North Elevation

Clyde

ST PAULS CHURCH SCHOOL ROOM.

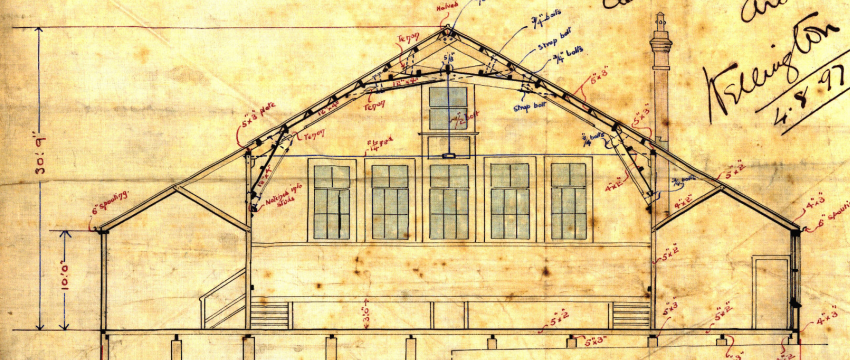
WELLINGTON.

SCALE 8 FEET TO THE INCH

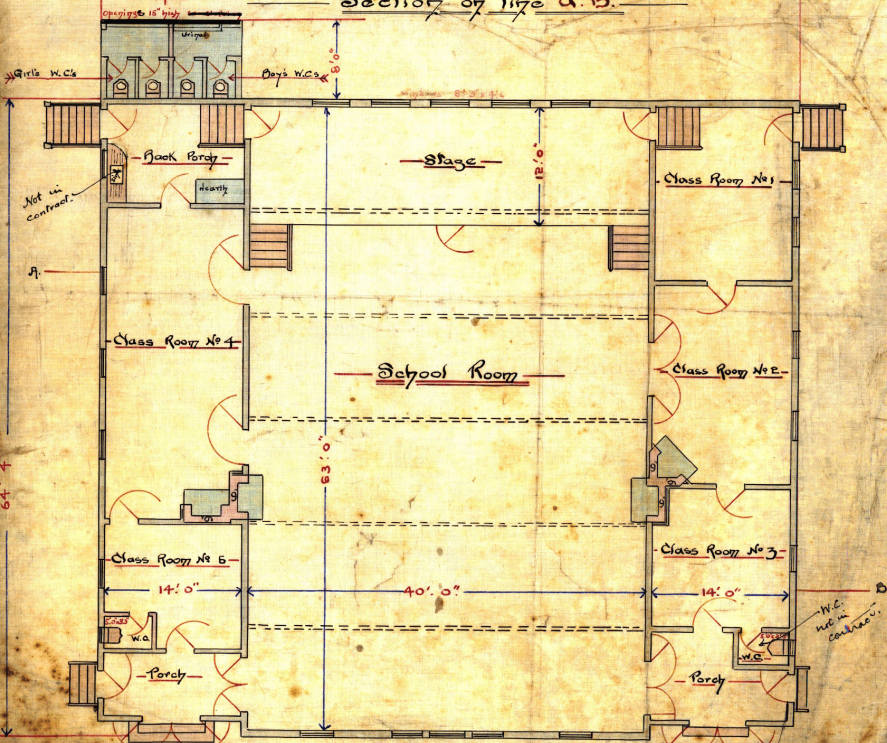


West Elevation

*Clear St. Street Richmond
Pr. 853.
Architects
Wellington
4.8.97*



Section of size "A.B."



PLAN

C.G.M.