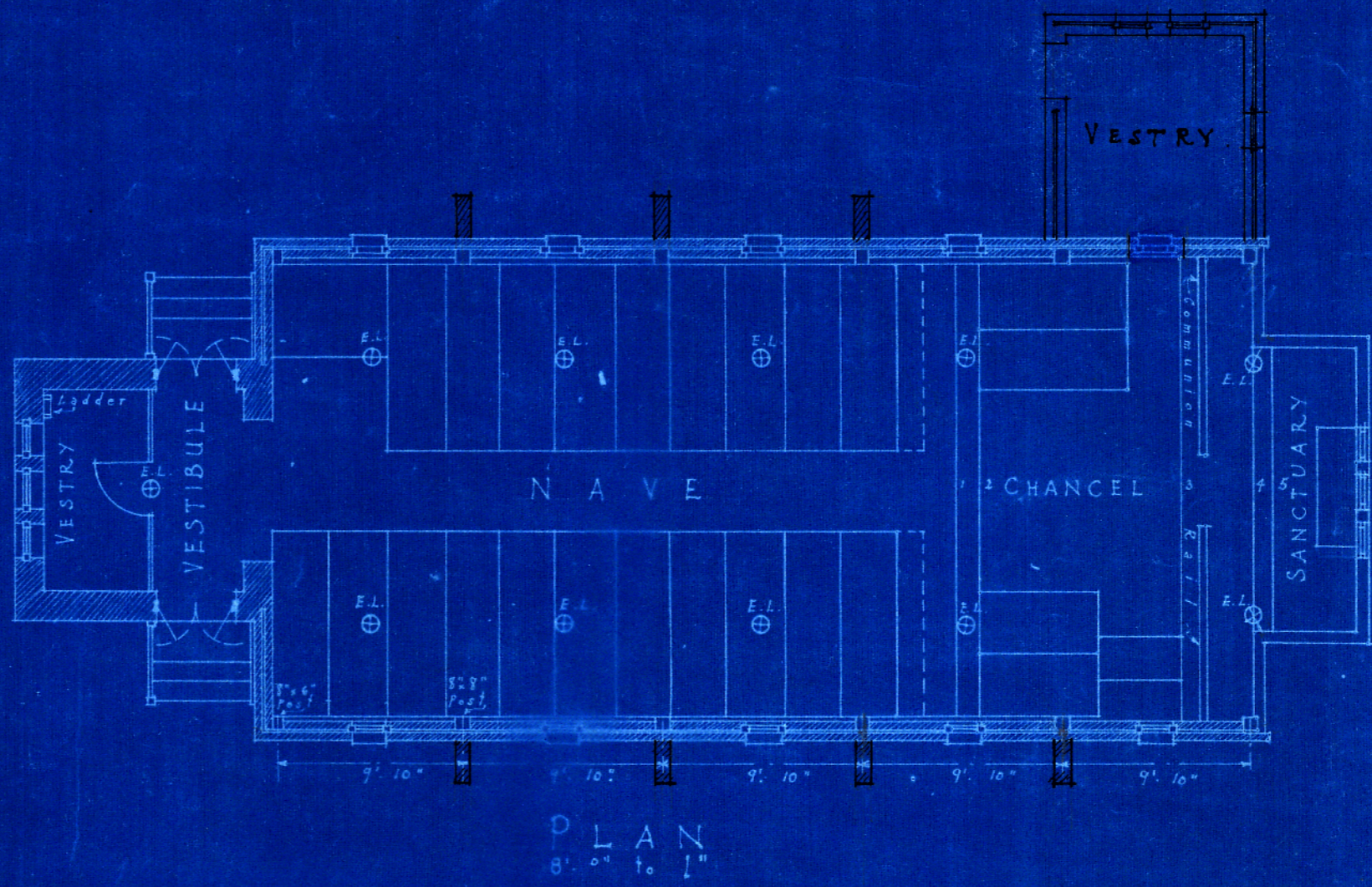
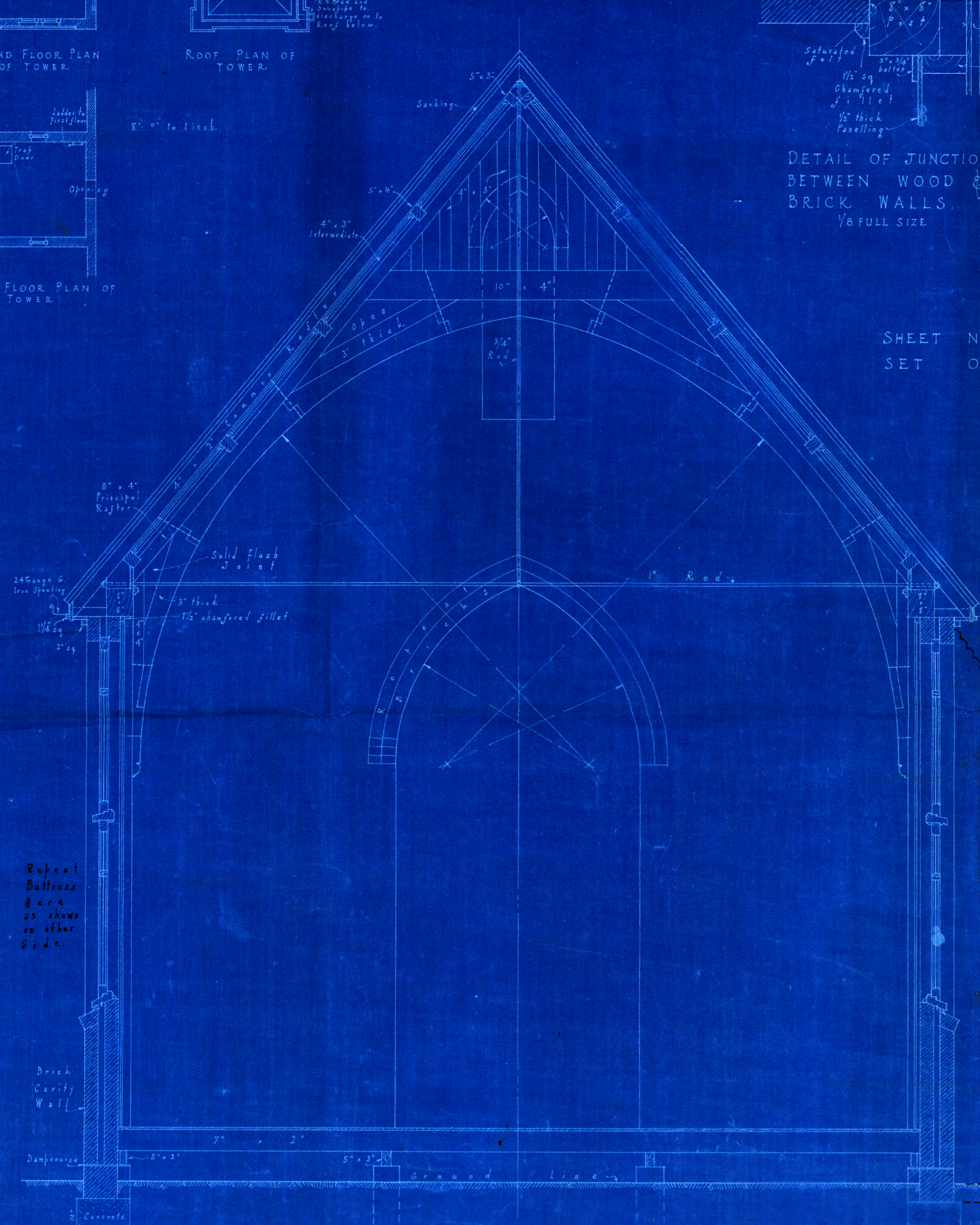
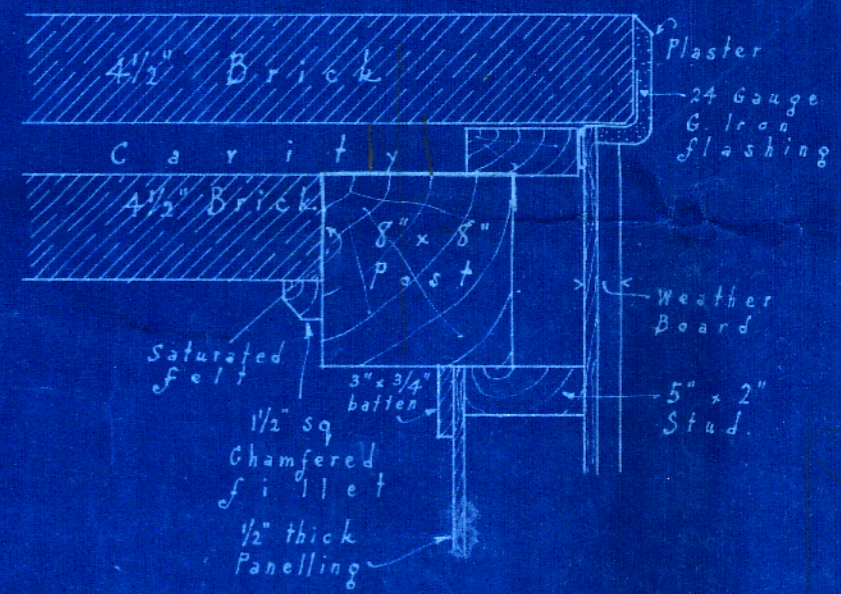
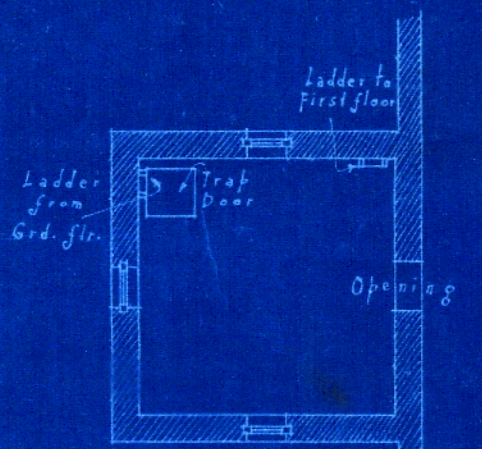
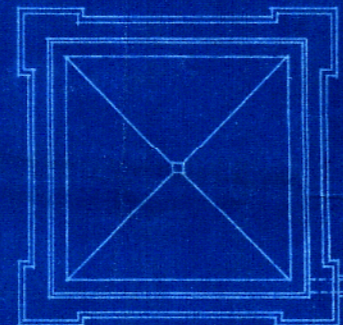
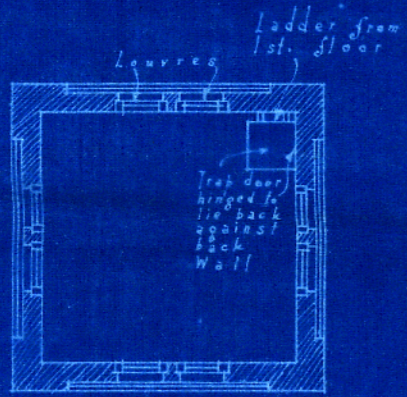


ALL
SAINTS
CHURCH
DUNEDIN



CLERE & F.R.I.B.A.
CLERE & F.N.Z.I.A.
Architects
Wellington
New Zealand
18-1-27.



SHEET NO 1
SET OF 5

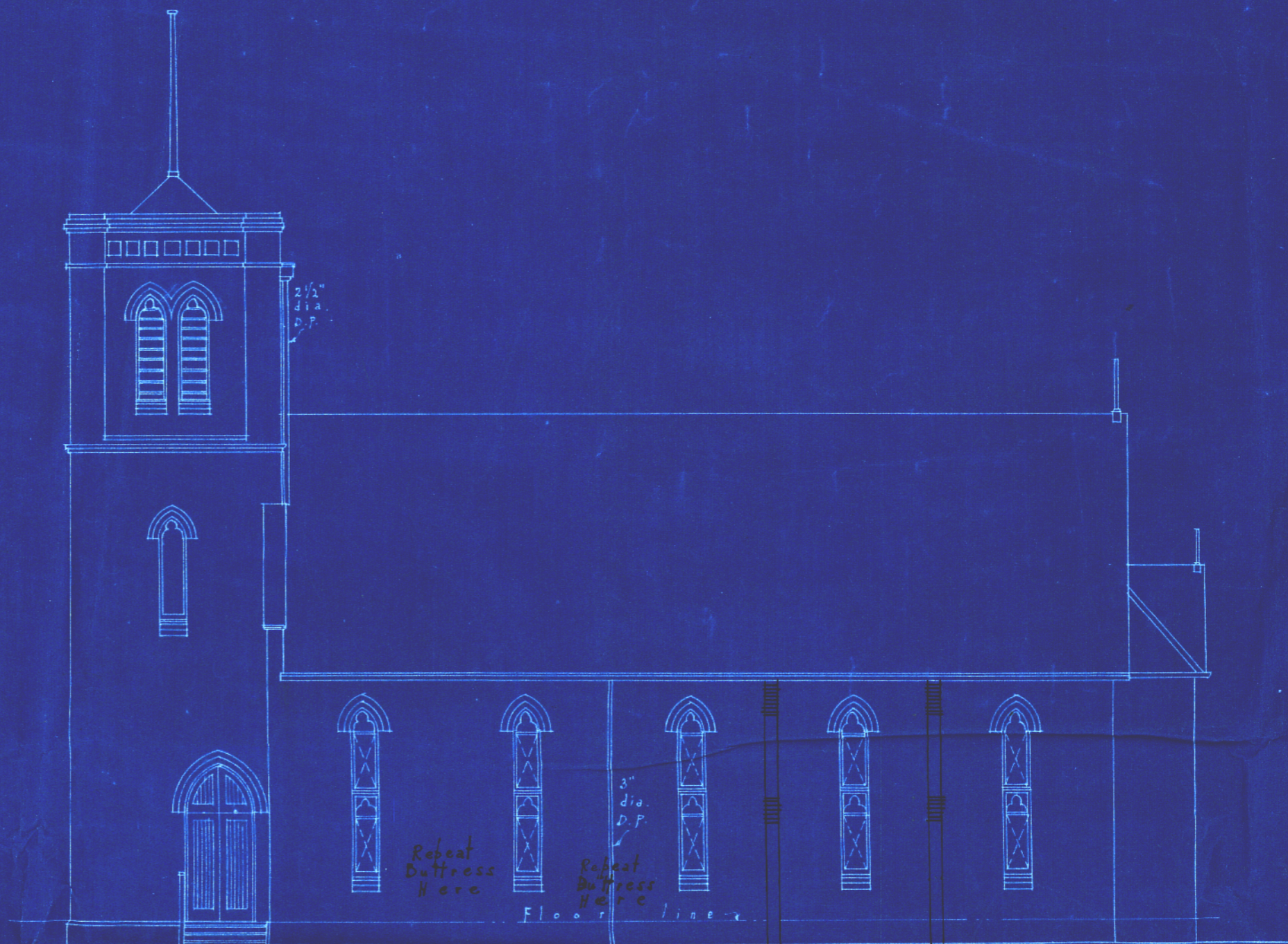


Repeat
Buttress
Here
as
shown
on
other
side.

*This is the same as the original reference to in the
Contract signed by me & dated 27/1/28 Wm. Husband*

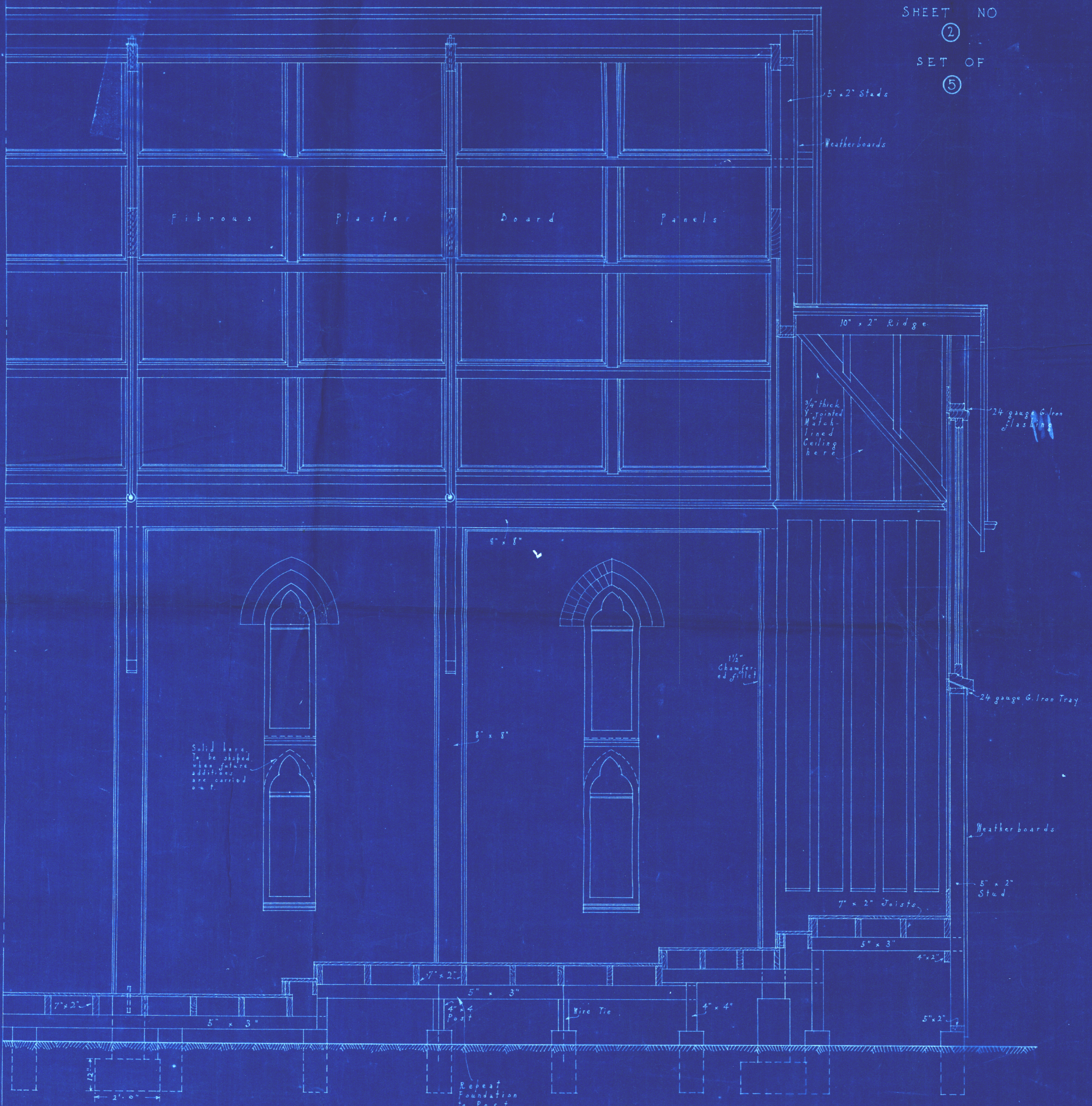
ALL
SAINTS
A H A R A H
N G H I O

CLERE F.R.I.B.A.
CLERE F.N.Z.I.A.
Architects.
Wellington
New Zealand
11-1-28.



SIDE ELEVATION
BOTH SIDES THE SAME
8 feet to 1 inch.

SHEET NO
②
SET OF
⑤



PART LONGITUDINAL SECTION HALF INCH SCALE

*The roof the drawings refer to in
the section was 12 ft high
and was in
Woolworth Street.*

*Solid here
to be stopped
when future
additions
are carried
out.*

1/2\"/>

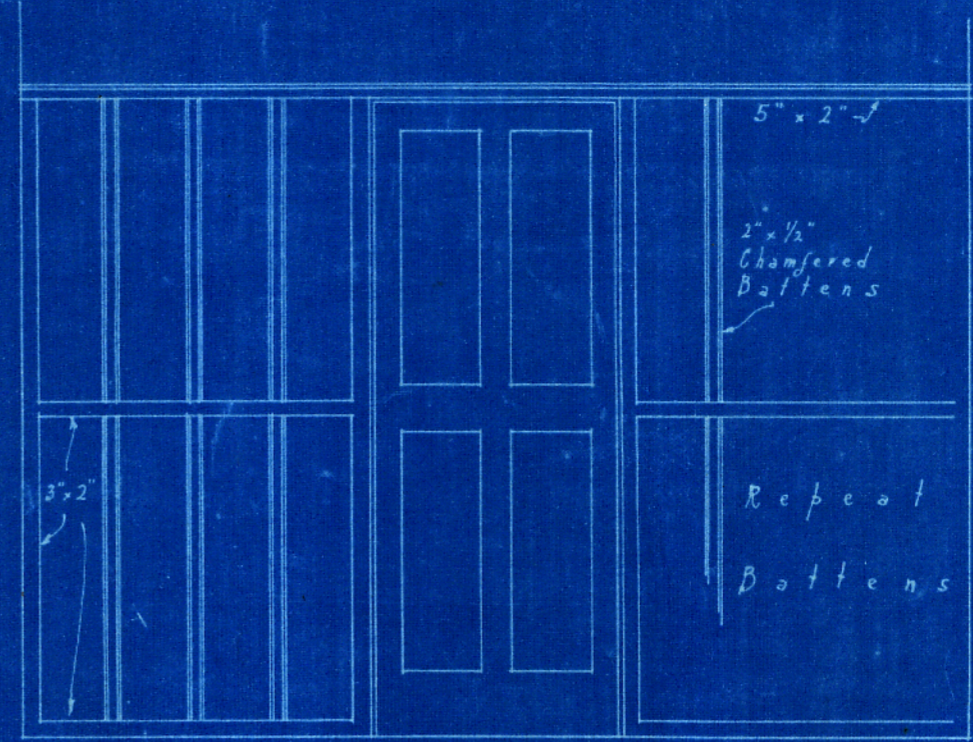
Wire Tie

*Repeat
Foundation
to Post.*

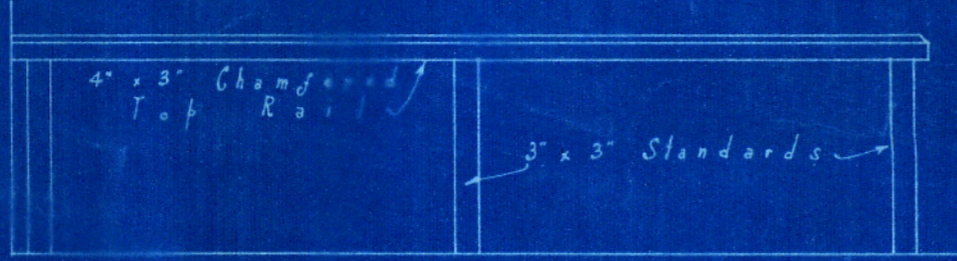
ALL
SAINTS
CHURCH
NGAIO

CLERE F.R.I.B.A.
CLERE F.N.Z.I.A.
Architects
Wellington
New Zealand
18-1-28.

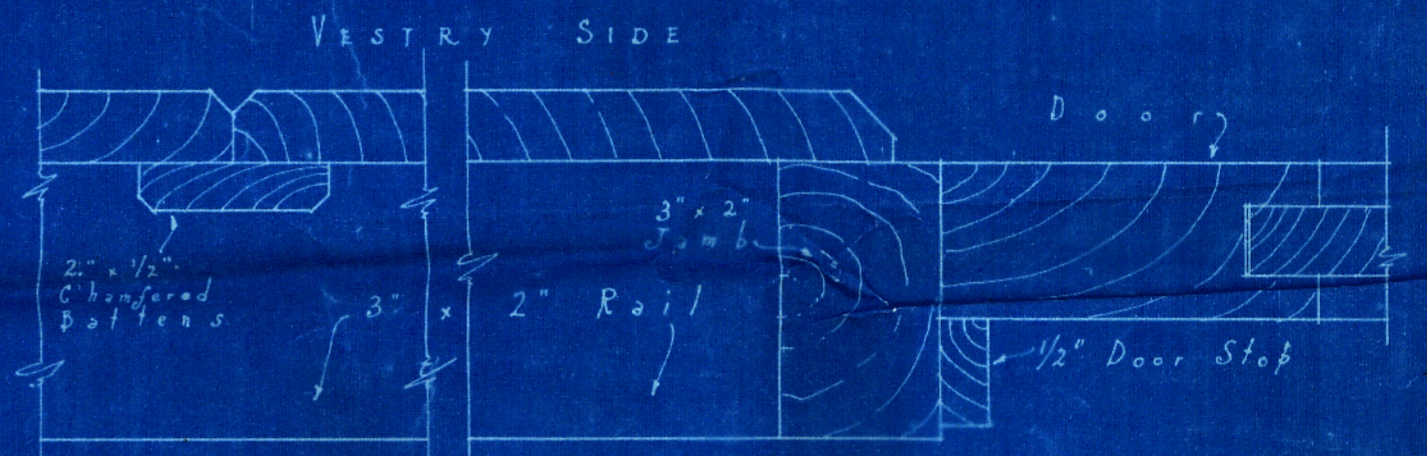
SHEET NO ③
SET OF ⑤



VESTIBULE ELEVATION
1/2 to 1 foot.

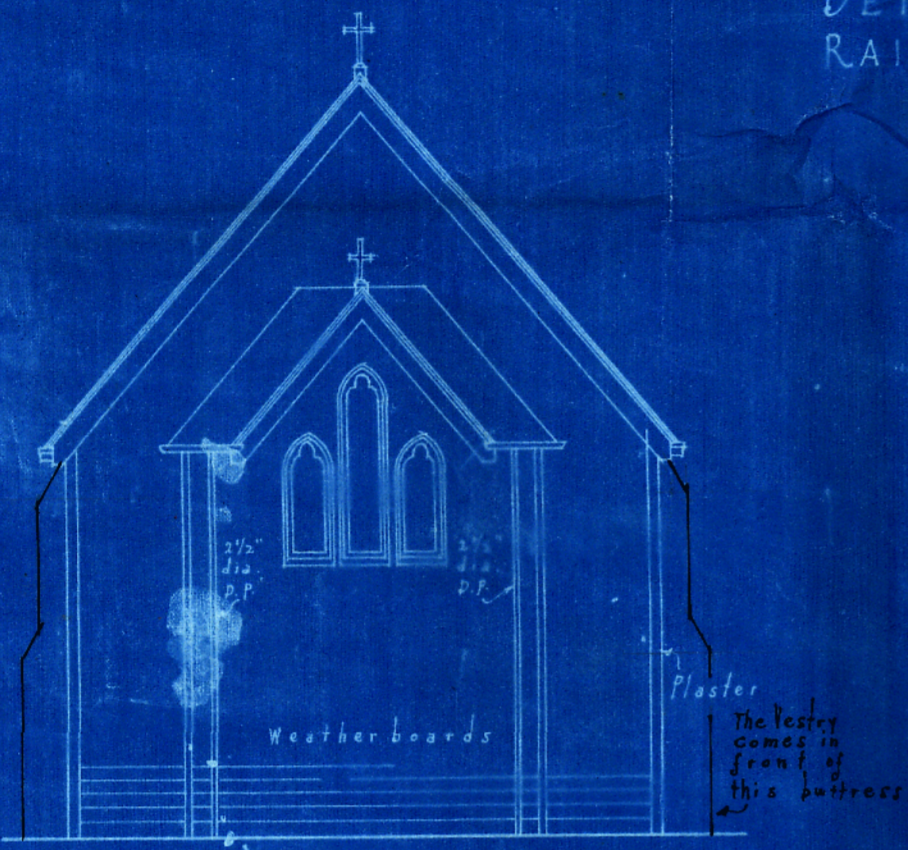


DETAIL OF COMMUNION
RAIL. 1/2 to 1 foot.



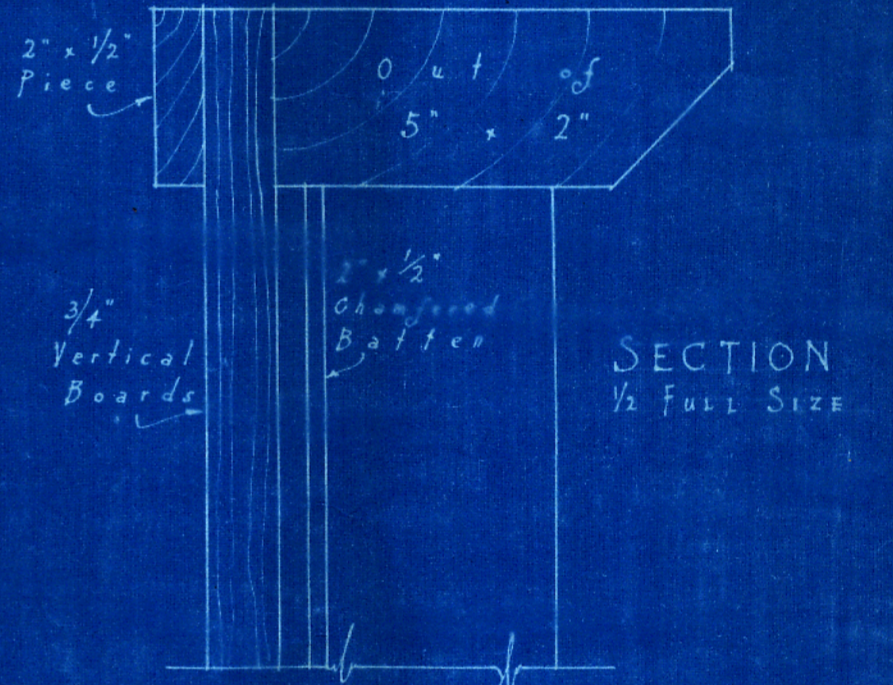
VESTIBULE SIDE
DETAIL AT JAMB

PLAN
1/2 FULL SIZE

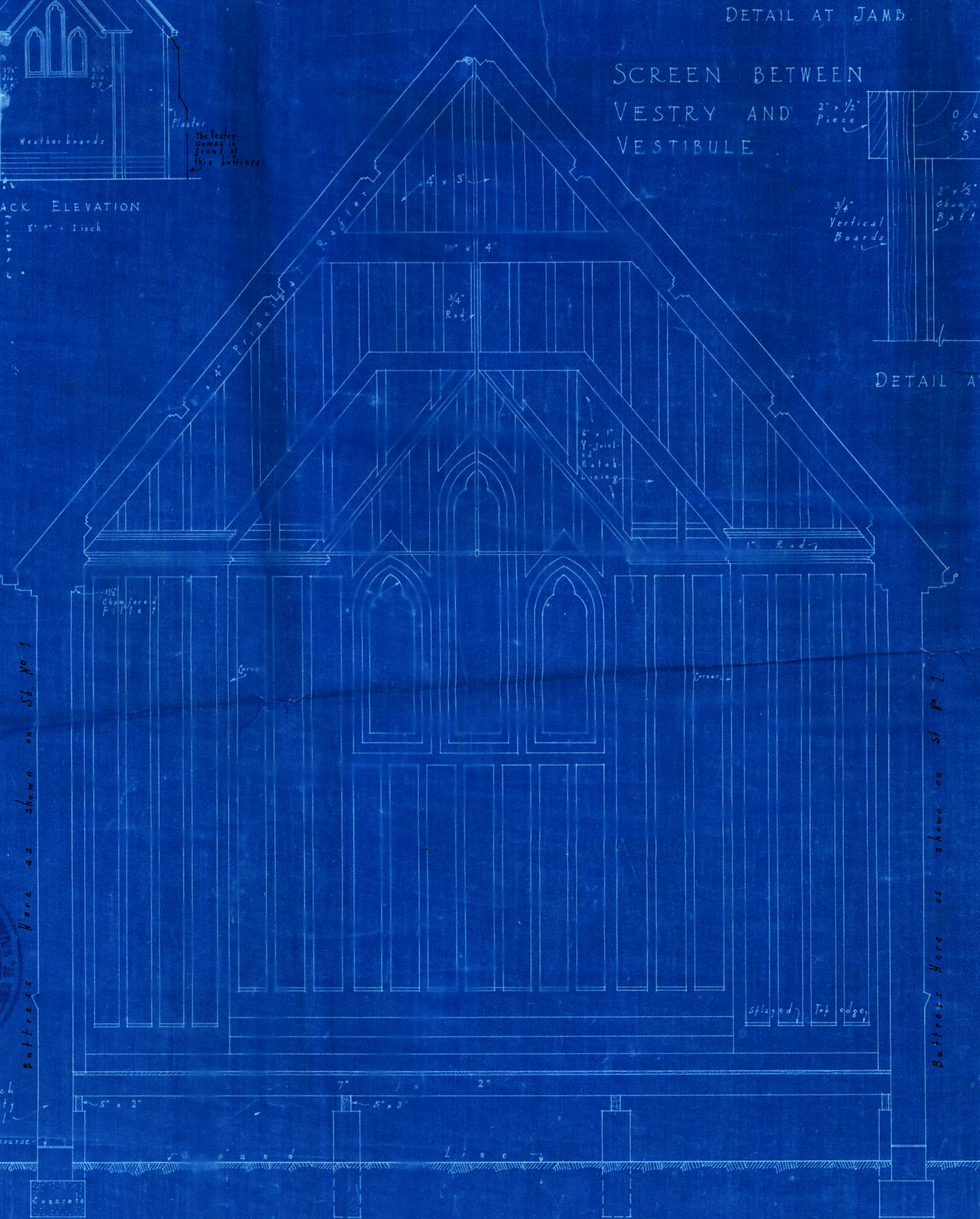


BACK ELEVATION
1/2 to 1 inch

SCREEN BETWEEN
VESTRY AND
VESTIBULE



DETAIL AT TOP



SECTION LOOKING EAST
HALF INCH SCALE

Concrete floor as shown on St. No 1



Buttress here as shown on St. No 1

Buttress here as shown on St. No 1.