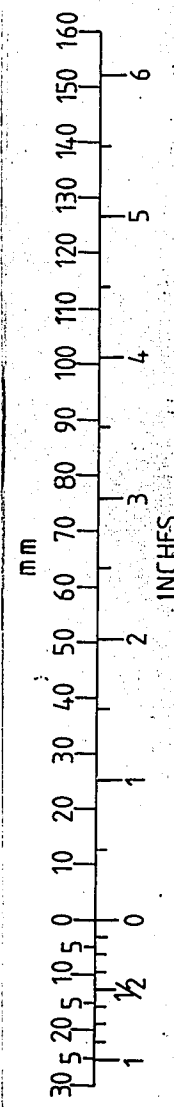


WELLINGTON CITY CORPORATION

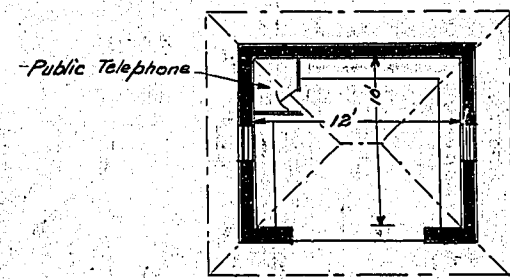
CITY ENGINEERS DEPARTMENT

- MOVING TRAMWAY WAITING SHED - SEFTON ST -

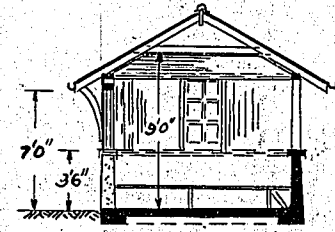
Date of photography:  
9-4-84



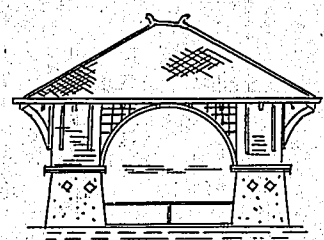
NOTE  
Photographed at reduced scale



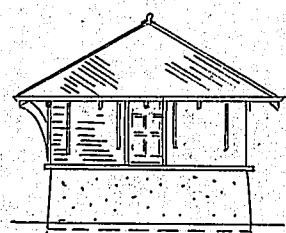
- PLAN -



- SECTION -

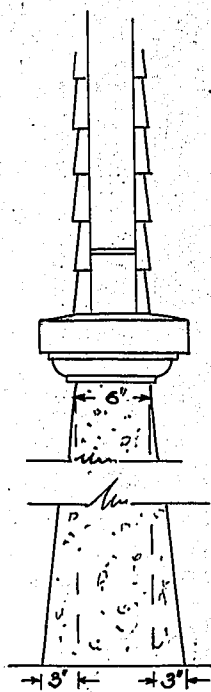


- FRONT ELEVATION -

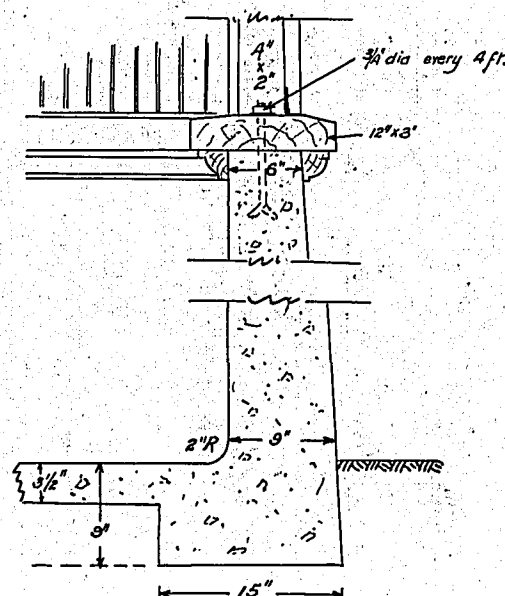


- SIDE ELEVATION -

- SCALE: 8 FEET TO 1 INCH -

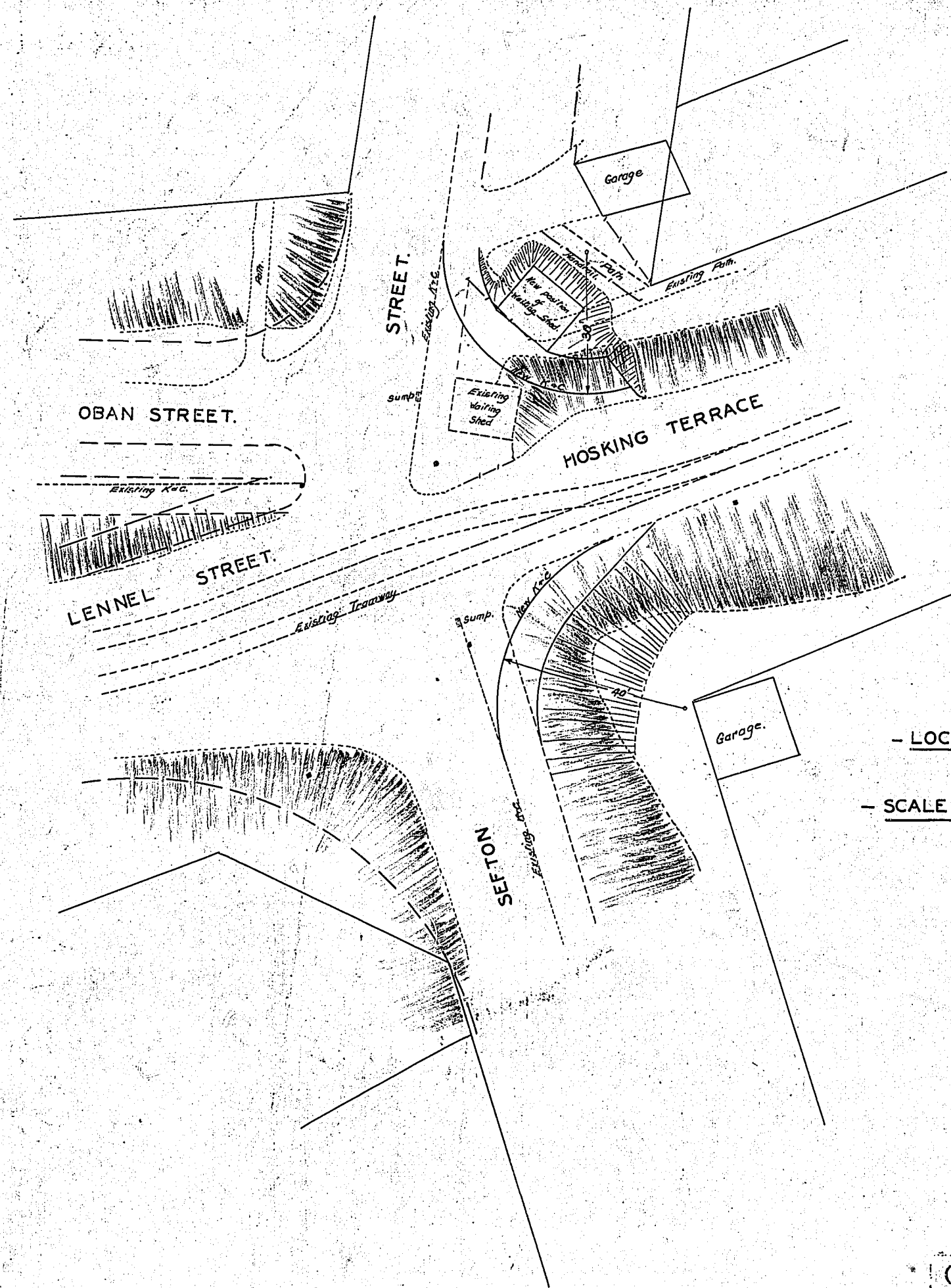


- WALL AT ENTRANCE -



- SECTION THROUGH WALL -

- SCALE: 1 INCH TO 1 FOOT -



- LOCALITY PLAN -

- SCALE: 20 FEET TO 1 INCH -

CITY ENGINEER'S DEPT.	
Master Drawing No. 4937	
DESIGNED BY	
DRAWN BY	1/1/84
CHECKED BY	
APPROVED BY	
REF. No.	
DESIGNED BY	
CHECKED BY	
APPROVED BY	
GEO. A. HARRIS M. Inst. C.E. CITY ENGINEER	