

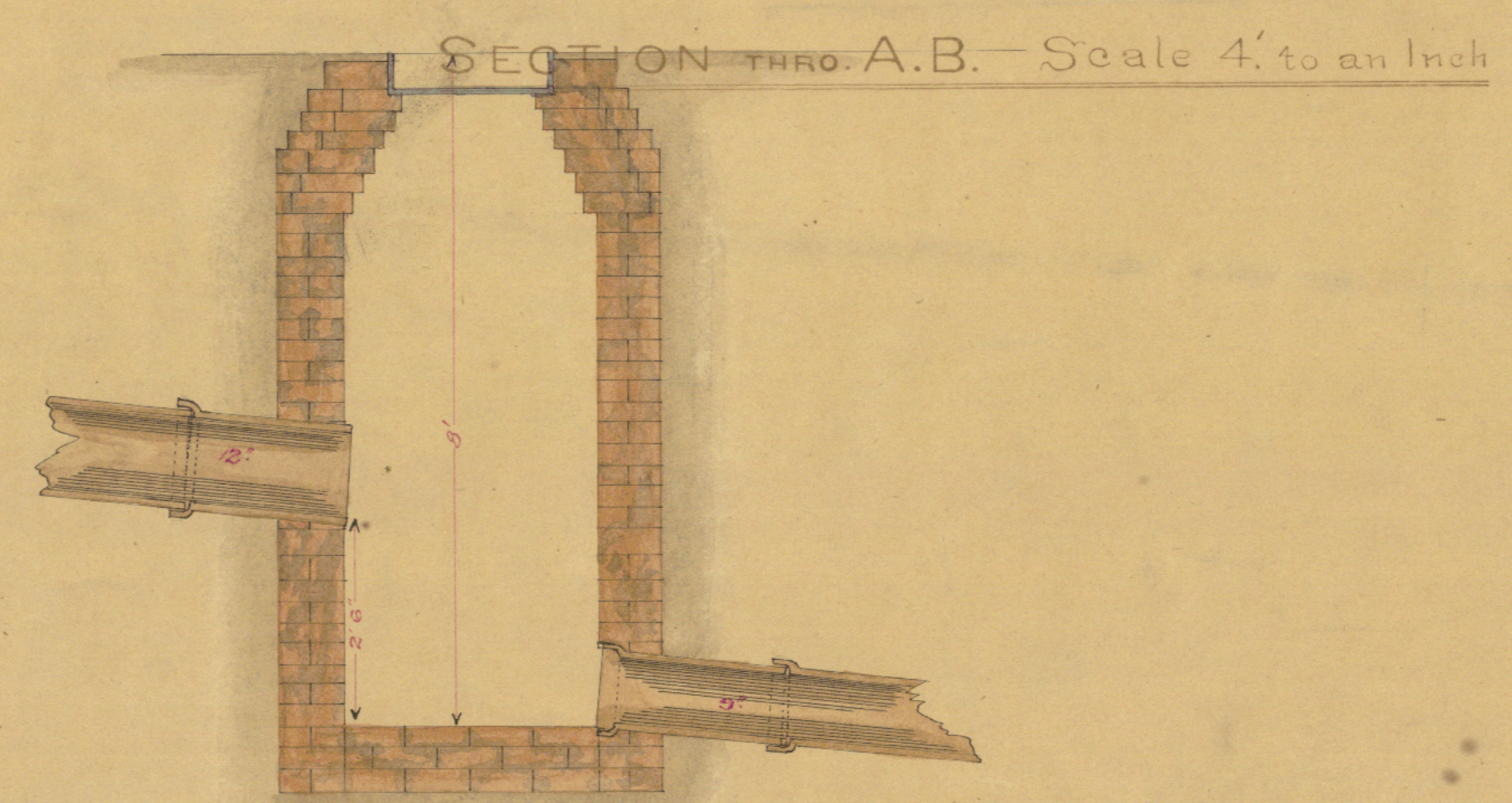
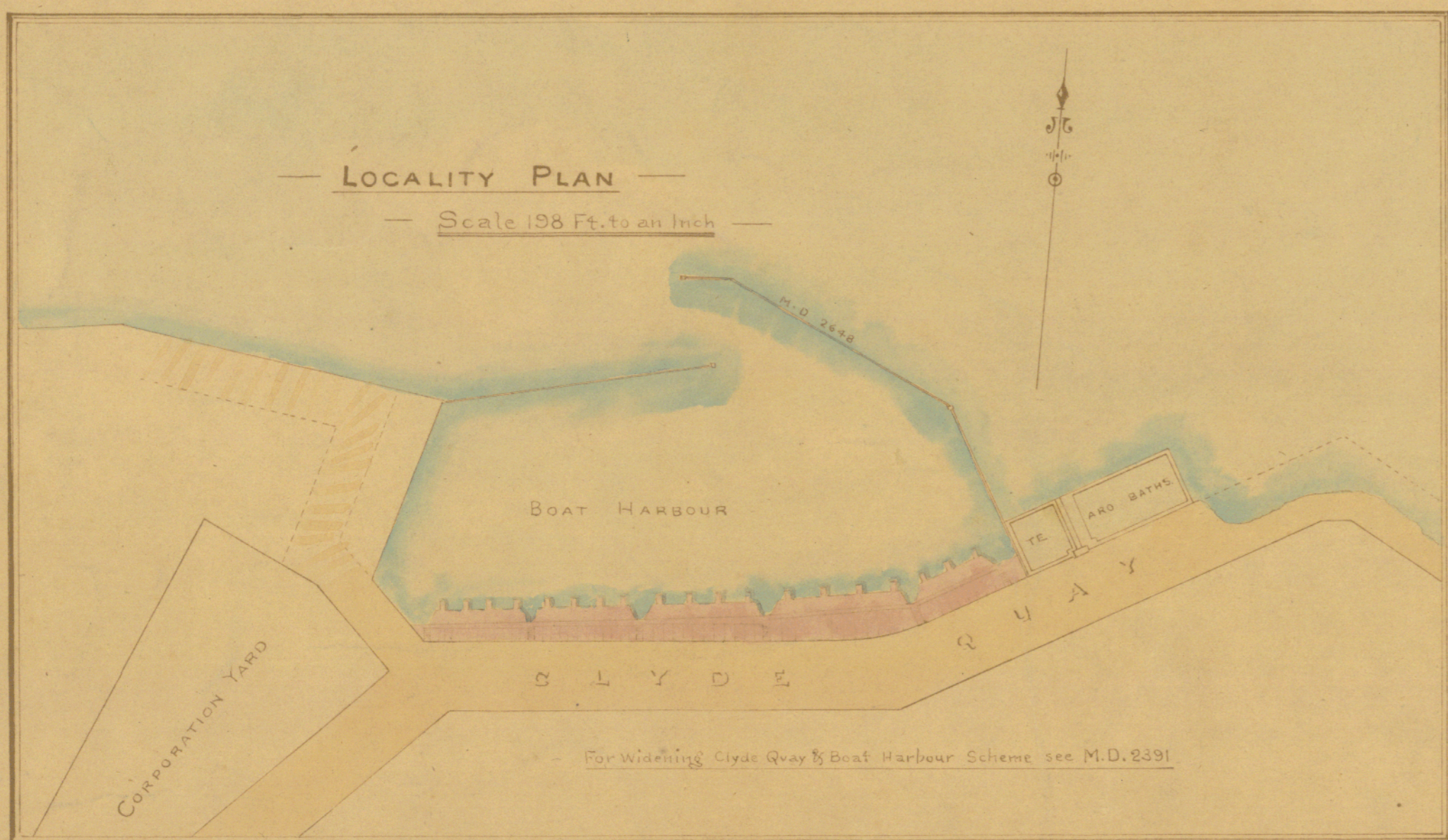
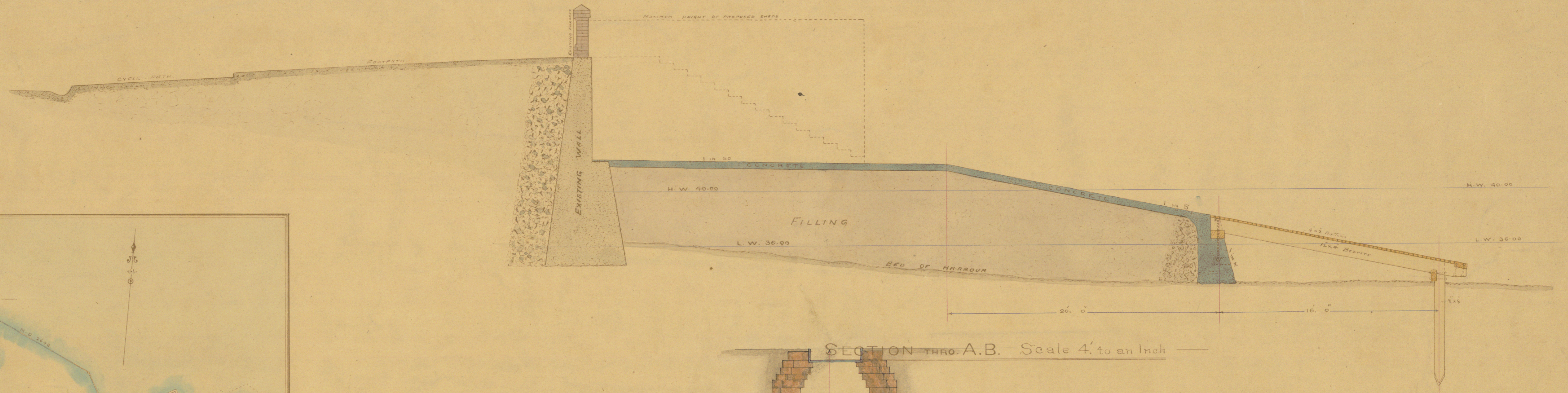
# WELLINGTON HARBOUR BOARD

## PROPOSED FOUNDATION FOR BOAT SHEDS & SKIDS

### BOAT HARBOUR CLYDE QUAY

*William Ferguson  
Engineer to the Board  
4.7.04*

WE  
He  
to 1000.  
Department

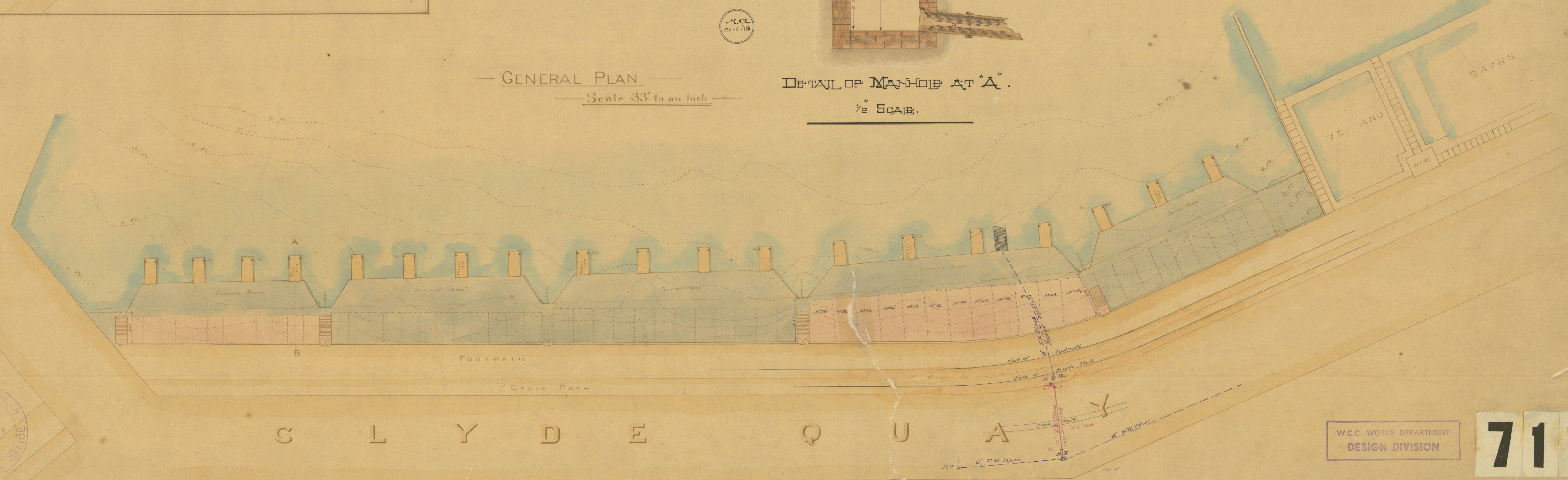


### GENERAL PLAN

Scale 3/32 to an Inch

### DETAIL OF MANHOLE AT 'A'

1/8" SCALE.



W.C.C. WORKS DEPARTMENT  
DESIGN DIVISION

711

WELLINGTON HARBOUR BOARD

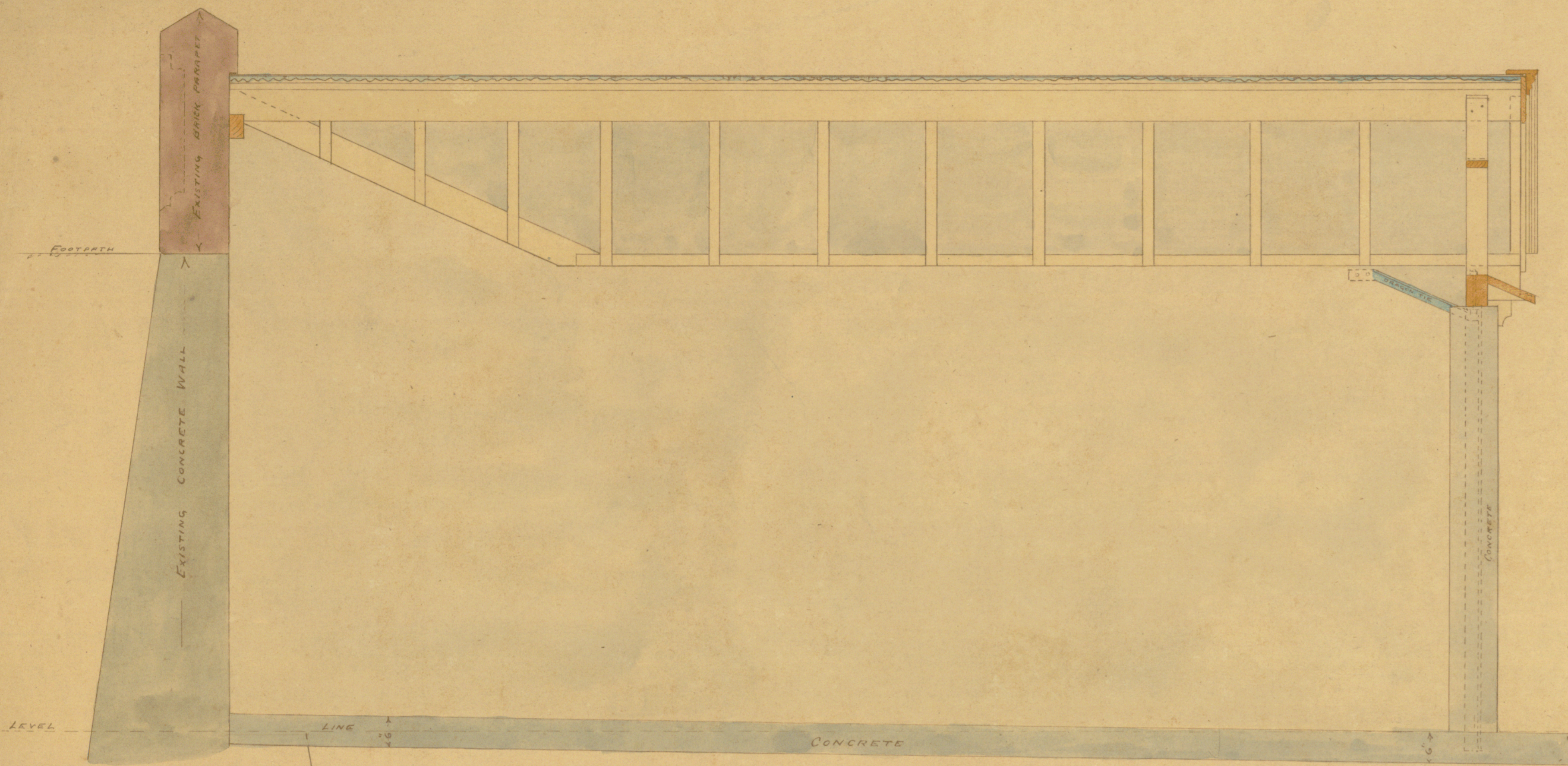
Plan to accompany Application to Marine Department for permission to erect Boat Sheds

BOAT HARBOUR CLYDE QUAY

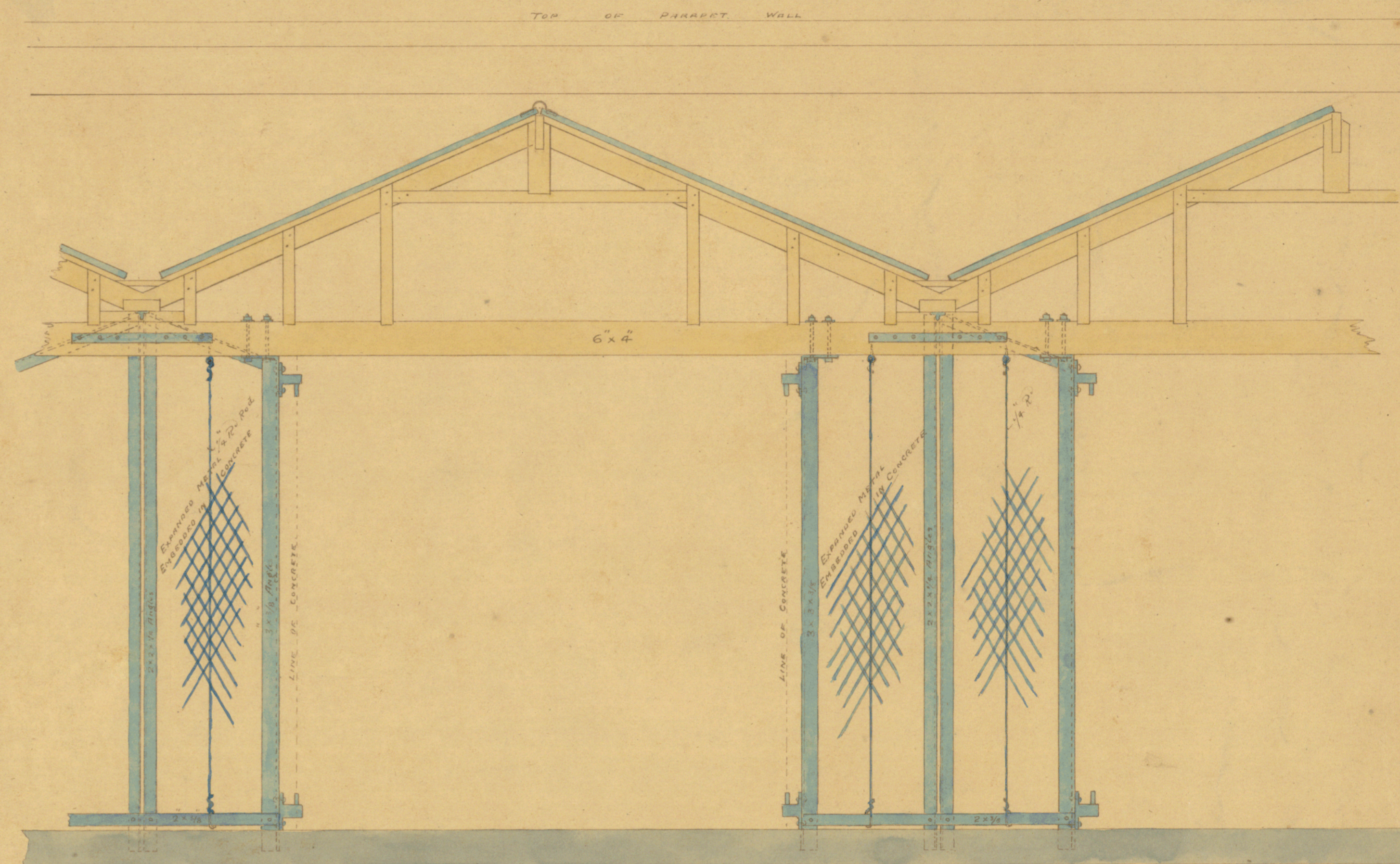
TYPICAL EXAMPLE OF 20' x 14'6" SHED

Scale 3/4" = 1 Foot

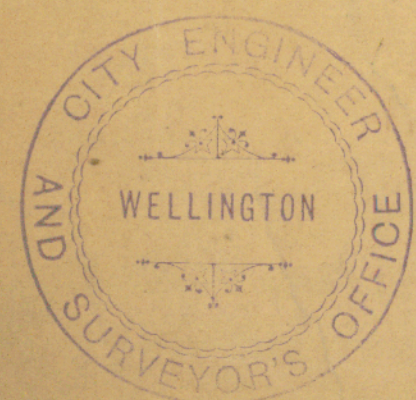
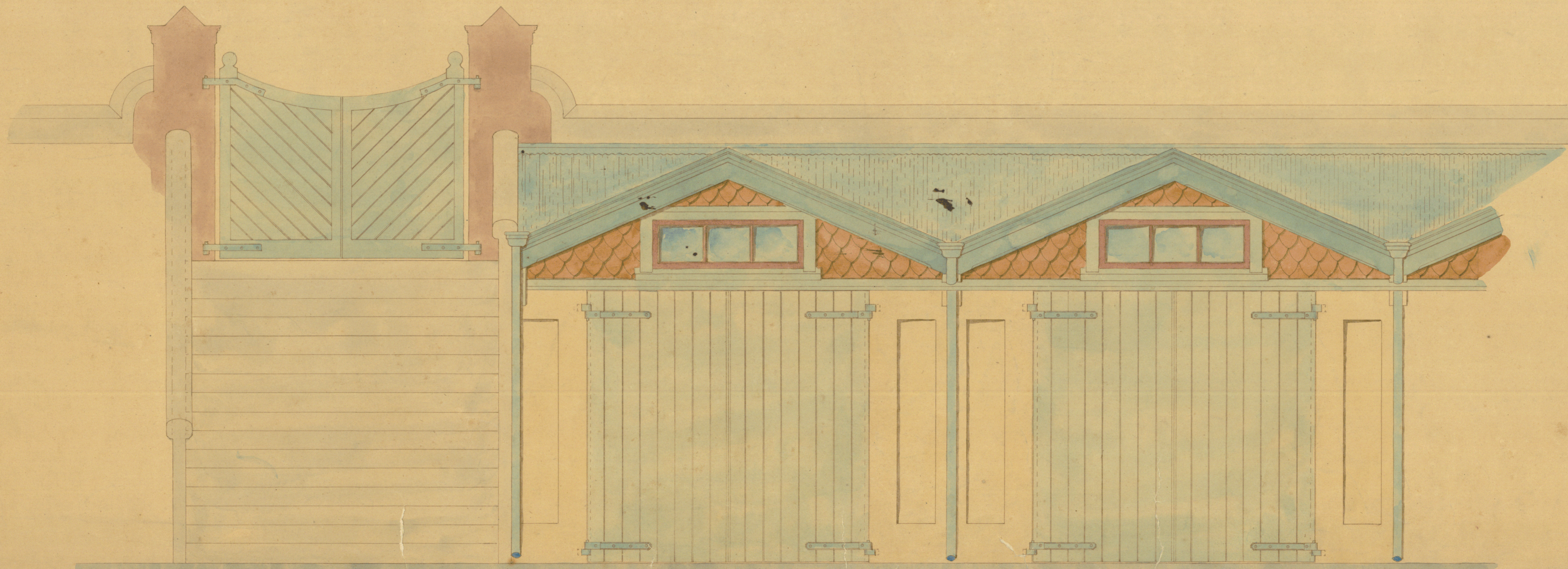
*William Ferguson  
In answer to the Board  
22/7/04*



LONG. SECTION THRU. CENTRE OF SHED



OUTER END OF SHEDS SHEWING FRAMEWORK



W.C.C. WORKS DEPARTMENT  
DESIGN DIVISION

712